



WELCOME TO THE TRANSPORTATION COMMITTEE: REGULAR SESSION

JUNE 19, 2025

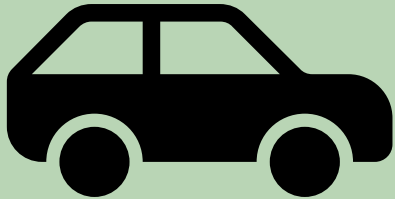


This meeting is held in person at the Florence City Hall with a virtual option
Citizens wishing to express their views may provide verbal or written comments.
For more information, visit the City of Florence website at www.ci.Florence.or.us/bc-tc

AGENDA

Call to Order – roll call

1. Approval of the Agenda
2. Introduction of Transportation Committee
3. Public Comments
4. Update on City Transportation Projects
5. Recap of Previous Year's Transportation Committee Activities
6. Introduction to the Mobility Hub
7. Closing Comments: Next Meeting Date & Future Agenda Topics





INTRODUCTION OF COMMITTEE MEMBERS



PUBLIC COMMENTS

WRITTEN COMMENTS:

EMAIL TO PLANNINGDEPARTMENT@CI.FLORENCE.OR.US

MAIL TO FLORENCE CITY HALL, ATTN: PLANNING COMMISSION, 250 HWY 101, FLORENCE, OR 97439

DROP OFF AT FLORENCE CITY HALL (250 HWY 101) DROP BOX
(TO THE RIGHT OF THE MAIN ENTRANCE)

NOTE: COMMENTS MUST BE RECEIVED AT LEAST 2 HOURS PRIOR TO START OF MEETING.

COMMENTS DISTRIBUTED: TO PLANNING COMMISSION, POSTED TO CITY OF FLORENCE WEBSITE, AND MADE PART OF THE RECORD. (1 HOUR PRIOR TO MEETING)

- **VERBAL COMMENTS:**

- **SPEAKER'S CARD:** COMMENTERS MUST COMPLETE A SPEAKER'S CARD AVAILABLE ONLINE AT [HTTPS://WWW.CI.FLORENCE.OR.US/BC-PC/REQUEST-ADDRESS-PLANNING-COMMISSION-SPEAKERS-CARD](https://www.ci.florence.or.us/bc-pc/request-address-planning-commission-speakers-card)
- **NOTE:** CARDS MUST BE RECEIVED AT LEAST 1 HOUR PRIOR TO MEETING START
- **TIME LIMITS:** GENERAL COMMENTS (NOT A PUBLIC HEARING) ARE LIMITED TO 3 MINUTES PER PERSON, WITH A MAXIMUM OF 15 MINUTES FOR ALL ITEMS.



PUBLIC COMMENTS – 3 MINUTE COUNT DOWN TIMER

2 Minutes Left

1 Minute Left

30 Seconds Left

Time is Complete



CITY OF FLORENCE
PUBLIC WORKS

Transportation Committee Project Updates

Mike Miller
Director of Public Works



Completed Projects



2024 Chip Seal



Rhododendron Drive Realignment
and Improvement Project



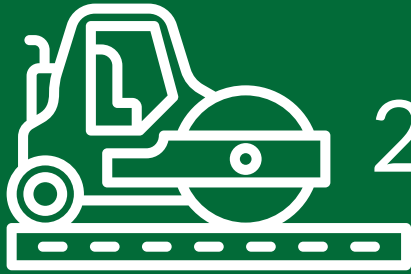
Siuslaw Estuary Trail

Completed Projects



2024 Chip Seal





2024 Chip Seal

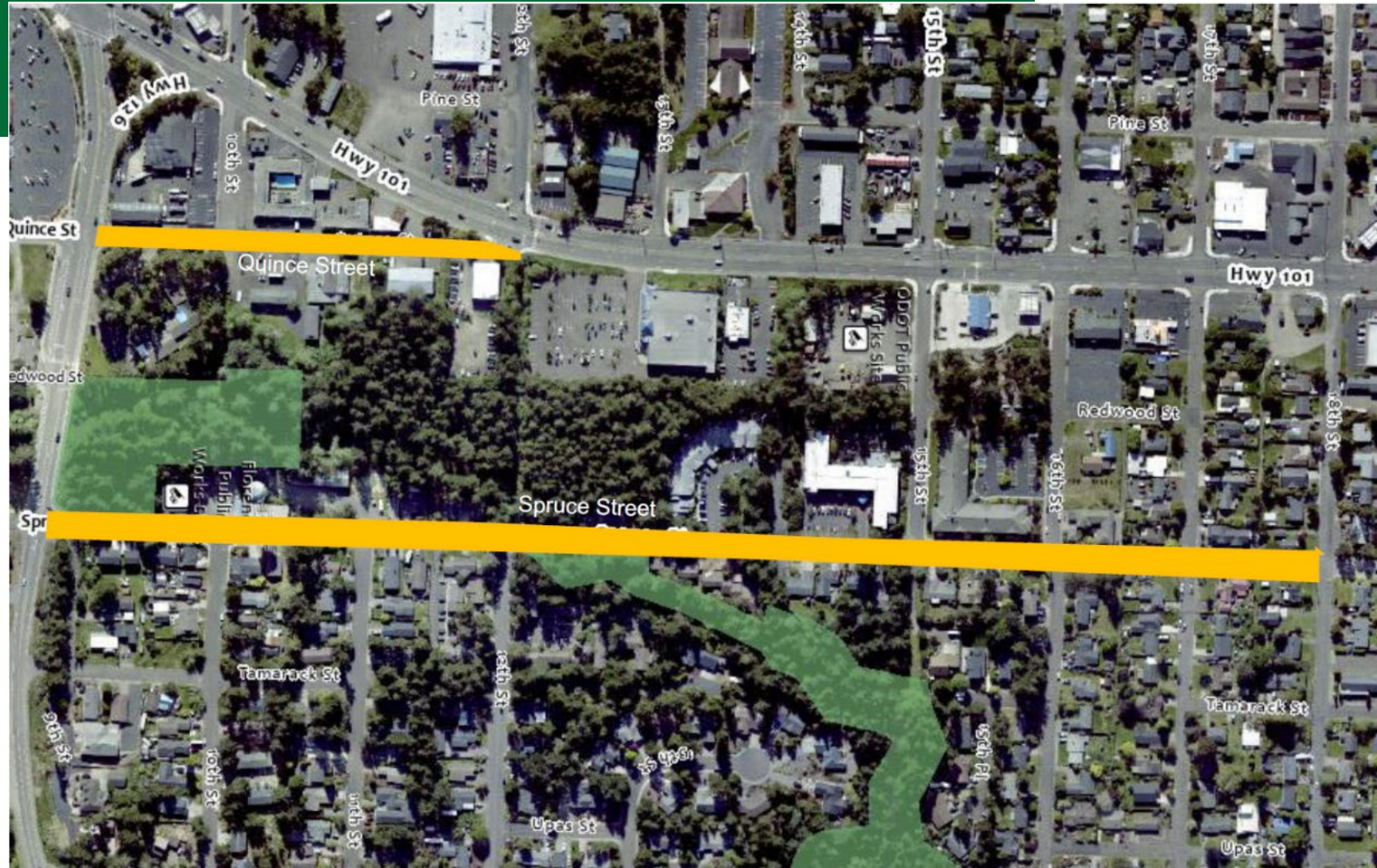
Project in September

Quince St

Hwy 126 - Hwy 101

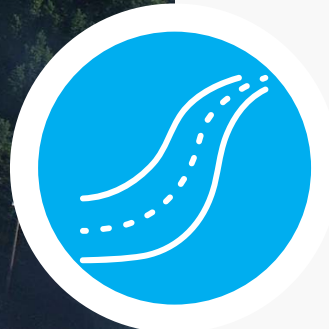
Spruce St

Hwy 126 - 18th St

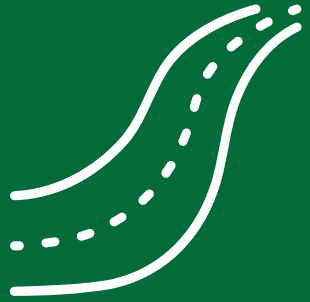




Completed Projects



Rhododendron Drive Realignment
and Improvement Project



Rhododendron Drive Realignment and Improvement Project

Project Cost \$6.94 Million
Plus \$35,000 for Right of Way
& \$25,000 Driveway

Project included \$338,000 for
New Hope Lane – County Reimbursed

Construction began March 2024
Project completion November 2024





Completed Projects



Siuslaw Estuary Trail



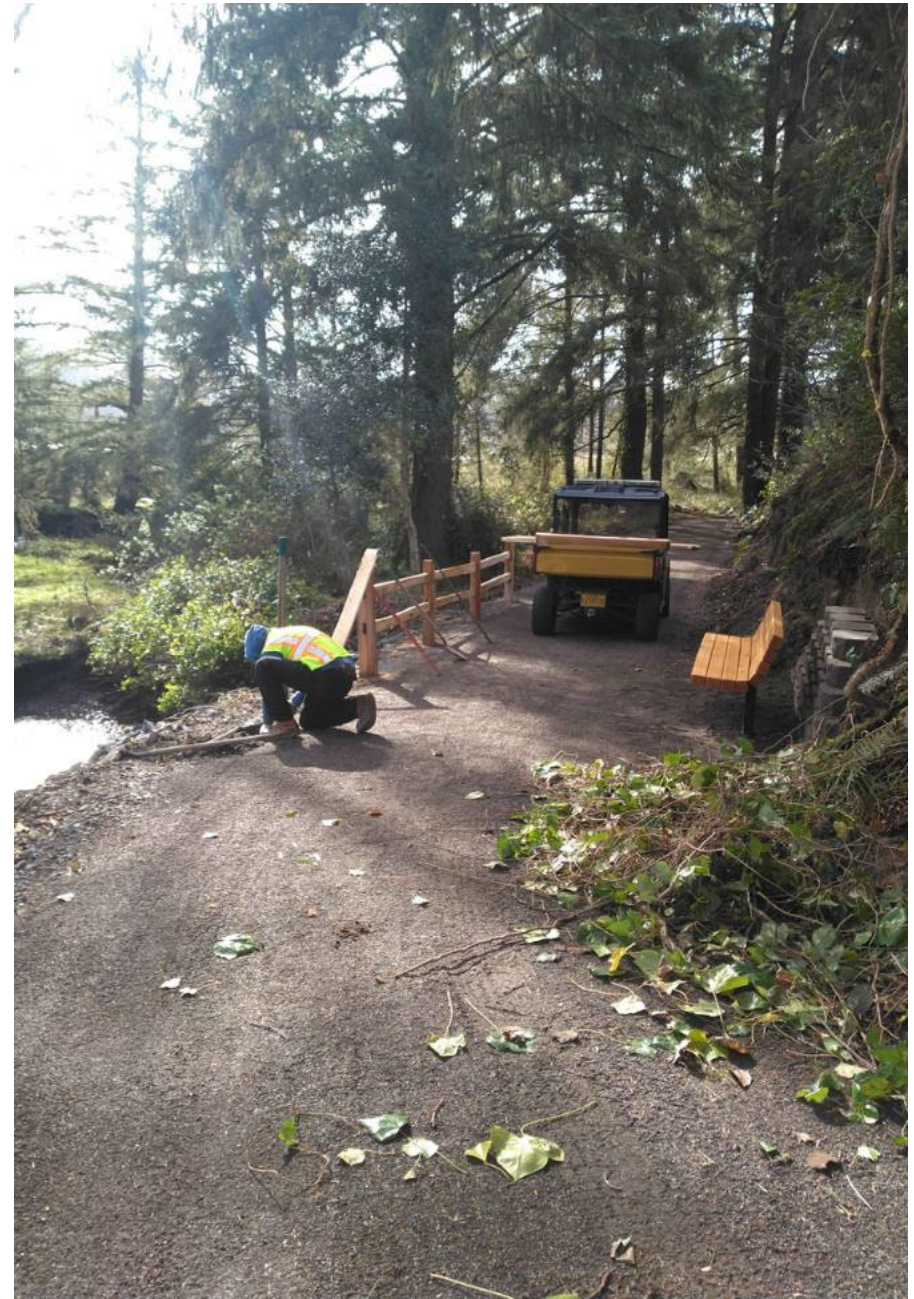
Siuslaw Estuary Trail

Project Cost \$498,371.50

Construction began
August 2024

Project completion in
March 2025





Upcoming Projects



Bus Shelter Replacement



Safe Routes to School



Airport Beacon and Windcone Replacement Project



Northwest 9th St
Neighborhood Infrastructure
Project

Upcoming Projects



Bus Shelter Replacement





Bus Shelter Replacement

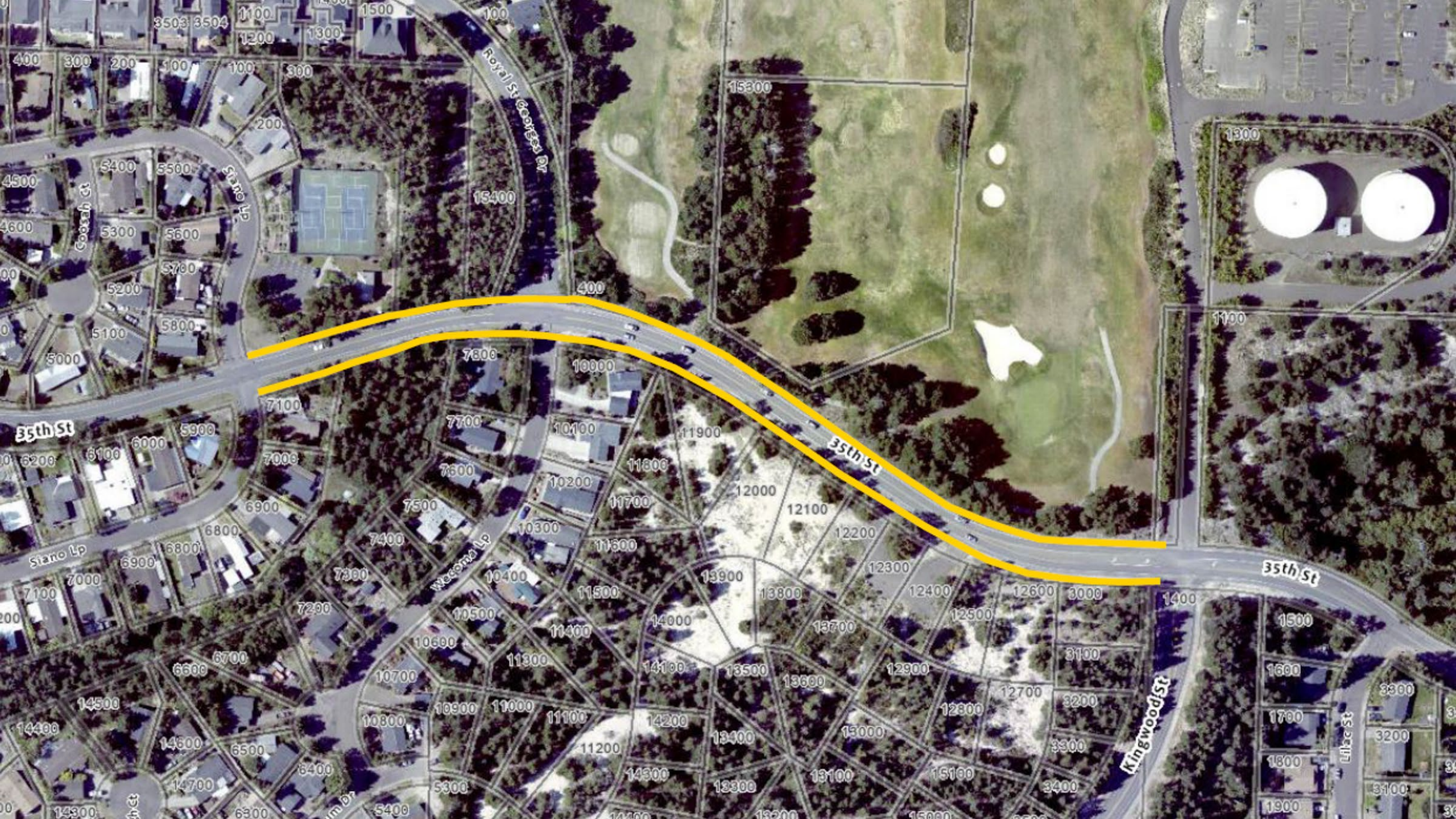
- Spruce Street
 - either near Food Share or at 12th Street
- 8th Street
 - south side of 8th Street near Safeway
- 43rd and Oak Street
 - west side of Oak Street at 43rd
- 21st Street
 - south side of 21st Street at Grocery Outlet
- Peace Harbor Hospital
 - by the 380 building
- Oak Street
 - west side of Oak Street at the Middle School



Upcoming Projects



Safe Routes to School



Upcoming Projects



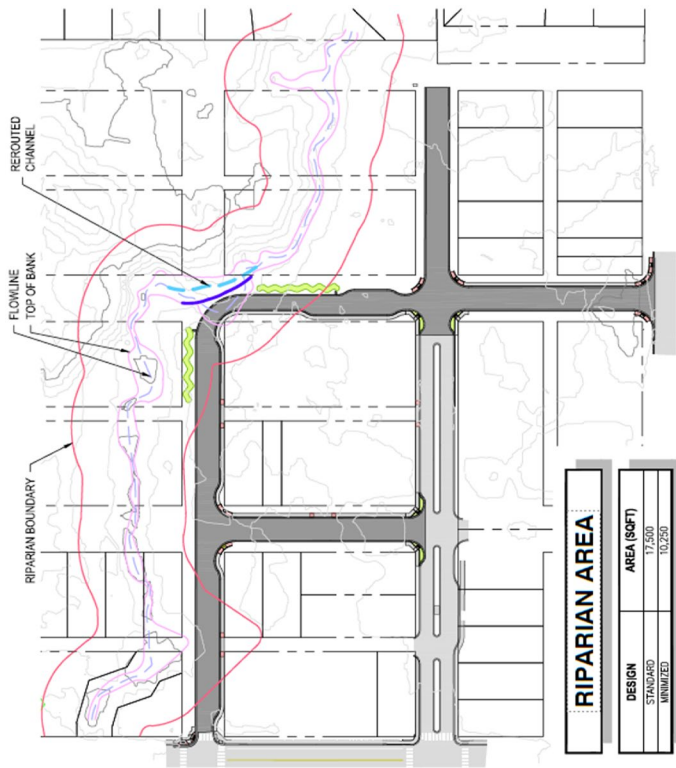
Airport Beacon and Windcone
Replacement Project



Upcoming Projects

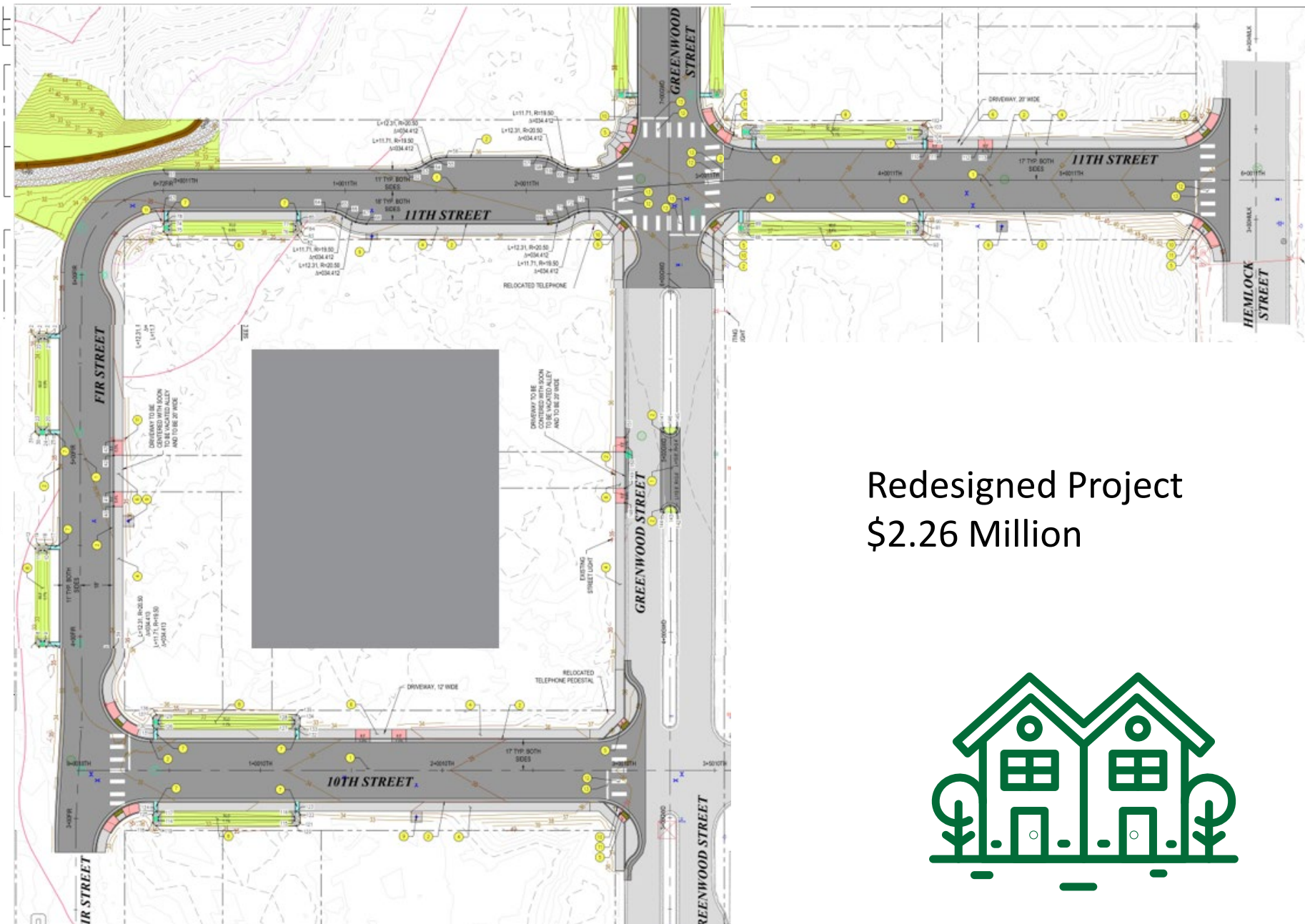


Northwest 9th St
Neighborhood Infrastructure
Project



Original concept included
Extending Fir from 9th to 11th
and Greenwood to 12th

Cost Estimated \$3.4 Million



Redesigned Project
\$2.26 Million





2023 Transportation System Plan

30	Street Projects	\$31,000,000
10	Traffic Safety Projects	\$1,150,000
45	Pedestrian System Improvements	\$35,300,000
12	Ped Crossing Improvements	\$1,950,000
9	Multi-use Path Projects	\$7,895,000
49	Bike System Improvements	\$8,120,000
7	Public Transit Projects	\$1,150,000
1	Parking Projects	\$250,000
	Total	\$87,325,000



High Priority Roadway Projects

Map ID	Location	Description	Priority	Cost (\$1,000)
Roadway Projects				
R1	US 101 (Refinement Plan)	Complete a refinement plan from Munsel Lake Road to the 21 st St to evaluate the potential to reconfigure of the roadway with a 3-lane cross section	High	\$150
R2	Bay Street (Streetscape Plan)	Complete a streetscape design plan from Kingwood Street to Nopal Street to evaluate the potential reconfiguration of the roadway	High	\$50
Intersection Projects				
R17 ¹	US 101/Munsel Lake Road	Reconfigure the intersection/modify the traffic control (e.g., traffic signal, roundabout) when warranted – cost estimate reflects a traffic signal	High	\$1,250
R21 ¹	US 101/OR 126	Restripe the eastbound and southbound approaches to maximize the available storage	High	\$50
R22 ¹	OR 126/Quince Street	Implement turning movement restrictions (right-in/right-out/left-in)	High	\$150
R25	9 th Street/ Kingwood Street	Reconfigure the intersection to all-way stop-control when warranted	High	\$50
R26	35 th Street/ Rhododendron Drive	Reconfigure the intersection to all-way stop-control when warranted	High	\$50
R28	35 th Street/ Kingwood Street	Reconfigure the intersection to all-way stop-control when warranted	High	\$50
R29	35 th Street/Oak Street	Reconfigure the intersection to all-way stop-control when warranted OR install enhanced crossing treatments	High	\$50
Total High Priority Cost				\$1,850



High Priority Traffic Safety Proj

Map ID	Location	Description	Priority	Cost (\$1,000)
S2 ¹	US 101/Munsel Lake Road	Install advance intersection warning signs with flashing beacons and install intersection lighting (Coordinate with Project R17)	High	\$150
S5 ¹	US 101/OR 126	Increase visibility of traffic signal heads (larger bulbs, reflective backplates, etc.) (Coordinate with Project R21)	High	\$50
S6 ¹	US 101/Rhododendron Drive	Increase visibility of traffic signal heads (larger bulbs, reflective backplates, etc.)	High	\$50
S7 ¹	OR 126/Quince Street	Install street lighting and evaluate need for traffic control modification (Coordinate with Project R22 and R23)	High	\$100
S8	Rhododendron Drive/Heceta Beach Road	Install advance intersection warning signs on Heceta Beach Road; trim vegetation in SE and SW corners to increase sight distance; and install intersection lighting	High	\$150
S9	Kingwood Street/15 th Street	Install advance intersection warning signs on Kingwood Street and trim vegetation in SE corner to increase sight distance	High	\$100
S10	Kingwood Street/9 th Street	Install advance intersection warning signs on 9 th Street; install additional intersection lighting; and evaluate need for traffic control modification (Coordinate with Projects R25 and R26)	High	\$100
Total High Priority Cost				\$700



High Priority Pedestrian Projects

Map ID	Location	Description	Priority	Cost (\$1,000)
ODOT Streets				
P1	US 101 37 th St to UGB	Complete sidewalks on both sides of the street	High	\$3,090
P2	OR 126 US 101 to N Fork Road	Construct sidewalks on both sides of the street from Spruce Street to Tamarack Street and a multi-use path on the north side from Tamarack Street to N Fork Road	High	\$1,605
Lane County Streets				
P3	Heceta Beach Rd US 101 to Rhododendron Dr	Construct multi-use path on one side of the street with stormwater facility	High	\$2,750
P4	Munsel Lake Rd US 101 to Spruce St	Construct sidewalks with landscape strips on one side of the street and a multi-use path on the other side of the street	High	\$450
P5	Munsel Lake Rd Spruce St to Ocean Dunes Dr	Construct multi-use path on one side of the street (include landscape strip as feasible)	High	\$2,125
P6	Munsel Lake Rd Ocean Dunes Dr to N Fork Rd	Construct multi-use path on one side of the street (include landscape strip as feasible)	High	\$705
P7	N Fork Rd OR 126 to Munsel Lake Rd	Construct multi-use path on one side of the street (include landscape strip as feasible)	High	\$1,310
City Streets – Arterial				
P11	Rhododendron Dr 9 th St to Wild Winds St	Construct multi-use path on one side of the street (include landscape strip as feasible)	High	\$1,040
P12	Rhododendron Dr Wild Winds St to 35 th St	Construct multi-use path on one side of the street (include landscape strip as feasible)	High	\$1,295
P13	Rhododendron Dr 35 th St to Heceta Beach Rd	Construct multi-use path on one side of the street (include landscape strip as feasible)	High	\$3,730
City Streets – Collector				
P14	2 nd St US 101 to Harbor St	Fill in sidewalk gaps on both sides of the street within Old Town	High	\$530
P18	Rhododendron Dr to Kingwood St	Construct sidewalks on both sides of the street	High	\$1,105
P19	35 th St Kingwood St to Oak St	Fill in sidewalk gaps on both sides of the street	High	\$505
P20	35 th St Oak St to US 101	Fill in sidewalk gaps on both sides of the street	High	\$255
P33	Oak St 27 th St to 35 th St	Construct sidewalk on the east side of the street	High	\$950
City Streets – Other Streets of Significance				
P43	Laurel St-Old Town Wy US 101 to Maple St	Fill in sidewalk gaps on both sides of the street	High	\$405
Total High Priority Cost				\$21,850



Priority Crossings & Multi-use

Map ID	Location	Description	Priority	Cost (\$1,000)
ODOT Streets				
C11	US 101	Install enhanced crossing treatments on US 101 at 46 th St (Coordinate with Project R5) and 42 nd /43 rd St	High	\$250
Lane County Streets				
C5	Munsel Lake Rd	Install enhanced crossing treatments on Munsel Lake Rd at Munsel Landing County Park and at Ocean Dunes Dr	High	\$50
City Streets				
C9	Oak St	Install enhanced crossing treatments at 35 th St, 27 th St, and 21 st St; install second crosswalk and school crosswalk signs at 30 th St	High	\$200
C12	Old Town	Install marked crosswalks with curb extensions on 2 nd St at Nopal St, Oak St, and Harbor St; install midblock crossings at Bay St and the boardwalk	High	\$250
Total High Priority Cost				\$750

Map ID	Location	Description	Priority	Cost (\$1,000)
MU1	Munsel Creek Multi-use Path	Install and/or improve the segments of the Munsel Creek Trail between Quince Street and 16 th Street and between 25 th Street and 29 th Street. Between 16 th St and 25 th St, the path uses the existing West Park Drive, 18 th St, Willow Loop, 23 rd St, and Willow St roadway alignments (MU1-A). Extend the path from the Munsel Lake Greenway to Munsel Lake Road (MU1-B)	High	\$3,180
MU2	Estuary Trail	Install a multi-use path from the Boardwalk in Old Town to south end of Munsel Creek Trail	High	\$1,375
Total High Priority Cost				\$4,555



High Priority Bicycle Projects

Map ID	Location	Description	Priority	Cost (\$1,000)
ODOT Streets				
B1	US 101 37 th St to UGB	Construct buffered bike lanes on both sides of the street (requires narrowing travel lanes) OR construct bike facilities consistent with US 101 Refinement Plan	High	\$360
B6	OR 126 US 101 to Tamarack St	Construct buffered bike lanes on both sides of the street (requires narrowing travel lanes)	High	\$65
Lane County Streets				
B8	Heceta Beach Rd US 101 to Rhododendron Dr	Construct shoulder bikeways on both sides of the street (coordinate with Project P3)	High	\$915
B9	Munsel Lake Rd US 101 to Spruce St	Construct bike lanes on both sides of the street (coordinate with Project P4)	High	\$65
B10	Munsel Lake Rd Spruce St to Ocean Dunes Dr	Construct shoulder bikeways on both sides of the street (coordinate with Project P5)	High	\$710
B11	Munsel Lake Rd Ocean Dunes Dr to N Fork Rd	Construct shoulder bikeways on both sides of the street (coordinate with Project P6)	High	\$235
B12	N Fork Rd OR 126 to Munsel Lake Rd	Construct shoulder bikeways on both sides of the street (coordinate with Project P7)	High	\$435
City Streets – Arterials				
B16	Rhododendron Dr 9 th St to Wild Winds St	Construct shoulder bikeways on both sides of the street (coordinate with Project P11)	High	\$345
B17	Rhododendron Dr Wild Winds St to 35 th St	Construct shoulder bikeways on both sides of the street (coordinate with Project P12)	High	\$430
B18	Rhododendron Dr 35 th St to Heceta Beach Rd	Construct shoulder bikeways on both sides of the street (coordinate with Project P13)	High	\$1,245



Priority Bicycle & Transit Projects

City Streets – Collectors				
B19	2 nd St US 101 to Harbor St	Extend shared lane pavement markings from Maple St to US 101	High	\$5
B35	Maple St US 101 to Bay St	Add shared lane pavement markings	High	\$5
B36	Oak St 20 th St to 27 th St	Construct bike lanes from 20 th St to Siuslaw Middle School Dwy (requires removing on-street parking)	High	\$200
B39	Quince St 2 nd St to OR 126	Construct bike lanes on both sides of the street (requires removing on-street parking)	High	\$180
B41	Spruce St 42 nd St to 35 th St	Construct bike lanes on both sides of the street from 42 nd St to 37 th St (requires removing on-street parking)	High	\$210
B42	Spruce St 32 nd St to 17 th St	Construct bike lanes on both sides of the street from 25 th St to 17 th Street (requires removing on-street parking)	High	\$430
B43	Spruce St 17 th St to OR 126	Construct bike lanes on both sides of the street (requires removing on-street parking)	High	\$245
City Streets – Other Roads of Interest				
B46	Laurel St-Old Town Wy US 101 to Laurel St	Add shared lane pavement markings	High	\$5
B49	West Park Dr/18 th St/Willow Lp/Willow St	Add shared lane pavement marking (coordinate with Project MU1)	High	\$15
Total High Priority Cost				\$6,100

Map ID	Location	Description	Priority	Cost (\$1,000)
T1	Local Service	Add service to Rhododendron Dr and Heceta Beach neighborhood	High	0 ¹
T3	Marketing	Improve marketing for intercity service, specifically for Link Lane service to Eugene and to Yachats	High	\$50
T5	Bus Stops	Add shelters and/or benches to existing bus stops and build bus stops that are accessible	High	\$250
Total High Priority Cost				\$300

1. Project will be funded by others or in conjunction with others.



Questions & Comments

Mike Miller

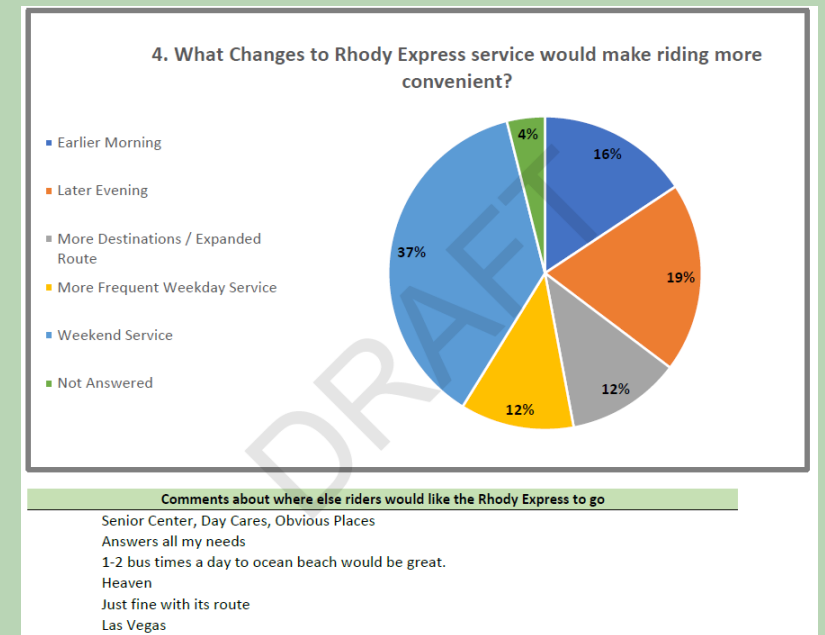
Director of Public Works

2024 TRANSPORTATION COMMITTEE ACTIVITIES

- BIKE MONTH (MAY)
- COMMUNITY BLOCK PARTY
- POWER OF FLORENCE



OREGON FRIENDLY DRIVER TRAINING COURSE



2024 RIDER SURVEY





LTD | Rhody Express

OUTLINE

City of Florence Mobility Hub Project





MOBILITY HUB NEEDS

- Enhanced coordination of transfer schedules between bus lines
- Improved passenger transfer and waiting area
- Operator layover facilities



MOBILITY HUB STUDY KEY ELEMENTS

- Public Engagement
- Site Selection Criteria & Decision-Making Process
- Mobility Hub Concept Design
- Mobility Hub Operations and Maintenance Requirements
- Implementation Strategy



POTENTIAL MOBILITY HUB AMENITIES



- Electric Vehicle Charging
- Park & Ride
- Bicycle Share
- Secure Bicycle Parking



QUESTIONS?



CLOSING COMMENTS, NEXT MEETING, & FUTURE TOPICS

Transportation Committee Calendar		
Date	Time	Description
July 17, 2025	5:00 pm	Transportation Committee Meeting
July 18, 2025	5:00 pm	City of Florence Community Block Party
August 21, 2025	5:00 pm	Transportation Committee Meeting

ADJOURN



THANK YOU!

TRANSPORTATION
COMMITTEE