

An aerial photograph showing a coastal town with houses, streets, and a water tower. A river winds through a grassy field in the foreground. The image is partially covered by a dark blue background with light blue wavy patterns on the left and bottom.

SIUSLAW ESTUARY TRAIL

A photograph of a paved trail winding through a forest of tall evergreen trees. The trail is on a hillside, and the background is partially covered by a dark blue background with light blue wavy patterns.

SIUSLAW ESTUARY TRAIL



The Siuslaw Estuary Trail is a new multi-use path opening in the City of Florence this winter! This project was designed to enhance recreational opportunities along the Siuslaw River, promote environmental stewardship, and connect the community. Spanning over a decade of planning, funding, and construction, the trail embodies collaborative efforts between governmental agencies, local organizations, and the community.

Florence Public Works and contractor Laskey-Clifton Corporation plan to complete this phase of the trail in February 2025, weather dependent.

www.ci.florence.or.us/publicworks/siuslaw-estuary-trail

SIUSLAW ESTUARY TRAIL



This long-awaited project will link Highway 126 at Spruce Street and follow along Munsel Creek and the Siuslaw River to end at Quince Street. It consists of the estuary trail and parking lot, along with curbs, pedestrian ramps, sidewalks along Redwood Street (from Highway 126 to the south end of Redwood), catch basins, and more.

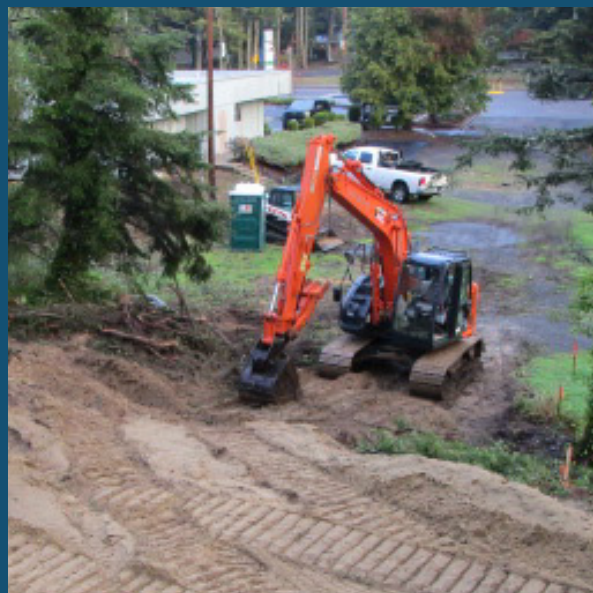
The City worked with Civil West Engineering Services, Inc., to plan the project scope. Then, Florence City Council voted to approve the bid from Laskey-Clifton Corporation, based out of Reedsport, as the contractors for the project.

www.ci.florence.or.us/publicworks/siuslaw-estuary-trail

SIUSLAW ESTUARY TRAIL



The City of Florence broke ground in August as Laskey-Clifton Corporation began mobilizing equipment onto the property. The first steps were vegetation removal and excavation of the trail.



SIUSLAW ESTUARY TRAIL



Laskey-Clifton has continued to work on the trailhead on Redwood Street and established the path along the estuary. This includes slope stabilization, stormwater lines, geothermal fabric, mulched material, crushed rock, and more.



www.ci.florence.or.us/publicworks/siuslaw-estuary-trail

SIUSLAW ESTUARY TRAIL



The Siuslaw Estuary Trail will also provide a trailhead and parking lot on the south side of Highway 126 at Spruce Street. Starting in late December, crews installed the standard curbs for the parking lot as well as the radius from Spruce Street into the parking lot, along with ADA-accessible ramps.



SIUSLAW ESTUARY TRAIL

The Siuslaw Estuary Trail will offer outdoor enthusiasts a safe and enjoyable space for walking, biking, and experiencing the area's natural beauty. Designed to withstand the impacts of nearby waterways, the trail ensures long-lasting use for future visitors.



Community members can soon take pride in this significant addition to Florence, fostering a greater connection to the environment and providing a recreational outlet that enhances the quality of life in the area. The Siuslaw Estuary Trail is more than just a pathway; it is a symbol of cooperation, conservation, and community spirit.

SIUSLAW ESTUARY TRAIL

Thank you!

The Siuslaw Estuary Trail was developed collaboratively with input from community members and the Siuslaw Estuary Partnership, a multi-year US Environmental Protection Agency grant-funded project. From November 2010 through January 2013, the “Siuslaw Estuary Trail Vision: Preferred Location and Design” report was prepared by project staff, with input and guidance from the Siuslaw Estuary Trail Technical Team and the Siuslaw Estuary Partnership Interdisciplinary Team.

Participants of the technical team included the City of Florence; Port of Siuslaw; Confederated Tribes of Coos, Lower Umpqua, and Siuslaw Indians; Oregon Department of Fish and Wildlife; Oregon Department of Land Conservation and Development; Oregon Department of State Lands; Oregon Department of Transportation; Siuslaw Watershed Council; US Army Corps of Engineers; and US Bureau of Land Management. We thank everyone for their work, as well as the many community stakeholders.

Learn more about the Siuslaw Estuary Trail at
www.ci.florence.or.us/publicworks/siuslaw-estuary-trail