

City of Florence

Lane County, Oregon

VOLUME 3 - Project Drawings

FOR THE CONSTRUCTION OF

Siuslaw Estuary Trail

March 2023
Project No. 1503-022



Prepared By:

Civil West Engineering Services, Inc.

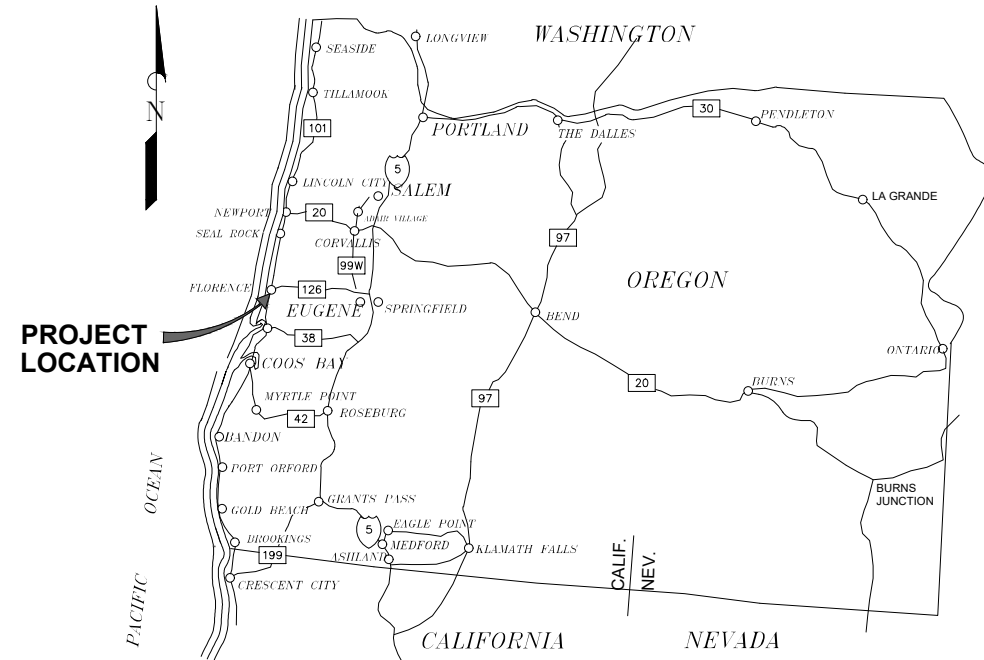
486 E Street • Coos Bay, Oregon 97420 • Ph. 541.266.8601, Fax 541.266.8681 • www.civilwest.com
609 SW Hurbert Street • Newport, OR 97366 • Ph. 541.264.7040, Fax 541.264.7041
830 O-Hare Parkway, Ste. 102 • Medford, OR 97504 • Ph. 541-326-4828
200 Ferry Street SW, Suite 100 • Albany, OR 97321 • Ph. 541-223-5130

CITY OF FLORENCE

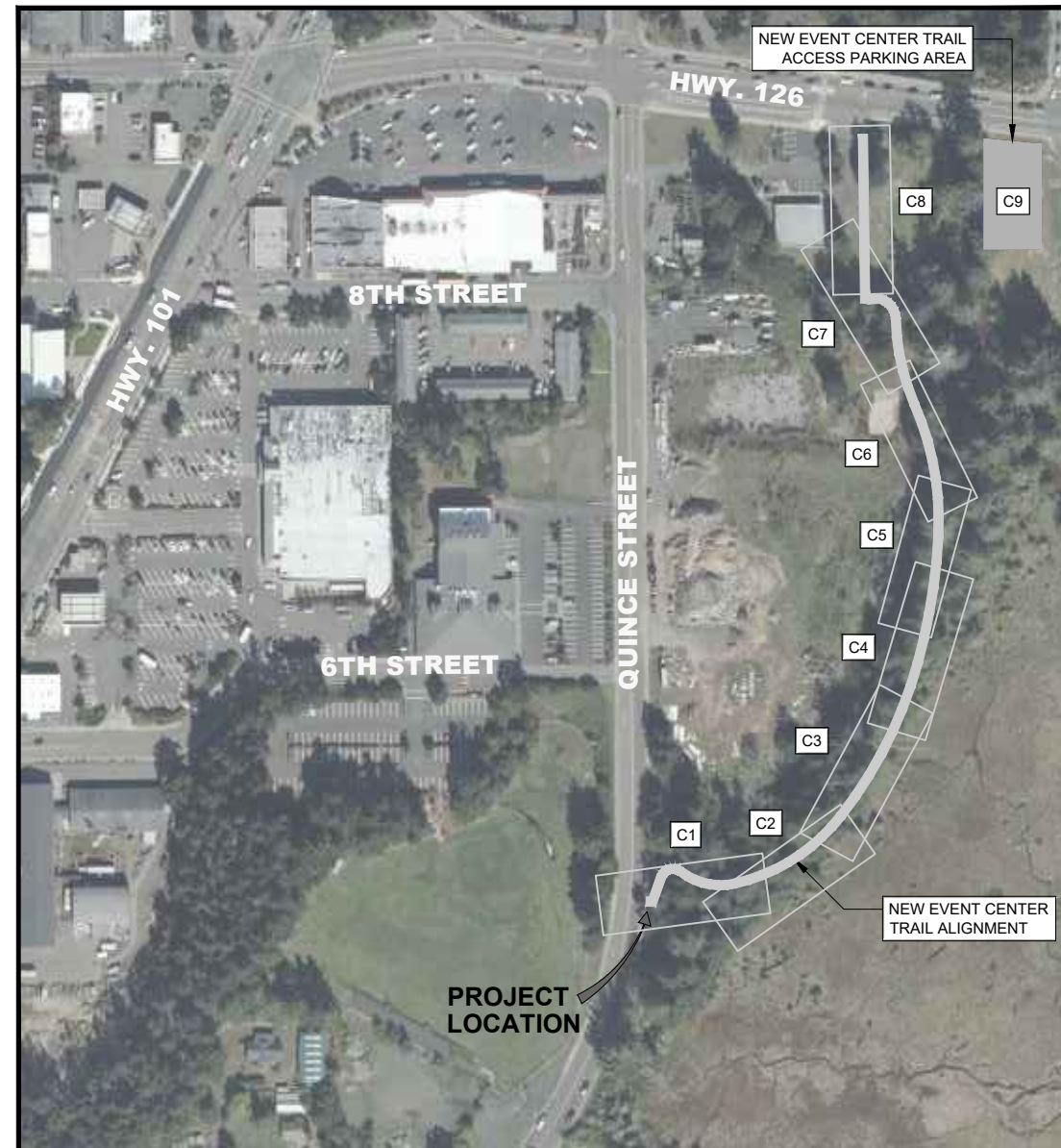
LANE COUNTY

SIUSLAW ESTUARY TRAIL

PROJECT NO. 1503-022
MARCH, 2023



LOCATION MAP



VICINITY MAP
NOT TO SCALE

SHEET INDEX

SHEET #	SHEET NAME
GENERAL	
C0	COVER & SHEET INDEX
G1	GENERAL NOTES, ABBREVIATIONS, AND LEGEND
SIUSLAW ESTUARY TRAIL, PHASE 1 PLAN AND PROFILE	
C1	STA 0+00 TO 2+00
C2	STA 2+00 TO 4+00
C3	STA 4+00 TO 6+00
C4	STA 6+00 TO 8+00
C5	STA 8+00 TO 10+00
C6	STA 10+00 TO 12+00
C7	STA 12+00 TO 14+00
C8	STA 14+00 TO 15+25
NEW PARKING AREA CIVIL PLAN	
C9	PARKING LOT IMPROVEMENT AND DEMOLITION PLAN
C10	EROSION CONTROL PLAN
C11	TREE REMOVAL PLAN
FUTURE FOOT BRIDGE LOCATION MAP	
C12	FUTURE FOOT BRIDGE LOCATION
DETAIL	
D1	TRAIL CROSS SECTION AND DRIVEWAY DETAIL
D2	CATCH BASIN AND CURB DETAILS
D3	SIDEWALK DETAILS
D4	VALLEY GUTTER DETAILS

Civil West
Engineering Services, Inc.

486 E. ST.
COOS BAY, OR 97420

541-266-8601
www.civilwest.com

REV.	DATE	DESCRIPTION	BY

DESIGNED BY: JRP	DRAWN BY: JRP	CHECKED BY: SDL
PROJECT NO: 1503-022		

CITY OF FLORENCE LANE COUNTY	SIUSLAW ESTUARY TRAIL	COVER
---------------------------------	-----------------------	-------

Date	Sheet No.
MARCH, 2023	CO

DATE: 3/13/23 FILE: C:\CW_Projects\1503-Florence\1503-022-Florence - Event Center Trail Improvements\04-Final Design\Drawings\DWG\Design-Workings-Spruce Street.Modify.dwg

GENERAL NOTES

- ATTENTION: OREGON LAW REQUIRES YOU TO FOLLOW RULES ADOPTED BY THE OREGON UTILITY NOTIFICATION CENTER. THOSE RULES ARE SET FORTH IN OAR 952-001-0010 THROUGH 952-001-0090. YOU MAY OBTAIN A COPY OF THE RULES BY CALLING THE CENTER.

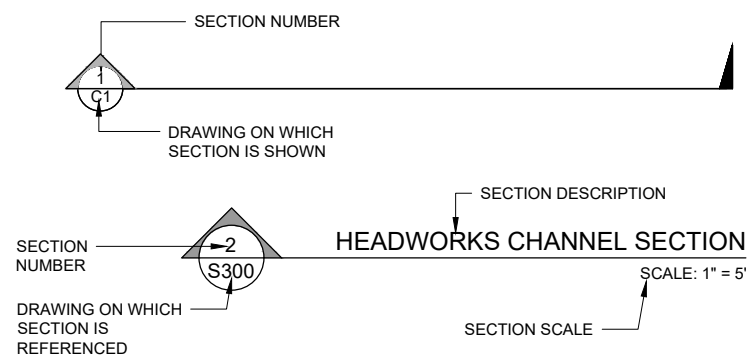
NOTE: THE TELEPHONE NUMBER FOR THE OREGON UTILITY NOTIFICATION CENTER IS (503) 232-1987. STAT. AUTH.: ORS 757.542 THROUGH ORS 757.562 AND ORS 757.993.
- THE CONTRACTOR SHALL CONTACT 'ONE CALL' FOR UTILITY LOCATES PRIOR TO EXCAVATION. (1-800-332-2344)

ALL MATERIALS AND WORKMANSHIP SHALL CONFORM TO THE PROJECT DESIGN SPECIFICATIONS AND DRAWINGS. THESE DRAWINGS SHALL BE COORDINATED AND USED IN CONJUNCTION WITH THE TECHNICAL SPECIFICATIONS AND APPROVED SUBMITTALS. CONSTRUCTION PERMITS ARE REQUIRED FROM DOUGLAS COUNTY TO ERECT THE AWNING AS PART OF THE ALT BID.
- PROPERTY AND RIGHT OF WAY LINES SHOWN IN THIS PLAN SET ARE APPROXIMATE AND BASED ON BEST AVAILABLE INFORMATION. CONTRACTOR SHALL OBTAIN TEMPORARY CONSTRUCTION ACCESS OR PERMISSION FROM PRIVATE LAND OWNERS PRIOR TO ENTERING PRIVATE PROPERTY.
- CLEAN ALL DRAINAGE FACILITIES SUCH AS INLETS, CATCH BASINS, AND OPEN DITCHES AS WELL AS ALL PAVEMENT SURFACES OF ALL EXCESS MATERIAL OR DEBRIS RESULTING FROM THE WORK, WHETHER NEW OR EXISTING, WITHIN THE LIMITS OF THE PROJECT TO THE SATISFACTION OF THE OWNER.
- CONTRACTOR SHALL PROVIDE PROPER EROSION CONTROL AND RUNOFF PROTECTION. ADHERE TO OREGON DEPARTMENT OF ENVIRONMENTAL QUALITY RULES AND BEST MANAGEMENT PRACTICES (BMPs) REGARDING EROSION CONTROL. SUBMIT PLANNED EROSION CONTROL PROCEDURES FOR APPROVAL. CONTRACTOR IS RESPONSIBLE TO PROPERLY PROTECT SITE AND ADJACENT SITES FROM EROSION AND RUNOFF AND TO COMPLY WITH ALL APPLICABLE RULES AND REGULATIONS.
- MHHW ELEVATION IS EQUAL TO NAVD88 7.21 FT. FINISHED ELEVATIONS OF EVENT CENTER TRAIL SHALL BE ELEVATED ABOVE MHHW.
- ALL CONSTRUCTION ACTIVITIES SHALL BE REMOVED FROM WETLAND AREAS.
- FIELD ADJUSTMENTS TO ALIGNMENT AND PROFILE OF PATH WILL BE REQUIRED AND MUST BE COORDINATED WITH THE CITY OR THEIR REPRESENTATIVE(S). NO SEPARATE PAYMENT SHALL BE MADE.

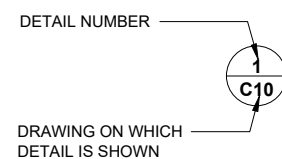
GENERAL ABBREVIATIONS

AC	PAVEMENT	OF	OVERFLOW
BC	BEGIN CURVE	PED	PEDESTAL
BM	BENCH MARK	PVC	POLY VINYL CHLORIDE PIPE
BOW	BACK OF WALK	PVI	POINT OF VERTICAL INTERSECTION
CB	CATCH BASIN	ROW	RIGHT OF WAY
CTR	CENTER	SD	STORM DRAIN
D	DRAIN	SE	SPOT ELEVATION
DI	DUCTILE IRON	SPW	SPILLWAY
EL	ELEVATION	STA	STATION
EOG	EDGE OF GRAVEL	SW	SIDEWALK
EXTG	EXISTING	TBC	TOP BACK OF CURB
FH	FIRE HYDRANT	TG	TOP OF GRATE
FL	FLOWLINE	TOE	TOP OF SLOPE
IE	INVERT ELEVATION	TOP	TOP OF BANK
LIP	LIP OF GUTTER	TOC	TOP OF CURB
MH	MANHOLE	TYP	TYPICAL
MHHW	MEAN HIGHER HIGH WATER	TW	TOP OF WALL
		WM	WATER METER
		WV	WATER VALVE

SECTION REFERENCING



DETAIL REFERENCING



EXISTING FEATURE LEGEND

SYMBOL LEGEND

SANITARY SEWER MANHOLE		MAIL BOX	
STORM DRAIN MANHOLE		TREE/SHRUB	
CATCH BASIN		STREET SIGN	
WATER VALVE			
WATER METER			
FIRE HYDRANT			
CLEANOUT			
POWER POLE			
GUY ANCHOR			
POWER PEDESTAL			
TELEPHONE PEDESTAL			
SURVEY MARKER			

LINETYPE LEGEND

WATER LINE	
STORM DRAIN	
SANITARY SEWER	
ELECTRICAL	
OVER HEAD LINE	
TELEPHONE LINE	
GAS LINE	
TREELINE	
EDGE OF PAVEMENT	
RIGHT OF WAY	
CONTOURS	

HATCH LEGEND

CONCRETE	
PAVEMENT	
GRANULAR MATERIALS SUCH AS CRUSHED ROCK OR GRAVEL	
BUILDING	

NEW FEATURE LEGEND

SYMBOL LEGEND

CATCH BASIN	
-------------	--

LINETYPE LEGEND

STORM DRAIN	
-------------	--

HATCH LEGEND - NEW

CONCRETE	
PAVEMENT	
GRAVEL	
SOIL CUT	
SOIL FILL	

GRADING LEGEND

EXISTING GRADE SPOT ELEVATION	
FINISH GRADE SPOT ELEVATION	



RENEWS: 12/31/24



541-266-8601
www.civilwest.com

486 E. ST.
COOS BAY, OR 97420

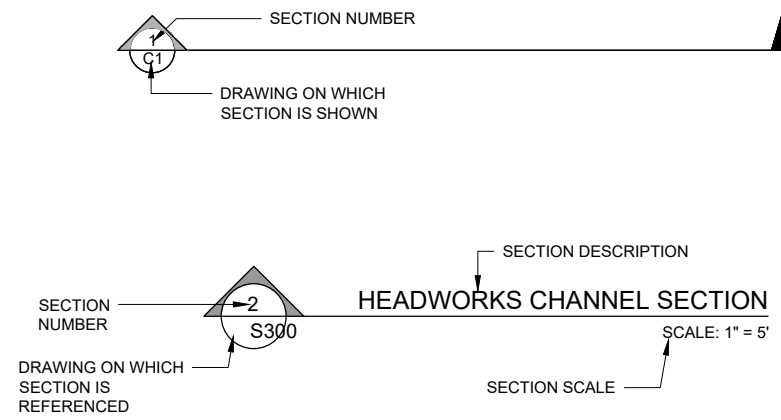
REV.	DATE	DESCRIPTION	BY

DESIGNED BY: JRP	DRAWN BY: JRP	CHECKED BY: SDL
PROJECT NO: 1503-022		

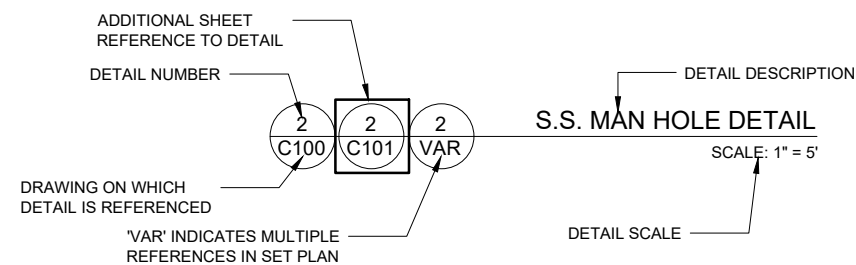
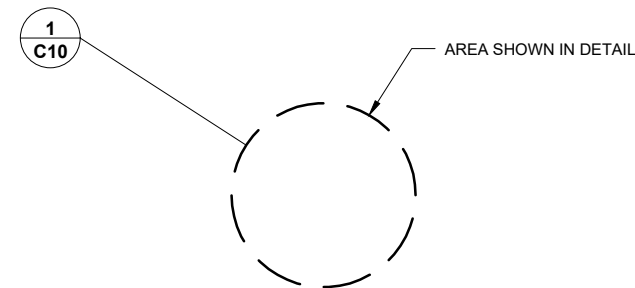
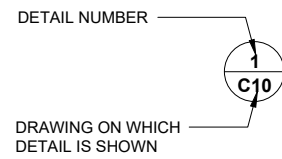
CITY OF FLORENCE LANE COUNTY	SIUSLAW ESTUARY TRAIL	GENERAL NOTES, ABBREVIATIONS, AND LEGEND
---------------------------------	-----------------------	---

Sheet No. G1
Date MARCH, 2023

SECTION REFERENCING



DETAIL REFERENCING



EXISTING FEATURE LEGEND

SYMBOL LEGEND

SANITARY SEWER MANHOLE		MAIL BOX	
STORM DRAIN MANHOLE		AIR RELEASE VALVE	
CATCH BASIN		BLOW OFF VALVE	
WATER VALVE		PROFILE SERVICE LATERAL CROSSING	
WATER METER		PROFILE TELEPHONE LINE CROSSING	
FIRE HYDRANT		PROFILE ELECTRICAL LINE CROSSING	
CLEANOUT		PROFILE WATERLINE CROSSING	
POWER POLE		PROFILE SANITARY SEWER CROSSING	
GUY ANCHOR		PROFILE STORM DRAIN CROSSING	
POWER PEDESTAL		TREE/SHRUB	
TELEPHONE PEDESTAL		STREET SIGN	
SURVEY MARKER			

LINETYPE LEGEND

WATER LINE	
STORM DRAIN	
SANITARY SEWER	
ELECTRICAL	
OVER HEAD LINE	
TELEPHONE LINE	
GAS LINE	
TREELINE	
EDGE OF PAVEMENT	
RIGHT OF WAY	
CONTOURS	

HATCH LEGEND

CONCRETE	
PAVEMENT	
GRANULAR MATERIALS SUCH AS CRUSHED ROCK OR GRAVEL	
NATURAL GROUND	
WETLANDS	
BUILDING	

NEW FEATURE LEGEND

SYMBOL LEGEND

SANITARY SEWER MANHOLE		TEE/CROSS FITTING	
STORM DRAIN MANHOLE		ELBOW FITTING	
CATCH BASIN		REDUCER FITTING	
WATER VALVE		MECHANICAL JOINT ADAPTER	
WATER METER		AIR RELEASE VALVE	
FIRE HYDRANT		BLOW OFF VALVE	
CLEANOUT		MAILBOX	
		ANCHOR WALL	

LINETYPE LEGEND

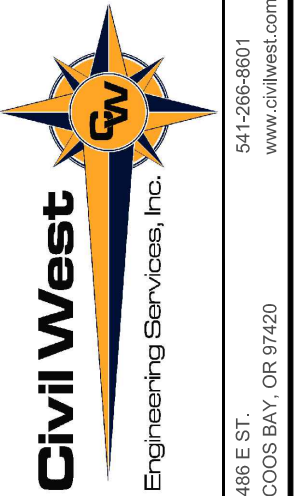
WATER LINE	
STORM DRAIN	
SANITARY SEWER	
ELECTRICAL	
OVER HEAD LINE	
TELEPHONE LINE	
GAS LINE	
CONTOURS	

HATCH LEGEND

CONCRETE	
PAVEMENT	
GRANULAR MATERIALS SUCH AS CRUSHED ROCK OR GRAVEL	
SOIL CUT	
SOIL FILL	

GRADING LEGEND

CUT OR FILL SLOPE-ARROWS POINT DOWN SLOPE	
GRADING SLOPE: 2 HORIZONTAL:1 VERTICAL	
EXISTING GRADE SPOT ELEVATION	
FINISH GRADE SPOT ELEVATION	



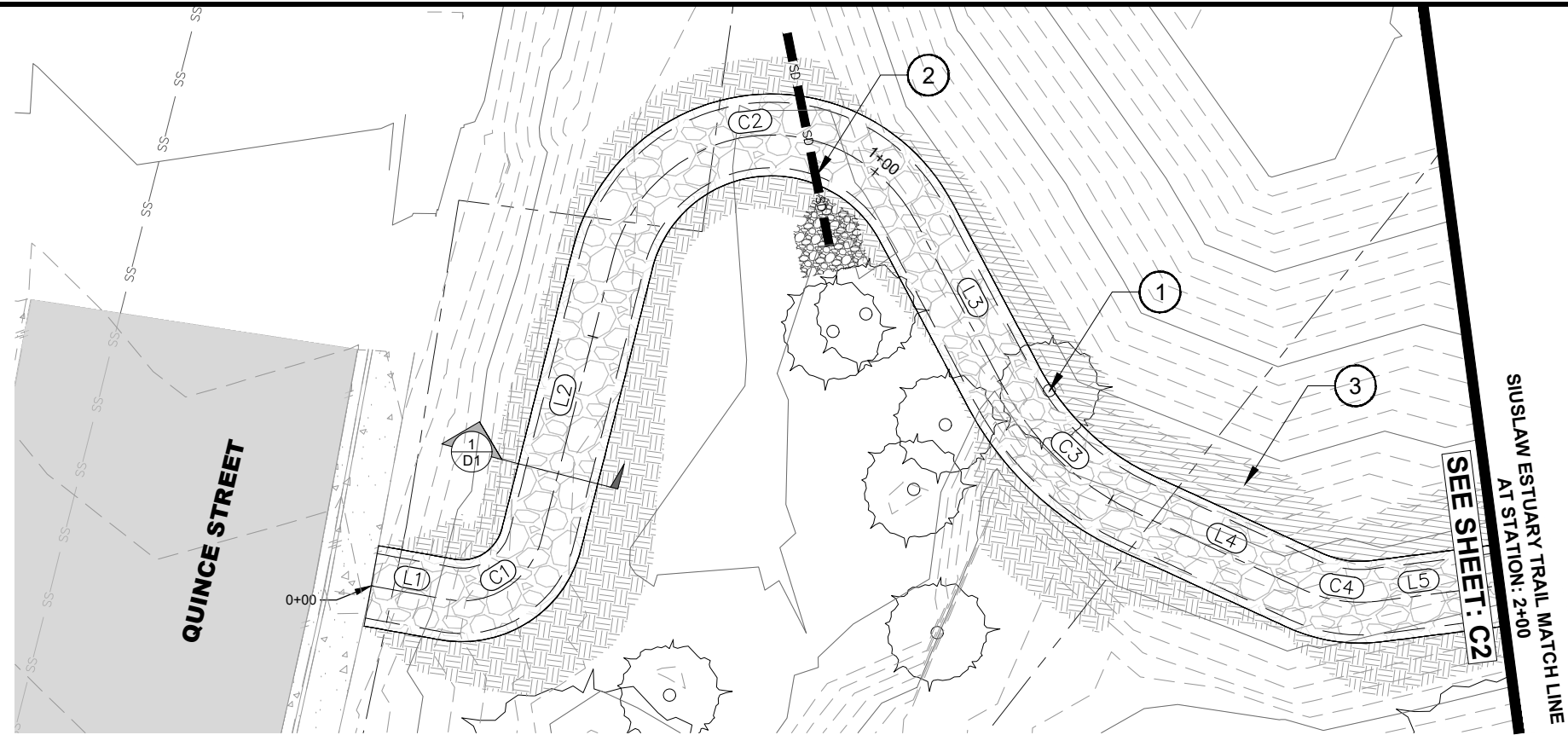
REV.	DATE	DESCRIPTION	BY

DESIGNED BY: JRP
DRAWN BY: JRP
CHECKED BY: SDL
PROJECT NO: 1503-022

City Of Florence LANE COUNTY	SIUSLAW ESTUARY TRAIL	SYMBOLS AND LEGENDS
Date: Sheet No:	G2	
	MARCH, 2023	

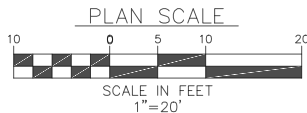
DATE: 3/7/23 FILE: O:\CW_Projects\1503-Florence-Event Center Trail Improvements\04 Final Design\Drawings\DWG\Design Working\Spruce Street Modify.dwg

DATE: 3/13/23 FILE: C:\CW_Projects\1503-022 Florence - Event Center Trail Improvements\04 Final Design\Drawings\DWG\Design Working\Spurce Street_Modify.dwg



PLAN STA 0+00 TO 2+00

NOTE:
FIELD ADJUSTMENTS TO ALIGNMENT AND PROFILE OF PATH WILL BE REQUIRED AND MUST BE COORDINATED WITH THE CITY OR THEIR REPRESENTATIVE(S). NO SEPARATE PAYMENT SHALL BE MADE.

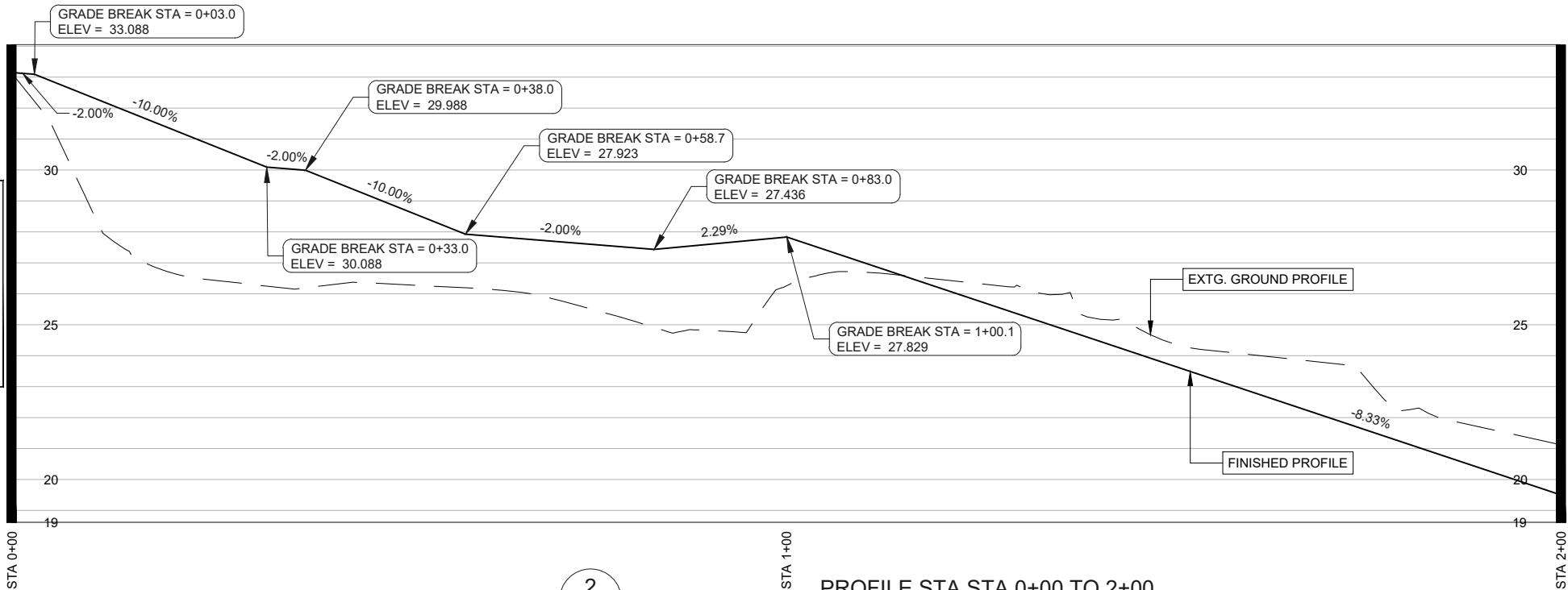


IMPROVEMENT NOTES:

- ① REMOVE EXTG. TREE. SEE SHEET NOTES
- ② 12" STORM DRAIN PIPE INSTALL 5 CY OF 6" D50 RIPRAP
- ③ CUT SLOPES ARE SHOWN AS 1:1. IF STABILIZATION MATERIAL IS NEEDED TO STABILIZE SLOPES THE CITY WILL PROVIDE MATERIAL.

LINE TABLE		
Line #	Direction	Length
L1	S87° 27' 46.36"E	9.484
L2	N06° 38' 41.34"E	35.394
L3	S35° 32' 57.89"E	22.837
L4	S72° 55' 38.37"E	22.470
L5	N75° 07' 18.08"E	27.389

CURVE TABLE					
Curve #	Radius	Length	Chord Direction	Start Point	End Point
C1	9.994	14.982	N49° 35' 27.49"E	(3973613.81,860413.50)	(3973624.18,860422.33)
C2	20.000	48.103	N75° 32' 51.73"E	(3973628.27,860457.49)	(3973664.41,860466.80)
C3	35.000	22.833	S54° 14' 18.13"E	(3973677.69,860448.22)	(3973695.89,860435.11)
C4	16.227	9.049	S88° 54' 10.14"E	(3973717.37,860428.51)	(3973726.30,860428.34)



PROFILE STA STA 0+00 TO 2+00

SCALE HORZ 1"=20'
VERT 1"=5'

SHEET NOTES:

1. CONTRACTOR SHALL CONTACT "ONE CALL" FOR UTILITY LOCATES PRIOR TO THE START OF ANY EXCAVATION.
2. CLEARING HEIGHT SHALL BE 8' ALONG TRAIL ALIGNMENT
3. CONTRACTOR IS RESPONSIBLE FOR OBTAINING ALL PERMITTING REQUIRED BY THE CITY OF FLORENCE
4. CLEARING AND GRUBBING WORK SHALL BE PERFORMED IN STRICT COMPLIANCE WITH ALL CITY, COUNTY, STATE AND FEDERAL LAWS AND REQUIREMENTS PERTAINING TO CLEARING, DISPOSAL, EROSION CONTROL, AND OTHER RELATED OPERATIONS.
5. ALL DISTURBED AREAS SHALL BE RESTORED TO A CONDITION AT LEAST EQUIVALENT TO THE CONDITION PRIOR TO THE CONTRACTOR'S WORK.
6. TREES MUST BE REMOVED WITHOUT DAMAGING ANYTHING ELSE IN THE VICINITY. AFTER THE TREE IS REMOVED, THE STUMP AND ROOTS MUST BE GROUND SUFFICIENTLY AS APPROVED BY THE ENGINEER AND BACKFILLED WITH A SUITABLE BACKFILL AS APPROVED BY THE ENGINEER. ANY DAMAGE CAUSED BY THE REMOVAL OF THE TREE OR AS A PART OF THE TREE REMOVAL PROCESS WILL BE REPLACED, RESTORED OR FIXED AT THE CONTRACTOR'S EXPENSE
7. GRUBBING SHALL BE PERFORMED WITHIN ALL CLEARING AREA LIMITS, AS SPECIFIED ABOVE, TO A DEPTH OF SIX-INCHES (6") BELOW THE GROUND SURFACE, OR SUBGRADE, WHICHEVER IS DEEPER
8. PROTECT AND PRESERVE ALL VEGETATION OUTSIDE THE CUT/FILL SLOPES OF THE EVENT CENTER TRAIL.
9. NOTIFY CITY BEFORE REMOVAL OF ANY VEGETATION
10. ALL CONSTRUCTION ACTIVITY SHALL STAY REMOVED FROM WETLAND AND MUDFLAT DESIGNATED AREAS.
11. RESEED ALL CUT/FILL SLOPES WITH NATIVE SEED MIX.
12. MINIMIZE IMPORTED FILL MATERIAL BY USING NATIVE CUT SLOPE SOILS FOR FILL MATERIAL.
13. MHHW ELEVATION IS EQUAL TO NAVD88 7.21 FT. FINISHED ELEVATIONS OF EVENT CENTER TRAIL SHALL BE ELEVATED ABOVE MHHW.

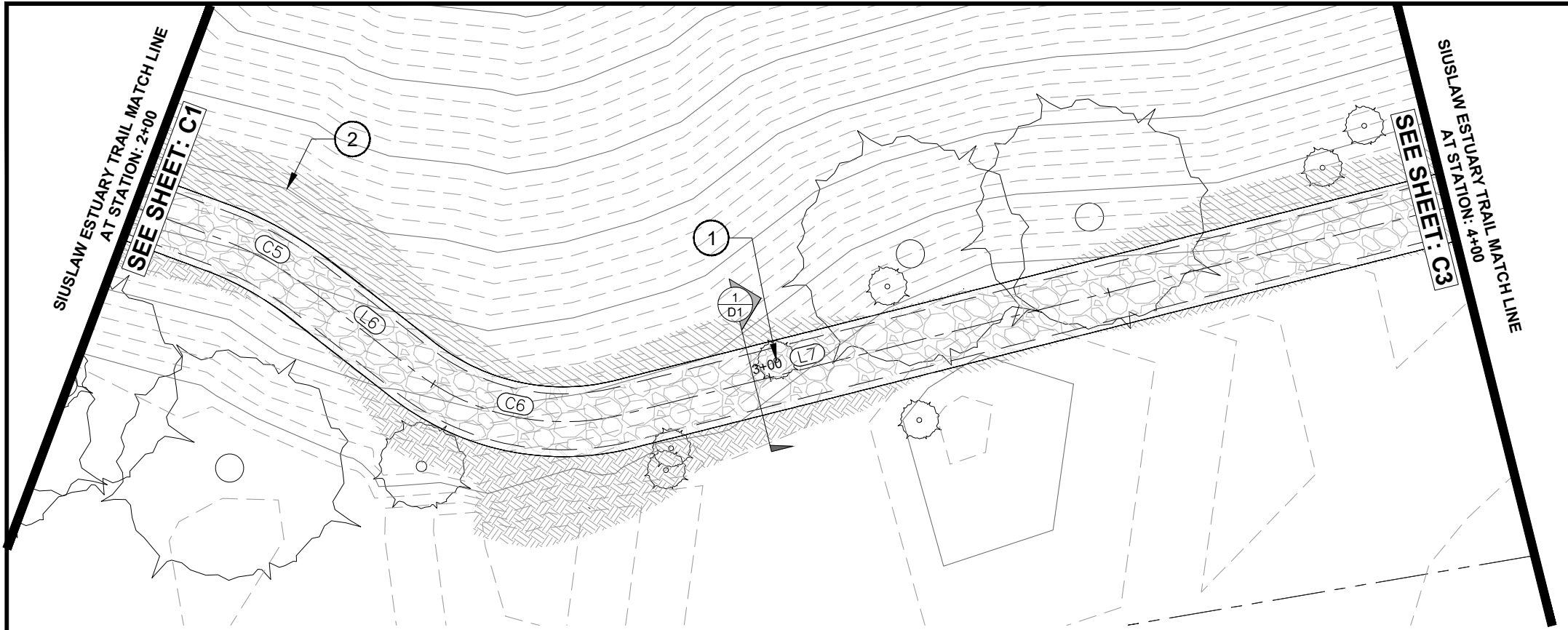


REV.	DATE	DESCRIPTION	BY

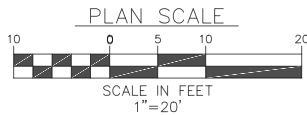
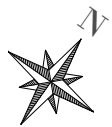
DESIGNED BY: JRP
DRAWN BY: JRP
CHECKED BY: SDL
PROJECT NO.: 1503-022

CITY OF FLORENCE LANE COUNTY	SIUSLAW ESTUARY TRAIL	STA 0+00 TO 2+00
Sheet No. C1	Date MARCH, 2023	

DATE: 3/13/23 FILE: C:\CW_Projects\1503-022 Florence - Event Center Trail Improvements\04 Final Design\Drawings\DWG\Design Working-Spruce Street_Modify.dwg



NOTE:
FIELD ADJUSTMENTS TO ALIGNMENT AND PROFILE OF PATH WILL BE REQUIRED AND MUST BE COORDINATED WITH THE CITY OR THEIR REPRESENTATIVE(S). NO SEPARATE PAYMENT SHALL BE MADE.



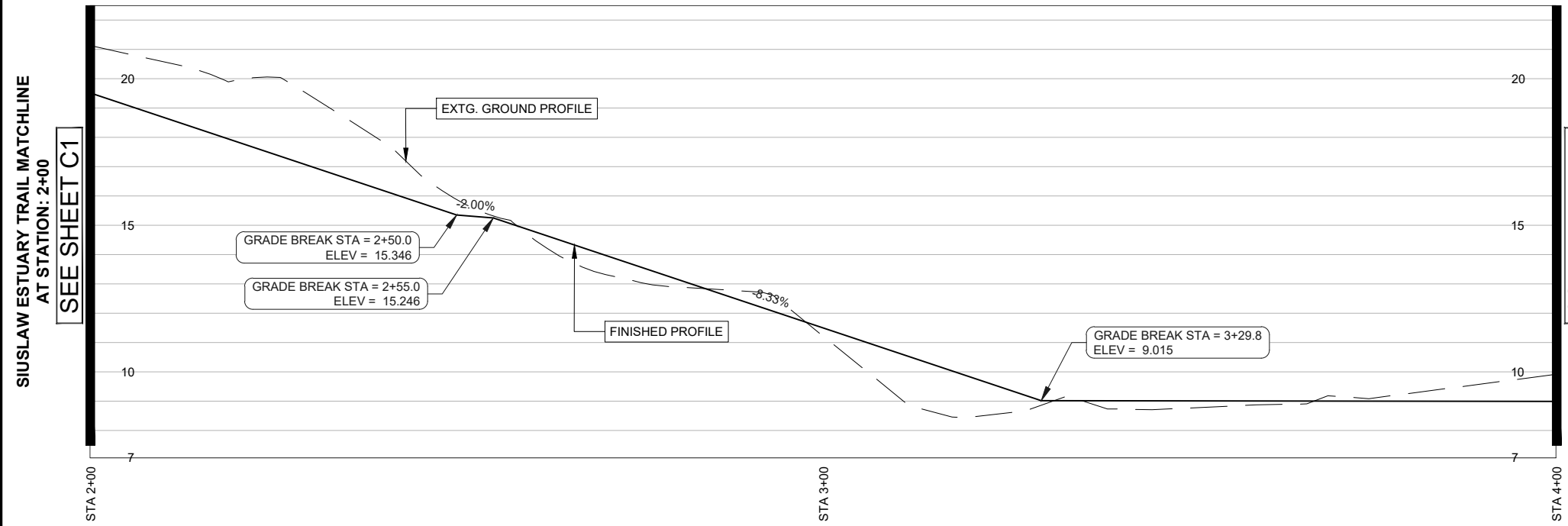
PLAN STA 2+00 TO 4+00

IMPROVEMENT NOTES:

- ① REMOVE EXTG. TREE. SEE SHEET NOTES
- ② CUT SLOPES ARE SHOWN AS 1:1. IF STABILIZATION MATERIAL IS NEEDED TO STABILIZE SLOPES THE CITY WILL PROVIDE MATERIAL.

LINE TABLE		
Line #	Direction	Length
L6	S87° 06' 23.32"E	18.393
L7	N40° 39' 42.79"E	55.317

CURVE TABLE					
Curve #	Radius	Length	Chord Direction	Start Point	End Point
C5	50.000	15.489	N83° 59' 46.75"E	(3973752.77,860435.37)	(3973768.11,860436.99)
C6	35.000	31.906	N66° 46' 39.74"E	(3973786.48,860436.06)	(3973814.80,860448.21)

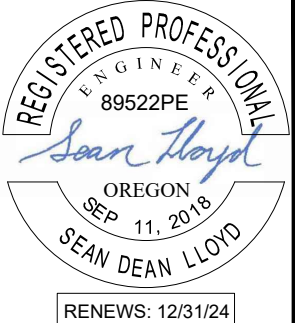


PROFILE STA STA 2+00 TO 4+00

SCALE HORZ 1"=20'
VERT 1"=5'

SHEET NOTES:

1. CONTRACTOR SHALL CONTACT "ONE CALL" FOR UTILITY LOCATES PRIOR TO THE START OF ANY EXCAVATION.
2. CLEARING HEIGHT SHALL BE 8' ALONG TRAIL ALIGNMENT
3. CONTRACTOR IS RESPONSIBLE FOR OBTAINING ALL PERMITTING REQUIRED BY THE CITY OF FLORENCE
4. CLEARING AND GRUBBING WORK SHALL BE PERFORMED IN STRICT COMPLIANCE WITH ALL CITY, COUNTY, STATE AND FEDERAL LAWS AND REQUIREMENTS PERTAINING TO CLEARING, DISPOSAL, EROSION CONTROL, AND OTHER RELATED OPERATIONS.
5. ALL DISTURBED AREAS SHALL BE RESTORED TO A CONDITION AT LEAST EQUIVALENT TO THE CONDITION PRIOR TO THE CONTRACTOR'S WORK.
6. TREES MUST BE REMOVED WITHOUT DAMAGING ANYTHING ELSE IN THE VICINITY. AFTER THE TREE IS REMOVED, THE STUMP AND ROOTS MUST BE GROUND SUFFICIENTLY AS APPROVED BY THE ENGINEER AND BACKFILLED WITH A SUITABLE BACKFILL AS APPROVED BY THE ENGINEER. ANY DAMAGE CAUSED BY THE REMOVAL OF THE TREE OR AS A PART OF THE TREE REMOVAL PROCESS WILL BE REPLACED, RESTORED OR FIXED AT THE CONTRACTOR'S EXPENSE
7. GRUBBING SHALL BE PERFORMED WITHIN ALL CLEARING AREA LIMITS, AS SPECIFIED ABOVE, TO A DEPTH OF SIX-INCHES (6") BELOW THE GROUND SURFACE, OR SUBGRADE, WHICHEVER IS DEEPER
8. PROTECT AND PRESERVE ALL VEGETATION OUTSIDE THE CUT/FILL SLOPES OF THE EVENT CENTER TRAIL.
9. NOTIFY CITY BEFORE REMOVAL OF ANY VEGETATION
10. ALL CONSTRUCTION ACTIVITY SHALL STAY REMOVED FROM WETLAND AND MUDFLAT DESIGNATED AREAS.
11. RESEED ALL CUT/FILL SLOPES WITH NATIVE SEED MIX.
12. MINIMIZE IMPORTED FILL MATERIAL BY USING NATIVE CUT SLOPE SOILS FOR FILL MATERIAL.
13. MHHW ELEVATION IS EQUAL TO NAVD88 7.21 FT. FINISHED ELEVATIONS OF EVENT CENTER TRAIL SHALL BE ELEVATED ABOVE MHHW.



REV.	DATE	DESCRIPTION	BY

DESIGNED BY: JRP
DRAWN BY: JRP
CHECKED BY: SDL
PROJECT NO: 1503-022

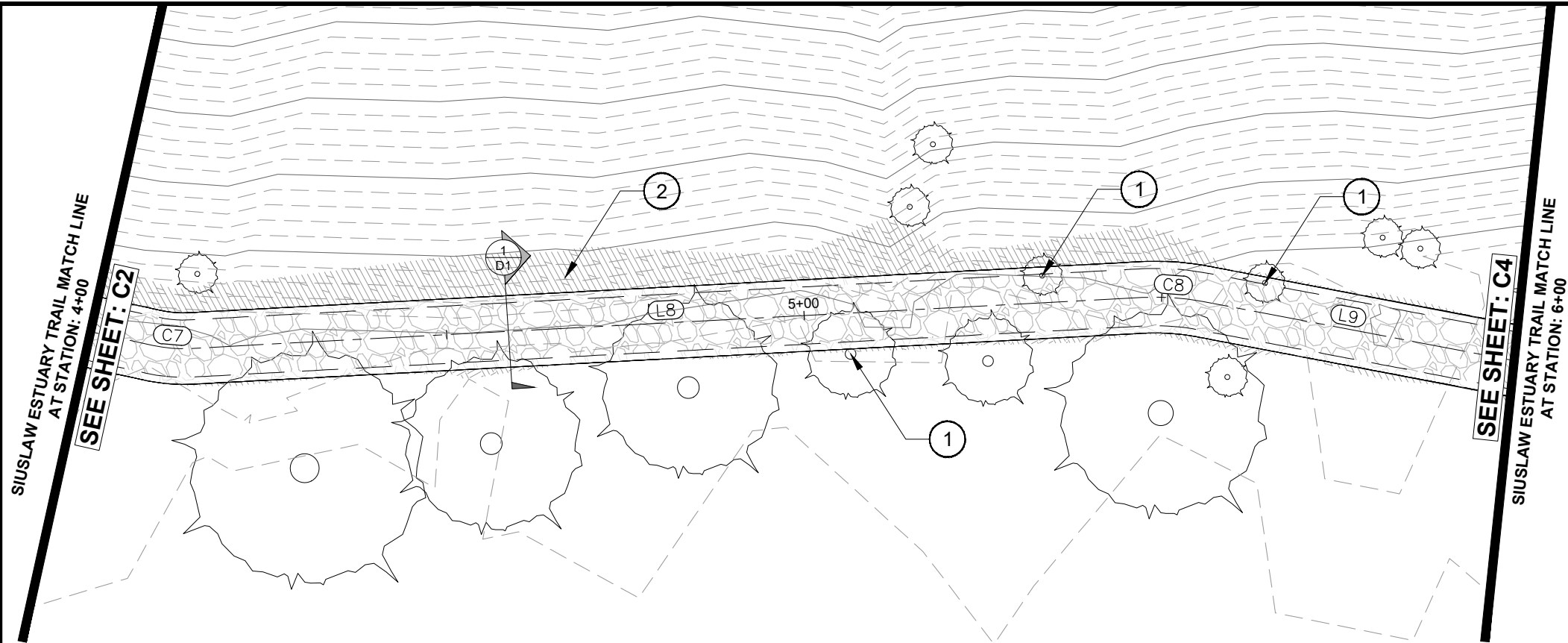
CITY OF FLORENCE
LANE COUNTY

SIUSLAW ESTUARY TRAIL

STA 2+00 TO 4+00

Sheet No: **C2**
Date: **MARCH, 2023**

DATE: 3/13/23 FILE: C:\CW_Projects\1503-Florence\1503-022-Florence - Event Center Trail Improvements\04-Final Design\Drawings\Design Working-Sources Street.Modify.dwg

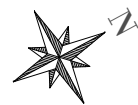


IMPROVEMENT NOTES:

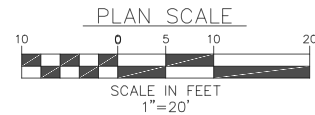
- ① REMOVE EXTG. TREE. SEE SHEET NOTES
- ② CUT SLOPES ARE SHOWN AS 1:1. IF STABILIZATION MATERIAL IS NEEDED TO STABILIZE SLOPES THE CITY WILL PROVIDE MATERIAL.

LINE TABLE		
Line #	Direction	Length
L8	N25° 12' 38.07"E	133.110
L9	N39° 00' 59.89"E	51.642

NOTE:
FIELD ADJUSTMENTS TO ALIGNMENT AND PROFILE OF PATH WILL BE REQUIRED AND MUST BE COORDINATED WITH THE CITY OR THEIR REPRESENTATIVE(S). NO SEPARATE PAYMENT SHALL BE MADE.

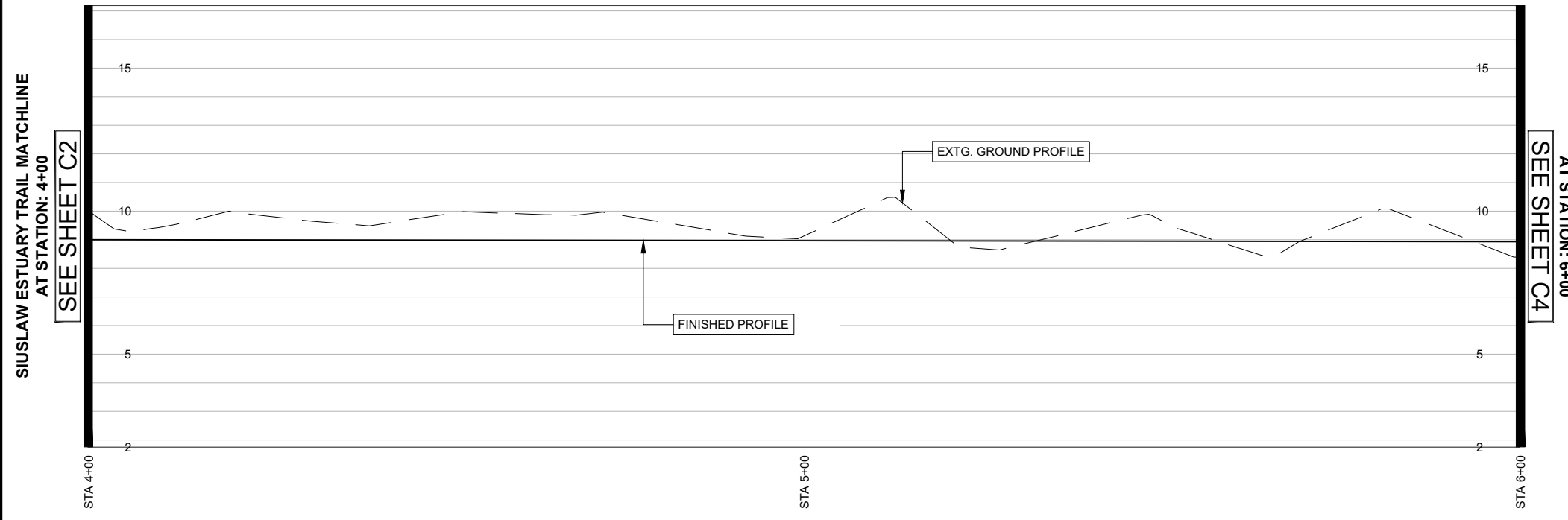


①
C3



PLAN STA 4+00 TO 6+00

CURVE TABLE					
Curve #	Radius	Length	Chord Direction	Start Point	End Point
C7	20.000	5.394	N32° 56' 10.43"E	(3973899.82,860547.19)	(3973902.75,860551.71)
C8	35.000	8.434	N32° 06' 48.98"E	(3973959.45,860672.14)	(3973963.92,860679.28)



②
C3

PROFILE STA STA 4+00 TO 6+00

SCALE HORIZ 1"=20'
VERT 1"=5'

SHEET NOTES:

1. CONTRACTOR SHALL CONTACT "ONE CALL" FOR UTILITY LOCATES PRIOR TO THE START OF ANY EXCAVATION.
2. CLEARING HEIGHT SHALL BE 8' ALONG TRAIL ALIGNMENT
3. CONTRACTOR IS RESPONSIBLE FOR OBTAINING ALL PERMITTING REQUIRED BY THE CITY OF FLORENCE
4. CLEARING AND GRUBBING WORK SHALL BE PERFORMED IN STRICT COMPLIANCE WITH ALL CITY, COUNTY, STATE AND FEDERAL LAWS AND REQUIREMENTS PERTAINING TO CLEARING, DISPOSAL, EROSION CONTROL, AND OTHER RELATED OPERATIONS.
5. ALL DISTURBED AREAS SHALL BE RESTORED TO A CONDITION AT LEAST EQUIVALENT TO THE CONDITION PRIOR TO THE CONTRACTOR'S WORK.
6. TREES MUST BE REMOVED WITHOUT DAMAGING ANYTHING ELSE IN THE VICINITY. AFTER THE TREE IS REMOVED, THE STUMP AND ROOTS MUST BE GROUND SUFFICIENTLY AS APPROVED BY THE ENGINEER AND BACKFILLED WITH A SUITABLE BACKFILL AS APPROVED BY THE ENGINEER. ANY DAMAGE CAUSED BY THE REMOVAL OF THE TREE OR AS A PART OF THE TREE REMOVAL PROCESS WILL BE REPLACED, RESTORED OR FIXED AT THE CONTRACTOR'S EXPENSE
7. GRUBBING SHALL BE PERFORMED WITHIN ALL CLEARING AREA LIMITS, AS SPECIFIED ABOVE, TO A DEPTH OF SIX-INCHES (6") BELOW THE GROUND SURFACE, OR SUBGRADE, WHICHEVER IS DEEPER
8. PROTECT AND PRESERVE ALL VEGETATION OUTSIDE THE CUT/FILL SLOPES OF THE EVENT CENTER TRAIL.
9. NOTIFY CITY BEFORE REMOVAL OF ANY VEGETATION
10. ALL CONSTRUCTION ACTIVITY SHALL STAY REMOVED FROM WETLAND AND MUDFLAT DESIGNATED AREAS.
11. RESEED ALL CUT/FILL SLOPES WITH NATIVE SEED MIX.
12. MINIMIZE IMPORTED FILL MATERIAL BY USING NATIVE CUT SLOPE SOILS FOR FILL MATERIAL.
13. MHHW ELEVATION IS EQUAL TO NAVD88 7.21 FT. FINISHED ELEVATIONS OF EVENT CENTER TRAIL SHALL BE ELEVATED ABOVE MHHW.



RENEWS: 12/31/24



REV.	DATE	DESCRIPTION	BY

DESIGNED BY: JRP
DRAWN BY: JRP
CHECKED BY: SDL
PROJECT NO.: 1503-022

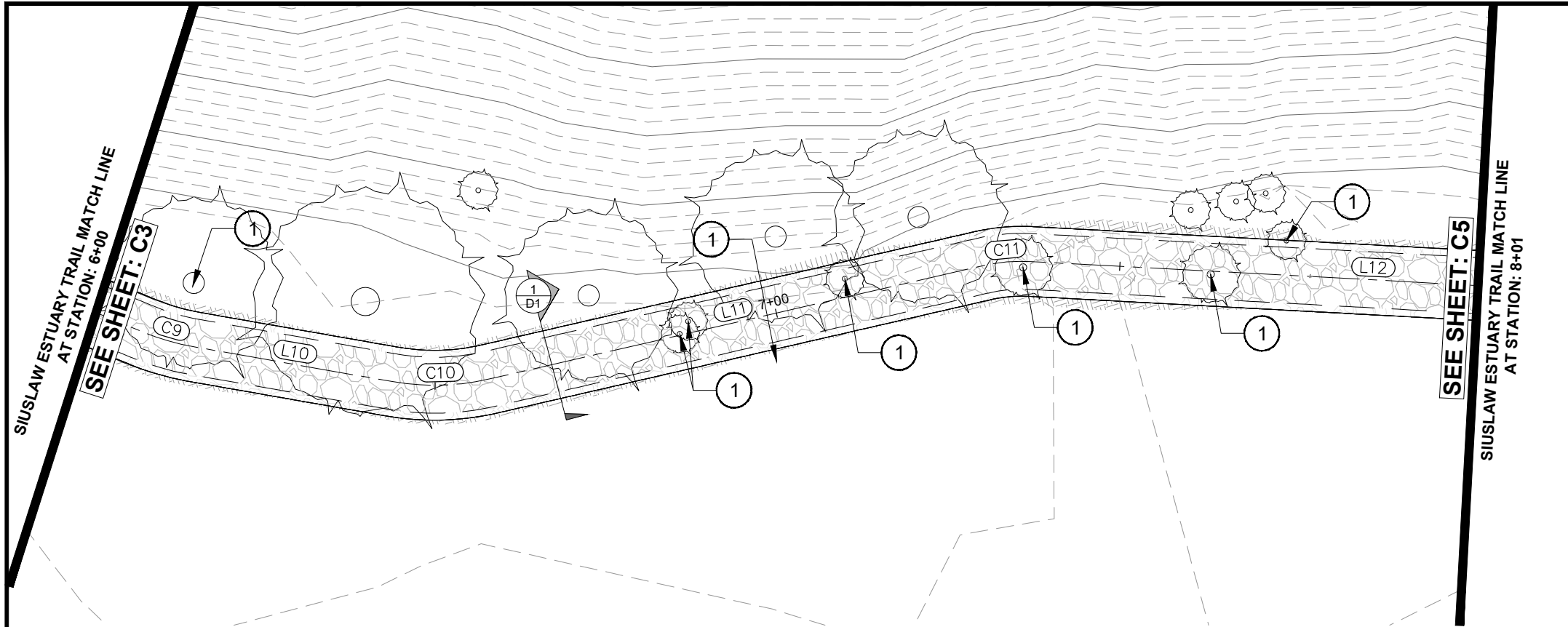
CITY OF FLORENCE
LANE COUNTY

SIUSLAW ESTUARY TRAIL

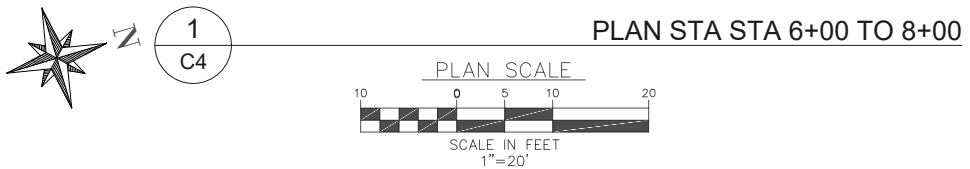
STA 4+00 TO 6+00

Sheet No. **C3**
Date **MARCH, 2023**

DATE: 3/13/23 FILE: C:\CW_Projects\1503-022 Florence - Event Center Trail Improvements\04_Final Design\Drawings\Design_Workings\Source Street_Modify.dwg



NOTE:
FIELD ADJUSTMENTS TO ALIGNMENT AND PROFILE OF PATH WILL BE REQUIRED AND MUST BE COORDINATED WITH THE CITY OR THEIR REPRESENTATIVE(S). NO SEPARATE PAYMENT SHALL BE MADE.

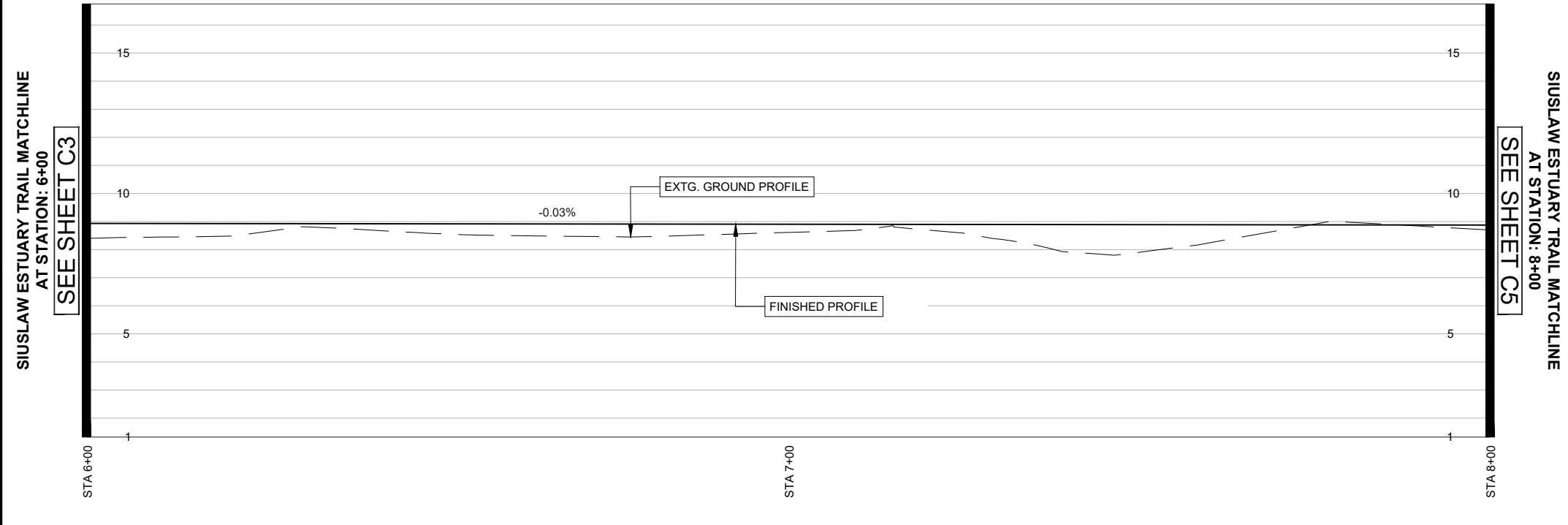


IMPROVEMENT NOTES:

① REMOVE EXTG. TREE. SEE SHEET NOTES

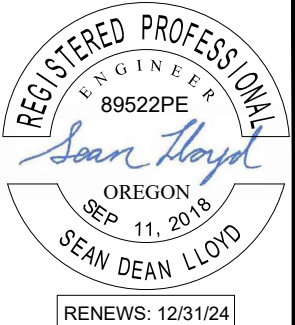
LINE TABLE		
Line #	Direction	Length
L10	N26° 30' 15.68"E	28.806
L11	N03° 37' 35.22"E	72.464
L12	N19° 38' 27.60"E	97.961

CURVE TABLE					
Curve #	Radius	Length	Chord Direction	Start Point	End Point
C9	35.000	7.643	N32° 45' 37.78"E	(3973996.43,860719.39)	(3974000.56,860725.80)
C10	35.000	13.975	N15° 03' 55.45"E	(3974013.41,860751.58)	(3974017.02,860764.99)
C11	25.000	6.988	N11° 38' 01.41"E	(3974021.60,860837.31)	(3974023.01,860844.13)



2
C4
PROFILE STA STA 6+00 TO 8+00
SCALE HORZ 1"=20'
VERT 1"=5'

- SHEET NOTES:**
- CONTRACTOR SHALL CONTACT "ONE CALL" FOR UTILITY LOCATES PRIOR TO THE START OF ANY EXCAVATION.
 - CLEARING HEIGHT SHALL BE 8' ALONG TRAIL ALIGNMENT
 - CONTRACTOR IS RESPONSIBLE FOR OBTAINING ALL PERMITTING REQUIRED BY THE CITY OF FLORENCE
 - CLEARING AND GRUBBING WORK SHALL BE PERFORMED IN STRICT COMPLIANCE WITH ALL CITY, COUNTY, STATE AND FEDERAL LAWS AND REQUIREMENTS PERTAINING TO CLEARING, DISPOSAL, EROSION CONTROL, AND OTHER RELATED OPERATIONS.
 - ALL DISTURBED AREAS SHALL BE RESTORED TO A CONDITION AT LEAST EQUIVALENT TO THE CONDITION PRIOR TO THE CONTRACTOR'S WORK.
 - TREES MUST BE REMOVED WITHOUT DAMAGING ANYTHING ELSE IN THE VICINITY. AFTER THE TREE IS REMOVED, THE STUMP AND ROOTS MUST BE GROUND SUFFICIENTLY AS APPROVED BY THE ENGINEER AND BACKFILLED WITH A SUITABLE BACKFILL AS APPROVED BY THE ENGINEER. ANY DAMAGE CAUSED BY THE REMOVAL OF THE TREE OR AS A PART OF THE TREE REMOVAL PROCESS WILL BE REPLACED, RESTORED OR FIXED AT THE CONTRACTOR'S EXPENSE
 - GRUBBING SHALL BE PERFORMED WITHIN ALL CLEARING AREA LIMITS, AS SPECIFIED ABOVE, TO A DEPTH OF SIX-INCHES (6") BELOW THE GROUND SURFACE, OR SUBGRADE, WHICHEVER IS DEEPER
 - PROTECT AND PRESERVE ALL VEGETATION OUTSIDE THE CUT/FILL SLOPES OF THE EVENT CENTER TRAIL.
 - NOTIFY CITY BEFORE REMOVAL OF ANY VEGETATION
 - ALL CONSTRUCTION ACTIVITY SHALL STAY REMOVED FROM WETLAND AND MUDFLAT DESIGNATED AREAS.
 - RESEED ALL CUT/FILL SLOPES WITH NATIVE SEED MIX.
 - MINIMIZE IMPORTED FILL MATERIAL BY USING NATIVE CUT SLOPE SOILS FOR FILL MATERIAL.
 - MHHW ELEVATION IS EQUAL TO NAVD88 7.21 FT. FINISHED ELEVATIONS OF EVENT CENTER TRAIL SHALL BE ELEVATED ABOVE MHHW.



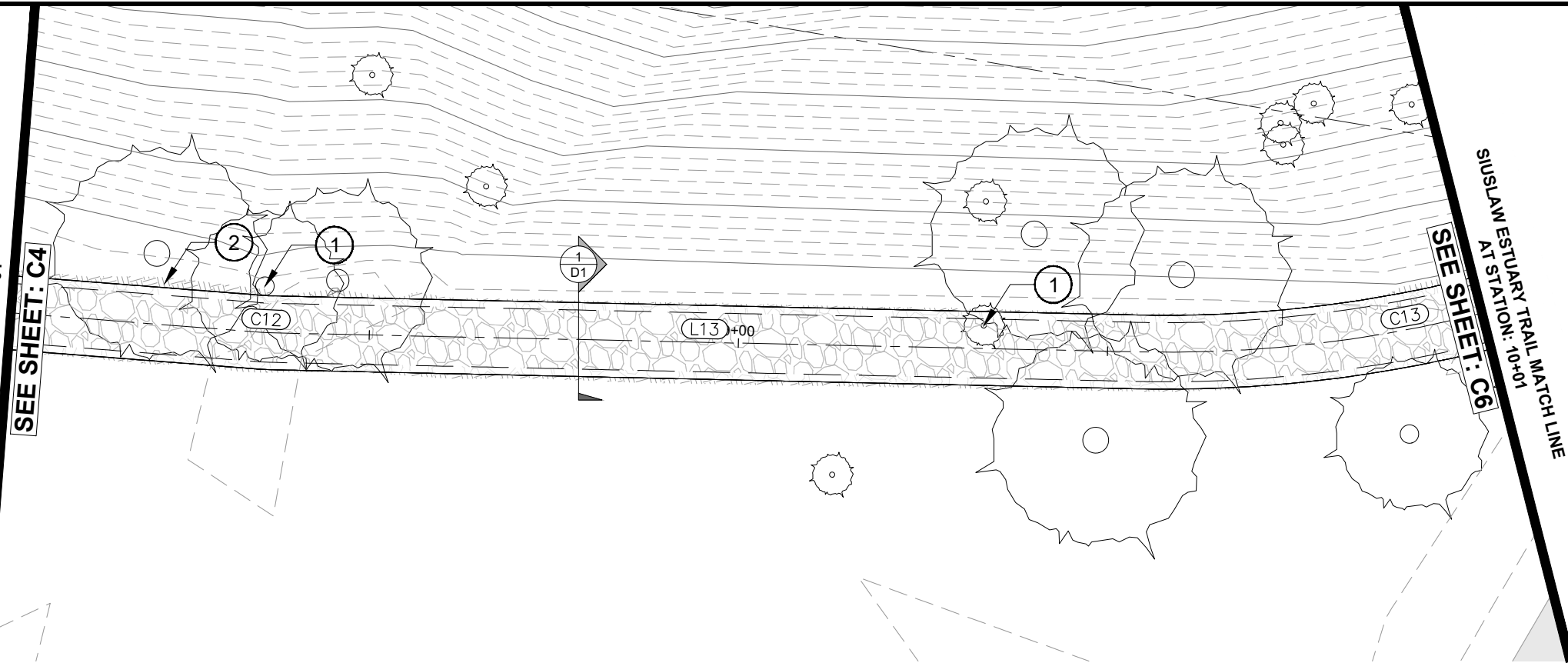
REV.	DATE	DESCRIPTION	BY

DESIGNED BY: JRP
DRAWN BY: JRP
CHECKED BY: SDL
PROJECT NO.: 1503-022

CITY OF FLORENCE LANE COUNTY	SIUSLAW ESTUARY TRAIL	STA 6+00 TO 8+00
Sheet No. C4	Date MARCH, 2023	

DATE: 3/13/23 FILE: C:\CW_Projects\1503-Florence\1503-022-Florence - Event Center Trail Improvements\04-Final Design\Drawings\DWG\Design-Workings-Sources Street_Modify.dwg

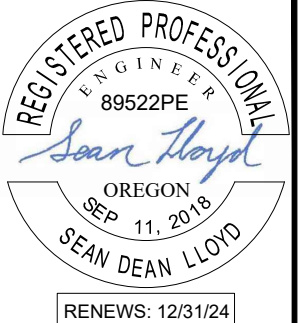
SIUSLAW ESTUARY TRAIL MATCH LINE
AT STATION: 8+00
SEE SHEET: C4



SEE SHEET: C6
SIUSLAW ESTUARY TRAIL MATCH LINE
AT STATION: 10+00

IMPROVEMENT NOTES:

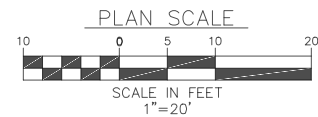
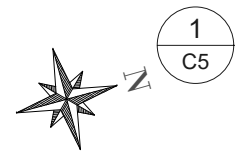
- ① REMOVE EXTG. TREE. SEE SHEET NOTES
- ② CUT SLOPES ARE SHOWN AS 1:1. IF STABILIZATION MATERIAL IS NEEDED TO STABILIZE SLOPES THE CITY WILL PROVIDE MATERIAL.



Civil West
Engineering Services, Inc.
486 E. ST.
COOS BAY, OR 97420
541-266-8601
www.civilwest.com

LINE TABLE		
Line #	Direction	Length
L13	N16° 26' 34.39"E	117.549

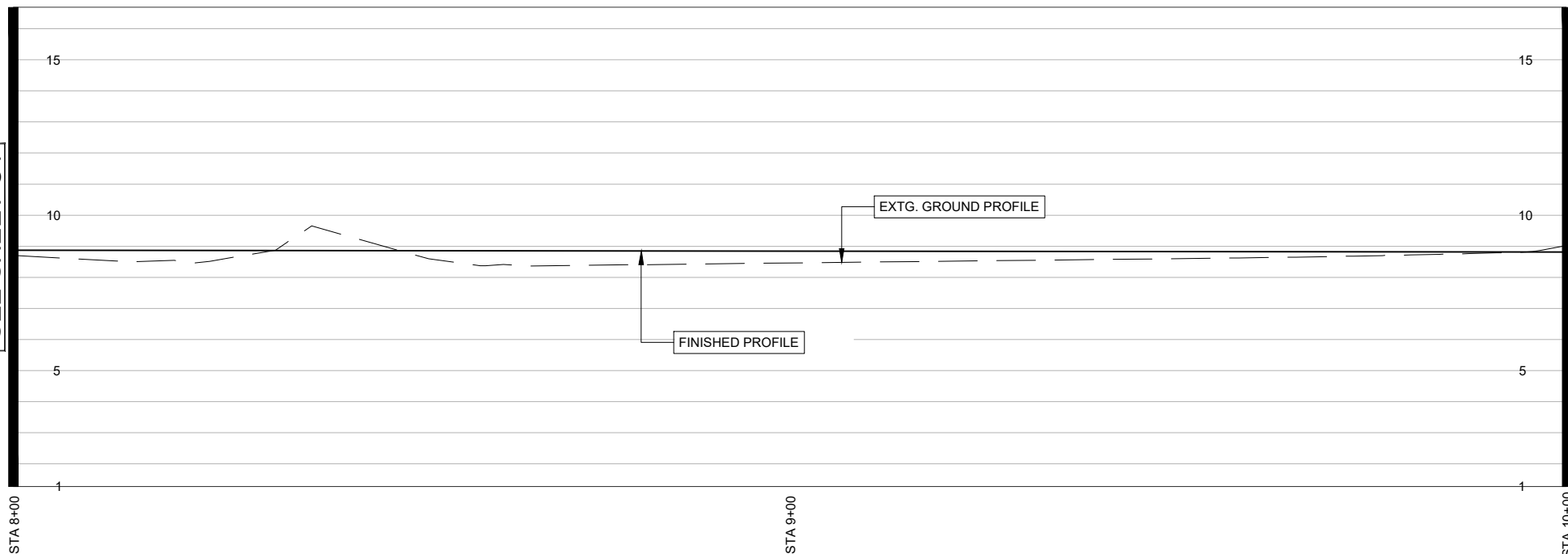
NOTE:
FIELD ADJUSTMENTS TO ALIGNMENT AND PROFILE OF PATH WILL BE REQUIRED AND MUST BE COORDINATED WITH THE CITY OR THEIR REPRESENTATIVE(S). NO SEPARATE PAYMENT SHALL BE MADE.



PLAN STA 8+00 TO 10+00

CURVE TABLE					
Curve #	Radius	Length	Chord Direction	Start Point	End Point
C9	35.000	7.643	N32° 45' 37.78"E	(3973996.43,860719.39)	(3974000.56,860725.80)
C10	35.000	13.975	N15° 03' 55.45"E	(3974013.41,860751.58)	(3974017.02,860764.99)
C11	25.000	6.988	N11° 38' 01.41"E	(3974021.60,860837.31)	(3974023.01,860844.13)

SIUSLAW ESTUARY TRAIL MATCHLINE
AT STATION: 8+00
SEE SHEET C4



SEE SHEET C6
SIUSLAW ESTUARY TRAIL MATCHLINE
AT STATION: 10+00



PROFILE STA STA 8+00 TO 10+00

SCALE HORZ 1"=20'
VERT 1"=5'

SHEET NOTES:

1. CONTRACTOR SHALL CONTACT "ONE CALL" FOR UTILITY LOCATES PRIOR TO THE START OF ANY EXCAVATION.
2. CLEARING HEIGHT SHALL BE 8' ALONG TRAIL ALIGNMENT
3. CONTRACTOR IS RESPONSIBLE FOR OBTAINING ALL PERMITTING REQUIRED BY THE CITY OF FLORENCE
4. CLEARING AND GRUBBING WORK SHALL BE PERFORMED IN STRICT COMPLIANCE WITH ALL CITY, COUNTY, STATE AND FEDERAL LAWS AND REQUIREMENTS PERTAINING TO CLEARING, DISPOSAL, EROSION CONTROL, AND OTHER RELATED OPERATIONS.
5. ALL DISTURBED AREAS SHALL BE RESTORED TO A CONDITION AT LEAST EQUIVALENT TO THE CONDITION PRIOR TO THE CONTRACTOR'S WORK.
6. TREES MUST BE REMOVED WITHOUT DAMAGING ANYTHING ELSE IN THE VICINITY. AFTER THE TREE IS REMOVED, THE STUMP AND ROOTS MUST BE GROUND SUFFICIENTLY AS APPROVED BY THE ENGINEER AND BACKFILLED WITH A SUITABLE BACKFILL AS APPROVED BY THE ENGINEER. ANY DAMAGE CAUSED BY THE REMOVAL OF THE TREE OR AS A PART OF THE TREE REMOVAL PROCESS WILL BE REPLACED, RESTORED OR FIXED AT THE CONTRACTOR'S EXPENSE
7. GRUBBING SHALL BE PERFORMED WITHIN ALL CLEARING AREA LIMITS, AS SPECIFIED ABOVE, TO A DEPTH OF SIX-INCHES (6") BELOW THE GROUND SURFACE, OR SUBGRADE, WHICHEVER IS DEEPER
8. PROTECT AND PRESERVE ALL VEGETATION OUTSIDE THE CUT/FILL SLOPES OF THE EVENT CENTER TRAIL.
9. NOTIFY CITY BEFORE REMOVAL OF ANY VEGETATION
10. ALL CONSTRUCTION ACTIVITY SHALL STAY REMOVED FROM WETLAND AND MUDFLAT DESIGNATED AREAS.
11. RESEED ALL CUT/FILL SLOPES WITH NATIVE SEED MIX.
12. MINIMIZE IMPORTED FILL MATERIAL BY USING NATIVE CUT SLOPE SOILS FOR FILL MATERIAL.
13. MHHW ELEVATION IS EQUAL TO NAVD88 7.21 FT. FINISHED ELEVATIONS OF EVENT CENTER TRAIL SHALL BE ELEVATED ABOVE MHHW.

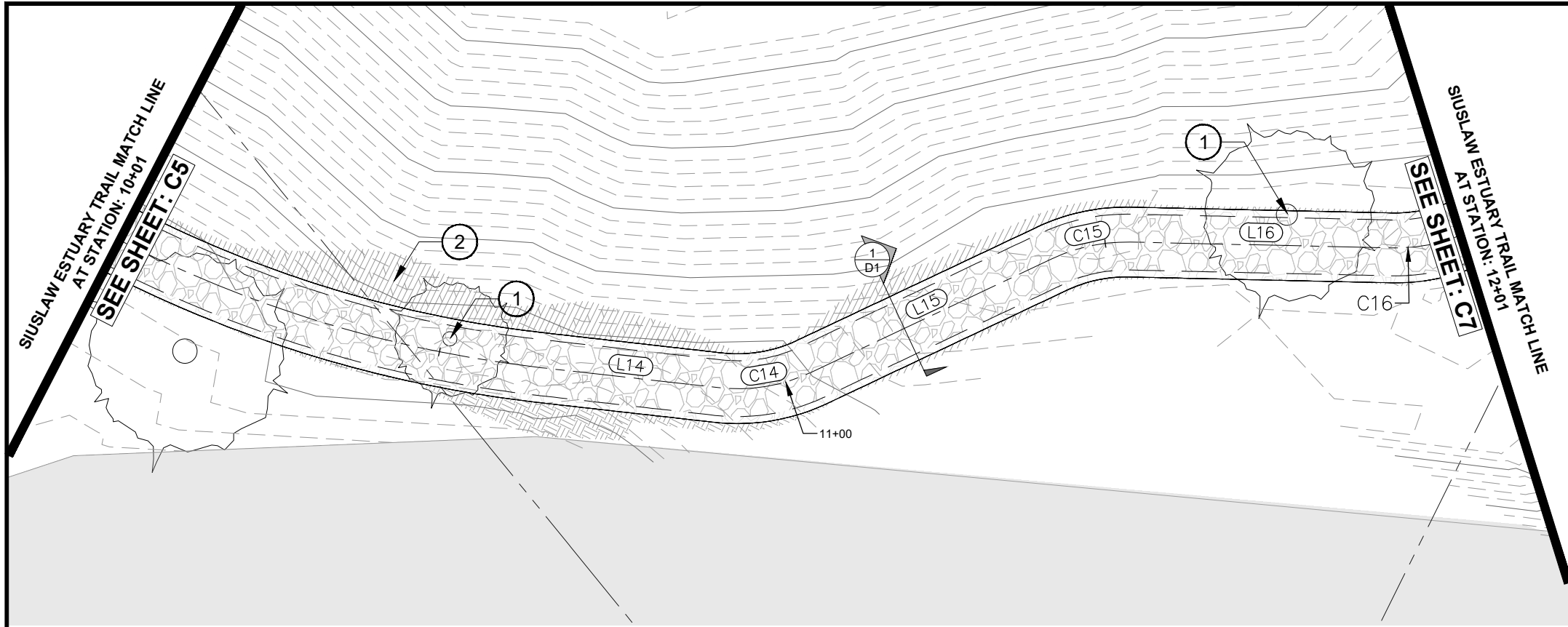
REV.	DATE	DESCRIPTION	BY

DESIGNED BY: JRP
DRAWN BY: JRP
CHECKED BY: SDL
PROJECT NO: 1503-022

CITY OF FLORENCE
LANE COUNTY
SIUSLAW ESTUARY TRAIL
STA 8+00 TO 10+00

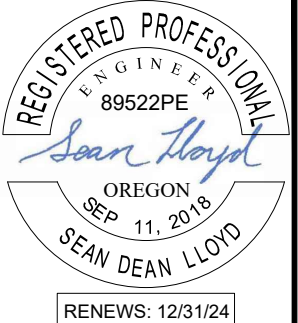
Sheet No: **C5**
Date: **MARCH, 2023**

DATE: 3/13/23 FILE: C:\CW_Projects\1503-Florence\1503-022-Florence - Event Center Trail Improvements\04-Final Design\Drawings\Design Working-Sources Street.Modify.dwg



IMPROVEMENT NOTES:

- ① REMOVE EXTG. TREE. SEE SHEET NOTES
- ② CUT SLOPES ARE SHOWN AS 1:1. IF STABILIZATION MATERIAL IS NEEDED TO STABILIZE SLOPES THE CITY WILL PROVIDE MATERIAL.



Civil West
Engineering Services, Inc.
486 E. ST.
COOS BAY, OR 97420
541-266-8601
www.civilwest.com

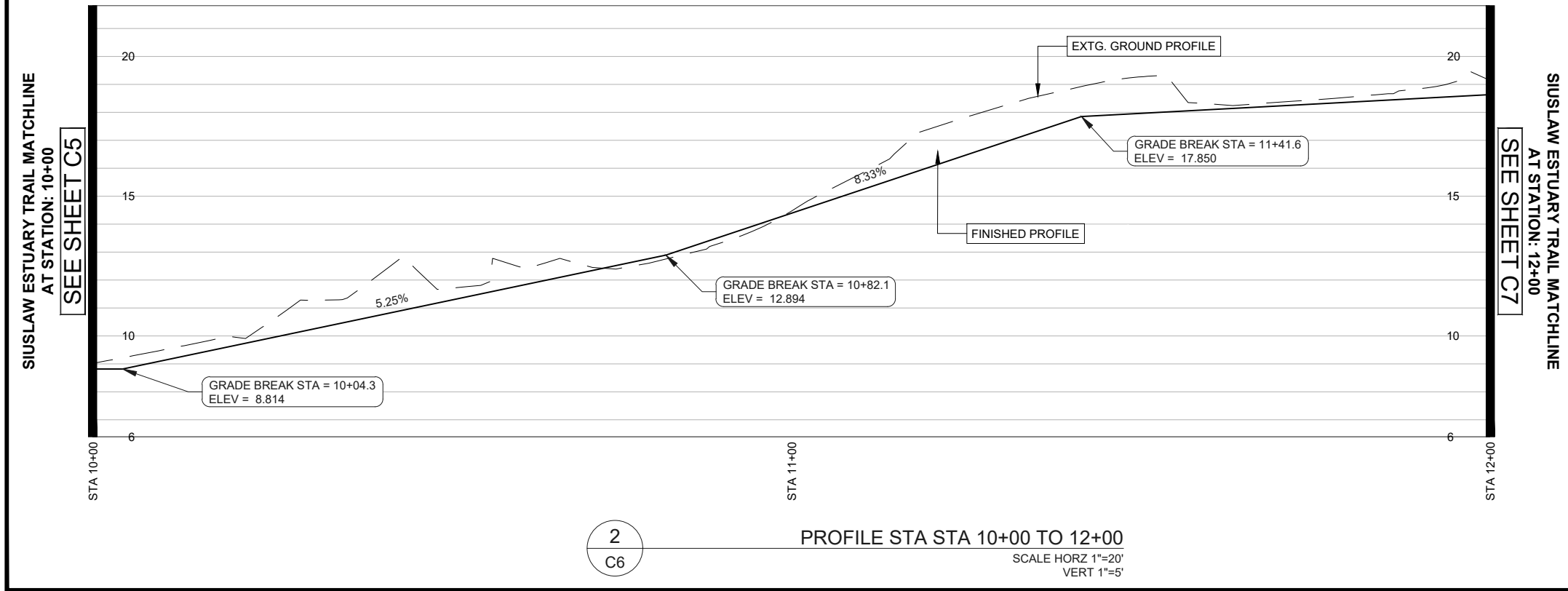
LINE TABLE		
Line #	Direction	Length
L14	N19° 45' 46.38"W	25.438
L15	N51° 29' 46.43"W	37.952
L16	N24° 56' 35.87"W	37.406

CURVE TABLE					
Curve #	Radius	Length	Chord Direction	Start Point	End Point
C14	25.000	13.846	N35° 37' 46.41"W	(3974077.89,861183.11)	(3974069.93,861194.22)
C15	25.000	11.586	N38° 13' 11.15"W	(3974040.23,861217.84)	(3974033.12,861226.86)
C16	25.000	28.328	N57° 24' 18.92"W	(3974017.35,861260.78)	(3973994.74,861275.24)

NOTE:
FIELD ADJUSTMENTS TO ALIGNMENT AND PROFILE OF PATH WILL BE REQUIRED AND MUST BE COORDINATED WITH THE CITY OR THEIR REPRESENTATIVE(S). NO SEPARATE PAYMENT SHALL BE MADE.



PLAN STA 10+00 TO 12+00



SHEET NOTES:

1. CONTRACTOR SHALL CONTACT "ONE CALL" FOR UTILITY LOCATES PRIOR TO THE START OF ANY EXCAVATION.
2. CLEARING HEIGHT SHALL BE 8' ALONG TRAIL ALIGNMENT
3. CONTRACTOR IS RESPONSIBLE FOR OBTAINING ALL PERMITTING REQUIRED BY THE CITY OF FLORENCE
4. CLEARING AND GRUBBING WORK SHALL BE PERFORMED IN STRICT COMPLIANCE WITH ALL CITY, COUNTY, STATE AND FEDERAL LAWS AND REQUIREMENTS PERTAINING TO CLEARING, DISPOSAL, EROSION CONTROL, AND OTHER RELATED OPERATIONS.
5. ALL DISTURBED AREAS SHALL BE RESTORED TO A CONDITION AT LEAST EQUIVALENT TO THE CONDITION PRIOR TO THE CONTRACTOR'S WORK.
6. TREES MUST BE REMOVED WITHOUT DAMAGING ANYTHING ELSE IN THE VICINITY. AFTER THE TREE IS REMOVED, THE STUMP AND ROOTS MUST BE GROUND SUFFICIENTLY AS APPROVED BY THE ENGINEER AND BACKFILLED WITH A SUITABLE BACKFILL AS APPROVED BY THE ENGINEER. ANY DAMAGE CAUSED BY THE REMOVAL OF THE TREE OR AS A PART OF THE TREE REMOVAL PROCESS WILL BE REPLACED, RESTORED OR FIXED AT THE CONTRACTOR'S EXPENSE
7. GRUBBING SHALL BE PERFORMED WITHIN ALL CLEARING AREA LIMITS, AS SPECIFIED ABOVE, TO A DEPTH OF SIX-INCHES (6") BELOW THE GROUND SURFACE, OR SUBGRADE, WHICHEVER IS DEEPER
8. PROTECT AND PRESERVE ALL VEGETATION OUTSIDE THE CUT/FILL SLOPES OF THE EVENT CENTER TRAIL.
9. NOTIFY CITY BEFORE REMOVAL OF ANY VEGETATION
10. ALL CONSTRUCTION ACTIVITY SHALL STAY REMOVED FROM WETLAND AND MUDFLAT DESIGNATED AREAS.
11. RESEED ALL CUT/FILL SLOPES WITH NATIVE SEED MIX.
12. MINIMIZE IMPORTED FILL MATERIAL BY USING NATIVE CUT SLOPE SOILS FOR FILL MATERIAL.
13. MHHW ELEVATION IS EQUAL TO NAVD88 7.21 FT. FINISHED ELEVATIONS OF EVENT CENTER TRAIL SHALL BE ELEVATED ABOVE MHHW.

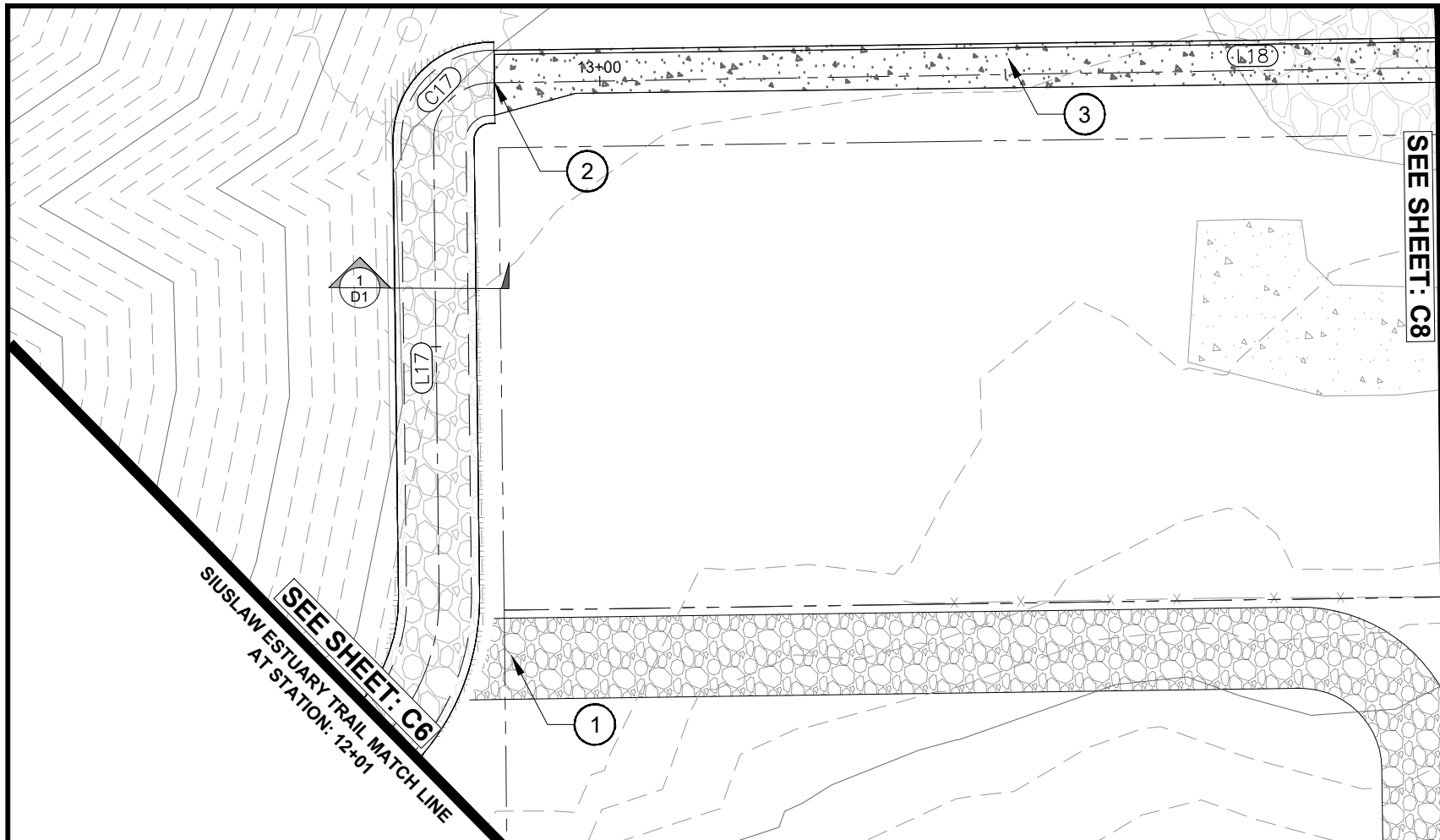
REV.	DATE	DESCRIPTION	BY

DESIGNED BY: JRP
DRAWN BY: JRP
CHECKED BY: SDL
PROJECT NO: 1503-022

CITY OF FLORENCE
LANE COUNTY
SIUSLAW ESTUARY TRAIL
STA 10+00 TO 12+00

C6
MARCH, 2023

DATE: 3/13/23 FILE: C:\CW_Projects\1503-022 Florence - Event Center Trail Improvements\04 Final Design\Drawings\DWG\Design Working\Spruce Street_Modify.dwg

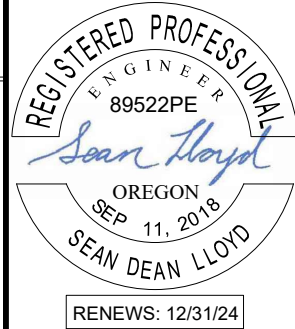


SEE SHEET: C8

SIUSLAW ESTUARY TRAIL MATCH LINE
AT STATION: 14+04

IMPROVEMENT NOTES:

- ① FUTURE FOOT BRIDGE AND ASSOCIATED PATHWAY. NOT INCLUDED IN PROJECT SCOPE
- ② STA 12+87 BEGIN TYP. SIDEWALK. TRANSITION TO 5' WIDTH. TRANSITION LENGTH IS 10'.
- ③ TYP. SIDEWALK SECTION W/ VERTICAL CURB. SEE SHEET D3



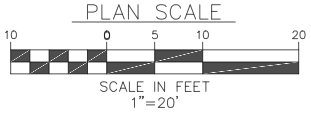
486 E. ST.
COOS BAY, OR 97420
541-266-8601
www.civilwest.com

NOTE:
FIELD ADJUSTMENTS TO ALIGNMENT AND PROFILE OF PATH WILL BE REQUIRED AND MUST BE COORDINATED WITH THE CITY OR THEIR REPRESENTATIVE(S). NO SEPARATE PAYMENT SHALL BE MADE.

LINE TABLE		
Line #	Direction	Length
L17	N89° 52' 01.98"W	56.119
L18	N00° 06' 56.56"W	188.185

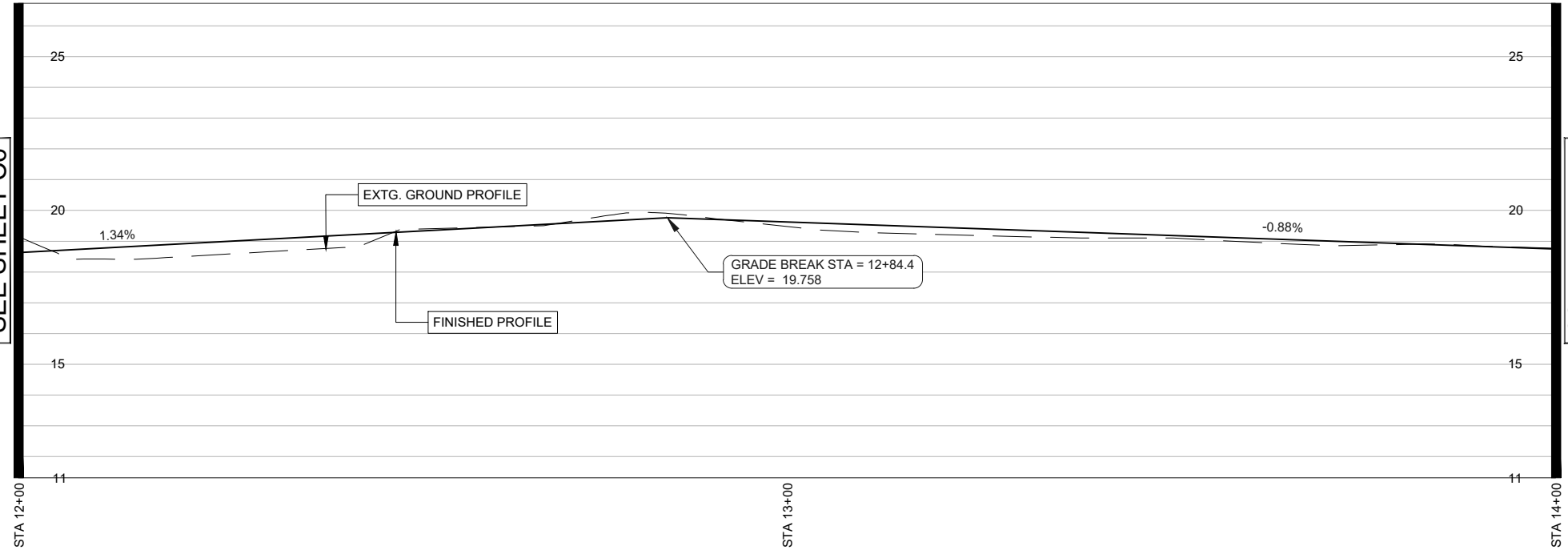
CURVE TABLE					
Curve #	Radius	Length	Chord Direction	Start Point	End Point
C17	7.000	10.981	N44° 55' 34.53"W	(3973938.62,861275.37)	(3973931.63,861282.37)

PLAN STA 12+00 TO 14+00



SHEET NOTES:

1. CONTRACTOR SHALL CONTACT "ONE CALL" FOR UTILITY LOCATES PRIOR TO THE START OF ANY EXCAVATION.
2. CLEARING HEIGHT SHALL BE 8' ALONG TRAIL ALIGNMENT
3. CONTRACTOR IS RESPONSIBLE FOR OBTAINING ALL PERMITTING REQUIRED BY THE CITY OF FLORENCE
4. CLEARING AND GRUBBING WORK SHALL BE PERFORMED IN STRICT COMPLIANCE WITH ALL CITY, COUNTY, STATE AND FEDERAL LAWS AND REQUIREMENTS PERTAINING TO CLEARING, DISPOSAL, EROSION CONTROL, AND OTHER RELATED OPERATIONS.
5. ALL DISTURBED AREAS SHALL BE RESTORED TO A CONDITION AT LEAST EQUIVALENT TO THE CONDITION PRIOR TO THE CONTRACTOR'S WORK.
6. TREES MUST BE REMOVED WITHOUT DAMAGING ANYTHING ELSE IN THE VICINITY. AFTER THE TREE IS REMOVED, THE STUMP AND ROOTS MUST BE GROUND SUFFICIENTLY AS APPROVED BY THE ENGINEER AND BACKFILLED WITH A SUITABLE BACKFILL AS APPROVED BY THE ENGINEER. ANY DAMAGE CAUSED BY THE REMOVAL OF THE TREE OR AS A PART OF THE TREE REMOVAL PROCESS WILL BE REPLACED, RESTORED OR FIXED AT THE CONTRACTOR'S EXPENSE
7. GRUBBING SHALL BE PERFORMED WITHIN ALL CLEARING AREA LIMITS, AS SPECIFIED ABOVE, TO A DEPTH OF SIX-INCHES (6") BELOW THE GROUND SURFACE, OR SUBGRADE, WHICHEVER IS DEEPER
8. PROTECT AND PRESERVE ALL VEGETATION OUTSIDE THE CUT/FILL SLOPES OF THE EVENT CENTER TRAIL.
9. NOTIFY CITY BEFORE REMOVAL OF ANY VEGETATION
10. ALL CONSTRUCTION ACTIVITY SHALL STAY REMOVED FROM WETLAND AND MUDFLAT DESIGNATED AREAS.
11. RESEED ALL CUT/FILL SLOPES WITH NATIVE SEED MIX.
12. MINIMIZE IMPORTED FILL MATERIAL BY USING NATIVE CUT SLOPE SOILS FOR FILL MATERIAL.
13. MHHW ELEVATION IS EQUAL TO NAVD88 7.21 FT. FINISHED ELEVATIONS OF EVENT CENTER TRAIL SHALL BE ELEVATED ABOVE MHHW.



PROFILE STA STA 12+00 TO 14+00

SCALE HORZ 1"=20'
VERT 1"=5'

REV.	DATE	DESCRIPTION	BY

DESIGNED BY: JRP
DRAWN BY: JRP
CHECKED BY: SDL
PROJECT NO: 1503-022

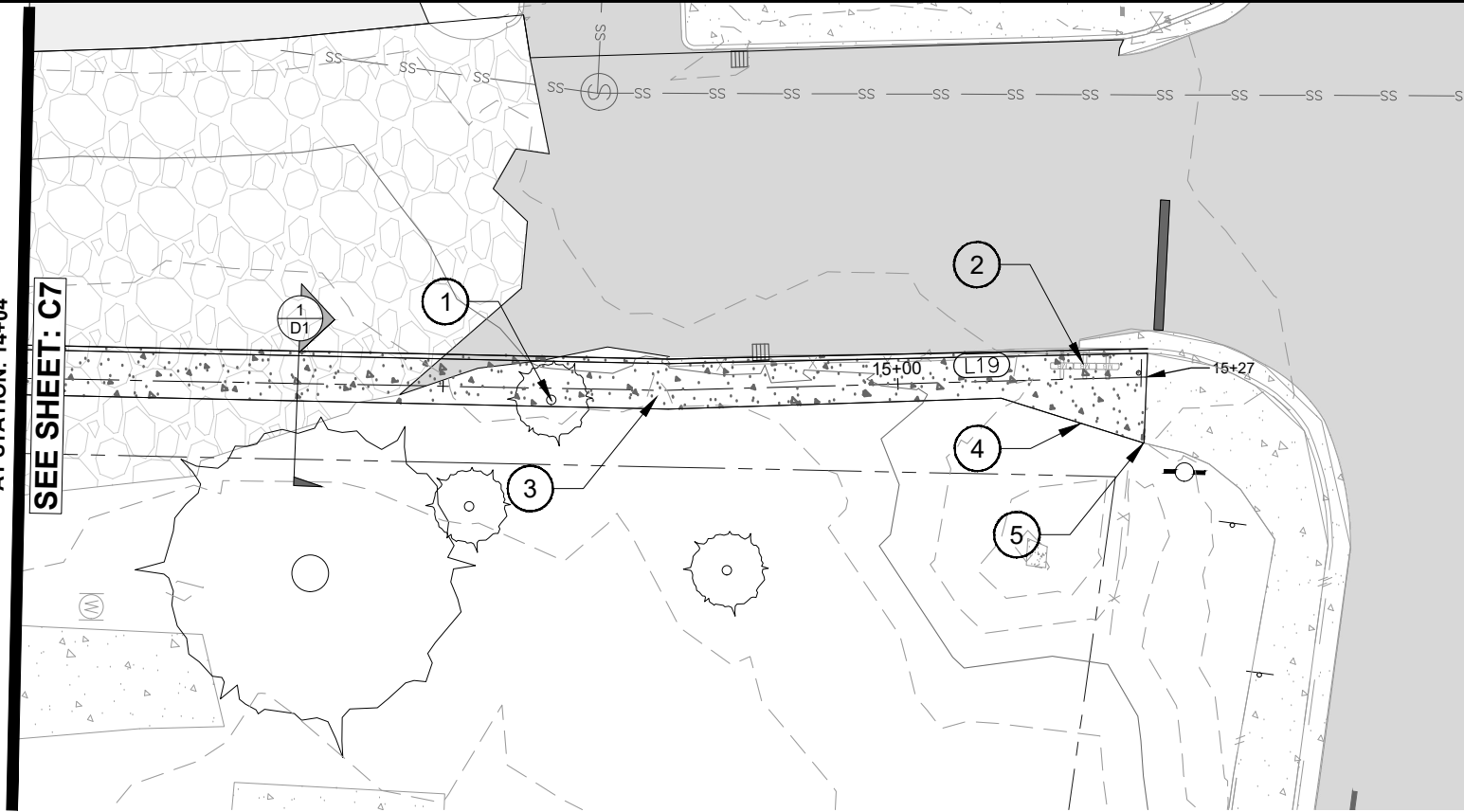
CITY OF FLORENCE
LANE COUNTY
SIUSLAW ESTUARY TRAIL
STA 12+00 TO 14+00

Sheet No. **C7**
Date **MARCH, 2023**

DATE: 3/13/23 FILE: C:\CW_Projects\1503-Florence\1503-022-Florence - Event Center Trail Improvements\04-Final Design\Drawings\DWG\Design-Workings-Spruce Street_Modify.dwg

SIUSLAW ESTUARY TRAIL MATCH LINE
AT STATION: 14+04

SEE SHEET: C7



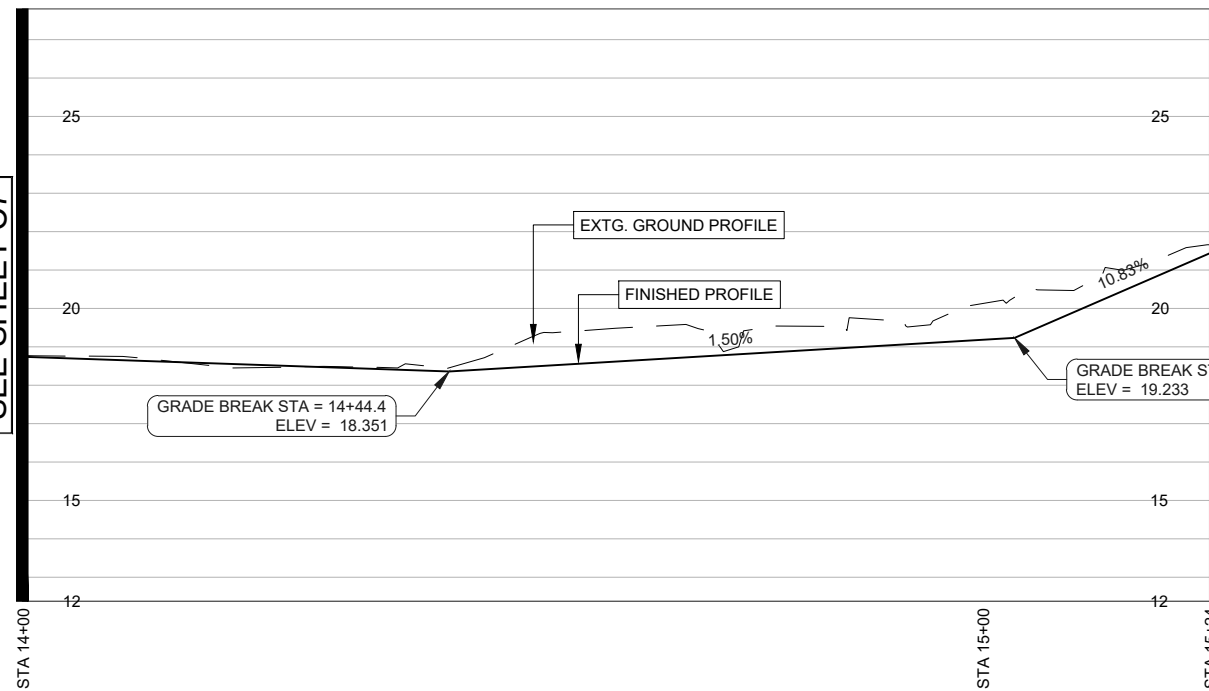
PLAN STA 14+00 TO 15+25

NOTE:
FIELD ADJUSTMENTS TO ALIGNMENT AND PROFILE OF PATH WILL BE REQUIRED AND MUST BE COORDINATED WITH THE CITY OR THEIR REPRESENTATIVE(S). NO SEPARATE PAYMENT SHALL BE MADE.

LINE TABLE		
Line #	Direction	Length
L19	N02° 48' 26.15"W	52.753

SIUSLAW ESTUARY TRAIL MATCHLINE
AT STATION: 14+00

SEE SHEET C7



PROFILE STA STA 14+00 TO 15+25

SCALE HORIZ 1"=20'
VERT 1"=5'

IMPROVEMENT NOTES:

- ① REMOVE EXTG. TREE
- ② MAILBOXES. PROTECT IN PLACE
- ③ TYP. SIDEWALK SECTION W/ VERTICAL CURB. SEE SHEET D3
- ④ TRANSITION SIDEWALK WIDTH TO MATCH EXT'G. 15' TRANSITION LENGTH.
- ⑤ CONNECT NEW SIDEWALK TO EXT'G

SHEET NOTES:

1. CONTRACTOR SHALL CONTACT "ONE CALL" FOR UTILITY LOCATES PRIOR TO THE START OF ANY EXCAVATION.
2. CLEARING HEIGHT SHALL BE 8' ALONG TRAIL ALIGNMENT
3. CONTRACTOR IS RESPONSIBLE FOR OBTAINING ALL PERMITTING REQUIRED BY THE CITY OF FLORENCE
4. CLEARING AND GRUBBING WORK SHALL BE PERFORMED IN STRICT COMPLIANCE WITH ALL CITY, COUNTY, STATE AND FEDERAL LAWS AND REQUIREMENTS PERTAINING TO CLEARING, DISPOSAL, EROSION CONTROL, AND OTHER RELATED OPERATIONS.
5. ALL DISTURBED AREAS SHALL BE RESTORED TO A CONDITION AT LEAST EQUIVALENT TO THE CONDITION PRIOR TO THE CONTRACTOR'S WORK.
6. TREES MUST BE REMOVED WITHOUT DAMAGING ANYTHING ELSE IN THE VICINITY. AFTER THE TREE IS REMOVED, THE STUMP AND ROOTS MUST BE GROUND SUFFICIENTLY AS APPROVED BY THE ENGINEER AND BACKFILLED WITH A SUITABLE BACKFILL AS APPROVED BY THE ENGINEER. ANY DAMAGE CAUSED BY THE REMOVAL OF THE TREE OR AS A PART OF THE TREE REMOVAL PROCESS WILL BE REPLACED, RESTORED OR FIXED AT THE CONTRACTOR'S EXPENSE
7. GRUBBING SHALL BE PERFORMED WITHIN ALL CLEARING AREA LIMITS, AS SPECIFIED ABOVE, TO A DEPTH OF SIX-INCHES (6") BELOW THE GROUND SURFACE, OR SUBGRADE, WHICHEVER IS DEEPER
8. PROTECT AND PRESERVE ALL VEGETATION OUTSIDE THE CUT/FILL SLOPES OF THE EVENT CENTER TRAIL.
9. NOTIFY CITY BEFORE REMOVAL OF ANY VEGETATION
10. MHHW ELEVATION IS EQUAL TO NAVD88 7.21 FT. FINISHED ELEVATIONS OF EVENT CENTER TRAIL SHALL BE ELEVATED ABOVE MHHW.



Civil West
Engineering Services, Inc.

486 E. ST.
COOS BAY, OR 97420

541-266-8601
www.civilwest.com

REV.	DATE	DESCRIPTION	BY

DESIGNED BY: JRP
DRAWN BY: JRP
CHECKED BY: SDL
PROJECT NO: 1503-022

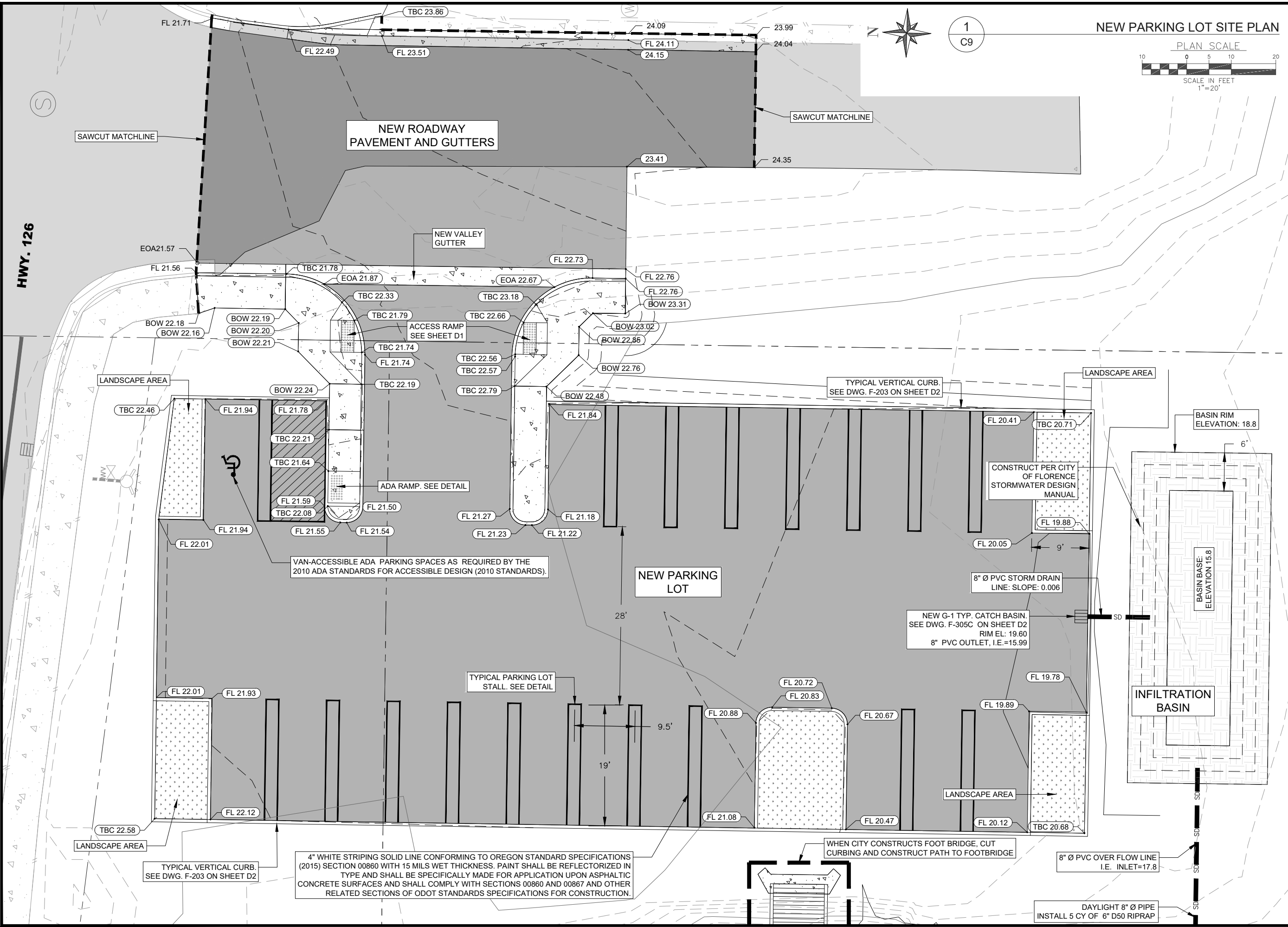
CITY OF FLORENCE
LANE COUNTY

SIUSLAW ESTUARY TRAIL

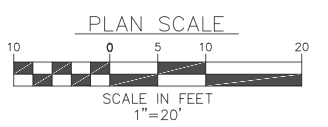
STA 14+00 TO 15+25

Sheet No. **C8**
Date **MARCH, 2023**

DATE: 3/13/23 FILE: C:\CW_Projects\1503-Florence\1503-022-Florence - Event Center Trail Improvements\04-Final Design\Drawings\DWG\Design-Workings\Spruce Street.Modify.dwg



NEW PARKING LOT SITE PLAN



1
C9

REGISTERED PROFESSIONAL
ENGINEER
89522PE
Sean Lloyd
OREGON
SEP 11, 2018
SEAN DEAN LLOYD
RENEWS: 12/31/24

Civil West
Engineering Services, Inc.
486 E. ST.
COOS BAY, OR 97420
541-266-8601
www.civilwest.com

REV.	DATE	DESCRIPTION	BY

DESIGNED BY: JRP	DRAWN BY: JRP	CHECKED BY: SDL
PROJECT NO: 1503-022		

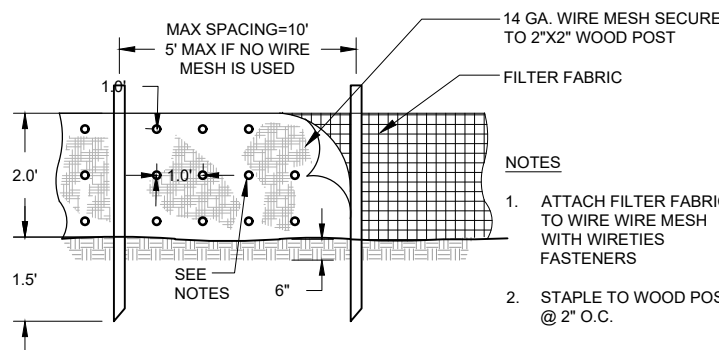
CITY OF FLORENCE
LANE COUNTY
SIUSLAW ESTUARY TRAIL
PARKING LOT IMPROVEMENT AND
DEMOLITION PLAN
Date: Sheet No. **C9**
MARCH, 2023

GENERAL NOTES: EROSION CONTROL

1. EROSION CONTROL FACILITIES AS SHOWN ARE OF MINIMUM REQUIREMENT AND SHOWN FOR CLARITY ONLY. CONTRACTOR IS RESPONSIBLE FOR THE IMPLEMENTATION, CONSTRUCTION AND MAINTENANCE OF THIS OR ANY ADDITIONAL EROSION CONTROL AS MAY BE REQUIRED THROUGHOUT THE COURSE OF THE PROJECT.
2. CONTRACTOR SHALL BE RESPONSIBLE FOR CLEANING DRAINAGE AND EROSION CONTROL FACILITIES AS REQUIRED DURING THE COURSE OF THE PROJECT.
3. EROSION CONTROL STRUCTURES BELOW SODDEN AREAS MAY BE REMOVED ONCE SOD AND FINAL LANDSCAPING IS IN PLACE. EROSION CONTROL STRUCTURES BELOW SEEDED AREAS MUST REMAIN IN PLACE UNTIL THE ENTIRE AREA HAS ESTABLISHED A MATURE COVERING OF HEALTHY VEGETATION.
4. INLET PROTECTION DEVICES SHALL BE INSTALLED IMMEDIATELY UPON INDIVIDUAL INLETS BECOMING FUNCTIONAL FOR NEW AND PRIOR TO START OF CONSTRUCTION ON EXISTING INLETS.
5. MAINTAIN ON THE SITE OR HAVE READILY AVAILABLE SUFFICIENT OIL AND GREASE ABSORBING MATERIALS TO CONTAIN AND CLEANUP FUEL OR CHEMICAL SPILLS AND LEAKS.
6. FUGITIVE DUST BLOWING FROM THE SITE SHALL BE CONTROLLED BY SPRAYING WATER AND DUST CONTROL POLYMERS, AS NEEDED, ON DRY AREAS OF THE SITE. THE USE OF MOTOR OILS AND OTHER PETROLEUM BASED OR TOXIC LIQUIDS FOR DUST SUPPRESSION OPERATIONS IS ABSOLUTELY PROHIBITED.
7. NO RUBBISH, TRASH, GARBAGE OR OTHER SUCH MATERIALS SHALL BE DISCHARGED INTO DRAINAGE DITCHES OR WATERS OF THE STATE.
8. IF SOIL STOCKPILING IS EMPLOYED ON THE SITE, FILTER FENCES SHALL BE USED TO HELP CONTAIN THE SEDIMENT TO THE STOCKPILE AREA.
9. ALL TEMPORARY EROSION AND SEDIMENT CONTROL MEASURES SHALL BE DISPOSED OF WITHIN 30 DAYS AFTER FINAL STABILIZATION. FINAL STABILIZATION HAS OCCURRED WHEN ALL SOIL DISTURBING ACTIVITIES ARE COMPLETED AND A UNIFORM PERENNIAL VEGETATIVE COVER WITH A DENSITY OF 70% OF THE COVER FOR UNPAVED AREAS AND AREAS NOT COVERED BY PERMANENT STRUCTURES HAS BEEN EMPLOYED.
10. CONTRACTOR SHALL BE RESPONSIBLE FOR ADJUSTING THE EROSION CONTROL MEASURES (SILT FENCES, STRAW BALES, ETC.) DUE TO GRADE CHANGES DURING THE DEVELOPMENT OF THE PROJECT.
11. ALL EROSION CONTROL MEASURES SHALL BE MAINTAINED IN FULLY FUNCTIONAL CONDITION UNTIL FINAL STABILIZATION OF THE SITE. ALL EROSION AND SEDIMENTATION CONTROL MEASURES SHALL BE CHECKED BY A QUALIFIED PERSON AT LEAST ONCE EVERY SEVEN CALENDAR DAYS AND WITHIN 24 HOURS OF THE END OF A RAINFALL EVENT, AND SHOULD BE CLEANED AND REPAIRED IN ACCORDANCE WITH THE FOLLOWING.
 - A. INLET PROTECTION DEVICES AND BARRIERS SHALL BE FIXED OR REPLACED IF THEY SHOW SIGNS OF CLOGGING.
 - B. ALL SEEDED AREAS SHALL BE CHECKED REGULARLY TO SEE THAT A GOOD STAND IS MAINTAINED. AREAS SHOULD BE FERTILIZED, RESEEDED, AND WATERED AS NEEDED.
 - C. FILTER FENCES SHALL BE REPAIRED TO THEIR ORIGINAL CONDITIONS IF DAMAGED. SEDIMENT SHALL BE REMOVED FROM THE SILT FENCES WHEN IT REACHES ONE-THIRD TO ONE-HALF THE HEIGHT OF THE SILT FENCE.
 - D. ANY TEMPORARY PARKING AND STORAGE AREAS SHALL BE KEPT IN GOOD CONDITION (SUITABLE FOR PARKING AND STORAGE). THIS MAY REQUIRE TOP DRESSING OF THE TEMPORARY PARKING AREAS AS CONDITIONS DEMAND.
 - E. OUTLET STRUCTURES IN THE SEDIMENTATION BASINS SHALL BE MAINTAINED IN OPERATIONAL CONDITIONS AT ALL TIMES. SEDIMENT IN THE SEDIMENTATION BASINS SHALL NOT EXCEED THE SEDIMENTATION CLEANOUT LEVEL.

EROSION + SEDIMENT CONTROL NOTES

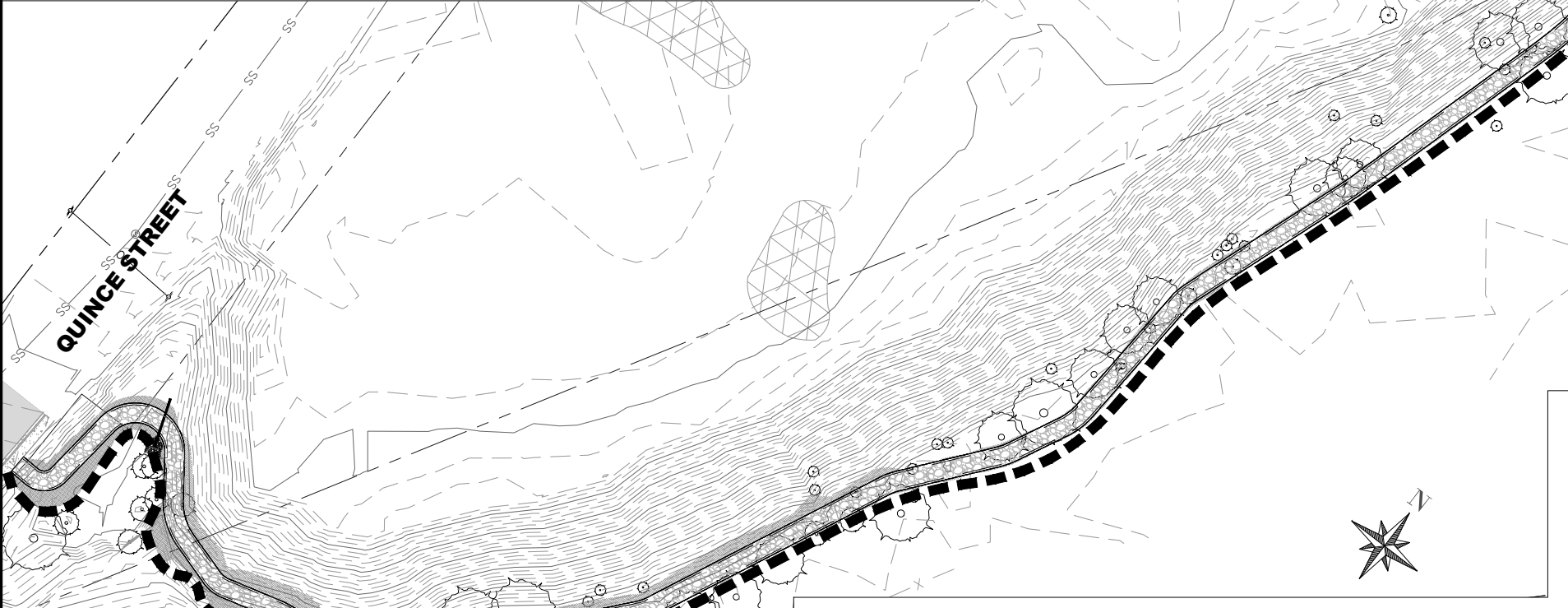
1. PLACE SWALE TYPE SEDIMENT BARRIERS ON GENTLY SLOPING BANK SEGMENTS. WHERE WATER CAN POND AND ALLOW SEDIMENT TO SEPARATE FROM RUNOFF.
2. SANDBAGS OF EITHER BURLAP OR WOVEN "GEOTEXTILE" FABRIC, ARE FILLED WITH GRAVEL LAYERS PACKED TIGHTLY.
3. LEAVE A ONE SANDBAG GAP IN THE TOP ROW TO PROVIDE A SPILLWAY FOR THE OVERFLOW.
4. INSPECT BARRIERS AND REMOVE SEDIMENT AFTER EACH STORM EVENT. SEDIMENT AND GRAVEL MUST BE REMOVED FORM THE TRAVELED WAY IMMEDIATELY.
5. SEDIMENT BARRIERS TO REMAIN IN PLACE AND MAINTAINED BY CONTRACTOR UNTIL ALL DISTURBED SOILS HAVE BEEN STABILIZED.
6. REFER TO LANDSCAPE PLANS FOR FINAL VEGETATIVE COVER.



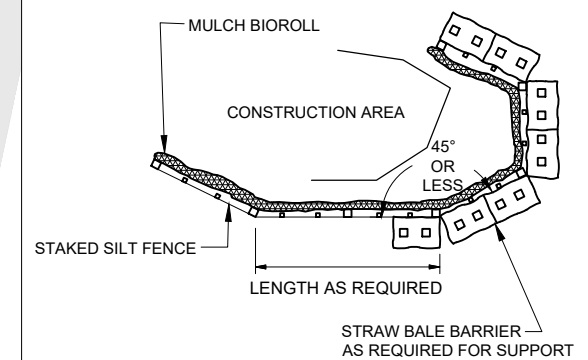
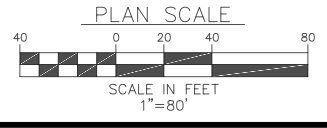
1 STAKED SILT FENCE DETAIL (ELEVATION)
C10 N.T.S.

LEGEND:

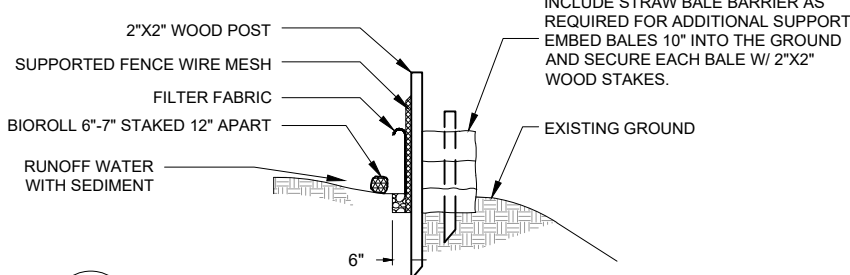
SILT FENCE



1 EROSION CONTROL PLAN VIEW
C10



2 STAKED SILT FENCE DETAIL (PLAN)
C10 N.T.S.



3 STAKED SILT FENCE DETAIL (SECTION)
C10 N.T.S.

REGISTERED PROFESSIONAL ENGINEER
89522PE
Sean Lloyd
OREGON
SEP 11, 2018
SEAN DEAN LLOYD
RENEWS: 12/31/24

Civil West
Engineering Services, Inc.
486 E. ST.
COOS BAY, OR 97420
541-266-8601
www.civilwest.com

REV.	DATE	DESCRIPTION	BY

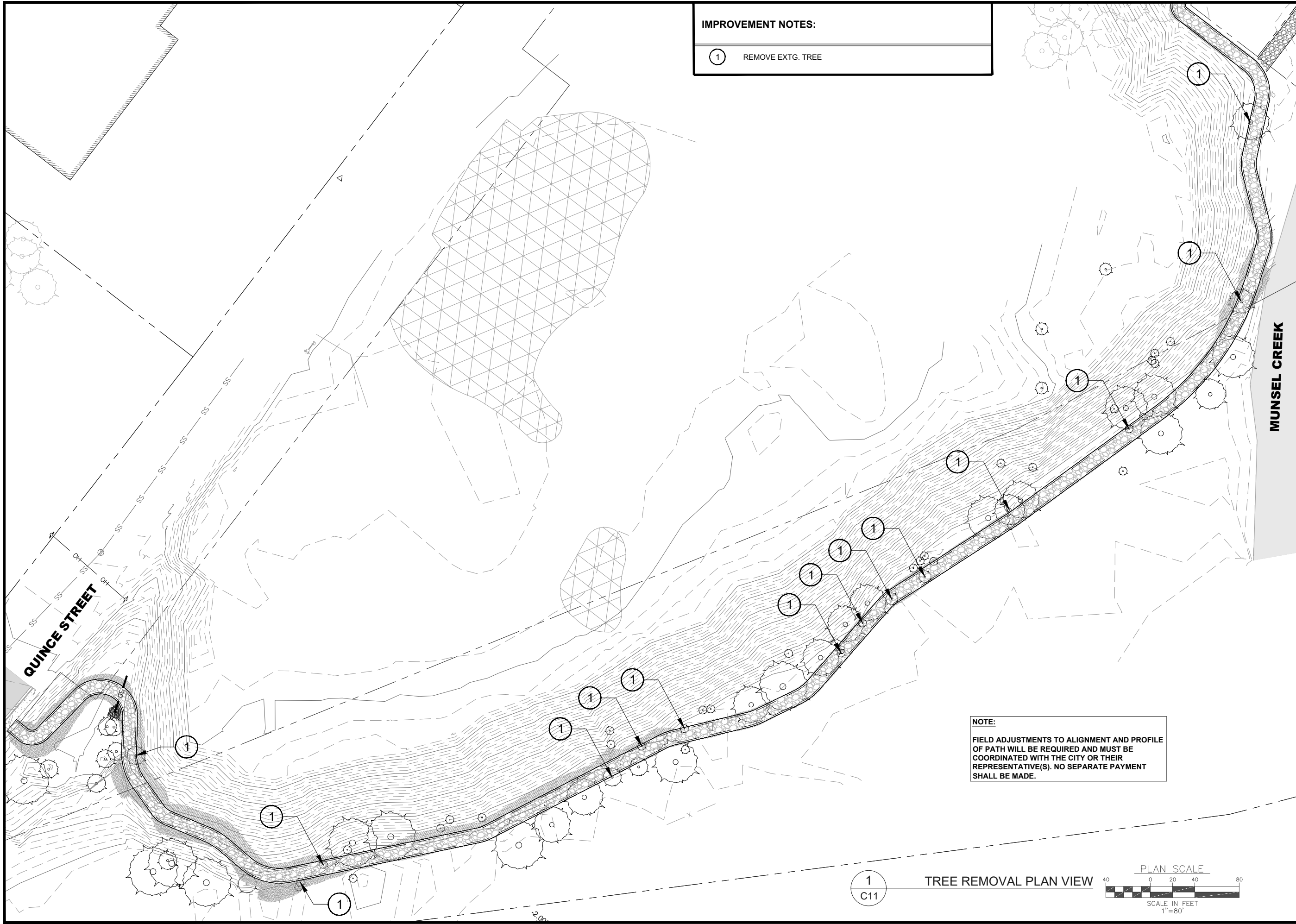
DESIGNED BY: JRP
DRAWN BY: JRP
CHECKED BY: SDL
PROJECT NO: 1503-022

CITY OF FLORENCE
LANE COUNTY
SIUSLAW ESTUARY TRAIL
EROSION CONTROL PLAN

Sheet No. **C10**
Date **MARCH, 2023**

DATE: 3/13/23 FILE: C:\CW_Projects\1503-022_Florence - Event Center Trail Improvements\04_Final Design\Drawings\Design Working\Spurce Street_Modify.dwg

DATE: 3/13/23 FILE: C:\CW_Projects\1503-022 Florence\1503-022 Florence - Event Center Trail Improvements\04 Final Design\Drawings\Design Working\Spruce Street.Modify.dwg



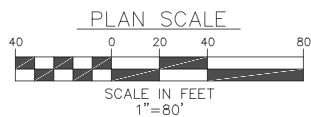
IMPROVEMENT NOTES:

①	REMOVE EXTG. TREE
---	-------------------

NOTE:
FIELD ADJUSTMENTS TO ALIGNMENT AND PROFILE OF PATH WILL BE REQUIRED AND MUST BE COORDINATED WITH THE CITY OR THEIR REPRESENTATIVE(S). NO SEPARATE PAYMENT SHALL BE MADE.

①
C11

TREE REMOVAL PLAN VIEW



REGISTERED PROFESSIONAL
ENGINEER
89522PE
Sean Lloyd
OREGON
SEP 11, 2018
SEAN DEAN LLOYD
RENEWS: 12/31/24

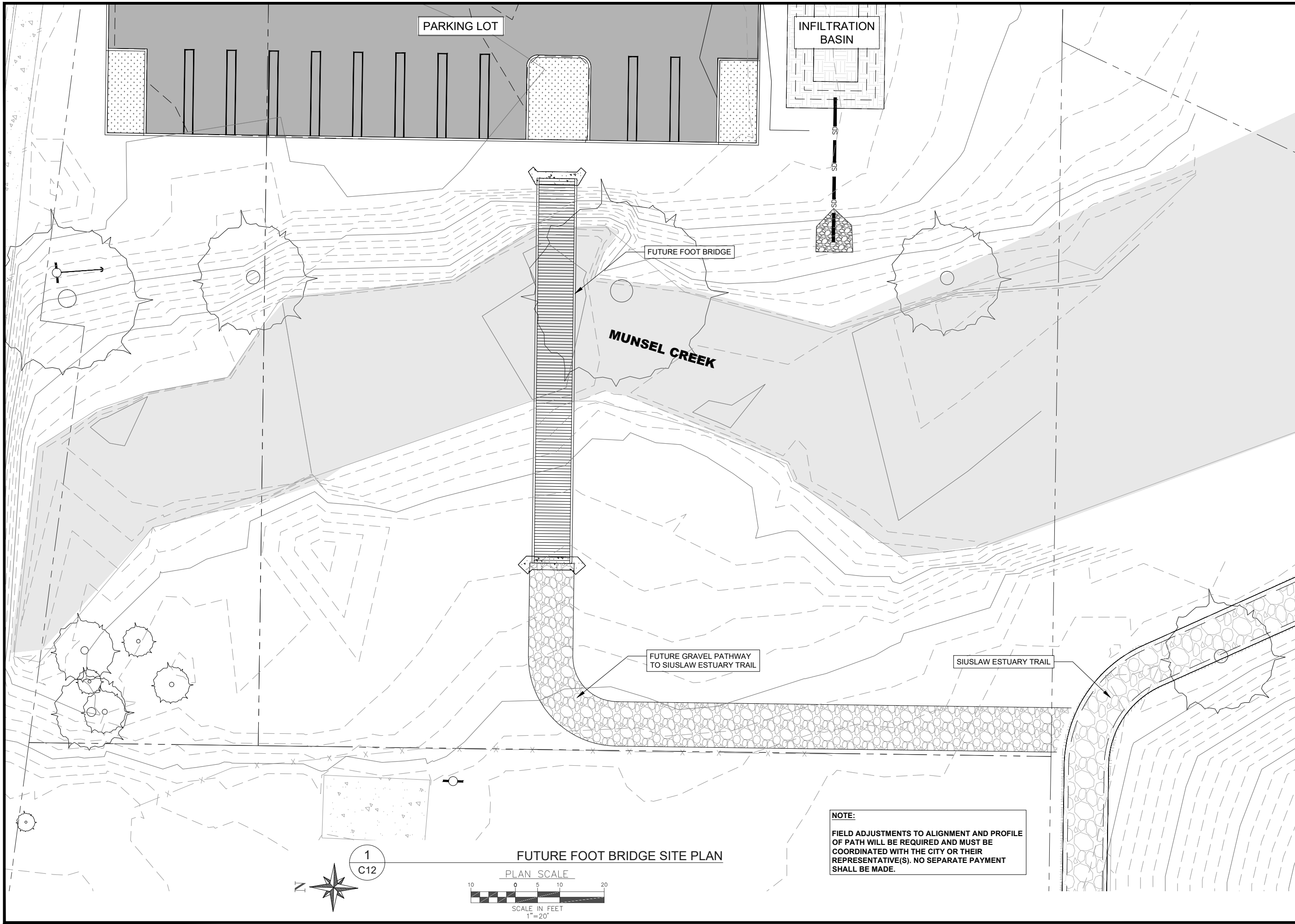
Civil West
Engineering Services, Inc.
486 E ST.
COOS BAY, OR 97420
541-266-8601
www.civilwest.com

REV.	DATE	DESCRIPTION	BY

DESIGNED BY: JRP	DRAWN BY: JRP	CHECKED BY: SDL
PROJECT NO: 1503-022		

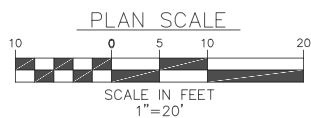
CITY OF FLORENCE LANE COUNTY	SIUSLAW ESTUARY TRAIL	TREE REMOVAL PLAN
Date: Sheet No: C11	MARCH, 2023	

DATE: 3/13/23 FILE: C:\CW_Projects\1503-022 Florence - Event Center Trail Improvements\04 Final Design\Drawings\DWG\Design Working-Spruce Street.Modify.dwg



1
C12

FUTURE FOOT BRIDGE SITE PLAN



NOTE:
FIELD ADJUSTMENTS TO ALIGNMENT AND PROFILE OF PATH WILL BE REQUIRED AND MUST BE COORDINATED WITH THE CITY OR THEIR REPRESENTATIVE(S). NO SEPARATE PAYMENT SHALL BE MADE.

REGISTERED PROFESSIONAL
ENGINEER
89522PE
Sean Lloyd
OREGON
SEP 11, 2018
SEAN DEAN LLOYD
RENEWS: 12/31/24

Civil West
Engineering Services, Inc.
486 E. ST.
COOS BAY, OR 97420
541-266-8601
www.civilwest.com

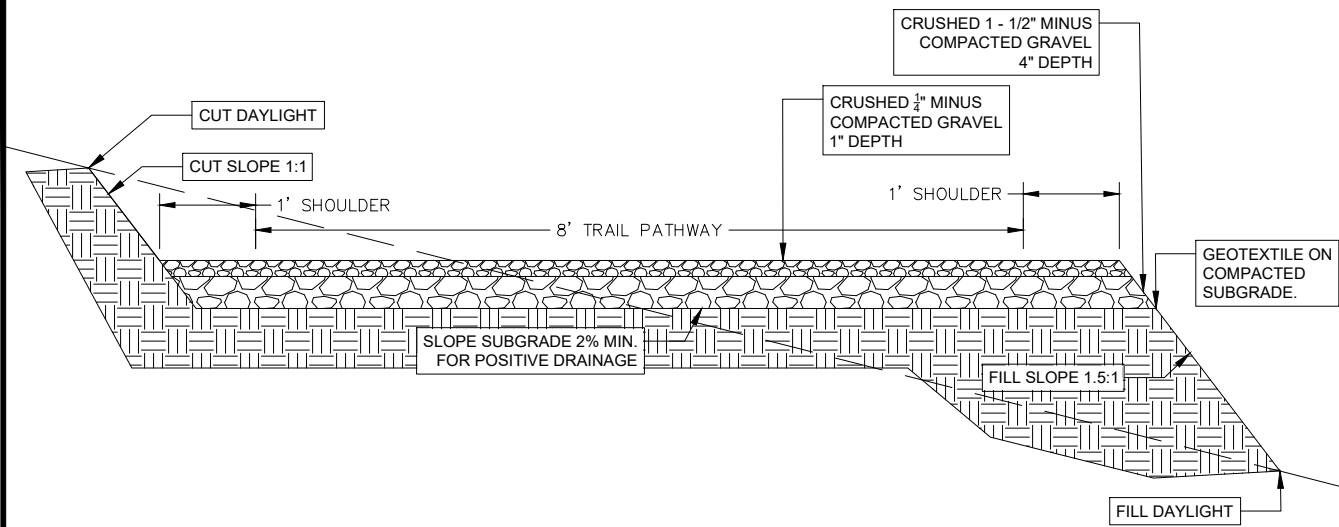
REV.	DATE	DESCRIPTION	BY

DESIGNED BY: JRP
DRAWN BY: JRP
CHECKED BY: SDL
PROJECT NO: 1503-022

CITY OF FLORENCE
LANE COUNTY
SIUSLAW ESTUARY TRAIL
FUTURE FOOT BRIDGE LOCATION

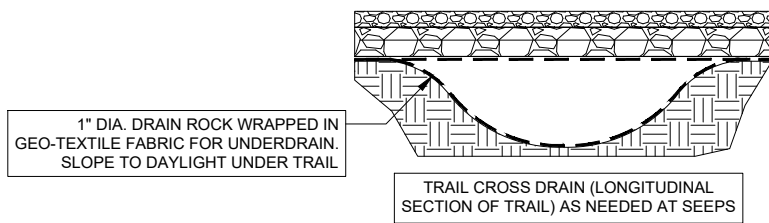
Sheet No. **C12**
Date **MARCH, 2023**

DATE: 3/13/23 FILE: C:\CW_Projects\1503-022 Florence - Event Center Trail Improvements\04_Final Design\Drawings\Design Working\Spruce Street_Modify.dwg

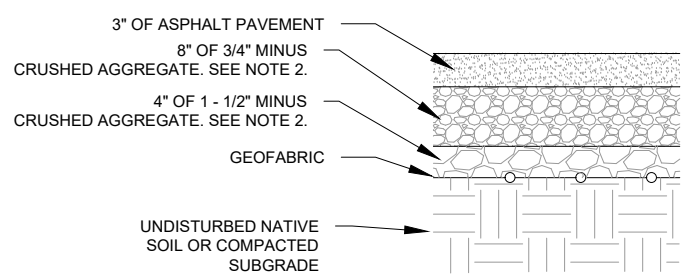


NOTES:

- 1 EXCESS CUT TO BE DISTRIBUTED TO SIDES OF TRAIL IF NOT NEEDED FOR FILL TO REVEGETATE NATURALLY, RE-SEED AS NEEDED
- 2 WET AREAS TO DRAIN UNDER GEOTEXTILE IN 6" X 2" TRENCH OF ROUND ROCK ENCLOSED IN FILTER
- 3 PEA GRAVEL IS NOT AN ACCEPTABLE SUBSTITUTE. ITS ROUND SHAPE ROLLS AND WILL NOT COMPACT.



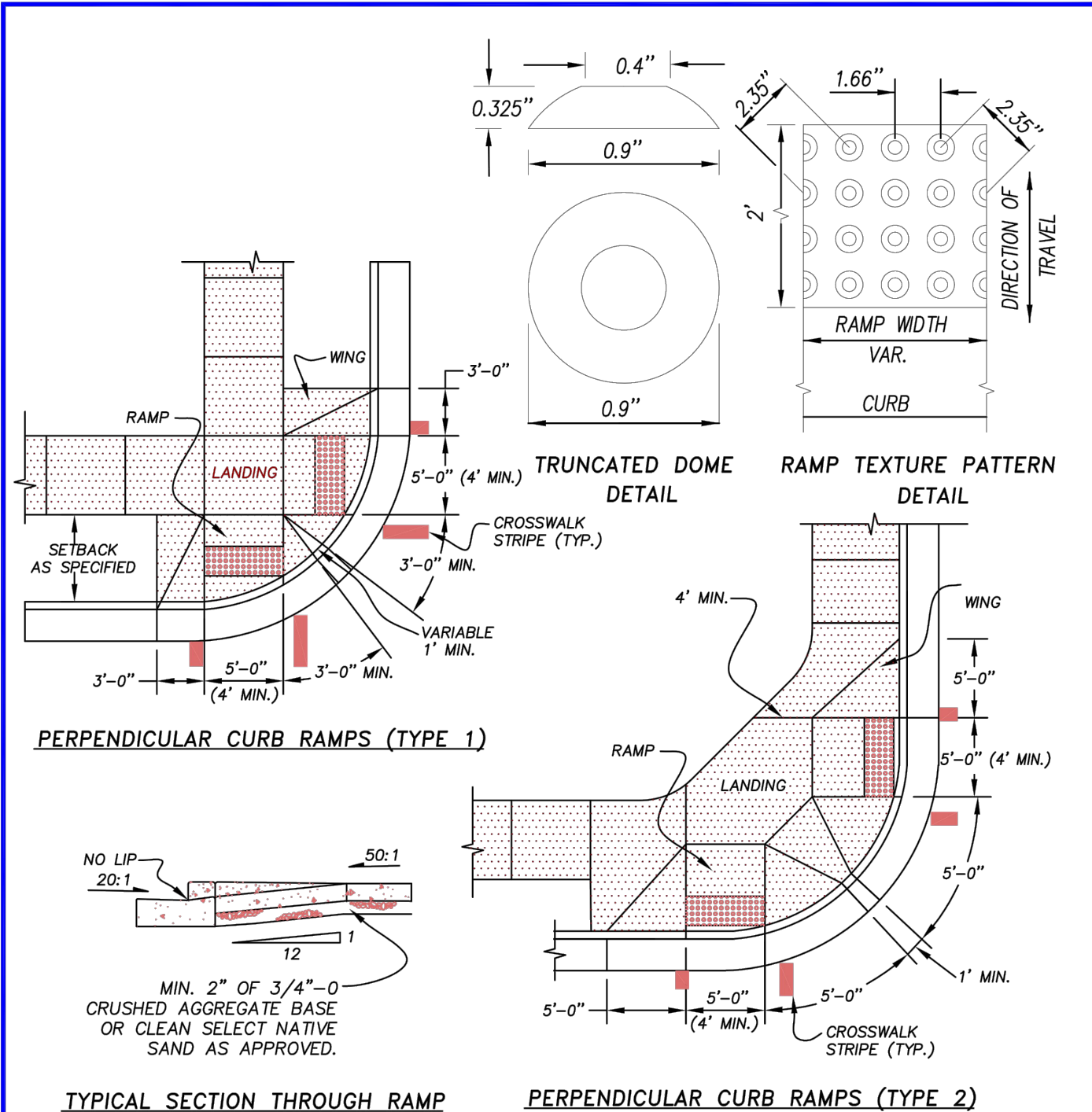
1
D1 TRAIL PATHWAY TYPICAL CROSS SECTION



NOTES:

1. CONTRACTOR TO PROVIDE SMOOTH TRANSITION FROM NEW AC PAVEMENT TO EXISTING PAVEMENT AND ADJACENT GRAVEL SURFACE.
2. SALVAGE EXISTING AGGREGATE BASE LAYER FROM EXISTING AC PAVEMENT AND INSTALL ADDITIONAL AGGREGATE AS NECESSARY TO COMPLETE SPECIFIED DEPTHS.

2
D1 AC TYPICAL CROSS SECTION



PERPENDICULAR CURB RAMPS (TYPE 1)

PERPENDICULAR CURB RAMPS (TYPE 2)

NOTES:

1. THE "AMERICANS WITH DISABILITIES ACT" (ADA) REQUIRES THAT ACCESS RAMPS TO SIDEWALKS CONFORM TO ALL FEDERAL GUIDELINES. EXCEPTIONS TO THE REQUIREMENTS IN THIS DRAWING MUST BE APPROVED BY THE ENGINEER AND MUST COMPLY WITH A.D.A.
2. NO ABOVE GROUND UTILITIES ARE PERMITTED WITHIN RAMP AREA.
3. LANDINGS SHALL BE PLACED AT THE TOPS OF RAMPS. LANDING SLOPE SHALL NOT EXCEED 50:1 IN ANY DIRECTION. THE SLOPE OF THE SURFACING AT THE BOTTOM OF THE RAMPS SHALL NOT EXCEED 20:1 FOR A DISTANCE OF 2' (SEE TYPICAL SECTION ABOVE).
4. MINIMUM LANDING DIMENSIONS SHALL BE 4' X 4'.
5. RAMP SURFACE SHALL BE TEXTURED WITH RAISED TRUNCATED DOME TEXTURE. TEXTURING SHALL BE DONE WITH AN EXPANDED METAL GRATE STAMPED INTO THE CONCRETE OR O.D.O.T. YELLOW PLASTIC TRUNCATED DOME.
6. CONCRETE STRENGTH SHALL BE 3300 PSI MIN.

**CITY OF FLORENCE
STANDARD DRAWING**

**SIDEWALK
ACCESS RAMP**

DATE: MARCH 2007 DRAWING NO: F-206

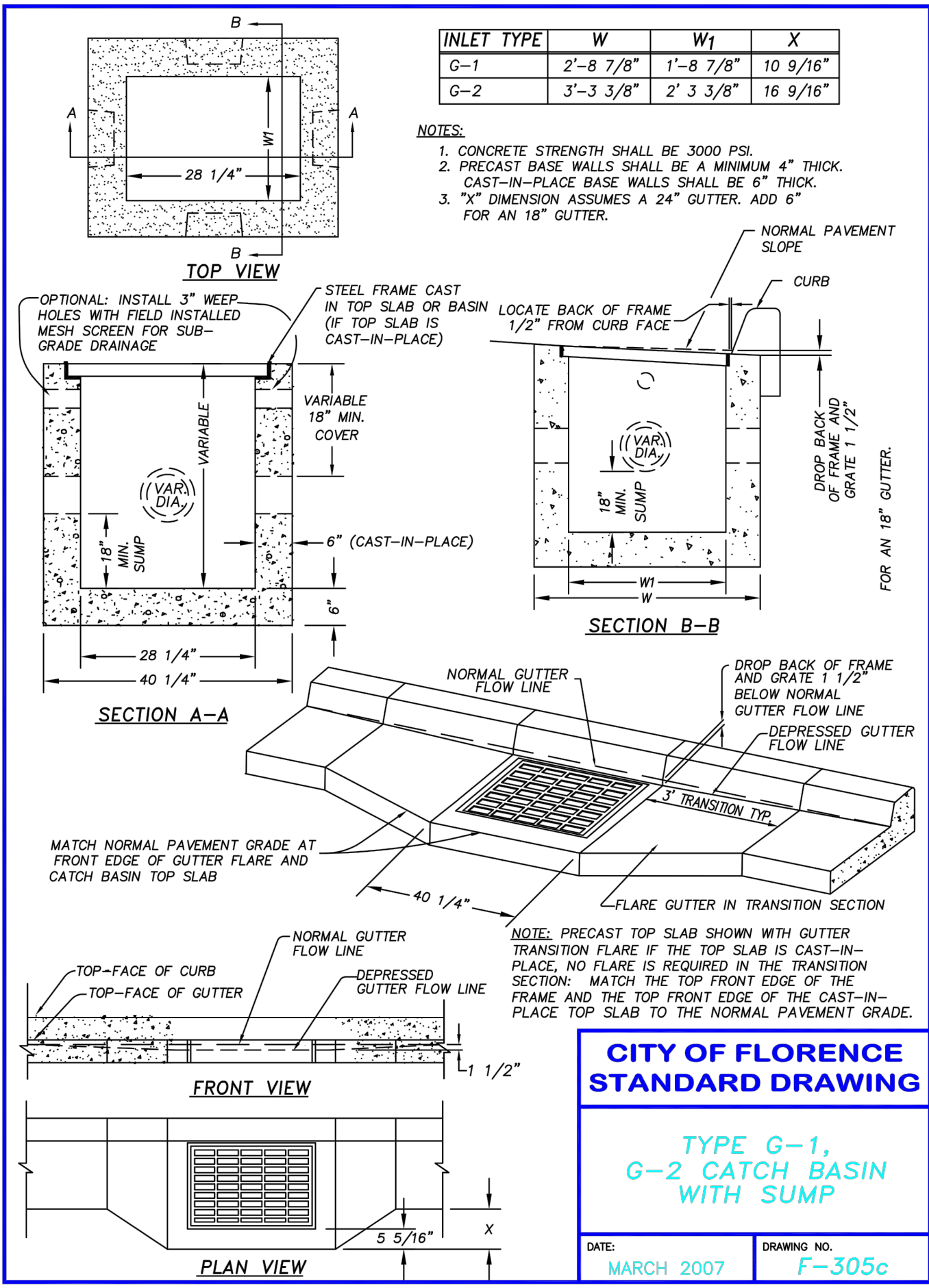


REV.	DATE	DESCRIPTION	BY

DESIGNED BY: JRP	CHECKED BY: SDL
DRAWN BY: JRP	PROJECT NO: 1503-022

CITY OF FLORENCE LANE COUNTY	SIUSLAW ESTUARY TRAIL	TRAIL CROSS SECTION AND DRIVEWAY DETAIL
Sheet No: D1	MARCH, 2023	

DATE: 3/19/23 FILE: C:\CW_Projects\1503-Florence\1503-022-Florence - Event Center Trail Improvements\04-Final Design\Drawings\DWG\Design-Workings\Spurce Street.Modify.dwg

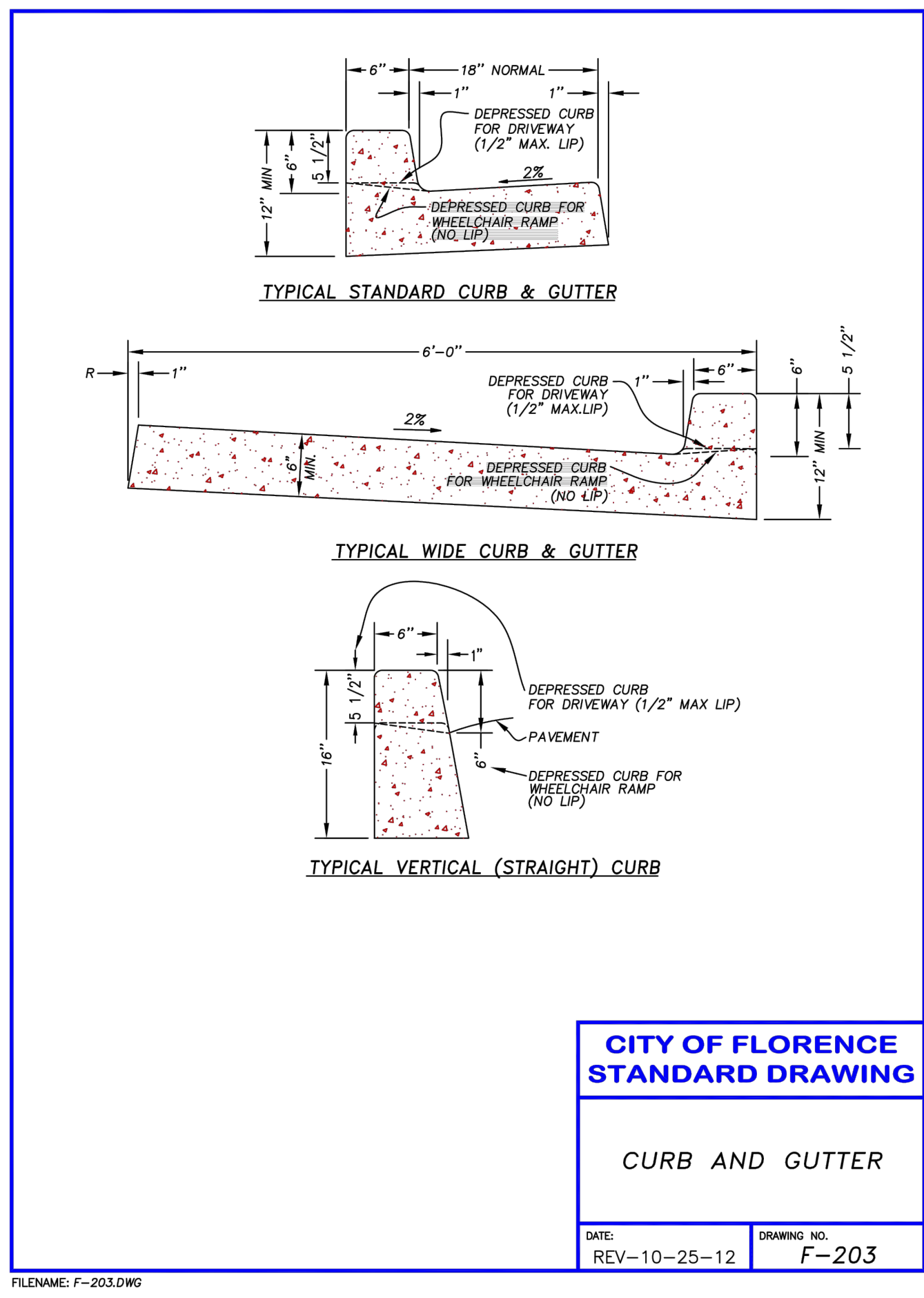


**CITY OF FLORENCE
STANDARD DRAWING**

**TYPE G-1,
G-2 CATCH BASIN
WITH SUMP**

DATE: **MARCH 2007** DRAWING NO. **F-305c**

FILENAME: F-305c.DWG



**CITY OF FLORENCE
STANDARD DRAWING**

CURB AND GUTTER

DATE: **REV-10-25-12** DRAWING NO. **F-203**

FILENAME: F-203.DWG

REGISTERED PROFESSIONAL
ENGINEER
89522PE
Sean Lloyd
OREGON
SEP 11, 2018
SEAN DEAN LLOYD
RENEWS: 12/31/24

Civil West
Engineering Services, Inc.
486 E. ST.
COOS BAY, OR 97420
541-266-8601
www.civilwest.com

REV.	DATE	DESCRIPTION	BY

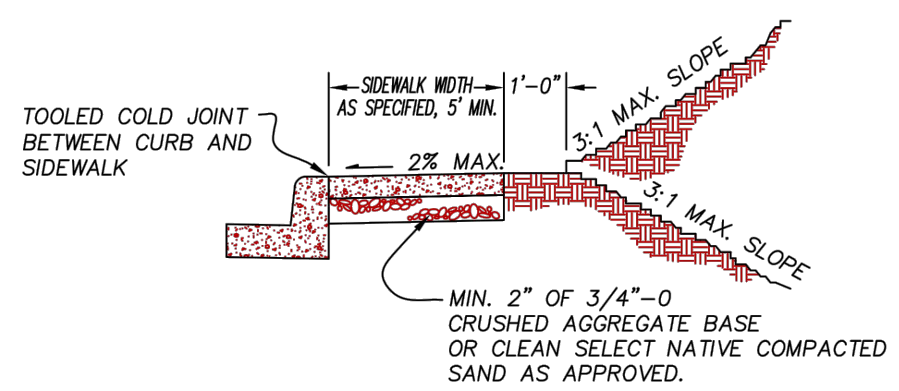
DESIGNED BY: JRP	DRAWN BY: JRP	CHECKED BY: SDL
PROJECT NO: 1503-022		

CITY OF FLORENCE
LANE COUNTY
SIUSLAW ESTUARY TRAIL
CATCH BASIN AND CURB DETAILS
D2
MARCH, 2023

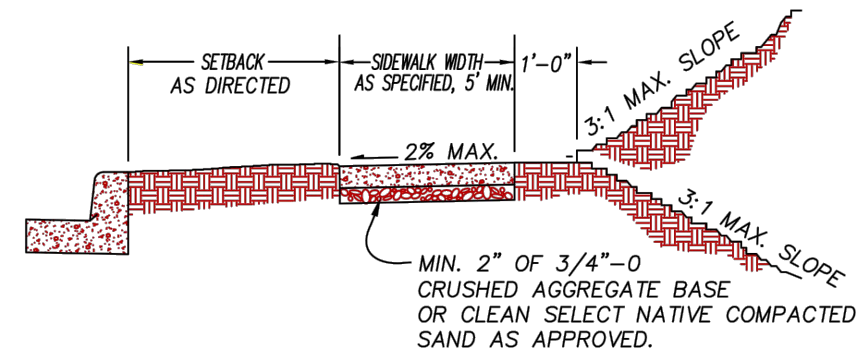


BY		DESIGNER		CHECKED BY:	SDL
REV.	DATE	DESCRIPTION		DRAWN BY:	JRP
				DESIGNED BY:	JRP
				PROJECT NO.:	1503-022

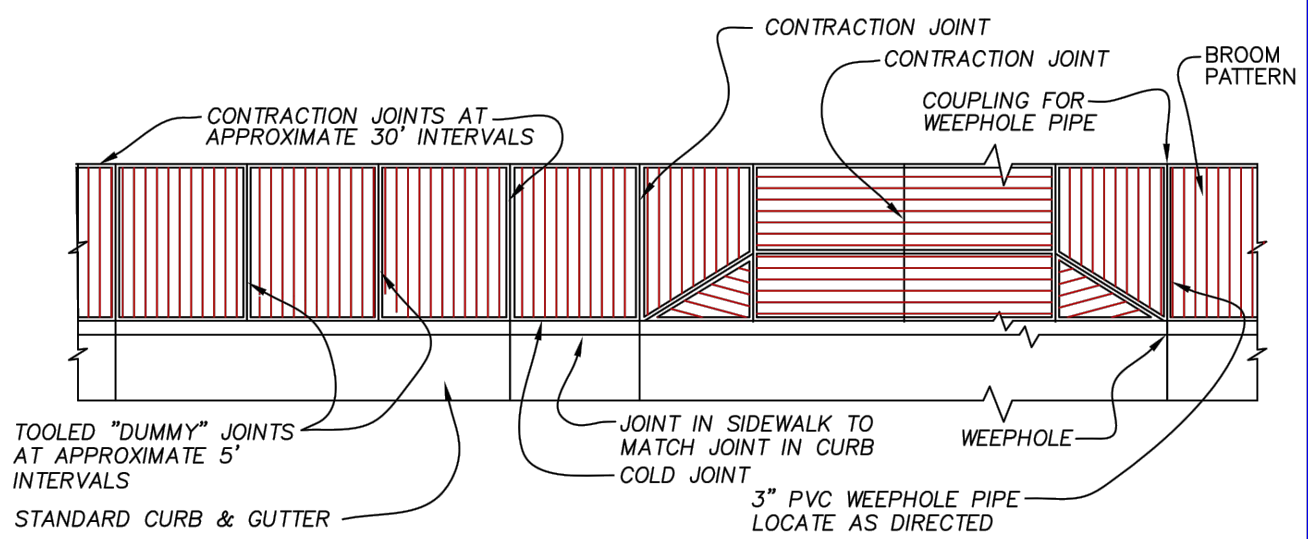
CITY OF FLORENCE LANE COUNTY	SIUSLAW ESTUARY TRAIL	SIDEWALK DETAILS
CITY OF FLORENCE STANDARD DRAWING SIDEWALK DETAILS: OBSTRUCTIONS AND PROTRUDING OBJECTS		
DATE: REV-10-25-12	DRAWING NO. F-205	
DATE: REV-10-25-12	DRAWING NO. F-205a	
D3 MARCH, 2023		



TYPICAL CURBSIDE CROSS SECTION



TYPICAL SETBACK CROSS SECTION



TYPICAL PLAN VIEW

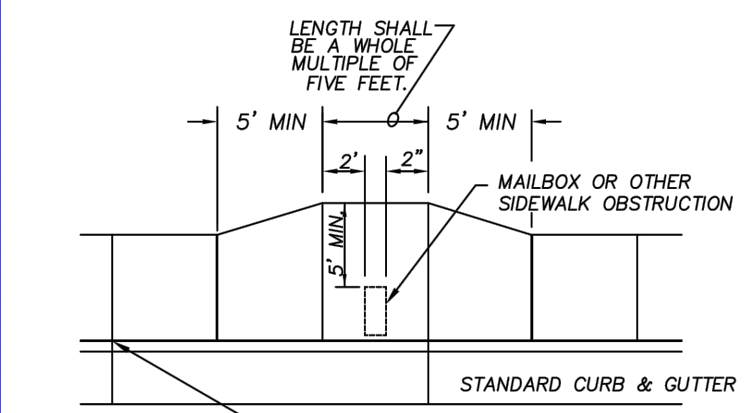
- NOTE:**
- SIDEWALKS 8 FEET AND WIDER SHALL HAVE A LONGITUDINAL CONTRACTION JOINT AT THE MIDPOINT.
 - CONCRETE DEPTH FOR STANDARD SIDEWALKS SHALL BE NOMINAL 4" MIN.; THICKNESS IN DRIVEWAY SHALL MATCH EXISTING DRIVEWAY.
 - CONCRETE STRENGTH SHALL BE 3300 PSI MIN.

**CITY OF FLORENCE
STANDARD DRAWING**

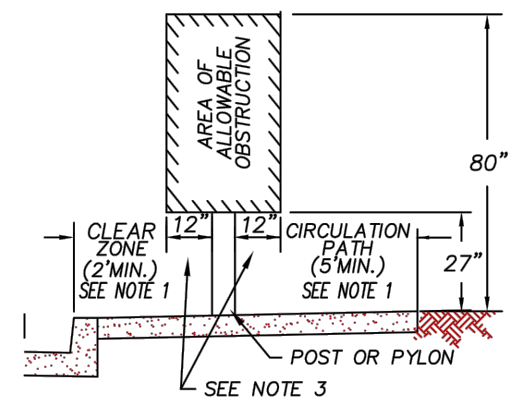
SIDEWALK

DATE: REV-10-25-12	DRAWING NO. F-205
-----------------------	----------------------

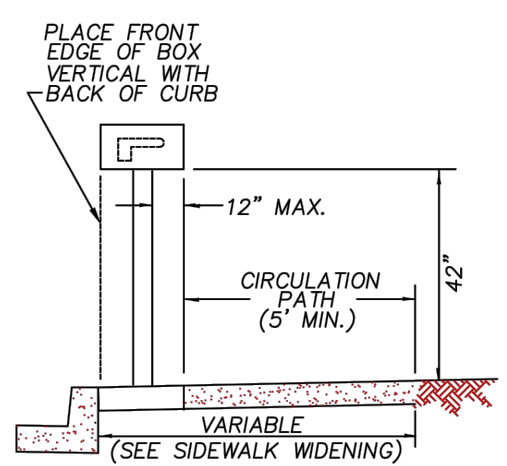
FILENAME: F-205.DWG



**REQUIRED SIDEWALK WIDENING
AROUND OBSTRUCTIONS**

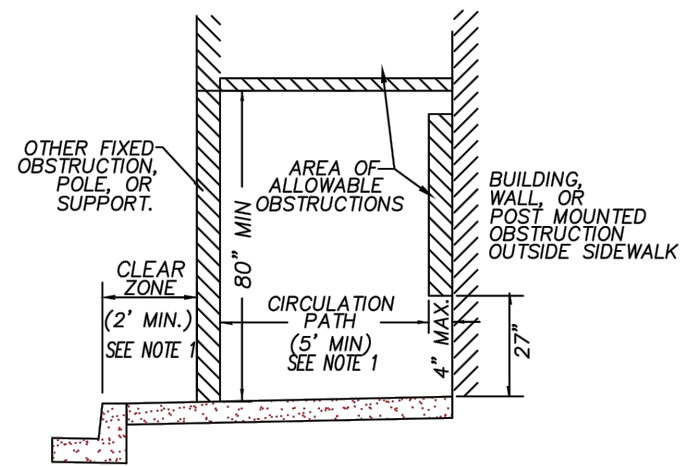


**POST MOUNTED OBSTRUCTION
WITHIN SIDEWALK**



TYPICAL MAILBOX INSTALLATION

- NOTE:**
- CLEAR ZONE AND THE CIRCULATION PATH MAY BE COMBINED PROVIDING A 5 FOOT MINIMUM SIDEWALK WIDTH IS MAINTAINED.
 - DEFLECT SIDEWALK AROUND AREA OF OBSTRUCTION WHEN OVERHANGS EXCEED ALLOWABLE LIMITS.
 - WHEN OBSTRUCTIONS ARE LOCATED WITHIN THE SIDEWALK AREA THE DIMENSION APPLIES IN ALL DIRECTIONS.
 - INSTALL FULL DEPTH EXPANSION JOINT AROUND ALL OBSTRUCTIONS PENETRATING SIDEWALK SURFACE.
 - ON CUL-DE-SACS, PLACE FRONT EDGE OF MAILBOX 6 INCHES BEHIND BACK OF CURB.
 - EXCEPTIONS TO THE REQUIREMENTS IN THIS DRAWING MUST BE APPROVED BY THE ENGINEER AND MUST COMPLY WITH 'AMERICANS WITH DISABILITY ACT.'
 - CONCRETE STRENGTH SHALL BE 3300 PSI.
 - MAIL BOX SHALL BE LOCATED 25' FROM CURVE RETURN OF INTERSECTION.



**PROTRUDING OBJECTS
AND OTHER OBSTRUCTIONS**

**CITY OF FLORENCE
STANDARD DRAWING**

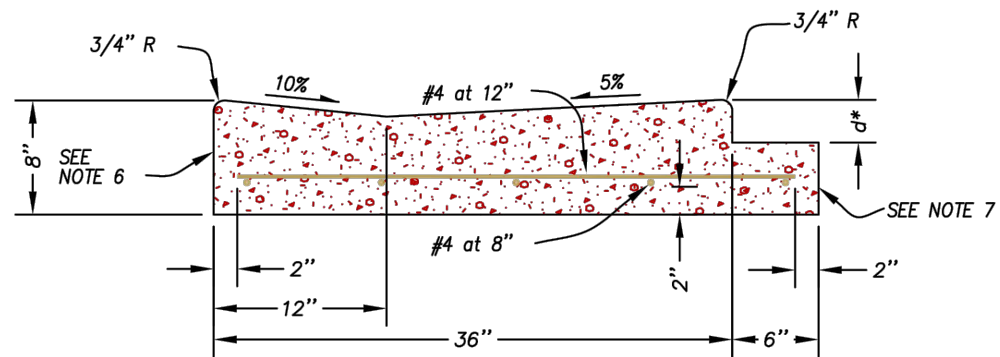
**SIDEWALK DETAILS:
OBSTRUCTIONS
AND
PROTRUDING OBJECTS**

DATE: REV-10-25-12	DRAWING NO. F-205a
-----------------------	-----------------------

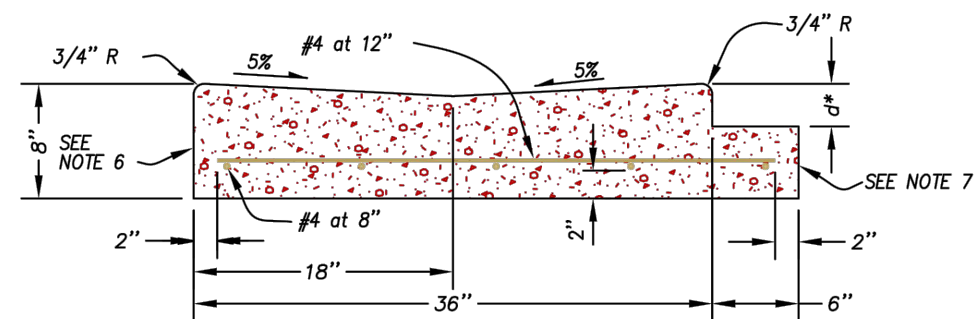
FILENAME: F-205a.DWG

DATE: 3/13/23 FILE: C:\CW_Projects\1503-022 Florence - Event Center Trail Improvements\04 Final Design\Drawings\DWG\Design Working\Spruce Street.Modify.dwg

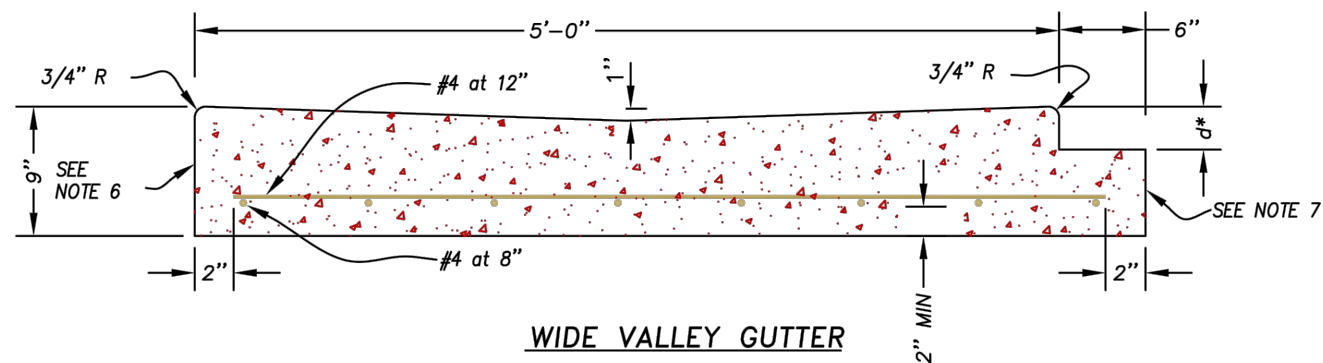
DATE: 3/13/23 FILE: C:\CW_Projects\1503-Florence\1503-022-Florence - Event Center Trail Improvements\04-Final Design\Drawings\DWG\Design-Working-Spruce Street.Modify.dwg



NON-SYMMETRICAL "V" GUTTER



SYMMETRICAL "V" TYPE GUTTER



WIDE VALLEY GUTTER

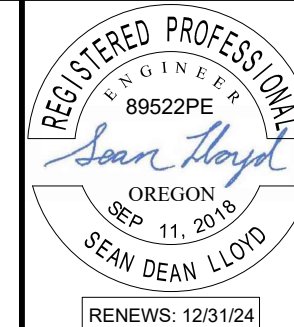
NOTES:

1. d^* = THICKNESS OF ASPHALT PAVING.
2. THE CONCRETE SHALL BE CLASS 3300.
3. THE TOTAL WIDTH OF THE NON-SYMMETRICAL "V" GUTTER MAY BE REDUCED TO 30" WHEN CONSTRUCTION WITH A CURB-EXTRUSION MACHINE.
4. CONSTRUCT 6" BENCH MONOLITHICALLY WITH VALLEY GUTTER TO EXTEND UNDER PAVING FOR PAVEMENT SUPPORT.
5. WHEN BENCH IS NOT REQUIRED, CONSTRUCT 1" BATTER ON VERTICAL FACE.
6. PLACE PREMOLDED FILLER AGAINST VERTICAL FACE WHERE VALLEY GUTTER ABUTS CONCRETE.
7. CONSTRUCT 6" x d DEPRESSED BENCH WHERE VALLEY GUTTER ABUTS ASPHALT PAVEMENT.

CITY OF FLORENCE
STANDARD DRAWING

CONCRETE
VALLEY GUTTER

DATE: MARCH 2007	DRAWING NO. F-204
---------------------	----------------------



REV.	DATE	DESCRIPTION	BY

DESIGNED BY: JRP	DRAWN BY: JRP	CHECKED BY: SDL	PROJECT NO: 1503-022
------------------	---------------	-----------------	----------------------

CITY OF FLORENCE LANE COUNTY	SIUSLAW ESTUARY TRAIL	VALLEY GUTTER DETAILS
Date	Sheet No.	Date
MARCH, 2023	D4	MARCH, 2023