

*City of Florence*  
**A City in Motion**

A clear glass filled with water, with a stream of water being poured into it from above, creating a dynamic splash and bubbles. The background is a scenic view of a lake and distant hills under a bright blue sky with scattered white clouds.

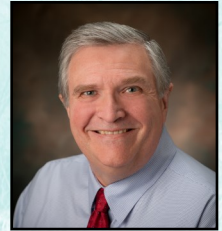
2018

**Water Quality  
Report**

**June 2019  
Edition**

# Message from the Director

It only seems like just last month I was putting together the Director's message for last year's annual water quality report. Time seems to be speeding by as a result of all the work we do to provide services to city residents and businesses. As always, Florence's Public Works Department stands ready to provide the essential services needed to ensure that our public infrastructure is designed, built, maintained and repaired to support the high quality of life Florence residents and businesses expect and deserve.



Mike Miller,  
Public Works Director

We are well positioned for growth of our City and our water system. City Council has been supportive in providing the appropriate financial resources for us to design, construct, operate, and maintain the necessary facilities to pump, treat, store, and deliver drinking water to you our customers.

It takes a team of dedicated individuals to manage a system of our size. Our employees are highly trained and dedicated professional staff that consistently provide safe drinking water for all of our residential and commercial water demands. We are proud to have such an important purpose. It is a privilege and a responsibility.

During 2018, the City completed a major water line replacement and upgrade project along Hwy 101 between Maple Street and Hwy 126, and along Hwy 126 from Hwy 101 to Quince Street. The 12-inch water mains replaced older undersized 10-inch and 6-inch water lines. We also completed an important upgrade to the way we read water meters. Using an Automated Meter Reading system, what took two individuals 4 days to complete, we can now read all the water meters, including check reads, in 3 hours!

In the pages that follow, you will also learn about where your water comes from and our multi-barrier approach to ensuring the highest quality water is available to you the consumer. This approach focuses on watershed and aquifer management to protect the quality of our drinking water source, treatment of the water prior to delivery, maintenance of the distribution system that delivers the water to the tap and monitoring the quality to ensure compliance.

Our record of excellence, trust, and innovation is a proud reflection of our skilled employees. We met all state and federal water quality standards in 2018 and continued to meet the outstanding performer requirements as set forth by the State of Oregon.

This edition contains information concerning the City of Florence Water System, Identification (WSID) #4100299, and covers all testing completed from January through December 2018. Florence Public Works employees are on call 24 hours a day, 365 days a year, to ensure that you always have access to safe drinking water. We invite you to read this report and welcome comments. If you have questions regarding water quality, please call us at 541-997-4106 Monday through Friday from 8AM-5PM. For after-hours emergency assistance, please call the Florence Police Department at 541-997-3515.

# Your Drinking Water

We receive our water supply from the North Florence Sole Source Dunal Aquifer, designated as a “sole source” aquifer by the US Environmental Protection Agency (EPA) in 1987. It continues to be the only “sole source” aquifer in the State of Oregon. The EPA defines a sole source aquifer as “an underground water source that supplies at least 50 percent of the drinking water consumed in the area overlying the aquifer. These areas have no alternative drinking water source(s) that could physically, legally and economically supply all those who depend upon the aquifer for drinking water.” All streams, creeks, lakes and wetlands (surface waters) in the aquifer boundary are “hydrologically connected” with the groundwater system.

In 2018, the City of Florence supplied water to approximately 8,795 consumers within the City's water service area. The water these customers received came from 13 dunal wells located just north of the City's water treatment plant at 2500 Willow Street. The well field is City-owned and consists of approximately 80 acres of carefully managed land



From left: Matt Hiatt, Plant Operator; August Murphy, Water/Wastewater Treatment Plant Superintendent; and Mark Asghari, Plant Operator

as recommended in the City's well head protection plan. The source water assessment and aquifer protection plan is available for customer review. Please contact Public Works at 541-997-4106 for more information.

The City of Florence water system uses two filter systems in a series to remove the iron from the raw groundwater. Three biological filters and six greensand filters comprise our filter system and these filters can treat up to three

(3) million gallons of water per day (mgd). The City's supply of raw groundwater contains dissolved iron in the range of 6-9 parts per million (ppm) before treatment. The water treatment plant oxidizes and removes all but 0.01 ppm through the treatment process.

As water flows through the treatment plant, 90% of the iron is removed through the use of biological oxidation and filtration. Air is injected into the water to increase the level of dissolved oxygen, and the naturally occurring iron bacteria assist in oxidation through various metabolic processes. The sand filters then separate the oxidized iron and bacteria from the water. The filtered water is then chlorinated to chemically oxidize the water and deactivate any residue bacteria. Potassium permanganate is added to the chlorinated water to provide additional oxidation before final filtration with greensand and anthracite coal. The color and odor of the water is removed with the iron, and the final product is cool, wet, colorless, odorless, and tastes great!

For more information, or to arrange a tour of the facility, please contact August Murphy, Matt Hiatt or Mark Asghari at the Water Treatment Plant at 541-997-7370.

# SPECIAL NOTICE FOR IMMUNO-COMPROMISED PERSONS

Some people may be more vulnerable to contaminants in drinking water than the general population. Immuno-compromised persons such as persons undergoing chemotherapy, persons who have undergone organ transplants, people with HIV/AIDS or other immune system disorders, some elderly and infants can be particularly at risk from infections. These people should seek advice about drinking water from their health care providers. Environmental Protection Agency and Centers for Disease Control and Prevention guidelines on appropriate means to lessen the risk of infection by *Cryptosporidium* and other microbial contaminants are available from the Safe Drinking Water Hotline at 1-800-426-4791.

## Lead in Drinking Water



The City of Florence is responsible for providing high quality drinking water, but cannot control the variety of materials used in household plumbing components. If present, elevated levels of lead can cause serious health problems, especially for pregnant women and young children. Lead in drinking water is primarily from materials and components associated with service lines and home plumbing. When your water has been sitting for several hours, you can minimize the potential for lead exposure by flushing your tap for 30 seconds to 2 minutes before using water for drinking or cooking. If you are concerned about lead in your drinking water, you may wish to request a free lead-in-water test from the LeadLine. Information on lead in drinking water, testing methods and steps you can take to minimize exposure is available from the LeadLine at **503-988-4000**, [www.leadline.org](http://www.leadline.org) or the Safe Drinking Water Hotline at **1-800-426-4791** or [www.epa.gov/safewater/lead](http://www.epa.gov/safewater/lead).

For more extensive testing, private laboratories can test your tap water for a fee. Not all labs are accredited to test for all contaminants. For information about accredited labs, call the Oregon Health Authority's Oregon Environmental Laboratory Accreditation Program at 503-693-4122.

## Hardness in Water

The City of Florence water source is considered to be very soft. "Hard water" is caused by higher than ordinary levels of dissolved minerals, such as magnesium and calcium, often enhanced by carbon dioxide. Hard water does not dissolve soap readily, so making a lather for washing and cleaning is difficult. Conversely, water containing little calcium or magnesium is considered soft. The City of Florence's water has a hardness of 19 ppm or 1.1 grains of hardness per gallon.

# Drinking Water Fluoridation

The City of Florence has been adding fluoride to its water service since the early 1960s. Currently, fluoride is added at the EPA recommended rate of 0.7 mg/l (milligrams per liter). According to the U.S. Center for Disease Control (CDC) and the U.S. Department of Health and Human Services, widespread use of fluoride has been a major factor in the decline of the prevalence and severity of tooth decay in the United States. When used appropriately, fluoride is both safe and effective in preventing tooth decay.



## Water Quality Testing



Ongoing water quality testing continues to be one of the highest priorities for the City's drinking water program in its commitment to providing premium safe drinking water to residents. The City collects nine microbiological samples per month in addition to samples required by the Oregon Health Authority Drinking Water Program and the Environmental Protection Agency to ensure that the City's drinking water meets state and federal standards.

## Test Findings

The City of Florence routinely checks for 42 Volatile Organic Compounds, 42 Synthetic Organic Chemicals and 16 Inorganic Chemicals, as required by the EPA. The City also takes nine Bacterial Samples at multiple locations throughout the City every month. The charts on the following page show the results of our most recent testing.

***If a known health-related contaminant is not listed in this report, it was not detected in the drinking water.***

In addition, in 2017 the City tested 20 homes in representative areas throughout the City for lead and copper (testing is only completed once every three years). We are pleased to report that none of the homes exceeded the Action Levels as determined by the EPA. For those citizens concerned about sodium levels, currently the sodium level in our water is 30.5 mg/L.



# WATER QUALITY DATA

## Inorganics and Bacteria

Parameter	Units	Goal MCLG	Allowed MCL	Max Detected in City's Water	Violation? Yes/No	Major Sources
Fluoride	ppm	4	4	0.90 mg/L	No	Water additive which promotes strong teeth; erosion of natural deposits
Nitrate	ppm	10	10	ND	No	Erosion of natural deposits
Nitrite	ppm	1	1	ND	No	Erosion of natural deposits
Total Coliform	No units	0	0	0	No	Naturally present in the environment

## Disinfection By-Products

Total Trihalomethanes	ppb	n/a	80	13.0	No	By-product of Chlorination
Haloacetic Acids	ppb	n/a	60	n/a	No	By-product of Chlorination

## Lead and Copper Sampling\*

Parameter	Units	Goal MCLG	Allowed MCL — or Action Level	90th Percentile	Violation? Yes/No	Major Sources
Copper	ppm	1.3	1.3	0.148	No	Corrosion of household plumbing
Lead	ppb	0	15.0	3.5	No	Corrosion of household plumbing

\*Based on 90% of homes tested being at or lower than the reporting limit. For lead and copper, a water supply is in compliance with the drinking water standards if 90% of the samples are less than or equal to the Action Level. This is a 3-year testing cycle. Last test was in 2017.

## Unregulated and Secondary\*\* (regulations provide advisory limits only) Tested in 2014

Parameter	Units	Max Detected in City's Water	Major Sources
Sodium	ppm	30.5	Erosion of natural deposits, water treatment additive

\*\*Unregulated contaminants are those for which EPA has not established drinking water standards. The purpose of unregulated contaminant monitoring is to help EPA determine their occurrence in drinking water and potential need for future regulation. There is currently no drinking water standard for sodium. At the levels found in drinking water, they are unlikely to contribute to adverse health effects.

## Radioactive Contaminants\*\*\* Tested in 2014

Parameter	Units	Goal MCLG	Highest Level Detected in City's Water	Violation? Yes/No	Major Sources
Gross Alpha	pCi/L	15	4.0	No	Erosion of natural deposits
Radium Combined (226 and 228)	pCi/L	5	1.2	No	Erosion of natural deposits

# Definitions

**ND:** None Detected.

**Action Level:** The concentration of a contaminant which, if exceeded, triggers treatment or other requirements which a water system must follow.

**Maximum Contaminant Level (MCL):** The highest level of a contaminant that is allowed in drinking water. MCLs are set as close to the MCLGs as feasible using the best available treatment technology.

**Maximum Contaminant Level Goal (MCLG):** The level of a contaminant in drinking water below which there is no known or expected risk to health. MCLGs allow for a margin of safety.

**Parts per Million (ppm) or Milligrams per Liter (mg/L):** A unit measurement describing the level of detected contaminants that is one part by weight of analyte to one million parts by weight of the water sample. One part per million corresponds to one penny in \$10,000 or approximately one minute in two years. One part per million is equal to 1,000 parts per billion.

**Parts per Billion (ppb) or Micrograms per Liter (µg/L):** A unit measurement describing the level of detected contaminants that is one part by weight of analyte to one billion parts by weight of the water sample. One part per billion corresponds to one penny in \$10,000,000 or approximately one minute in 2,000 years.

**Picocuries per Liter (pCi/L):** A standard measurement of radioactivity in water.

**Treatment Technique (TT):** A required process intended to reduce the level of contaminant in drinking water.

**Action Level (AL):** The concentration of a contaminant, which, if exceeded, triggers treatment or other requirements.

**Unregulated Contaminants:** Water quality standards for unregulated contaminants are established as guidelines to assist public water systems in managing drinking water for aesthetic considerations such as taste, color, and odor. These contaminants do not present a risk to human health.

# What the EPA Says About Drinking Water Contaminates



Drinking water, including bottled water, may be reasonably expected to contain at least small amounts of some contaminants. The presence of contaminants does not necessarily indicate that water poses a health risk. More information about contaminants and potential health effects can be obtained by calling Environmental Protection Agency's (EPA) Safe Drinking Water Hotline **1-800-426-4791** or at [www.epa.gov/safewater](http://www.epa.gov/safewater).

The sources of drinking water (both tap water and bottled water) include rivers, lakes, streams, ponds, reservoirs, springs and wells. As water travels over the surface of the land or through the ground, it dissolves naturally occurring minerals and, in some cases, radioactive material, and can pick up substances resulting from the presence of animals or from human activity. Contaminants that may be present in source water include:

- **Microbial contaminants**, such as viruses and bacteria, which may come from sewage treatment plants, septic systems, agricultural livestock operations and wildlife.
- **Inorganic contaminants**, such as salts and metals, which can be naturally occurring or result from urban stormwater runoff, industrial or domestic wastewater discharges or farming.
- **Pesticides and herbicides**, which may come from a variety of sources such as farming, urban stormwater runoff and home or business use.
- **Organic chemical contaminants**, including synthetic and volatile organic chemicals, which are byproducts of industrial processes, and can also come from gas stations, urban stormwater runoff and septic systems.
- **Radioactive contaminants**, which can occur naturally.

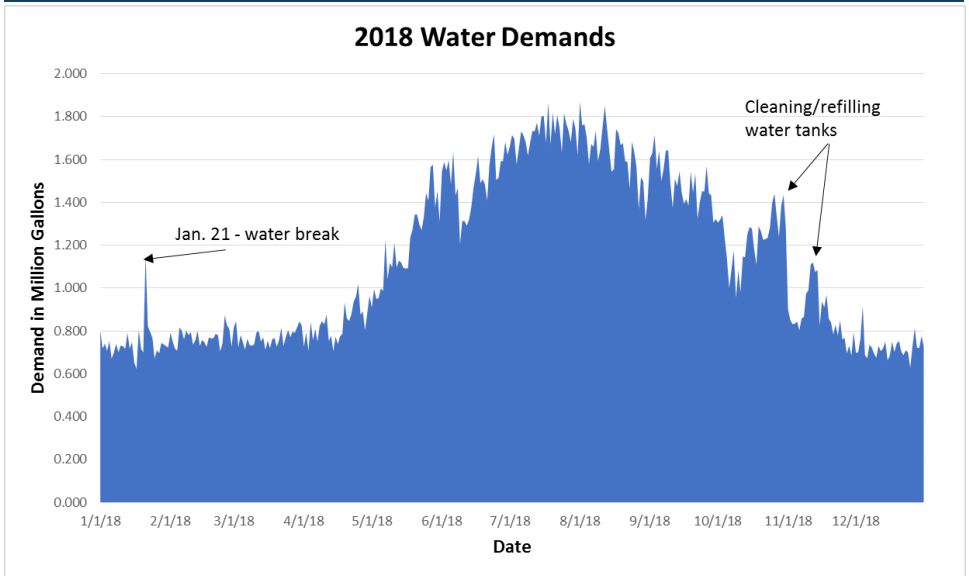
In order to ensure that tap water is safe to drink, the EPA has regulations that limit the amount of certain contaminants in water provided by public water systems and requires monitoring for these contaminants. Food and Drug Administration regulations establish limits for contaminants in bottled water, which must provide the same protection for public health.

## Water Conservation

Homes of today use water for many different purposes! Everything from washing dishes to bathing, doing laundry or washing our car can add up to several gallons or even hundreds of gallons of water used every month. If you are considering a water conservation plan in your house, there are several tips and tricks to reduce the amount of water consumed.

- **In The Kitchen** - Keep a large pitcher of water in the refrigerator for use whenever you need cold water. This will eliminate the need to run water to wait for it to get cold.
- **In The Bathroom**—Look for leaks. One drip every second adds up to 5 gallons per day!
- **Outside**—Consider a rain barrel to catch water to help nourish outdoor plants. These special containers harvest rain quickly and will prevent needing to use a hose or sprinkler system as often.

# 2018 Water Demands



The above chart represents our system water demands for the 2018 calendar year. Our peak demand day occurred on August 1, 2018 with 1.870 million gallons used. The system experienced a water line break in the middle of the night on January 21, 2018 that resulted in a loss of 439,000 gallons of water.

The greatest demand for water occurs during the summer months each year (June to September) as can be seen on our Daily Water Demand graph above. Florence's summer water use increases dramatically due to outdoor watering. The spiking of the water use during the summer is an indication of dry weather patterns and heavy outdoor water use.

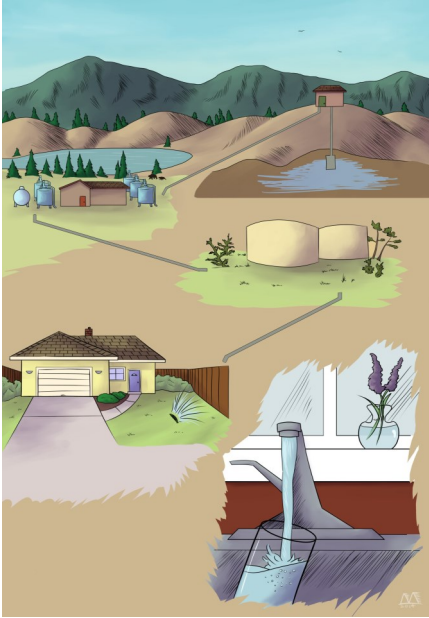
## Fascinating Facts About Water!

- Water expands by 9% when it freezes. Frozen water (ice) is lighter than water, which is why ice floats in water.
- A jellyfish and a cucumber are each 95% water.
- Americans drink more than a billion glasses of tap water per day.
- Bottled water can be up to 2000 times more expensive than tap water.
- One (1) gallon of gasoline can contaminate approximately 750,000 gallons of water
- According to the EPA, a full bathtub requires about 70 gallons of water, while taking a five-minute shower used 10—25 gallons.

<https://www.espwaterproducts.com/water-facts/>



# Source Water Protection



- 13 wells located in the North Florence Dunal Aquifer supply water to the City
- The Water Treatment Plant treats up to 3 million gallons of water per day
- Water is distributed to over 4,000 water connections through 66 miles of distribution pipes
- The City of Florence can store up to 4.5 million gallons of water in our storage tanks
- 410 million gallons of water produced and delivered to the community in 2018
- 69-inches of precipitation per year re-charges the aquifer

## Below are some tips for how we can all help protect our water:

- Properly dispose of pharmaceuticals.
- Use car-wash facilities for cleaning vehicles, RVs and boats.
- Inspect septic systems to ensure they are working properly. Septic systems that do not operate properly contaminate our ground water.
- Switch to environmentally safe household cleaning products.
- When enjoying the dunes, remember their ecological importance. Ensure that equipment is functioning properly and not leaking fluids that can seep into the groundwater.
- Don't put anything except water down storm drains. These drains carry stormwater to our local waterways, including Munsel Creek, the Siuslaw River and the Pacific Ocean. Used motor oil, detergents, lawn fertilizers, pesticides, trash and other contaminants get carried by stormwater to local waterways and cause unnecessary harm to fish and aquatic life.
- Always dispose of RV/Campground waste properly.
- Utilize the Lane County Special Waste Program to dispose of hazardous wastes instead of sending it to the landfill. For information about special and hazardous waste disposal, call 541-682-4120.
- Properly use, store and dispose of herbicides and pesticides.
- Properly dispose of petroleum, solvents and volatile organic compounds (VOCs).

# Water Conservation Tips

## Xeriscaping for water conservation and stormwater management

Xeriscaping (pronounced Zer-i-scape), means “landscaping for water conservation.” Many people think of rocks and cactus when they hear the word xeriscape, but these outdoor landscapes can be beautiful compliments to the local environment, with plants and features that thrive in the coastal climate. There are seven principles to xeriscaping, and when used together create a beautiful landscape that conserves water and manages stormwater runoff.

1. Good Design and planning
2. Soil preparation and amending the soil
3. Appropriate use of turf grass
4. Group plants by water needs
5. Efficient irrigation system
6. Mulches to retain moisture
7. Good Maintenance



## Water Word Scramble

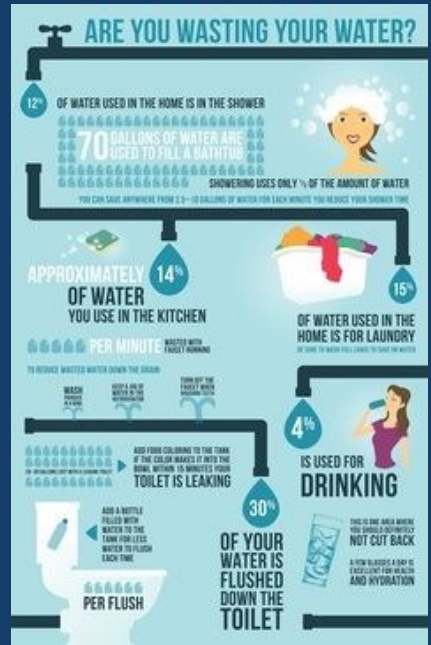
1. All living things need \_\_\_\_\_ to live. (tawer)
2. When water evaporates, it travels into the air and becomes part of a \_\_\_\_\_. (dlocu)
3. One percent of the \_\_\_\_\_ water on earth is available to drink. (eshfr)
4. We \_\_\_\_\_ water in the liquid form. (ikrdn)
5. Check for leaks and save hundreds of \_\_\_\_\_ of water a day. (gllonas)
6. You'll save water by taking a quick \_\_\_\_\_. (howser)



From the United States EPA, Office of Water [www.epa.gov/safewater](http://www.epa.gov/safewater)  
Other activities can be found at: <http://wateruseitwisely.com/kids/kids-old/>

# All About Water

- 12% of water used in the home is in the shower
- 14% of water used in the home is in the kitchen
- 14% of water used in the home is for laundry
- 30% of water is flushed down the toilet
- 4% of water used in the home is for drinking



## Contact Information

### City of Florence Public Works

2675 Kingwood Street  
Florence, OR 97439  
541-997-4106

### Water Treatment Plant

2500 Willow Street  
Florence, OR 97439  
541-997-7370

The city of Florence is proud of the high quality of our water supply, which meets or exceeds all state and federal water quality requirements.

If you have any questions regarding your water quality or about information presented in this report, please call us at the Water Treatment Plant 541-997-7370 or the Public Works Department 541-997-4106 or visit our website at [www.ci.florence.or.us](http://www.ci.florence.or.us).

We encourage public interest and participation in decisions affecting our drinking water. City Council meetings usually occur on the first and third Mondays of each month at 5:30pm at City Hall. City Hall is located at 250 Hwy 101. For information on meeting schedules and agendas contact 541-997-3437 or visit the City's website at [www.ci.florence.or.us](http://www.ci.florence.or.us).

This report contains important information about your community's water system. Have it translated or speak to a friend that understands it well.

Este informe contiene información muy importante. Encuentra un amigo que te ayude a entenderlo. Gracias.