

Waters in Common

Siuslaw Estuary Partnership

2012



An Integrated Multiple Objective Approach To Watershed Protection and Restoration

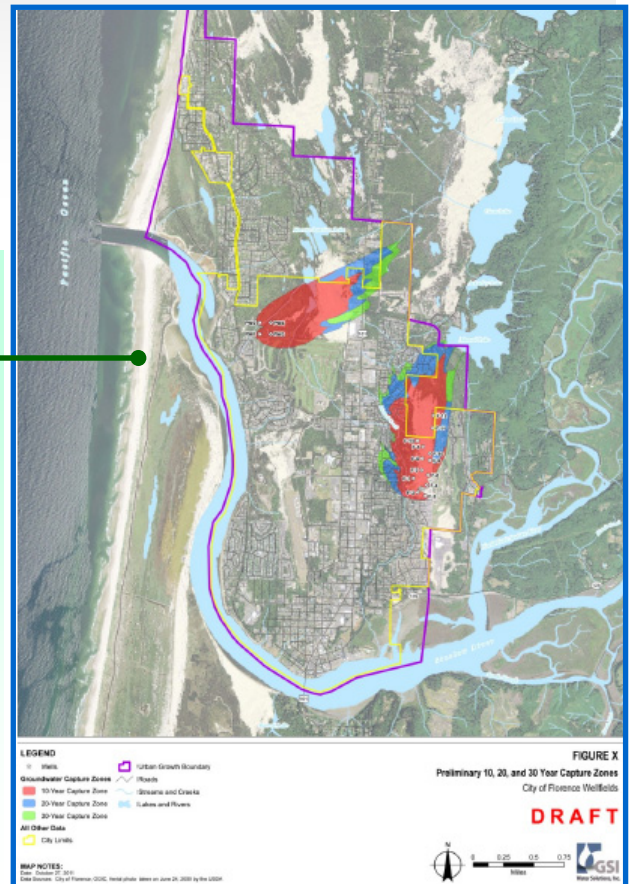
Siuslaw Estuary Partnership Hosts Final Public Open House Monday, April 30, 2012, 4:00-7:00 p.m. Presentations start at 5:15 p.m.

The Partnership will hold its 3rd and final Open House for the public to review and comment on all products slated to be adopted or completed in 2012. This 3 year project, begun in 2009, is a collaborative effort by the City of Florence and its partners to protect and improve water quality and fish and wildlife habitat in the lower Siuslaw River Watershed. Drop in and talk with staff and/or attend one or more of these presentations:

- 5:15: Aquifer Protection Plan
- 5:35: Water Monitoring Program
- 5:55: Wetlands and Riparian Areas
- 6:10: Siuslaw Estuary Trail
- 6:20: Key Estuary Wetlands

North Florence Sole Source Dunal Aquifer and Aquifer Protection Plan

Groundwater, Surface Water and Stormwater: it's all connected. Did you know that our groundwater is actually "feeding" the lakes and that the lakes are not the supply for groundwater? At the Open House, you will learn about the aquifer, potential sources of contamination, and proposed strategies for long term protection of the resource. The Sole Source Aquifer is the City's Drinking Water Source. The Aquifer Protection Plan will contain management strategies to protect the aquifer, such as public education, incentive programs, technical assistance, emergency response, and a Drinking Water Protection Overlay Zone. The zone, if adopted, would restrict the use of hazardous chemicals in the "capture zones" for future City wells (see map). These are the areas where such uses could threaten the quality of water in the wells for future use as a drinking water source.



Florence Surface and Ground Water Monitoring Program

The City's drinking water in City wells is monitored on a regular basis and meets all drinking water standards. The City also monitors the quality and flow of groundwater and surface waters in Ackerley and Munsel Creeks to ensure that the aquifer, overall, is not contaminated. Results of the monitoring program to-date will be presented at the Open House.

Source: Water Images on Tap ©2000



Significant Wetlands and Riparian Areas

At the Open House, review the draft *Significant Fresh Water Wetlands and Riparian Areas in the Florence Urban Growth Boundary (UGB)*, and proposed protection measures.

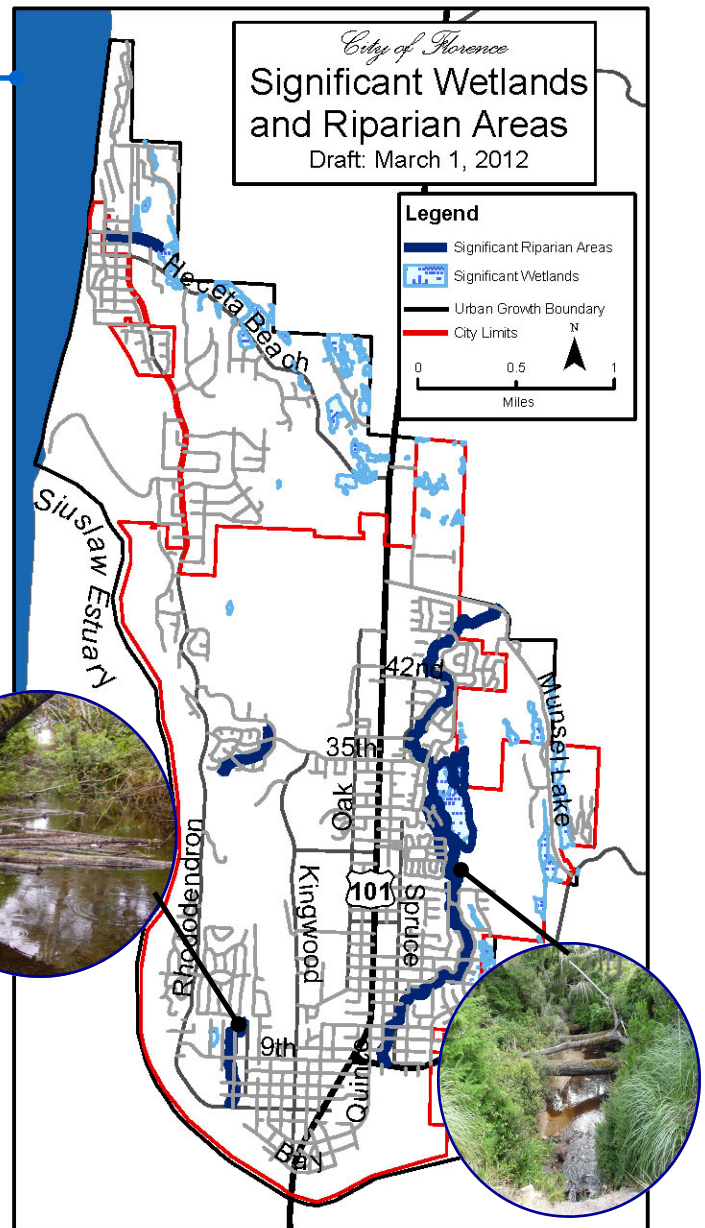
Significant Wetland Areas in the Florence UGB are those that play strong roles in:

- Hydrologic Control: water storage and delay or “flood control;”
- Water Quality: sediment retention and stabilization, phosphorus retention, nitrate removal and retention, and thermoregulation; or
- Habitat for fish, aquatic, or terrestrial species

Significant Riparian Areas are those that play a strong role in water quality, flood management, thermal regulation, and/or wildlife habitat.

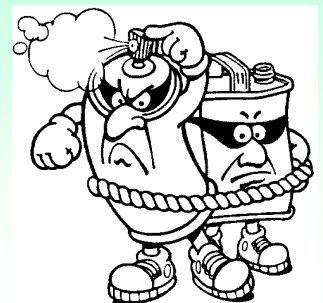
All of the wetlands, and all but two of the riparian areas, in the Florence UGB are significant, almost exclusively due to their role in protecting water quality and/or flood control, and these resources are critically important for protecting fish and wildlife habitat as well.

As proposed, protection of these resources would prohibit development, except as needed for planned public facilities and where lots would be made unbuildable. The proposed program includes incentives to help ease the burden of the regulations on individual property owners. Come to the Open House and share your ideas on the best ways to implement the program!



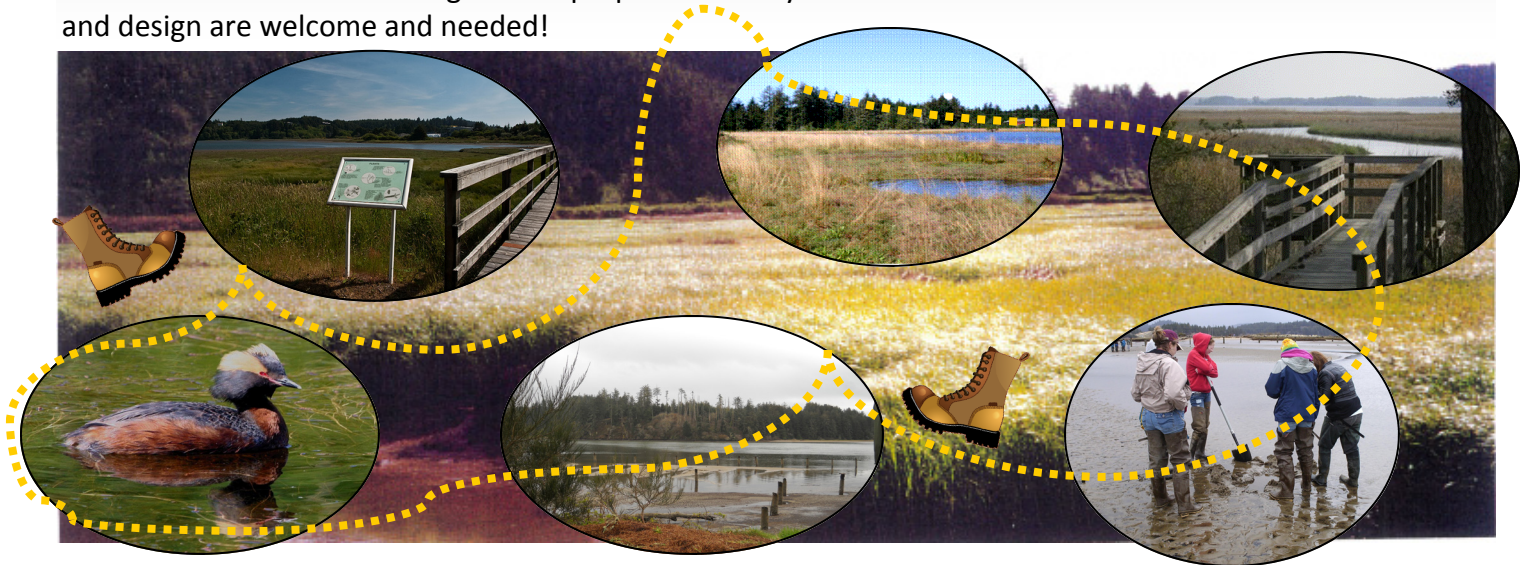
Mark your calendars for Friday April 20th 12pm - 5pm and Saturday April 21st 8am - 2pm, when Lane County’s Special Waste Team will be accepting household hazardous waste at the Florence Lane County Transfer Station, 2820 Rhododendron Drive (behind the Humane Society).

Hazardous wastes like mercury thermometers, cleaners, paint thinners, rechargeable batteries, fertilizers, auto fluids and many more items contain metals and chemicals that can end up in our drinking water, rivers and lakes if buried, flushed down the drain or poured onto the ground or into storm drains.



A Vision for the Siuslaw Estuary Trail

The City, its partners, the Port of Siuslaw, and the Oregon Department of Transportation have been discussing the detailed location and design of the proposed estuary trail. Your ideas and comments on the trail location and design are welcome and needed!



Public Education and Stewardship Programs

The Siuslaw Estuary Partnership joined with several groups in the last two years providing education and stewardship opportunities. The SEP hosted the Discovery Trip for the last two Heceta Head Coastal Conferences. They included presentations and walking tours of the ecology, human influences, and history of the Siuslaw Estuary. In partnership with the Siuslaw School District and retired teacher Jim Grano, the 8th grade students participated in a hands-on workshop and an exploration and stewardship field studies trip. The students removed over 60 cubic yards of scotch broom from the estuary. The Siuslaw 3rd and 4th grade students participated in an art contest and a learned about the sources and importance of safe water for humans and the environment. Cai Fleming's art of humans, salmon, river and rainbow is featured in the newsletter banner.



Raptor Views by Philip Bayles



Key Estuary Wetlands

Come learn about this project coordinated by the Siuslaw Watershed Council (SWC). Both the North Fork Marsh and the Waite Ranch Tidal Wetland Restoration Site are now owned by McKenzie River Trust and the Management Plan for the North Fork Marsh is complete. Data collection, monitoring, and preliminary assessments on Waite Ranch for the SEP funded portion of the project are complete. The SWC and partners will continue work with diverse funding on the larger

Waite Ranch Project beyond 2012 with the on-the ground implementation and post-implementation monitoring following. For more information, visit the Siuslaw Watershed Council web site: www.siuslaw.org.

Answer: b. An aquifer is an underground bed or layer of permeable rock, sediment, or soil that yields water.

Attend the Open House!

- Learn from presentations on the topics and proposals discussed in this newsletter
- Talk with staff from the City and its many federal, state, tribal, and local partners who will be there to answer your questions
- Tell us what you think! We want to know what you think about the outcomes of the project and the proposed protection measures

Public Open House

Monday, April 30, 2012

4:00-7:00 p.m.

Presentations at 5:15 p.m.
Florence Events Center, 715 Quince St.

For information:

Sandra Belson, Project Manager
Sandra.belson@ci.florence.or.us
541-997-8237

Visit the Web Site: www.SiuslawWaters.Org!

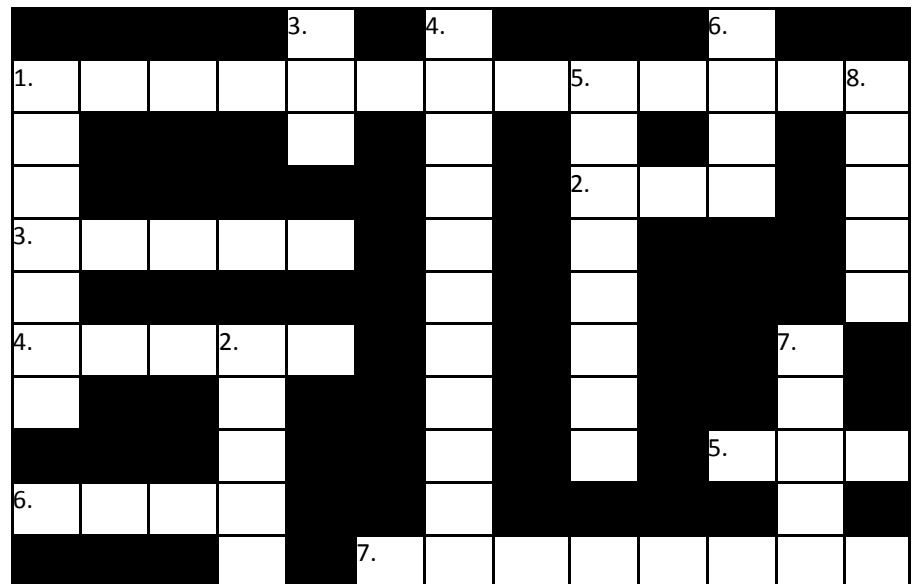
Before you come to the Open House, visit the web site and get more information about the topics and proposals in this newsletter; and come prepared to ask questions and provide comment.

This project has been funded wholly or in part by the United States Environmental Protection Agency (EPA) under assistance agreement WC-00J04801-0 to the City of Florence. The contents of this document do not necessarily reflect the views and policies of the EPA, nor does mention of trade names or commercial products constitute endorsement or recommendation for use.

What is an aquifer?



- a. A wave pool
- b. An area underground that is a source for drinking water
- c. A fun place to see fish in tanks
- d. A bridge that carries water across a river



Answer on bottom of page 3.

Across: 1. contamination 2. key
3. tail 4. ranch 5. you 6. sole 7.
stewards Down: capture 2.
creek 3. cat 4. significant 5.
ackley 6. city 7. flood 8. north

ACROSS

1. Monitoring Program looks for
2. SWC restores ___ Estuary Wetlands
3. Will provide river views & education about the estuary.
4. Waite _____ is being restored
5. Who should attend the Open House
6. _____ Source Aquifer?
7. 8th grade students removed noxious vegetation making them _____

DOWN

1. Zone of protection & restriction
2. Munsel ___ is a riparian area
3. Artist for newsletter banner
4. Type of wetland playing a strong habitat role
5. Drinking water monitored here.
6. Under funding agreement with EPA.
7. Riparian Areas play strong roles in _____ management.
8. _____ Florence Sole Source Aquifer