

Waters in Common

Siuslaw Estuary Partnership

2011

Why Are Estuaries Important?

Estuaries are the portion of the river where fresh water mixes with seawater. The Siuslaw estuary extends from the river mouth almost to Mapleton.

Estuaries are important because:

- Their sheltered waters are home to countless plants and animals that live in water that is part fresh and part salty.

- Estuaries protect water quality by filtering pollution and reducing sediments.

- Eelgrass shelters fish & controls water currents.

- Estuaries and the land surrounding them are places where people live, work, kayak, fish, hike, and bird watch.

- Livelihoods depend on healthy estuaries.



NOAA

Great Egret, An inhabitant of the Siuslaw Estuary

Siuslaw Estuary Partnership

A collaborative effort by the City of Florence and its partners to protect and improve water quality and fish and wildlife habitat in the lower Siuslaw River Watershed.

This second newsletter highlights Siuslaw Estuary Partnership Projects and key issues they are trying to address. It also includes ways you can be involved in protecting the environment we share.

What Is the Key Estuary Wetlands Project?



Roy Lowe, USFWS

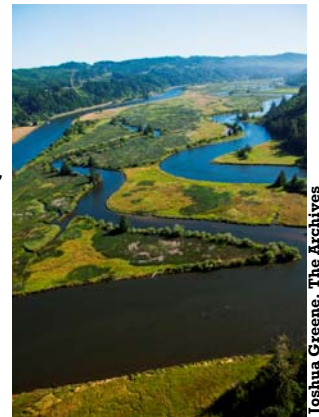
Waite Ranch, 217 acres, former cattle ranch to be restored with tidal connectivity

The Siuslaw Watershed Council along with other partners and funders will be protecting and restoring the North Fork Marsh & Waite Ranch recently acquired by McKenzie River Trust.

One goal is to re-establish the tidal exchange between the river and Waite Ranch's property interior.

Activities associated with this project include creating a management plan, surveying, acquiring tide and channel morphology and data & monitoring the site.

Restored tidal connectivity can provide nesting, feeding and nursery areas for fish & wildlife, improve water quality and habitat connectivity.



Joshua Greene, The Archives

Duncan Island, An example of tidal exchange in property interior

Help Shape the Vision for a Siuslaw Estuary Trail

The Partnership is drafting the Vision for a Siuslaw Estuary Trail. You can help shape this vision by sharing your ideas with staff and stakeholders at the **Open House on Monday, April 25, 4-7 pm.**

For a sneak preview, see the Draft Report for the Siuslaw Estuary Trail Vision: Location and Design Options on the web site, www.siuslawwaters.org.



East of the Port of Siuslaw

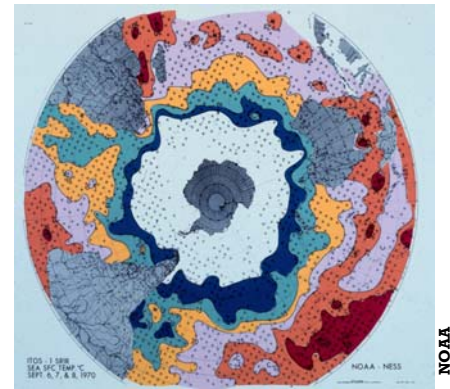


Kelli Weese, City of Florence

How Will Climate Change Affect Us?

We need to start thinking about and preparing for climate change. At the [Open House on Monday, April 25, 4-7 pm](#), you will hear first hand from Oregon Climate Change Research Institute staff how climate change could affect Florence! You will also learn what actions we can

all take to adapt to climate change. This is a major theme that touches all aspects of the Siuslaw Estuary Partnership. For a preview, see the Draft Climate Change Report on the web site www.siuslawwaters.org.



Sea Surface Temperatures of the Southern Hemisphere

Wetland & Riparian Areas-Nature's Sponge



Florence Area Riparian Map Inset
City of Florence

Wetlands, lakes and creeks are threatened by development. Active measures to protect them are needed.

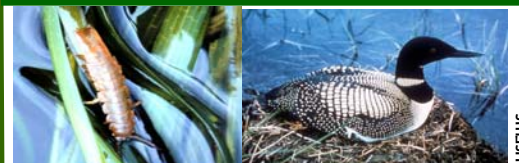
Wetlands & riparian areas trap pollutants such as the copper in car brake dust, auto fluid leaks, failing septic systems, and landscape and agriculture applications such as fertilizers.

Some animals such as clams spend their whole lives in a wetland, many such as salmon use it only for a particular time in their lives, such as for hatching eggs and raising young.

Wetland plants & mud trap nutrients and pollutants in roots and spaces in the soil leaving water much cleaner than when it entered.

10 Things You Can Do To Help Protect Our Land and Water

1. **Pick up your pet's wastes**— It can make both people & aquatic life sick.
2. **Fix Car Leaks**—Road-run-off goes into storm drains that empty into the river.
3. **Volunteer** for local restoration, clean-up & monitoring activities.
4. **Water landscaping** in the morning or evening to reduce evaporation.
5. **Safely dispose** of cleaners, auto & hobby fluids at the Florence Transfer Station April 22-23.
6. **Check and clean your septic system** regularly & replace when needed.
7. **Use permeable surfaces** in yards & driveways letting water flow through naturally.
8. **Landscape & garden** with native and drought tolerant plants.
9. **Reduce your use** of herbicides, fertilizers, plastic bottles & bags—many end up in the rivers & ocean.
10. **Plant native plants** along streams & wetlands, to provide shade & habitat.



Food Chain—Isopod on Eelgrass & Common Loon

USFWS

The Siuslaw Estuary Partnership is a collaborative effort of federal, state, and local partners to protect and improve water quality and fish and wildlife habitat in the lower Siuslaw River Watershed. This 3 year project is funded by project partners and the US Environmental Protection Agency. An Interdisciplinary Team of 18 partners and 2 stakeholder groups provide guidance on the project.



Community Stakeholders Group

Share your ideas and concerns with the two stakeholder groups at the **Open House on April 25th**.

Go to siuslawwaters.org for a list of stakeholder members and their affiliations.



Elected Officials Stakeholders Group

Keep it Clean! Protecting Water Quality

| | Oct | Fall Nov | Dec |
|--|-----|----------|-----|
| Streamflow | Y | Y | Y |
| Temperature - HOBO | Y | Y | Y |
| Cond, pH, ORP, T, DO | Y | Y | Y |
| DO- Winkler Titration | Y | Y | Y |
| Turbidity | Y | Y | Y |
| Coliform | Y | Y | Y |
| Total P | | | |
| Nitrate | Y* | | |
| Alkalinity | | | |
| Total Organic Carbon | | | |
| Common Ions | | | |
| Zinc and Copper | | | |
| (Public Works on Munsel Creek site only) | | | |
| Lead (Below Gun Club only) | | | |
| VOCs | | | |
| IOC's | | | |
| Glyp /2,4-D | | | |
| Caffeine | | | |
| Zinc and Copper (Demonstration Site Only**) | | | |
| Oil and Grease (Demonstration Site Only**) | | | |
| Pharmaceuticals & Personal Care Products (Clear Lake Only) | | | |
| * Preliminary sample only | | | |
| ** First flush in 2011, approximate month | | | |
| Monthly + 2 storms | | | |
| Quarterly + 2 storms | | | |
| Semi-Annually + 2 storms | | | |
| Semi-Annually + 1 storm | | | |
| First flush only (Year 2) | | | |
| Annually | | | |

Florence has the only sole source aquifer in the State of Oregon. This means that, if the aquifer is contaminated in a manner that cannot be fixed, the City will lose its drinking water source.

Water from the aquifer flows into the estuary and is connected to the lakes and creeks. Protecting water quality protects fish and wildlife, too!

3 Siuslaw Estuary Partnership projects will assure that water quality is protected—the Surface and Groundwater Monitoring Program, Aquifer Protection Plan, & Stormwater Best Management Practices.

For a complete report on all water testing done to date and the complete monitoring schedule, visit the Water Quality and Quantity page of the project web site: www.siuslawwaters.org.



Unused medicines?
Bring them to the Florence Justice Center—don't flush down the toilet, put down the drain, or in the trash.

Art Contest: Enter to Win

Calling all Artists: beginning, aspiring or advanced. Attend the April 25 Open House and enter your work in the Project Logo & Art Contest.

For more information go to www.siuslawwaters.org



Das Meer, (Cover Inset) MJ Schleiden, 1874,

Protect Your Water—See Inside!

Page 1—

Why are Estuaries Important?

What are Key Siuslaw Estuary Wetlands?

Help Shape a Vision for the Siuslaw Estuary Trail!

Page 2—

How will Climate Change Affect Us?

Wetland & Riparian Areas-Nature's Sponge

10 Things You Can do to Protect Land & Water

Page 3—

Siuslaw Estuary Partnership & Stakeholders

Keep it Clean! Protecting Water Quality

Art Contest: Enter to Win!

We're on the Web!
Siuslawwaters.org

Public Open House

April 25, 2011

4:00-7:00 p.m

Presentations at 5:00 p.m.

Florence Events Center

715 Quince St.



For Information:

Sandra Belson, Project Manager

sandra.belson.ci.florence.or.us

541-997-8237

This project has been funded wholly or in part by the United States Environmental Protection Agency under assistance agreement WC-00J04801-0 to City of Florence. The contents of this document do not necessarily reflect the views and policies of the Environmental Protection Agency, nor does mention of trade names or commercial products constitute endorsement or recommendation for use.

City of Florence
250 Hwy 101
Florence, OR 97439

PRESORTED STD
US POSTAGE
PAID
FLORENCE, OR
PERMIT #2

Current Resident or Business
Florence, OR 97439