



ROLLING DUNES PARK IMPROVEMENT PROJECT

After months of hard work and dedication, the Rolling Dunes Park project is finally complete, marking a significant milestone for the community of Florence. What once began with the careful removal and preservation of Native American carved panels has culminated in a beautifully transformed space that now includes expanded tennis courts with six dedicated pickleball courts, a new precast concrete restroom facility, and a charming heavy timber-style picnic shelter. Despite initial setbacks and challenges, the Parks division, along with contractors and community support, has successfully delivered a revitalized park that promises to serve as a vibrant hub for outdoor activities and community gatherings. This project, funded in part by the National Park Service's Land & Water Conservation Grant through the Oregon Parks and Recreation Department, stands as a testament to the perseverance and collaborative spirit of all those involved, creating a space that residents can enjoy for years to come.

ABOUT THE PROJECT

The Rolling Dunes Improvements Project expanded the outdoor tennis and pickleball courts at Rolling Dunes Park, increasing the facility size from 14,400 to 18,600 square feet and adding six permanent pickleball courts. The original court design called for two permanent pickleball courts and four temporary pickleball courts on the existing tennis courts. After talking with those who use the courts most it was decided to change the lay out to six permanent pickleball courts and one tennis court free of pickleball lines.

The project also upgraded accessibility features, including a dedicated van accessible parking space in the parking area, ADA-compliant curb ramp and accessible route, as well as a new bike rack. The picnic shelter and bathrooms were replaced, introducing ADA-compliant restrooms and a storage room for pickleball equipment. The new shelter was designed as an open timber structure to improve sight lines through the park and feature two wheelchair accessible picnic tables.



THE PROJECT PROCESS

In June 2024, Parks division crews removed the carved panels depicting Native American graphics for preservation and safe keeping. They will be reinstalled as wind breaks near the new picnic shelter.



In September, trees and shrubs were removed in the construction area, and our contractor, Ray Wells, Inc., began site preparation by removing fencing, cutting the tennis court edge, and excavating undesirable soil. After removing unwanted soil and compacting new materials, the court expansion area was paved on September 24, 2024.



In October, the fencing contractor installed new posts and fence fabric, while Parks crews added refurbished benches and installed a new windscreen. A 6-foot-wide windscreen was chosen based on professional advice to reduce strain on the fence and improve wind blocking, specifically on the west and north sides of the court area to counter prevailing winds.



With unforeseen delays early in the project we were unable to install the court surfacing material for the expansion area or resurface the existing courts like we had hoped before the weather set it. The project was put on hold until warmer weather and brighter sun.



RESTROOM

In February of 2025 Ray Wells, Inc completed the removal of the existing restroom and picnic shelter. Once the structure was removed, the contractor prepared the gravel pad to place the new engineered precast concrete restroom facility.

March 13th was a big day. The CTX precast concrete restroom facility arrived at 9am and was placed on its pad at Rolling Dunes Park around 1pm. The CXT building arrived on a low boy trailer and a large crane was used to hoist the structure into place. The tight quarters made it challenging. After two flat tires on the truck and trailer from maneuvering into place, the truck driver was successful in positioning the trailer so that the crane operator could safely 'pick' the precast concrete structure from the trailer. Once the facility was lifted off the trailer it wasn't long before it was resting on its new gravel pad.

With the restrooms in place, in April our concrete specialty contractor poured the new ADA ramp from the parking lot to the existing sidewalk and from the ADA ramp to the entry gate to the tennis courts. Then, Parks staff along with Utility division crews poured the concrete for the new sidewalks in front of the restrooms and on the east side of the building in order to access the storage area. Additionally, they poured a small splash pad along the south side of the building to prevent staining of the building from roof runoff splashing onto the soil.

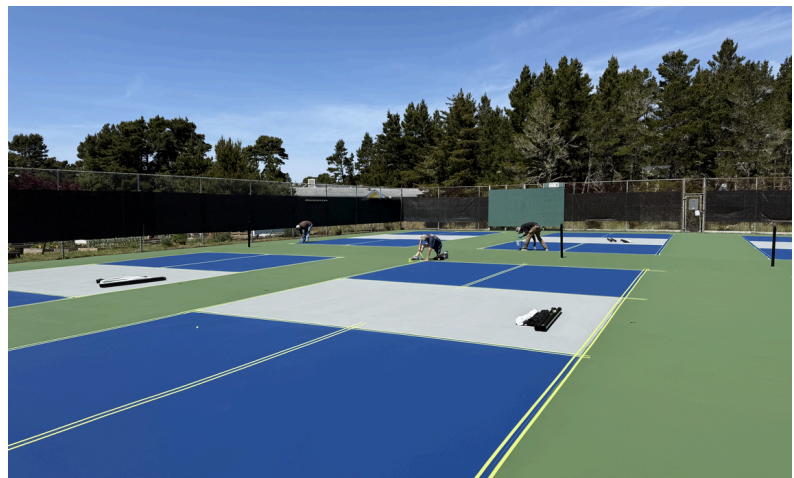


COURT SURFACING

Our tennis surfacing professional started work at the end of April. They first installed the sleeves for the new tennis and pickleball posts and anchor points for the tennis net. A day was spent pressure washing the court surfaces, removing sand, debris and cleaning the cracks.

Next came leveling and filling areas of the existing court that have settled. Smaller cracks (under $\frac{1}{2}$ inch) were filled with acrylic or rubberized tennis court crack filler. The Larger cracks were first bottom-filled with sand or backer rod before filler application. After filling, the surfaces were smoothed with a trowel and reinforced with a fiber membrane, feathered out for a seamless finish—similar to drywall repairs. Our contractor then applied an acrylic resurfacer to the courts to provide base texture and adhesion, followed by multiple color coats. Once the surfacing was done new court lines were put down.

With the surfacing and striping work complete, the courts were opened for play Friday afternoon, May 9th.



PICNIC SHELTER

The long-awaited picnic shelter was installed Thursday, August 14. This heavy timber-style pavilion is a key finishing touch to the project. One existing picnic table was repurposed and modified for wheelchair accessibility, and a new ADA-compliant concrete picnic table was added. The shelter—similar in size to the original—now has four tables, two of which are wheelchair accessible.

With the picnic shelter installed, it is time for Public Works crews to complete the remaining work elements. Crews have started to replant the disturbed areas, including four new trees and spreading bark dust.



FINISHING TOUCHES

Even though all the large elements of this improvement project are done, Park staff still have more to do. The carved panels depicting Native American graphics will be reinstalled as wind breaks along the concrete walkway to the new picnic shelter and restroom facility. The horseshoe pits will be reinstalled with new back boards and final landscape updates will be completed.



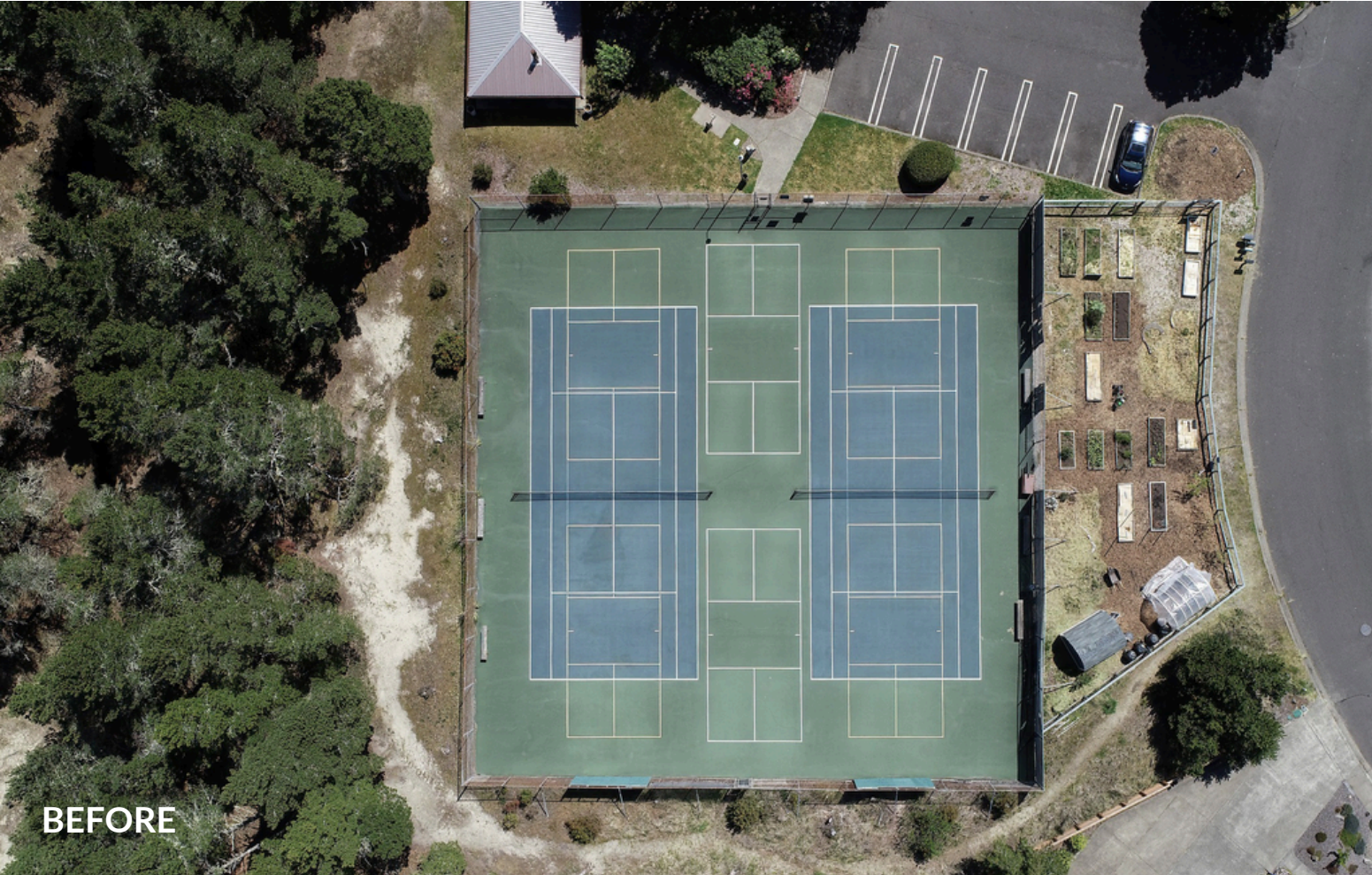
From beginning to end this project was a test of our patience and a labor of love. We could not have completed this project without our Contractors Ray Wells, Oregon Fence Company, CXT, Inc., Geosciences Management International, Dougherty Landscape Architects (DLA, Inc), Lighthouse Electric, and Tennis Surfacing & Maintenance.

Thank you to all the Public Works staff, especially our Park's staff, without them this project would not have been possible. We threw a lot of large projects at our Park staff this year. Not only the Rolling Dunes Park improvement project but the Siuslaw Estuary Trail and gazebo replacement in Old Town Park as well. Our Park's staff said they learned a lot of new skills with these projects. We can't wait to see how they use these new skills on future park improvements.

Thank you to the Oregon Parks and Recreation Department for the National Park Service Land & Water Conservation Grant to help fund the project.

Lastly a big thank you to the citizens of Florence for their patience while we worked hard to update and revitalize Rolling Dunes Park to better serve our community.







BEFORE



AFTER