

City of Florence
Public Art Committee
Florence Events Center
715 Quince Street
Florence, OR 97439
541-997-3437
www.ci.florence.or.us

May 14, 2018

AGENDA

10:00 a.m.

Members:	Harlen Springer, Chairperson	Susan Tive, Vice-Chairperson
	Jane Rincon, Member	Jo Beaudreau, Member
	Ron Hildenbrand, Member	Jennifer French, Member
	Jayne Smoley, Member	
	Joshua Greene, Council Ex-Officio Member	Kelli Weese, Staff Ex-Officio Member

With 48 hour prior notice, an interpreter and/or TDY: 541-997-3437, can be provided for the hearing impaired.
Meeting is wheelchair accessible.

CALL TO ORDER – ROLL CALL

10:00 a.m.

1. APPROVAL OF AGENDA

2. PUBLIC COMMENTS

This is an opportunity for members of the audience to bring to the Public Art Committee's attention any item not otherwise listed on the Agenda. Comments will be limited to a maximum time of 15 minutes for all items.

ACTION & REPORT ITEMS

The Public will have an opportunity to offer comments on action items after the Public Art Committee Sub-Committees have given their report.

3. SIUSLAW BRIDGE STEPS

Review the recommended selections from the Siuslaw Bridge Steps selection committee; select final artist to submit to the Oregon Department of Transportation (ODOT) / perform additional background checks; and discuss an overview of progress.

*Approx.
10:00 a.m.*

4. ART EXPOSED

Review timetable for installation and photo-ops of two sculptures this week (May 14). Make final decision on Maple Street sculpture from recommendation of Sub-Committee. Review timetable for installation and photo-ops for three remaining locations during the week

*Approx.
10:50 a.m.*

REPORT ITEMS

5. PROJECT TEAM PROGRESS

- | | |
|--|-----------------------|
| • Funding | • Hwy 101 & 126 Mural |
| • Take One / Leave One Program | • Trash Cans |
| • Marketing – | • Mural Code Project |
| ○ June Siuslaw News Update | • Timelines Overview |
| ○ Spring / Summer 2018 Art Passport | • ReVision Florence |
| ○ May 29 th Rotary Presentation | • Donations |
| ○ September 7 th City Club Presentation | |

*Approx.
11:15 p.m.*

6. PUBLIC COMMENTS

This is an opportunity for members of the audience to bring to the Public Art Committee's attention any additional items. Comments will be limited to a maximum time of 15 minutes for all items.

*Approx.
12:45 p.m.*

7. NEXT MEETING DATE, FUTURE AGENDA TOPICS AND HOMEWORK

- Review upcoming meeting dates/times
 - May 23, 2018 – Florence Urban Renewal Agency Meeting
 - June 18, 2018 – Public Art Committee Meeting

*Approx.
12:50 p.m.*

From: jasso-thomas@charter.net
To: [Kelli Weese](#)
Subject: RE: [Public Art Committee Distribution List] Public Art Committee Meeting
Date: Friday, May 11, 2018 2:49:16 PM

Great!.....that with regard to our local Florence Area Garden Club - somehow to be asked our opinions pertaining to the parks and changes or art incorporation, signage - that we have for so many years given our love of care, plantings, weeding made to feel inclusive in the decisions that bring changes to the parks, flora, signage, art, etc. Many of us are now physically challenged, older, don't drive and even do not have much energy to keep attending town meetings.....it just would be so nice to give tribute back to those who are now gone, who are current and still w us to acknowledge this wonderful group of women and now men as well.....I am asking for those who have gone before me - I have lived in this community for over 30 plus years as member of FAGC early on and learned much of community volunteerism through FAGC and maintaining the beauty of Florence, civic duty and then later offering scholarships, too!....I just do not want the legacy of those who have gone before me/us in the FAGC to have been in vain....it changed my life here in town. I am a past Park and Rec commissioner and represented the FAGC at that time....perhaps in the Fall some one from the group below would be interested in coming as a guest to the FAGC for our luncheon....thanks for your time.....lynda jasso-thomas, d.ed.

From: "Kelli Weese"
To: "jasso-thomas@charter.net"
Cc:
Sent: Friday May 11 2018 1:53:10PM
Subject: RE: [Public Art Committee Distribution List] Public Art Committee Meeting

Absolutely, please feel free to send me an email with your comments and I will forward them on to the committee at the meeting on Monday. - Kelli

From: jasso-thomas@charter.net <jasso-thomas@charter.net>
Sent: Friday, May 11, 2018 1:51 PM
To: Kelli Weese <kelli.weese@ci.florence.or.us>
Subject: RE: [Public Art Committee Distribution List] Public Art Committee Meeting

KW - is there a way to make a public comment in absentia for the FPAC upcoming meeting? Please let me know thanks....lynda jasso-thomas,d.ed.

From: "Kelli Weese - City Recorder"
To: jasso-thomas@charter.net
Cc:
Sent: Friday May 11 2018 12:01:30PM
Subject: [Public Art Committee Distribution List] Public Art Committee Meeting

Good Morning Everyone,

The meeting agenda for the May 14, 2018 Florence Public Art Committee meeting has been uploaded to the City of Florence website. For access to this information please follow the links below.

For more information about the upcoming meeting, or the Public Art Committee in general, please feel free to contact City Recorder / Economic Development Coordinator [Kelli Weese](#).

Thank you and have a great day!

Kelli Weese

[Public Art Committee Meeting](#)

Calendar Date:

Monday, May 14, 2018 - 10:00am

To sign up for the committee distribution list please [Click Here](#). For information about the City of Florence's public art program, please [Click Here](#).

Meeting Information

Agenda:

[5.14.18 Public Art Committee Meeting Agenda](#) (29 KB)

Directions

Florence Event Center
715 Quince Street

Florence,
OR
97439

See map: [Google Maps](#)
Oregon

[Unsubscribe from this newsletter](#)

Siuslaw Bridge Steps Selection Update

On May 2 the five member jury met to score the top 9 finalists who submitted proposals to do an art installation on the steps. The finalists were determined by all those submissions that scored a 4 or higher in the first round of scoring. Each juror had already scored the first round of 23 submissions online through CAFÉ.

After a two hour process in which we went through each submission and discussed it we scored each one again to determine the top four. We then did a voice vote to determine if there was consensus on a first, second and third place submission. As there was no clear frontrunner the jury decided to recommend the top three projects and one alternate to the PAC for its final selection of the project and artist.

These three artists and their submission in no particular order are:

Jennifer Kuhns

Allison McClay

Jessilyn Brinkerhoff

The alternate is Melissa Cole

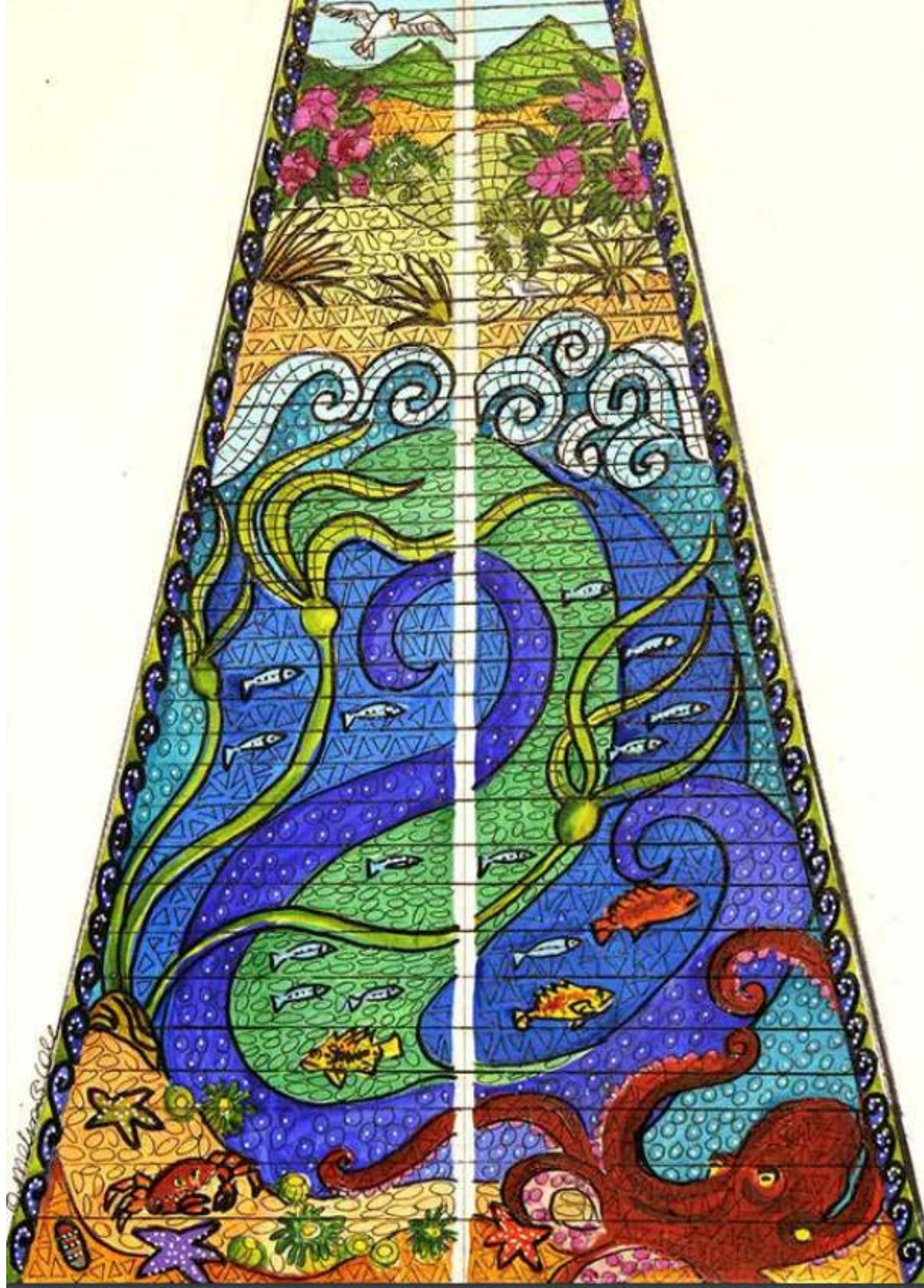
As we go through each of the submissions we will give you more background on each applicant and answer questions. Please be reminded that after the PAC makes a final decision we must then go to ODOT for approval. We must also contact the artist as soon as possible to determine if they are available and to work out any outstanding issues or questions we have about their submission.

The Bridge Steps Selection Committee is: Mike Schwartz, Nancy Archer, Dan Lofy, Jo Beaudreau and Susan Tive

Our community volunteers did a great job reviewing and evaluating the submissions, we thank them for their time and effort and hope they will continue to stay involved in this and other PAC projects.

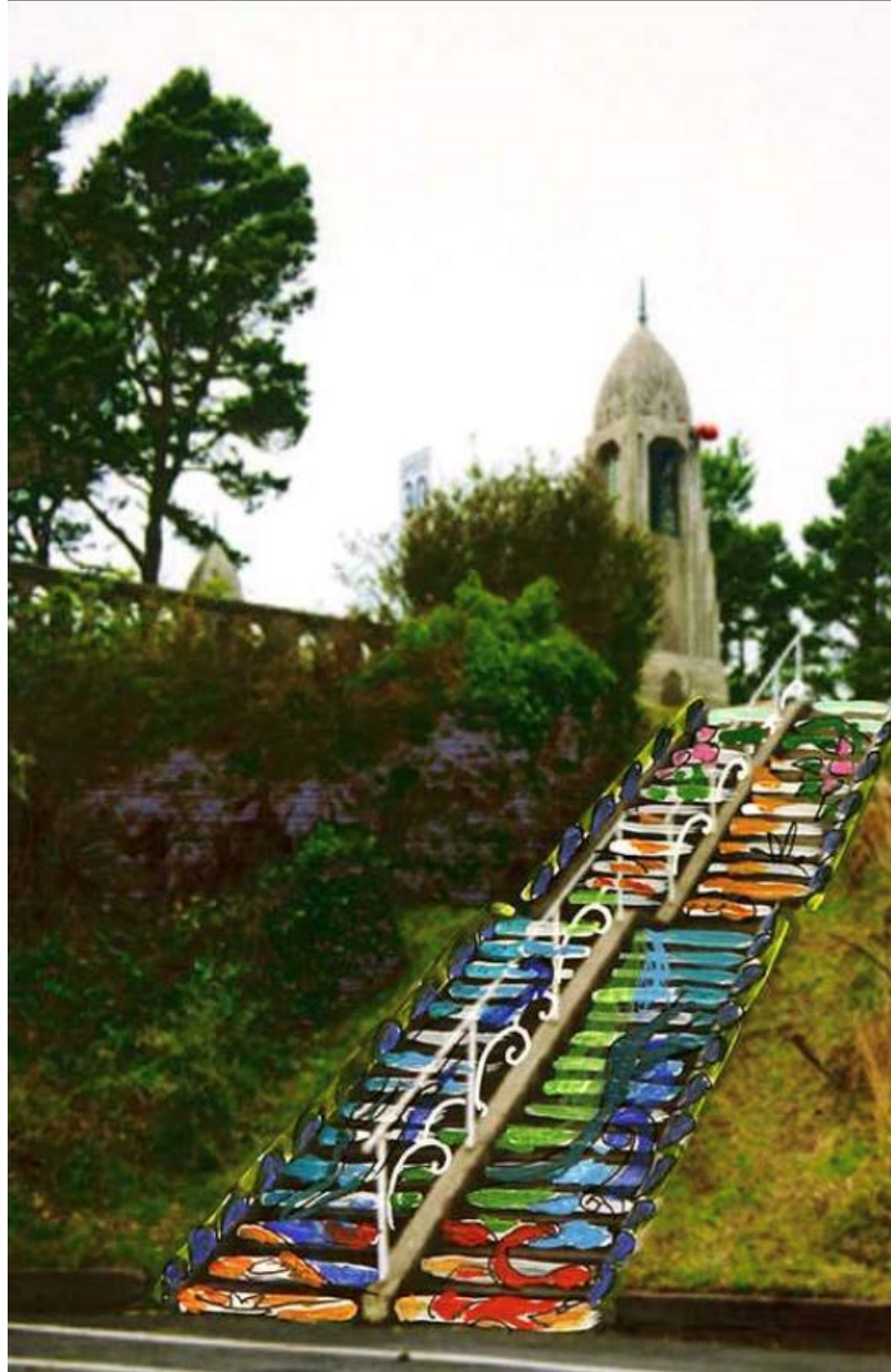
Artist

Melissa Cole



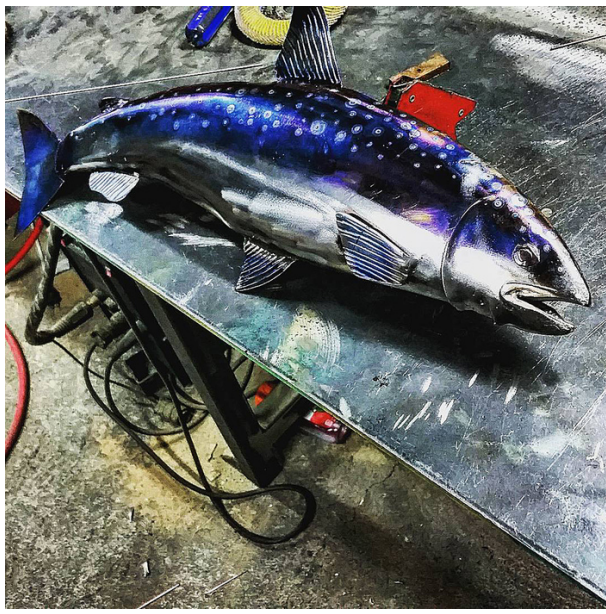
Cole



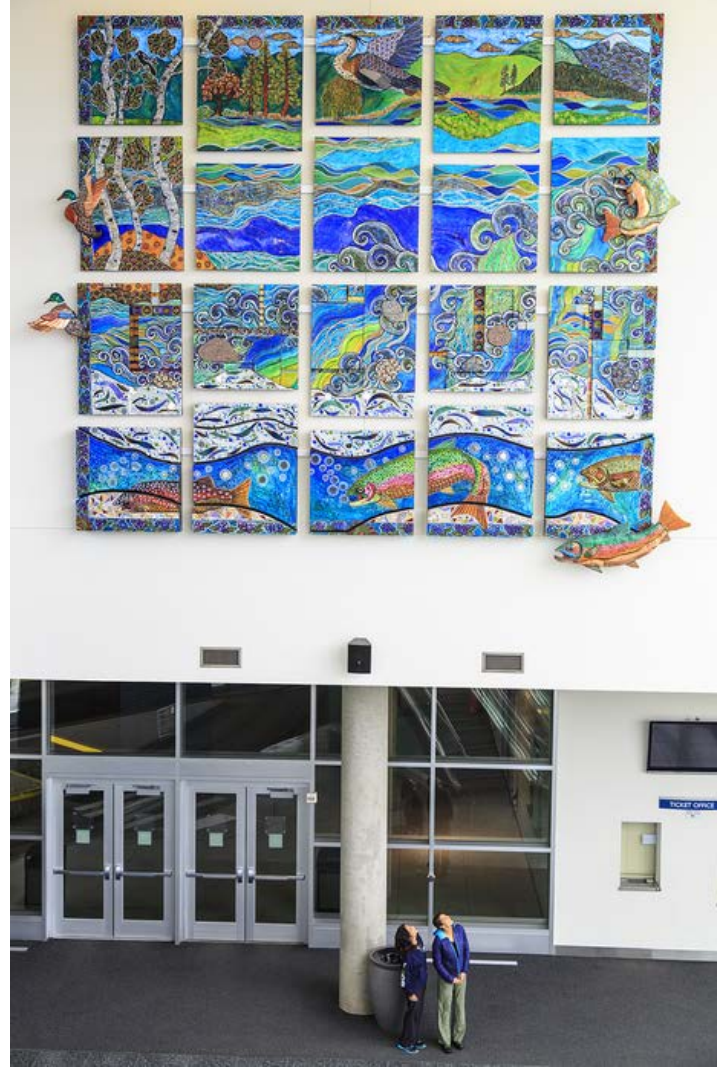


Cole

Cole Art Examples

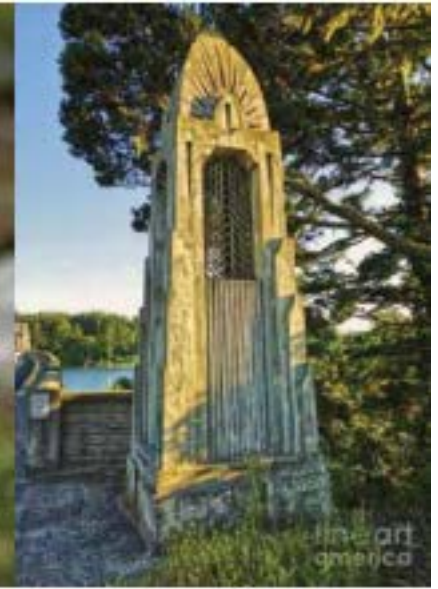


Cole Art Examples



Artist

Jessilyn Brinkerhoff



Brinkerhoff

MURAL CONCEPT A

Symmetrical design of Art Deco Rhododendrons and motifs in primary colors referenced from bridge and Art Deco movement. Fabricated metal tower lights complement the motifs.



Art Deco Reference Images



**TOWER LIGHT
EXAMPLE:**
Plasma Cut and
welded steel
Deco design to be
determined

**STAIR RAILING
INSERTS**



**POSSIBLE ART DECO
RAILING INSERT DESIGN:**
Plasma Cut and
welded steel

Brinkerhoff

SIUSLAW BRIDGE STEPS ART INSTALLATION
JESSILYN BRINKERHOFF 2017
JESSILYN@WILDCLOUDCREATIVE.COM



MURAL CONCEPT B

Rhododendrons on blue, possibility of wildlife or pollinators hidden throughout. These characters could be visible only from specific angles such as the top of stairs looking down or from the bottom of stairs looking up.

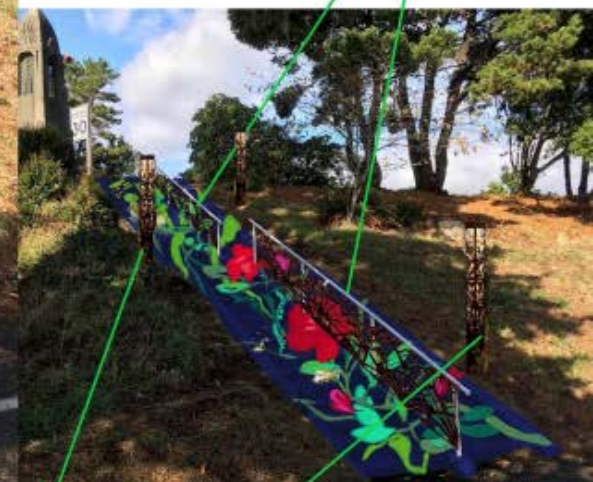
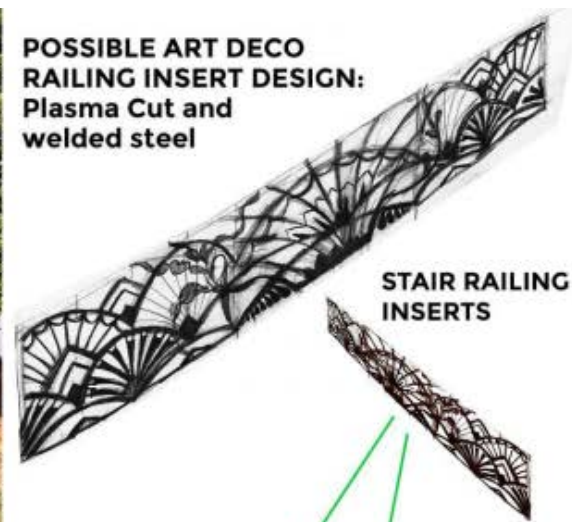
POSSIBLE ART DECO
RAILING INSERT DESIGN:
Plasma Cut and
welded steel



TOWER LIGHT
EXAMPLE:
Plasma Cut and welded steel
Deco design to be determined



SIUSLAW BRIDGE STEPS ART INSTALLATION
JESSILYN BRINKERHOFF 2017
JESSILYN@WILDCLOUDCREATIVE.COM



**TOWER LIGHT
EXAMPLE:**
Plasma Cut and welded steel
Deco design to be determined



MURAL CONCEPT C
LAND to SEA
Local fish and kelp
botanicals at top of stairs
transition into rhododendrons
and pollinators at bottom.
Fabricated metal stair inserts
and tower lights complement
the motifs.

SIUSLAW BRIDGE STEPS ART INSTALLATION
JESSILYN BRINKERHOFF 2017
JESSILYN@WILDCLOUDCREATIVE.COM

Brinkerhoff Art Examples

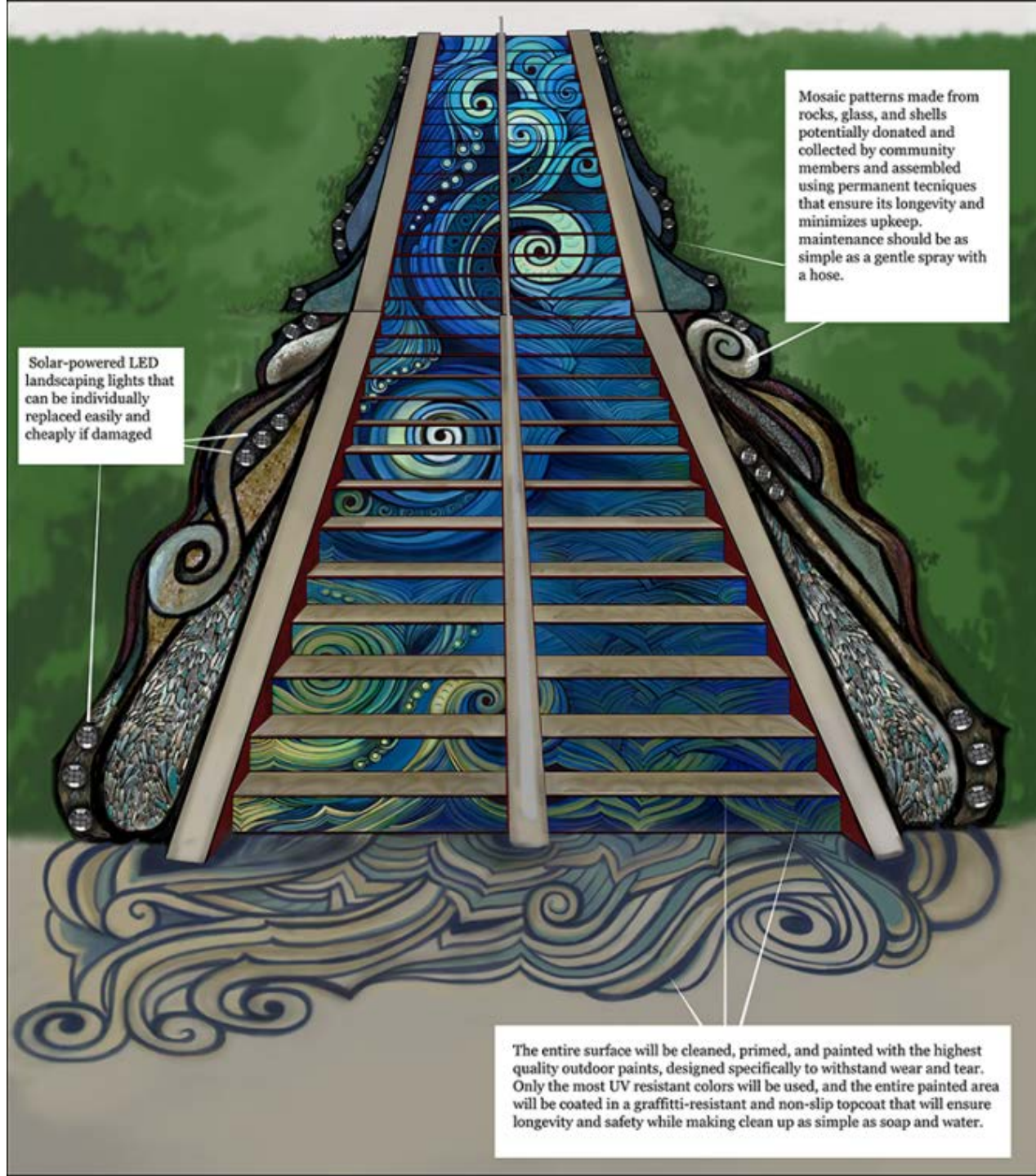


Brinkerhoff Art Examples



Artist

Allison McClay



Mosaic patterns made from rocks, glass, and shells potentially donated and collected by community members and assembled using permanent techniques that ensure its longevity and minimizes upkeep. maintenance should be as simple as a gentle spray with a hose.

Solar-powered LED landscaping lights that can be individually replaced easily and cheaply if damaged

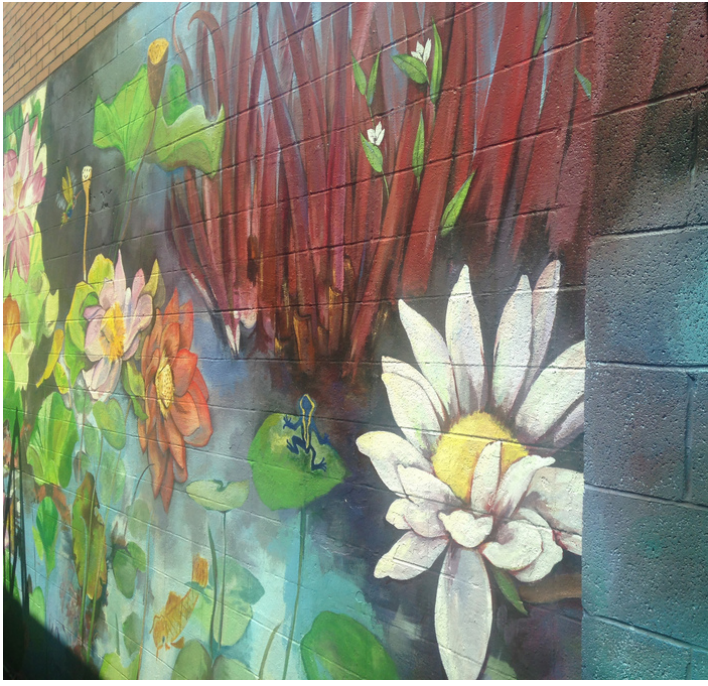
The entire surface will be cleaned, primed, and painted with the highest quality outdoor paints, designed specifically to withstand wear and tear. Only the most UV resistant colors will be used, and the entire painted area will be coated in a graffiti-resistant and non-slip topcoat that will ensure longevity and safety while making clean up as simple as soap and water.



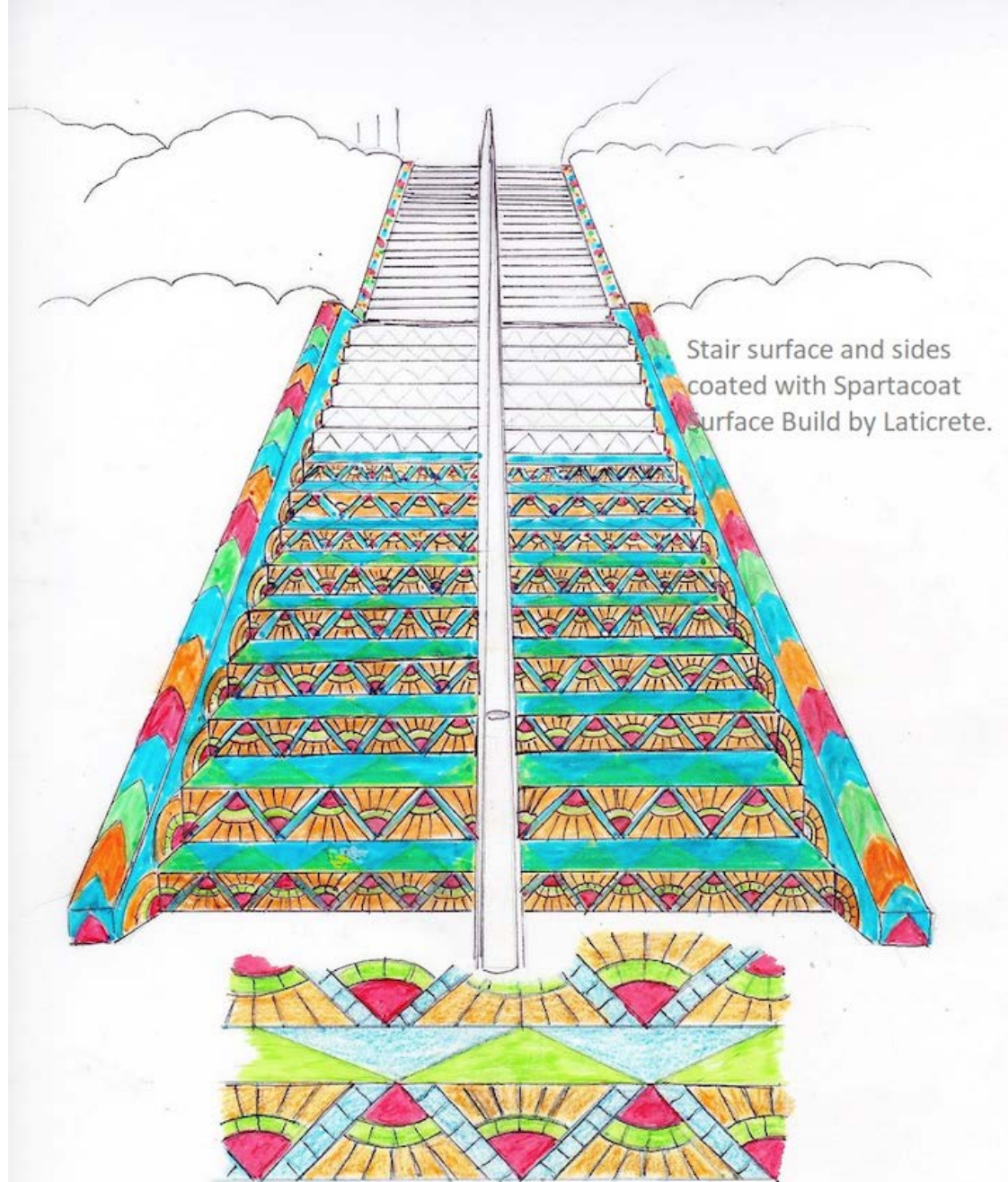


McClay

McClay Art Examples



Artist
Jennifer Kuhns



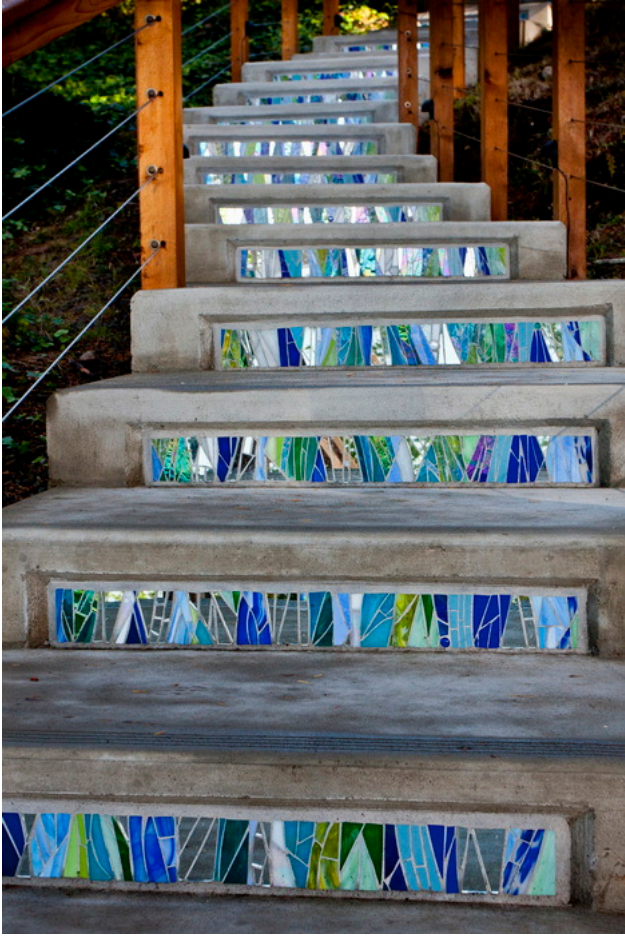
Stair surface and sides
coated with Spartacoat
Surface Build by Laticrete.

Kuhns

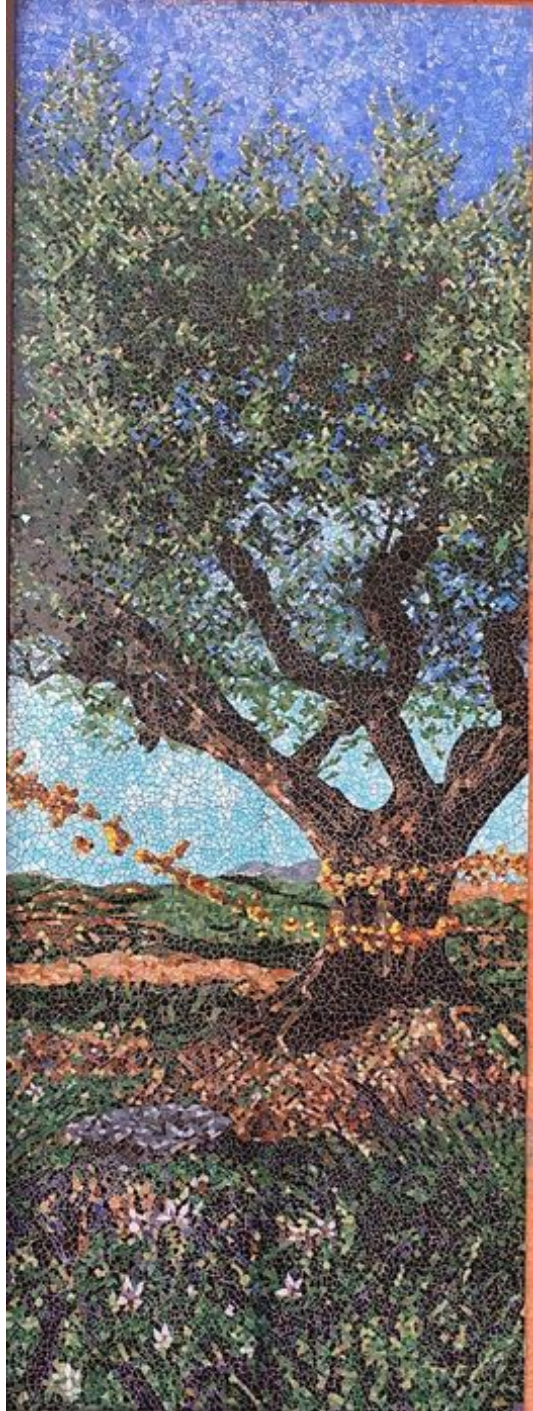
Risers embellished with stained glass mosaic in Art Deco
pattern reminiscent of designs in bridge obelisks.



Kuhns



Kuhns Art Examples



Melissa Cole
4917 N Boeing Road
Spokane, WA 99206
cell (509) 496-1029
sirenagraphics@hotmail.com
www.melissacole.com

Cole was born in Oregon and raised in London, Hong Kong, and India. She graduated from Oregon State University with a degree in Zoology and spent time as a naturalist guide in Mexico and the Caribbean. It is from these amazing encounters that she derives much of her inspiration for her vividly colored, heavily textured and patterned paintings and mosaic sculptures.

She's written over 30 children's books and travels extensively with her marine photographer husband. Melissa has always created art, but has spent the last 18 years fully devoted to it. She is strongly influenced by ethnic patterns, which she sees in her travels abroad. Her mediums include: mixed-media and encaustic paintings, enameled metal, ceramic sculpture and hand-built concrete sculpture with glass mosaic. She has won international awards for her public works of art, including juror's choice award for *Confluence* at the Society of Mosaic Art's International Mosaic exhibition in 2015.

Melissa has had extensive training and experience as a teaching artist through Arts Impact of Seattle, the Seattle Museum of Art, The Northwest Museum of Arts and Culture, The WA State Arts Commission's Teaching Artist Training Program (TAT Lab) at the Seattle Repertory Theater and through Spokane Public School's Professional Development Program.

In February 2017, she was a guest instructor for HAPI (Haitian Artists for Peace International) where she worked with a community artist coop to create a large mural mosaic for Mizak Maternity Center in Mizak, Haiti. In 2015 she won a 1% for Art project to create work for Aurora Elementary school in Anchorage Alaska where she involved over 250 students in the process. In 2013, she worked as a lead artist with Laurel True in La Fortuna, Costa Rica to realize a community based mosaic with the Global Mosaic Project. Her current project at the Moscow, ID Public Library is titled "Inspiration and Pollination" and highlights native flora and pollinator species in glass mosaic along the exterior walls of the library. Over 130 community members will participate in fabrication of portions of the mural mosaic.

Beginning in 2015, Melissa was an educational speaker for Artist Trust's "Artist Trust at Large" two-year program in Eastern WA. She has been a guest lecturer at numerous events ranging from national conventions to interpretive museum programs.

Her creations are showcased in national galleries, corporate and private collections, aquariums, hospitals, museums, and numerous public places worldwide.

Melissa S. Cole
4917 N. Boeing Road
Spokane Valley, WA 99206
E-mail: sirenagraphics@hotmail.com
Web: (fine art) www.melissacole.com
(public art) www.melissacolestudios.com

EDUCATION

BS Degree in Zoology, with electives in sculpture, figure drawing and painting,
Oregon State University, Corvallis, OR

PUBLIC WORKS, COMMISSIONS AND COLLECTIONS

- 2017 *Inspiration and Pollination*, 4x35 foot mural mosaic, Moscow Public Library 1% for Art Project, Moscow ID (in progress)
- 2017 *Belly Full of Salmon*, 22x48 inch mixed media on fiberglass orca sculpture for the Orcas on Parade public art project, Richmond Beach, WA
- 2017 *Mizak Tree of Life*, 12x8 foot tall tree of life design for Mizak Maternity Center, textured acrylic and glass mosaic, incorporated community built mosaics, Mizak, Haiti
- 2016 *Pink Salmon Frenzy Returns*, 24x48 inch mixed media mosaic painting commissioned by Teaselwood Designs for their corporate boardroom, Syracuse NY
- 2016 *Home Stretch*, 48 x 60 inch mixed media painting commissioned by Enduris Corporation for their entryway lobby, Spokane WA
- 2016 Five paintings purchased by the Bonneville Power Administration for their permanent collection, Mead WA
- 2015 *Wild Aurora*, 23 mixed media 48 x 60 inch panels showcasing native wildlife, commissioned by Aurora Elementary School for a "1% for Art" Project, Anchorage, AK
- 2015 *Shared Connections*, 20 foot tall freestanding steel and mosaic tree sculpture, commissioned by the Sister Cities Sculptural Garden Project, Spokane WA (in progress)
- 2015 *On Golden Pond*, *Birchwood Bear* and *Electric Kokanee*, reproduction on vinyl wraps for electric boxes, commissioned by the Coeur d' Alene Art Commission, Coeur d' Alene, ID
- 2015 Over 100 private commissions completed to date in acrylic, watercolor, concrete and raku sculpture, for clients in USA (AK, CA, FL, GA, HI, OR, VA, WA), Japan, France, Ireland, Mexico & UK
- 2014 *Turquoise Days*, *Amber Nights*, 24 x 48 inch mixed media painting, purchased for the Kent City Hall's permanent collection, winner of People's choice award, Kent, WA
- 2014 *Water Dragon*, 48 inch long mixed media on fiberglass 3D salmon sculpture, purchased by the Heathman Hotel from the Kirkland Fish Frolic Event, Kirkland, WA
- 2014 *Lotus Dawn*, 40 x 60 inch acrylic painting, purchased by Seattle Cancer Care Alliance, Seattle, WA
- 2014 *Ruby Nights*, mural mosaic of 18 life-sized dance and performance figures and a 25 x 40 foot reproduction on vinyl of *Dancing Among Stars and Rubies* for the entry way and parking garage of Ruby 2 Hotel, Spokane, WA
- 2014 *Blue Dog*, 4 foot tall freestanding memorial concrete dog sculpture with glass mosaic, commissioned by Thinking Cap Design, Spokane, WA
- 2013 *Onward and Upward*, mural mosaic with 3D concrete elements, created utilizing community involvement, Jacklin Arts and Culture Center, Post Falls, ID
- 2013 *Something's Fishy*, concrete sculptures with glass mosaic of native fish on and beside a 4 x 6 foot wall, commissioned by the Urban Renewal Agency and Downtown Lewiston Association, Lewiston, ID

- 2012 *Confluence of the Snake and Clearwater*, more than 150 pieces of double-sided concrete sculptures with glass mosaic installed on 200 foot long pedestrian bridge, Lewiston, ID
- 2012 *La Selva*, 8 x 40 foot community built mosaic mural in conjunction with the Global Mosaic Project, Centro de Salud, La Fortuna, COSTA RICA
- 2011 *Riverdance*, 22 x 24 foot mixed media interior installation for the Spokane Convention Center, commissioned by the Public Facilities Department. Spokane, WA
- 2010 *Balazs, Big River, and Manito*, led at-risk youth in the creation of 5 murals each sized at 12 x 110 feet in downtown Spokane, WA, commissioned by the Spokane Arts Commission, Spokane, WA
- 2010 30 artworks commissioned by The Children's Clinic, Tualatin, OR
- 2009 *Big Koi Pond*, 40 x 60 inch acrylic painting, purchased by Univ. of WA Medical Center, Seattle, WA
- 2005 Numerous paintings commissioned for the Seattle Aquarium's Collection, Seattle, WA
- 2003 *Salmon Mousse*, painted life-size fiberglass moose for Excell School Foundation's "No Moose Left Behind" project, Coeur d' Alene, ID
- 2001 *Cosmic Trout*, 5 x 8 foot wall mural, acrylic on curved board, commissioned by River Park Square, Spokane, WA
- 1991 Community project creating educational murals for schools, US Peace Corps, Dominican Republic

EXHIBITIONS

- 2017 Artxchange Gallery, one person show, August 7-September 30, Seattle, WA
- 2017 Northwest Museum of Arts and Culture, two person exhibit with Ric Gendron, *Life/Stories*, June 9-September 9, Spokane, WA

PUBLISHED

Professional Artist Magazine, Artist Spotlight feature, December/January 2016

Artsy Shark Online Magazine, interior feature titled *Women and Art*, December 2016

Alaska Beyond Magazine, feature article about my work in the Spokane section. (February, 2016)

Blackbirch-Gale Group Publishing, author of 30 children's nature books

AWARDS

- 2017 Spokane City Art Award for Imagination
- 2014 Juror's choice Award by judge Julio Menossi at the International Mosaic Exhibition in Houston, TX for *Confluence* public work.
- 2014 People's choice Award for *Turquoise Days, Amber Nights*, at the Kent City Hall Purchase Award Exhibit

RELATED EXPERIENCES

- 2017 Art Consultant for HAPI (Haitian Artists for Peace International)

- 2011 Arts Impact, Arts and Literacy Mentor Program, Seattle Art Museum, Seattle, WA

Participation in various technical workshops and residencies: mosaic, cement sculpture, fused glass, encaustics and enameled metal, given by the Institute of Mosaic Art in Oakland CA, the Seattle Mosaic Institute in Seattle WA, Sherri Warner Hunter Studio in Bell Buckle TN, Laurel True of the Global Mosaic Project in La Fortuna, Costa Rica, Harold Balazs Studio in Spokane WA, John Killmaster Studio in Boise ID, Alicia Tormey in Seattle, WA

Allison McClay
allisonmcclay.com
allileona@gmail.com
(503)789-0995

I received a BFA in Illustration from California College of the Arts in 2007. Since then, I've moved back to Portland, where I showed work with local galleries for a few years before starting a small business doing murals, portraits, logos, signs and illustrations.

In 2016 I designed logos and posters for local businesses, had a cover illustration published for Flyleaf Journal, and painted 50 pages of rare birds that were published this year in *Feather Craft; The Amazing Birds and Feathers Used in Classic Salmon Flies* by Kevin W. Erickson.

In 2013 I worked as an assistant on my first public mural, funded by Portland's Regional Arts and Culture Council. The artist, Larry Kangas, hired me for several mural projects and taught me a lot about his trade until his death later that year. In 2014 I worked with Larry's wife Sandy Kangas to finish a mural that he started for Holistic Health Center in Beaverton, funded by the Beaverton Arts Program. From there I began to find regular work doing murals and signs, and created several public murals for local businesses in Portland. I also worked for the artist Liz Harris in 2015 on a large mural in Southeast Portland, funded by the PDC. In 2016 I completed my largest project to date: A group of six historically themed murals, totalling over 8,000 square feet, for the city of North Plains, Oregon. The city has since hired me to paint two more large public murals, as well as an update of their Garlic Festival sign on Highway 26.

I have painted a wide variety of sizes, styles and surfaces, from 20 foot high corrugated galvanized steel to 120 year old brick. I've used rolling scaffolding, scissor lifts, and all kinds of materials. I love the challenge and specificity of each unique project, and I feel confident that I have the experience and flexibility to create a piece of art that engages with and enriches its environment. I've gained so much valuable experience working with talented artists, and am now in a place where I can provide knowledge and experience to others.

I am especially interested in projects that have an element of community involvement, and feel confident in my ability to lead a project and work together with children and community members to create something really special.

Allison McClay
allisonmcclay.com
5806 North Wilbur Ave, Portland, OR, 97217
(503)789-0995
allileona@gmail.com

Education

2007 BFA in Illustration, California College of the Arts, San Francisco, CA

Professional Experience

- 2016-17 Worked with the city of North Plains, Oregon, as the lead artist on 8 different public murals and a highway sign. Projects involved working with business owners and community members, hiring assistants, using scaffolding, lifts, and various machinery, and working with challenging surfaces such as ancient brick and corrugated galvanized steel.
- 2012-17 Worked as a mural artist and mural assistant in Portland and Beaverton, leading a project for the Beaverton Arts Commission, and assisting on projects with the Portland Development Commission and the Regional Arts and Cultural Council.

Published Work

- 2017 Illustrated "Feather Craft: The Amazing Birds and Feathers Used in Classic Salmon Flies" by Kevin W. Erickson, published by Stackpole Books.
- 2016 Illustrated the September cover of Flyleaf Journal, "On the Way to Grandmother's House" by Genevieve Mills.

Commissions and Clients

- 2008-17 Worked as a freelance illustrator and mural painter for private commissions and businesses including: Performance Mobility Wheelchair Vans, Tapalaya and Mekha restaurants, Wooptido Salon, My Vice Catering, Raleigh Hills Assisted Living in Portland, Mickleberry Gardens in Gresham, Springtime Farms in Bellingham, Wheatland Village retirement homes in Walla Walla, Holistic Health Clinic in Beaverton, and Wouldboards Skateboards and Apparel in Vancouver BC.

Gallery Shows

- 2005-17 Showed work in various galleries and venues around Portland, including: Milepost 5, Gallery 114, Onda Gallery, Gallery Zero, Olympic Mills Commerce Center, St. Josef's Winery, Radio Room, Dragontree Spa, Portal Gallery, Soma Artspace, Beaulahland, Bare Bones, Launchpad Gallery, and Bunk Bar.

Jessilyn Brinkerhoff | Biography

Siuslaw Bridge Steps Art Installation RFP

Jessilyn's dynamic compositions tell stories that are urban and rural, of natural and social history, wild species, forgotten peoples, lost spaces and optimistic futures where humans and the environment have come to balance. A female artist of culturally and environmentally aware perspectives, her works are thoughtfully designed with much research behind them and a signature contemporary use of color.

After creating public artworks for over 10 years, Jessilyn is passionate in her aim to integrate nature and art within our cities. She believes that public art brings hope and beauty to a grey concrete world and draws communities together to work on a visionary project for the whole. Having produced over 25 murals, she is committed to creating custom artwork that reflects a community's culture, values, history and future vision for itself.

After receiving her art and design degree from the University of Oregon, she has continued in city public art commissions incorporating large imagery of mural painting while pushing the medium to include sculptural elements in metal, ceramic and wood. Her roles have included project manager, lead designer and installer. During her two largest commissions, she spent four months meeting with stakeholders, historians and native tribes to gather design feedback. This complex process of multiple site visits, choosing sites and acquiring historical documents was enriching for everyone involved leading to a design that reflected the city from past to future.

Over time Jessilyn has expanded her public works into three dimensions bringing a new tactile experience and innovative edge. In the past several years she has worked in ceramic, plasma cut metal, cast metal and wood, while subcontracting engineering details to experts for superior integrity of the design.

She has used NovaColor paints for over 10 years while facing many technical challenges requiring the use of scaffolding, lifts and unexpected weather conditions in outdoor environments. The final step of mural painting is to apply a UV sealer or anti-graffiti sealer. Properly handled, residue and graffiti can be removed without disturbing the art beneath. Jessilyn's maintenance plan documents ensure works last at least 25-30 years.

JESSILYN BRINKERHOFF | RESUME

541-218-9542 | jessilyn@wildcloudcreative.com

Eugene, Oregon

Portfolio: wildcloudcreative.com | [instagram.com/jessilynbrinkerhoff](https://www.instagram.com/jessilynbrinkerhoff)

Experience Summary

Ten years of coordinating and creating large scale commissioned murals and public art projects.

Education

University of Oregon, Eugene, Oregon, 2011

Bachelor of Arts in Fine Art

Bachelor of Arts in Design and Material Studies

Rogue Community College, Medford, Oregon, 2008

Graphic Design/Media Arts Studies

Experience

Illinois Valley Library Public Art Sculpture Commission, Cave Junction, OR, 2017

Designed and installed wood and metal sculpture in hand cut and hammered copper and steel

Tells the story of abstract forest in finished wood and sculptured leaves, insects, animals, flowers in a windy autumn composition

Prairie Line Trail History Mural/Sculpture Commission, City of Tacoma, Washington, 2017

Commissioned to design and install mural using source documents and images from the urban development history of Tacoma. Installation was completed on a 200 foot by 60 foot wall in paint and plasma cut metal

The Prairie Line Trail is a historical route running through downtown Tacoma. With source materials available from the historical society and the native Puyallup tribe, this piece was a research driven design featuring local stories in Tacoma's history. Stories depicted in the design include the Prairie Line Railroad as the economic driver for the city, European settlement, native Puyallup tribe relationship with landscape and finally metaphors for new growth and unity between citizens of the city

Eugene Public Library Outdoor Art Piano Commission, Eugene, OR, 2017

Painted an outdoor piano to serve as a playable art piece in downtown Eugene.

Design features native plants of Indian Paintbrush, Lupine and Maidenfern in vivid colors painted onto blue and gold book pages.

Featured Artist: Art Along the Rogue Street Mural Painting Festival, Grants Pass, OR, 2016

Commissioned to design and complete a traditional madonnari street painting of 12'x19' for yearly event, telling the story of historical legends according to the theme

Live street painting festival of 50 artists in Southern Oregon, each artist given a mural space of asphalt to complete in two days

Eugene Springfield Public Art Project, Featured Artist, Springfield, OR, 2017, 2016

Commissioned to design and complete a public art mural for the city of Springfield featuring the storytelling of stream habitat and river species
Live street painting festival of artists in Lane County

Lane Arts Council: Mural Artist Resident, Lane County, OR 2014-present

Completing mural paintings with providing educational workshops and classes in design, painting and drawing in Lane County
Directing collaborative public arts projects among students
Coordinate exhibitions of completed work in art and design

City of Medford Public Art Contract for Mural & Sculpture Commission, Medford, OR 2015

Commissioned to design and execute public art mural proposal for six 30 foot concrete pillars under Interstate-5 in downtown Medford's Hawthorne Park

The Wildlife Calendar Walk Mural features one native species for each month in Southern Oregon, painted in acrylic with installation of ceramic sculptural features (see portfolio images)
Worked with City Art Committee and the Oregon Department of Transportation to complete logistics for my painted mural design including graffiti prevention, lighting and landscaping design to complement

Outreach and collaboration with local youth art groups and non-profits

Muralist, Ecomurals, Pacific Northwest, 2015

Muralist and designer at Ecomurals Northwest mural painting business
Support painting in schools, City of Eugene, Oregon businesses, Ecotourism organizations in Costa Rica

Wild Cloud Creative Independent Artist and Designer, Eugene, OR, 2011-present

Offering art and visual communication services to serve cities, community groups, grassroots organizations and schools

Clients include the City of Medford, City of Grants Pass, Palo Alto Software, Thriving Changemaker Summit, Natural Flow Sustainable Education, Northwest Institute for Community Enrichment, Josephine County School District, Lane County School District, Americorps

SKILLS

Latex Mural Painting for Exterior/interior, Pillars, Streets and Weatherproofing of Artwork
Wood, Metal, Ceramic Sculpture and Installation for Public Art
Graphic Design and Lettering Typography
Large Format Fine Art Drawing, Painting, Illustration
Organization and Professionalism
Verbal and Visual Communication, Art Direction

541-291-7469 | lucas.brinkerhoff@gmail.com

PO Box 769, Merlin, OR 97532

Portfolio: see attached

Experience Summary: Freelance Sculptor, Builder and Fabricator

Education

University of Oregon, Eugene, OR, 2014

Bachelor of Science in Geological Sciences, Chemistry

Apprenticeships, Oregon, 2003-2009

Welding and metal fabrication

Building, wood construction and engineering designs

Luthier's apprentice

Experience

Construction/Fabrication:

Metal - Brackets, hinges, anchors, bracing, general welding, machining

Wood - Standard, log, and timberframe structures; furniture, beehives

Masonry - Concrete, block, tile, stone

Public Art:

Sculpture - Cast Aluminum, plasma cut steel, copper tubing structures for installation art

Painting - Acrylic, watercolor

Illustration - Ink, Pastel, Charcoal

Prairie Line Trail History Mural/Sculpture Commission, City of Tacoma, Washington, 2017

Sculpture and Fabrication Leader for large plasma cuttings with brackets

Converted drawings into CNC plasma works

Illinois Valley Library Public Art Sculpture Commission, Cave Junction, OR, 2017

Designed and installed wood and metal sculpture in hand cut and hammered copper and steel

Created all custom wood cuts for installation of tree sculpture, hand hammered metal works and patinas

Architectural Construction Leader, Merlin, OR 2015-2017

Lead builder of 50ft. custom timberframe building

Framing, truss construction, welding of custom steel brackets to join logs

City of Medford Public Art Commission, Medford, OR 2015

Sculpture Installation leader for ceramic beehive installation

Assisted with mural painting on 6 30 ft. beams

Assistant Mural Painter, Oregon, 2012- 2017

5 Years of experience assisting with design, layout, and completion of several large murals in two and three dimensions.

Mural Festivals: Springfield, OR and Art Along the Rogue, Southern OR 2010-2016

Contacts:

Ken Klumpp: Professional Metal Fabricator and Mentor 541.441.1212

Ray Miatke: Carpentry Builder 541.552.1665

Dean Davis: Proprietor PromiseLand Farms Builder 541.659.6055

Jennifer Kuhns

An only child, I grew up in rural Michigan, losing myself in acres of forest and in books. I was fascinated and awestruck by the natural world, and among my favorite ways to amuse myself were drawing and exploring the forests around my home.

I left Michigan after graduating high school, taking my babysitting and fast food earnings and moving to Olympia, where I was delighted to find mild winters, dramatic mountains, mossy trees, and that spooky mist that hangs down from the sky making trees into grey silhouettes in the morning. While attending The Evergreen State College, I gravitated toward cultural anthropology, political science and women's studies, using art to express and explore these concepts.

After graduating from college, I continued to make art as a hobby while working at various jobs, selling my work at shops and galleries. In the year 2000, my landlord repaired the floor in my bathroom, then gave me a box of scrap tile and suggested I do something creative to cover it. I was hooked.

Over the past 17+ years, I have been obsessed with learning everything I can about best practices in mosaic and tile installation. I've spent time assisting a professional tile setter in order to gain experience in underlayments, substrates, and correct use of thinset and grout. And I attend the annual American Mosaic Summit in addition to other mosaic workshops to learn about design concepts and setting techniques unique to mosaic.

I continue to learn and grow with mosaic, creating fine art panels and installations for homes, businesses and public places. My love and appreciation of mosaic as medium is ever-increasing, as it is so versatile. Mosaic is touchable, washable, durable, and it has a reflectiveness that makes it seem alive. My favorite experience is watching the reactions of viewers after I have completed an installation, seeing their excitement as they approach to touch the material, then step back to see how the image comes together, and overhearing remarks of surprise and delight.

Jennifer Kuhns, JK Mosaic, LLC

261 Porter Creek Rd. Elma, WA 98541 USA

STUDIO 360.482.8024 **WEB** www.jkmosaic.com **EMAIL** jennifer@jkmosaic.com

About the Artist: Jennifer Kuhns creates mosaic art and custom architectural installations for private, corporate, public art and museums. Celebrating nature and the human experience, her art is vibrant, luminous and embedded with a reverence for the natural world. The artist is committed to environmental sustainability, using reclaimed and recycled materials when possible.

PUBLIC & CORPORATE COMMISSIONS

- 2017 **South Kitsap Skatepark**, Port Orchard, WA – Mosaic panel insert
 South Capital Neighborhood Association, Olympia, WA – Metal banners
 City of Bellingham, Bellingham, WA – Sidewalk inlays/community mosaic (in progress)
 City of Olympia, Olympia, WA – Sidewalk inlay design
- 2016 **City of Olympia**, Olympia, WA – Three Traffic Boxes / vinyl designs
- 2015 **L'Occitane**, Walnut Creek, CA. Two story - Storefront mosaic mural
 L'Occitane, Canada, Banff, Alberta, CA. Decorative marble floor mosaic
 L'Occitane, Dallas Fort Worth Airport, TX. Stained glass mosaic mural
- 2014 **Washington State University** – Mosaic commencement mace for permanent collection
 L'Occitane, Decorative marble floor-mosaics in: 1) Charlotte, NC; 2) Staten Island, NY; 3) New York, NY; 4) Queens, NY; 5) Overland Park, KS; 6) Carmel, CA; 7) Prudential Center, Boston, MA; 8) Philadelphia Intl Airport, PA; 9) Chicago, IL. 10) Sarasota, FL.
 L'Occitane, Alpharetta, GA. Storefront mosaic mural
- 2013 **City of Auburn**, Auburn, WA. Community mosaic mural project with youth
 City of Astoria, Astoria, OR. Team member- *Garden of Surging Waves* mosaic, public art project with Lynn Adamo
- 2012 **City of Olympia**, Olympia, WA. Artesian Well- Public art project, community mosaic project with over 200 participants
 Madison Elementary, Olympia, WA. Concrete sculpture with mosaic inlay
- 2011 **Federal Way Senior Center**, Federal Way, WA, Exterior back-lit mosaic
- 2010 **Olympia Pediatrics Medical Clinic**, Olympia, WA. Mosaic clinic entrance
 Federal Way Senior Center, Federal Way, WA. Exterior mosaic mural
- 2009 **Lawton Elementary School, Seattle, WA.** Interior mosaic mural installation
- 2008 **Cascadia Grill**, Olympia, WA. Interior architectural feature
- 2007 **City of Olympia**, WA. Cover Competition Artist - Spring Arts Walk
 Swing Wine Bar, Olympia, WA. Mosaic signage and interior architectural features
- 2006 **Cielo Blu/Capitale**, Olympia, WA. Mosaic interior architectural features
- 2005 **The Evergreen State College**, Olympia, WA. Mosaic memorial installation.

EXHIBITIONS

- 2016 **Gallery 29**, Orlando, FL, Juried mosaic exhibition
 ReCreative Gallery, Seattle, WA. Solo exhibition
 Thomas Architecture Studio, Olympia, WA. Solo exhibition
 Treason Gallery, Seattle, WA. Juried exhibition / Bombay Sapphire Artisan Series
- 2015 **Auburn City Hall Gallery**, Auburn, WA. Featured artist-Juried exhibition
 Carco Theater, Renton, WA. Solo exhibition
 Auburn Downtown Sculpture Gallery, Auburn, WA,. Juried year-long exhibition
 Southern Oregon University, Thorndike Gallery, Ashland, OR. International exhibition

- 2014 **ARTEast Gallery**, Issaquah, WA. Juried exhibition
Sequoia Gallery, Hillsboro, OR. Invitational exhibition
Blowing Sands Gallery, Seattle, WA. Juried exhibition
Ille Gallery, Ashland, OR. Invitational exhibition
Belle Fiore, Ashland, OR. Invitational exhibition
- 2013 **Burke Museum**, Seattle, WA. Women's International Art Festival
B2 Fine Art Gallery, Tacoma, WA. Invitational exhibition
Tacoma Public Library-Handforth Gallery, Tacoma, WA. Invitational exhibition
ArtEast Gallery, Issaquah, WA. Juried exhibition
Ille Gallery, Ashland, OR. Invitational exhibition
- 2012 **Museum of Glass**, Tacoma, WA. Juried exhibition
Washington Center for Performing Arts, Olympia, WA. Invitational exhibition
Ciel Gallery, Charlotte, NC. International exhibition
- 2011 **Museum of Glass**, Tacoma, WA. Juried exhibition
Mackinac Island Art Museum, Mackinac Island, MI. Juried exhibition
Washington Center for Performing Arts, Olympia, WA. Invitational exhibition
The Institute of Mosaic Art, Oakland, CA. Juried exhibition
Highfield Hall, Falmouth, MA. National exhibition
Ille Gallery, Ashland, OR. Invitational exhibition
- 2010 **Sequim Museum & Arts Center**, Sequim, WA. Juried exhibition
Washington Center for Performing Arts, Olympia, WA. Invitational exhibition
Tacoma Museum of Glass, Tacoma, WA. Juried exhibition
The Magnolia Summer Festival Seattle, WA. Featured artist
Childhood's End Gallery, Olympia, WA. Invitational exhibition
- 2009 **Mansion Glass**, Olympia, WA. Invitational exhibition
2008 **Westwind Gallery**, The Dalles, OR. Solo exhibition
2007 **Walters Cultural Art Center**, Hillsboro, OR. International exhibition

LECTURES / PRESENTATIONS / WORKSHOPS

- 2016 **Helvetia Art Studio**, Hillsboro, OR. Mosaic Mural Intensive
Sitka Center for Art and Ecology, Lincoln City, OR. Workshop
American Mosaic Summit, San Diego, CA. Workshop
The Evergreen State College, Olympia, WA. Guest Artist Lecture Series
Choice High School, Shelton, WA. Mosaic workshops for *at-risk* teens since 2013 (weekly, ongoing)
- 2015 **Arbutus Folk School**, Olympia, WA. Workshop Series
Sitka Center for Art and Ecology, Lincoln City, OR. Workshop
- 2014 **The Hoffman Center**, Manzanita, OR. Workshop
Sequoia Gallery, Hillsboro, OR. Workshop
- 2013 **American Mosaic Summit**, Tacoma, WA. Featured Lecture
The Evergreen State College, Olympia, WA. Guest Artist Lecture Series
- 2012 **Seattle Mosaic Arts**, Seattle, WA. Workshop Series
The Association of University Women, Centralia, WA. Guest Lecture
Seattle Mosaic Art, Seattle, WA. Workshop
- 2011 **The Evergreen State College**, Olympia, WA. Guest Artist Lecture Series
- 2010 **Hexen Stained Glass Studio**, Olympia, WA. Workshop Series
- 2009 **South Puget Sound Community College**, Olympia, WA. Adjunct art faculty

EDUCATION

1989-1993 **The Evergreen State College** - Bachelor of Arts, Olympia WA USA

PUBLICATIONS

Amber Lotus Publishing, Artwork for calendar page 2016

Gifts from Guidance, Book cover art, 2014

The Olympian, Cover feature, 2013

Olympia Power & Light, Featured article, 2013

South Sound Magazine, June/July 2012

The Daily World, October 14, 2012

Showcase Magazine, Summer 2011

AWARDS

2016 Atlanta Public Art Roster

2016 Portland Mural Artist Roster

2016 Finalist for Point Defiance Zoo and Aquarium public art project

2015 Encore Arts Grant Award

2010 Lynnwood Arts Commission, WA- Juror's Choice

MEMBERSHIPS

Society of American Mosaic Artists

Contemporary Mosaic Arts Association

Salem Art Association

REFERENCES

- **Jill Carter**, Interior Designer, 360-789-7099 or jill@jillcarterdesign.com **Jill and I have worked together on several projects.*
- **Darby Cowles, AICP**, Senior Planner/City of Bellingham, 360-778-8389 or dkcowles@cob.org
- **Leslie Reynolds-Taylor**, President of the South Kitsap Skatepark Association, Port Orchard, zmt6969@aol.com

Siuslaw Bridge Steps Review Meeting

May 2nd, 2018 @ 7:30am

Florence Event Center

Review Agenda

Handouts

Score Rubric

Original Call to Artists

Raw Scores and Comments from Round 1

Fresh Score Card

Please Bring

Any comments you have written down that were not in the Café system

Laptop

Goal

Select top 3 recommendations (with alternates incase of tie/s), in order of preference. Express why we have selected these, what we like and address any concerns. We will need to create a dialog for why we are choosing these projects.

1. Welcome
 - a. Get settled in
 - b. Thank you!
2. Getting Started
 - a. Removed anything below 4 (removed 14 of 23) - 4 & up in running
 - If you loved one that was out, let us know why it should be in the running
 - b. Scoring Styles – Each person pretty consistent
3. Review Top Choices (10mins per application)
 - a. Discussion of top (9) selection with new scorecard (round 2) – Starting at the bottom to the top:
 - 1 -1st, 2 – 2nd, 1 -3rd, 1 -4th, 3 – 5th, 1 – 6th
 - b. Fresh score (Round 2) for each project while reviewing Rubric. Review our numbers and pick the top applications
 - i. Items to Discuss for Each Submission:
 1. Strong Points
 2. Concerns
 3. Lighting/Landscaping (Artists can add on)
 4. Realistic budget? Can they really complete? Realistic Skills and pull off with in budget
 5. Public Component
 6. Where Artist is from and budget for that
 7. Appropriateness to location
 8. Life span of project, longevity and maintenance
 9. General quality of application and togetherness
 10. What should be discussed with Artist?
 - c. Any other discussion
 - d. Tally up results, to show final top selections, if possible during the meeting
4. Thank you!
 - a. You are encouraged to attend the meeting that we are presenting our selection to PAC. We will email you that date and time
 - b. Feed back on process, what worked, didn't work, what could we do better? How did you like café, we want to improve process for the next jury.
 - c. You are encouraged to continue your participation by staying involved, volunteering during the project and other opportunities that may arise!



Public Art Committee

Jury Review Pack Siuslaw Bridge Steps Project

Dear Juror,

Thank you so much for being a part of Florence Public Art! The Public Art Committee is very excited to move forward with the jury phase of the Siuslaw Bridge Steps Project. This packet has been created to help guide you through the review process. If you have any questions, please feel free to contact; Kelli Weese (kelli.weese@ci.florence.or.us), Jo Beaudreau (jbeaux@gmail.com) or Susan Tive (sbtive@me.com).

Step by Step Tasks & Important Dates:

- **Confidentiality Agreement:** Please review this packet and submit your confidentiality, conflicts of interest & bias form (see below) by March 23rd.
- **Artist Review:** Once we receive signed confidentiality agreements from all jurors, we will email you your username and password to score applicants on Café. You will have two weeks from this date to complete your scoring (on or before April 6th).
- **Jury Meeting Date:** Within the email with your username and password for Café, we will send you a link to a doodle poll to determine the date / time for an initial jury meeting. Please reply to this link to let us know the date/times you would be available for the weeks of: April 9th and April 16th.

Confidentiality, Conflicts of Interest & Bias

In order to ensure a fair and thoughtful jury process we ask that you please read and sign the attached Confidentiality, Conflicts of Interest, and Bias Acknowledgement and return it to the City of Florence – Attn: Kelli Weese. To return it you may either:

- Scan and email it to kelli.weese@ci.florence.or.us;
- Mail it to: City of Florence, Attn: Kelli Weese, 250 Hwy 101, Florence, OR 97439
- Drop it off at Florence Public Works: 2675 Kingwood Street, Florence, OR – During normal business hours

Once you return the confidentiality agreement, you will receive your CAFÉ user name and password to access the scoring system via email.

Review the Call To Artists

The call information can be found here: bit.ly/SiuslawBridgeStepsArt. We've included it as well in this packet along with an attachment provided to the artists to review when creating their proposal. Please be sure to thoroughly read the call before reviewing applications.

The goal of the jury process is to review the applications, score them and agree upon 2 or 3 recommendations for the Public Art Committee which will do further due diligence and make the final decision.



Public Art Committee

Café Review System

We've created a "Siuslaw Bridge Steps Café Jury Scorecard Information" sheet to help jurors with the review process. Please review attachment.

How to Review Art

Art is subjective. Here are some references to review before looking at the submitted projects.

KQED Video on Looking at Public Art: <https://www.youtube.com/watch?v=MNO14EzuPM4>

Review Guidelines

Included in this packet is a "Judging Rubric for the Siuslaw Bridge Project" that may be helpful when reviewing submissions. Please see attachment.

Notes

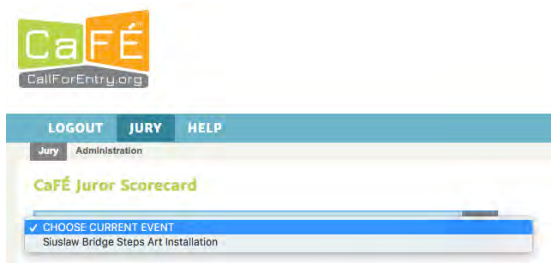
When reviewing, please write out any notes on the template provided. There is an option to do this digitally as well. Having notes on paper will help you remember your thoughts and be very useful when the jurors convene in person. These notes are to jog your memory during discussions and to help with the final selection of the recommended projects. They will need to be turned in to Kelli Weese at the end of the Jury Review Session.

Judging Rubric for the Siuslaw Bridge Steps Project

Excellent	Very Good	Good	Okay/Fine	Needs Work
	6-7	5-4	3-2	1
VISUAL IMPACT (overall quality)	The unique organization of art elements, content, & execution create a striking & memorable work. If selected this project has the power to “wow” the viewer.	The organization of art elements, content, and execution create cohesive work. The work has lasting impact on the viewer.	The organization of art elements, content, and execution are addressed in the work. The work holds the viewer’s attention .	The organization of art elements, content, and execution is incompletely addressed in the work. There is little or no impact on the viewer.
INTERPRETATION & CREATIVITY (completeness/effort)	The design shows unique and creative interpretation of the project and was continued until it was as complete as possible. Effort was far beyond that required, with great attention to details.	The design shows clear understanding of the requirements and the artist’s ability to think “outside the box.” With more effort, the application might have been outstanding.	The design shows some creativity and adequate interpretation of the requirements. However, the work appears unfinished.	The design requirements are fulfilled, but there is no evidence of original thought or interpretation. Application is incomplete or lacks attention to details.
COMPOSITION/ DESIGN (organization)	Shows and effectively utilizes knowledge of the elements and principles of design. The design effectively fills the requirements.	Shows an awareness of the elements and principles of design, using one or two main elements and/or principles.	The application was completed, yet lacks conscious planning and little evidence that an overall composition was thought through. The design partly filled the space.	The artist showed little evidence of any understanding of the elements and principles of art; no evidence of planning. The installation space is somewhat used.
CRAFTMANSHIP (made with skill of mediums and overall neatness)	Demonstrates a mastery of skill and a clear understanding and application of specific medium qualities. The design is beautiful and complete.	Demonstrates skill and some understanding of specific medium qualities. The design is pleasing and partially complete.	Application demonstrates partial skill and understanding of specific medium qualities. The design is fair.	Application lacks understanding of specific medium qualities. The design is a bit careless in creation of the work.
CRITERIA	All criteria of the project’s requirements have been met. Artist demonstrates the best example of following directions for assignment.	Most of the required criteria have been followed.	Some of the criteria have been met.	Only one criterion has been met.

Siuslaw Bridge Steps Café Jury Scorecard Information

- Log in with user name and password provided
- Go to Jury Tab along the blue bar
- Select project (Siuslaw Bridge Steps) under drop down menu that says Choose Current Project



- The system will automatically generate information once selected, below:

The screenshot shows the 'CaFÉ Juror Scorecard' interface. It displays 'Current Round: 1' and 'Number of Applications: 23'. Below this is a dropdown menu showing 'Siuslaw Bridge Steps Art Installation'. Under 'Step 1: Select your review preference', there are three radio buttons: 'Preview Slideshow', 'Thumbnail Scorecard' (which is selected), and 'Slideshow Scorecard'. Under 'Step 2: Click a number in the table below to begin your review.', there is a table with the following data:

	REMAINING	SCORED	TOTAL
Applications	23	0	23

Below the table is a search section with fields for 'Artist ID', 'Application ID', and a checkbox for 'Show Tagged Applications Only'. A 'Go' button is at the bottom right.

Step 1:

Select your preference:

1. Preview Slideshow (allows you to preview images and not score)
2. *Thumbnail Scorecard (allows you to view and enlarge images to score)
3. Slideshow Scorecard (allows you to view images as slideshow and score)

**Thumbnail Scorecard was used to create this document and is recommended.*

Step 2:

Shows you how many applications you have to review. How many you've scored.

To Begin Scoring:

Click on the number of applications, a new window will pop up.

If you have notes for an application, write the Artist ID & Artist Application Number on the top of your review notes sheet. There is a comments box to type out your comments.

The artists statement is provided in text for you. To review the additional documents the artist has provided, you must click on **Citation** to view. A new browser window will pop up showing the; Artists Resume/CV; Project Proposal; Artist References; and any additional documents they wanted to include.

Sluslaw Bridge Steps Art Installation Artist Citations	
Artist ID	#####
App ID	#####
Statement	Artist Statement Text HERE
Citation	View questions and answers
Score	<input type="radio"/> 7 <input type="radio"/> 6 <input type="radio"/> 5 <input type="radio"/> 4 <input type="radio"/> 3 <input type="radio"/> 2 <input type="radio"/> 1
Remove	<input type="checkbox"/> Delete this Score
Comments	<div></div>
<div>SAVE THIS SCORE</div>	
Image Here	Art Title Here Type of Art Size Price Year
Image Here	Art Title Here Type of Art Size Price

The Artists Resume/CV; Project Proposal; Artist References; and any additional documents they wanted to include is visible when you download and open the file. The file will automatically download once clicked on.

In some browsers (such as Chrome), the download file will appear at the bottom on the browser in a bar, click on the completed download and the file should automatically open in a new browser window. If you do not see the download file icon, you will need to go to the file folder where items downloaded, wherever you have that set to download on your computer systems.

Siuslaw Bridge Steps Art Installation Artist Citation

Please upload your Artist Biography in the space provided.

1 Mary C_Biography Newest.pdf ([download](#))

Please upload your Artist Resume/CV in the space provided.

Resume2017.pdf ([download](#))

Please upload your project proposal. PDF is preferred so that you can have multiple pages, if needed.


Oregon Trail steps.pdf ([download](#))

Please upload your Artist References in the space provided. At least three should be provided.

Oregon Trail steps.pdf ([download](#))

If you have additional documents for your project proposal, please upload in this space.

No files uploaded



Score

Score 7 as being the highest value, 1 as the lowest.

Images

To view images provided by artist, click on thumbnail on the scorecard browser window, a pop up window with a slideshow will generate to view the images larger. Click the arrow at the top of the image to advance to through the slideshow. Close window when done reviewing the artist images.

Finishing Review

Once the artist is reviewed, scored and comments completed, close all tabs relating to that application to not confuse with another applicant.

Repeat to review additional applications.



FOR ARTISTS!

Find calls. Apply. Manage your entries.

LOG IN

Forgot Username? Forgot Password?
Need an account? [Register here.](#)

HOME

ABOUT US

HOW TO APPLY

MEDIA PREP

CAFE HELP

BLOG

FOLLOW US

Call Detail

Favorite



City of Florence
Oregon

Siuslaw Bridge Steps Art Installation

Siuslaw Bridge Steps Art Installation

Florence City Hall
Public Art Committee
ATTN: Kelli Weese
250 Highway 101
Florence, OR 97439

[APPLY TO THIS CALL](#)

[BACK TO PARTICIPATING CALLS](#) [CONTACT EVENT](#)

Entry Deadline: **Rolling**

Jury in progress - submissions closed temporarily

Number of Applications Allowed: **3**

REQUIREMENTS:

Media

Images - Minimum: **2**, Maximum: **6**

Audio - Minimum: **0**, Maximum: **6**

Video - Minimum: **0**, Maximum: **4**

Total Media - Minimum: **2**, Maximum: **6**

Entry Fee (Siuslaw Bridge Steps Art Installation): **\$25.00**

[View Site Details](#)

Introduction

The City of Florence and The City's Public Art Committee (PAC) are pleased to announce plans to create and install several high impact art projects. The PAC believes that these projects will generate community pride and connectivity, provide artists a creative outlet with high visibility, and benefit citizens with quality and meaningful public art while encouraging economic development and tourism.

Background

By creating public art, the Florence community can reap esthetic benefits, create conversations, join together and, create buzz for tourists that will increase economic growth. The Oregon Coast is not only known for its natural beauty, but for the art that it inspires! The PAC's mission is to make everyday a celebration of the arts in Florence.

The Siuslaw Bridge in Old Town Florence is an historic landmark, long a symbol for the city and gateway to the riverfront downtown area. Designed by Conde McCullough the bridge opened to traffic in 1936. At a later date a set of steps was added north of the bridge into the hillside leading to Bay St. and downtown. The Siuslaw Bridge Steps Art Installation Project is an exciting outdoor public art project designed to beautify and enhance the park-like hill and pedestrian steps leading from Old Town Florence up to the Siuslaw Bridge. The vision for this project is to install artwork on the steps, utilizing them as a canvas while also incorporating the railings, lighting and natural incline of the landscape. The goal of this project is to bring this interesting but often overlooked area of Old Town Florence to life with eye-catching and interactive art while at the same time maintaining the functionality and safety of the steps for everyday pedestrian use. The PAC is looking for imaginative designs that include the possibility of community participation at some stage of the installation process. Design ideas that utilize a variety of media are encouraged.

Reasons to Apply & Participate

- Unique opportunity for creative expression
- Showcase your talent in a high visibility location
- Work with an art friendly community
- Media attention throughout the region
- Artist recognition
- Honorarium and materials fee
- Beautiful everyday objects
- Create functional art near an historic landmark

General Application Process

1. Application Submission via CallForEntry.org

- Artists must create a profile to apply to this call
- For more information on CallForEntry.org and creating a profile: callforentry.org/faq.phtml
- Progress of your application can be seen when logged into your profile

1. Finalists will be selected by the City of Florence Public Art Committee and community panelists

Eligibility

- All artists, over 18 years old are eligible
- Entries must be the original design and artwork of the entrant and suitable for viewing by all ages, (see design guidelines)

Design Guidelines

- Designs must take into account the pedestrian use of the steps and all City of Florence Safety Codes (see Appendix)
- Designs should include use of both the risers and step surface as well as the sidewalks and banisters, landscaping and lighting
- Creativity and innovation of design in relation to the location are strongly encouraged
- Art should be visible from a distance, and be engaging from multiple angles and perspectives
- Submitted artwork should exhibit excellent craftsmanship and show experience working with a natural landscape and steep gradient
- Artists should consider the longevity and maintenance of their designs as this is a long-term installation in an outdoor location close to the Siuslaw River and exposed to the elements
- Artists must submit a design using the provided template (Site Plan Information PDF: https://www.callforentry.org/fair_plans/4567.pdf), submission must accurately represent the final design
- Designs must not include any breach of intellectual property, trademarks, brands, business names, corporate or organizational branding
- Designs must not include religious references, symbols or numbers, political or copyrighted material
- Selected artist/s must be willing to work with the PAC to adjust design, if necessary

Important Details

- Designs that incorporate the landscape surrounding and beyond the stairs are encouraged
- This area may or may not be lit at night, incorporating solar lighting or other alternative lighting is encouraged
- No element of the design can be tall enough to be viewed by motorists traveling on Highway 101 above the top of the hill where the steps are located
- Artists should be aware that the final design is subject to ODOT (Oregon Dept. of Transportation) approval, and start time may be affected

Things to Consider

- The steps will be cleaned before the artist begins work
- The City will coordinate with the selected artist to schedule appropriate cleaning and start dates
- Artists will need to cover over functional areas (masking)
- Artists must supply their own water and materials
- Drop cloths should be used at all times while painting
- City will coordinate the passage on the sidewalk/stairs for pedestrians and show alternative routes when closed for work
- Blocking traffic or lanes of the street is not permitted. Depending on scope of project, a few parking spots may be blocked for specific use for this project
- Project completion date/s depend on type and scope of work being done, materials used, and community involvement
- Storage shed, dry locked for storage of materials, may be provided if needed
- The City and PAC will be promoting the project. Artist is expected to help and document their process
- The Artist is expected to participate in an unveiling/opening celebration/ribbon cutting at the completion of the project
- Work plans that include an element of community participation are preferred
- The selected Artist is required to furnish the city with a comprehensive plan for the long-term maintenance of their artwork

Budget

The overall budget for this project is **\$30,000**. This includes concept, design, materials, installation and any necessary insurance.

Deadline

This call to artists will run from August 15, 2017 through January 15th, 2018 (Originally was November 30, 2017).

Evaluation Criteria

1. Demonstrates Excellence

- Exciting design concepts
- Creativity and innovation
- Good use of materials
- Visually compelling
- Innovative use of physical space

2. Meets Project Goals

- Compliments location and historic sites nearby
- Includes a community "hands-on" activity during installation
- Utilizes railings and surrounding landscape
- Has a realistic timeline and work plan

3. Artist Qualifications

- History of successful projects
- Experience meeting timelines and budgets
- Ability to work with the community and PAC

4. Application Process

- Follows instructions carefully
- Completes all application requirements

Appendix/Additional Resources

[City of Florence City Website](#)

[City of Florence Public Art Committee](#)

[City of Florence Safety Code](#)

[More info about the public art committee and public art in Florence](#)

[Print this Page](#)

[View Legal Agreement](#)

[HOME](#) [ABOUT US](#) [HOW TO APPLY](#) [MEDIA PREP](#) [FAQ HELP](#)

[Terms of Service](#) [Privacy Policy](#)

Copyright 2018 Western States Art Federation.
All rights reserved. **Powered by WESTAF**



Siuslaw Bridge Steps Art Installation

Site Plan Information



Birds Eye View of the Siuslaw Bridge Steps.

Image Credit: Google Maps



Birds Eye View of the Siuslaw Bridge Steps.

Image Credit: Google Maps



Image Credit: Google Maps Stretview

Google Streetview of the from Bay Street Siuslaw Bridge Steps. Highway 101 Bridge visable over Bay Street.



View of Bridge Steps from Parking Lot, looking up to Highway 101.



View of Bridge Steps from parking lot looking up to Highway 101 from right of Bridge Steps from Parking lot.

View of Bridge Steps from down steps from Highway 101 to parking lot.





View of Bridge Steps from center landing, looking up to Highway 101.



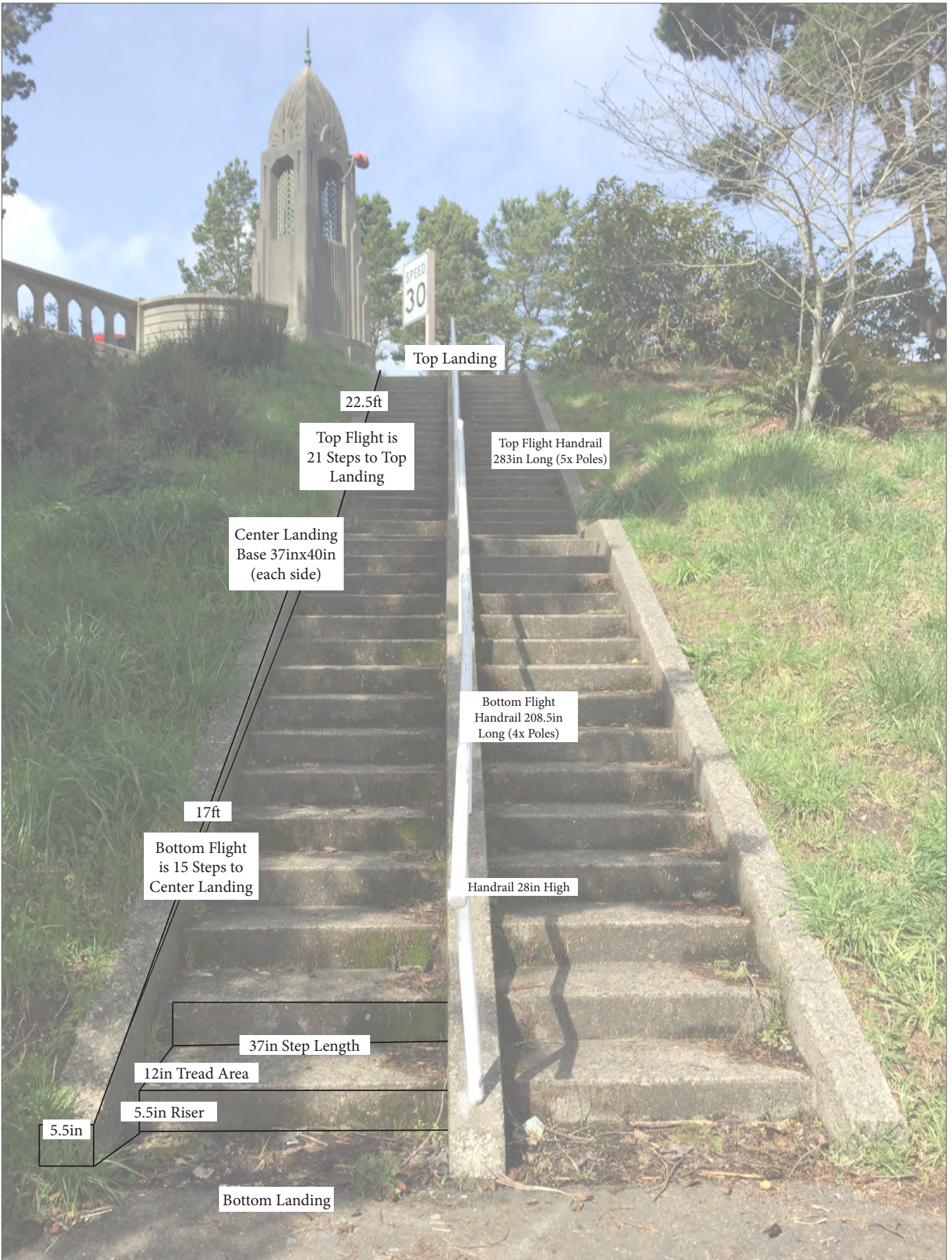
View of Bridge Steps from center landing, looking down to parking lot.



View of Bridge Steps from top landing, looking south to Bridge.



Night View of Steps from Bottom of Stairs.







Panoramic View of the Steps from Parking Lot.



City of Florence

250 Hwy 101, Florence, OR 97439

www.ci.florence.or.us

**City of Florence
Public Art Selection Committee
Confidentiality, Conflicts of Interest & Bias Acknowledgement**

In accepting the post on the selection committee, I acknowledge receiving the policies listed below and I agree to abide by said policies.

Confidentiality

In serving on the selection committee I acknowledge that I will not:

- Willfully share any information about the artists, artwork or other submission information with anyone besides the fellow selection committee members.

Conflicts of Interest

In serving on the selection committee, I acknowledge that I will abide by the ethics laws of the State of Oregon. As a member of the Selection Committee I will not:

- Participate in the selection committee if myself, a relative, member of my household, or business of which any are associated, has a direct or substantial financial interest in the decision.

Bias

In serving on the selection committee, I acknowledge that I will not participate in the selection committee if:

- I hold a bias toward any particular artist, artwork or submission that would preclude me from making an impartial decision.

Review of Selection Criteria

In serving on the selection committee, I acknowledge that I will review the artists, artwork or submission information, and will grade such submissions based on the selection criteria.

Name: _____

Signature: _____

Date: _____

Public Works
989 Spruce St.
(541) 997-4106

**City Manager/
City Recorder**
(541) 997-3437

**Community Development:
Planning & Building**
(541) 997-8237

**Finance/
Utility Billing**
(541) 997-3436

Justice Center
900 Greenwood St.
(541) 997-3515

Florence Events Center
715 Quince St.
(541) 997-1994



From: Jo Beaudreau
To: [Harlen Springer](#); [Kelli Weese](#)
Subject: Re: Schedule for installations and photo-op for "Art Exposed" next week
Date: Tuesday, May 08, 2018 10:51:49 AM

On my calendar :)

~Jo

On Mon, May 7, 2018 at 4:31 PM, Harlen Springer <harlens@comcast.net> wrote:

To: The PAC

We have been working with the artists and Mike Miller and this is the tentative plan for next week.

Monday, May 14 - At 9:00 am Pancho Clark (artist) will meet Mike and me at Old Town Park to review the installation of "Copper Leaf Tree." Public Works will install the sculpture that morning. **At 1:30 we will have a photo op with the Committee,** Public Works, and Pancho. I have also invited Ron Hogelend and Nancy Archer. Chantelle from the paper will take a picture and probably get a quote from Pancho.

The other sculpture, "Transformation" is being shipped in from British Columbia (The artist had a conflict and cannot attend) and will arrive Monday afternoon. We will work with Mike to select another day (Tuesday-Thursday of next week) to do the installation and photo-op. We will need to wait until we confirm that it has arrived before we schedule this, but we would like to do it next week prior to Rhody Days.

So, we're moving - mark your calendars for Monday afternoon and we can confirm all this at the meeting on Monday morning.

Harlen

Public Art Article Idea Schedule for Publication in Siuslaw News & City of Florence Newsletter

Siuslaw News 'Community Voices' (Published 2nd Wednesday of Month)
City of Florence Newsletter (Published by 1st Friday of the Month)

Month	Overall Article Content	Who will Write?	Deadline to Kelli (3 days before 1 st Deadline)	Siuslaw News Deadline (1 st Wed. of Month)	City of Florence Deadline (25 th – ish of Month Prior)
March	Art Exposed	Jane	March 2nd	March 7 th	March 26 th
April	Public Art Q&A	Jo	March 30th	April 4 th	April 25 th
May			April 27th	May 2 nd	May 25 th
June			June 1st	June 6 th	June 26 th
July			June 28th	July 3 rd (Moved up due to Holiday)	July 25 th
August			July 27th	Aug. 1 st	Aug. 24 th
September			Aug. 31st	Sept. 5 th	Sept. 25 th
October	Art & Humanities Month		Sept. 28th	Oct. 3 rd	Oct. 25 th
November	Join the PAC Committee	Kelli	Nov. 2nd	Nov. 7 th	Nov. 26 th
December			Nov. 30th	Dec. 5 th	Dec. 21 st
January			Dec. 28th	Jan. 2 nd	Jan. 25 th

Article Content Ideas:

- Art Passport
- Siuslaw Bridge Steps
- Horse
- ReVision Florence Art
- Current Art – New City Hall Art
- Art Donations (what has been donated, why? How can you be a donor to the arts?)
- Hwy 101 & 126 Intersection Mural
- Public & Private Partnership Projects

All articles should list:

- Meetings are public to attend
- Check the City website for more current meeting schedule
- Members of the public are encouraged to sign up for the PAC distribution list
- Be posted on City Page
- Be listed in the City Newsletter
- Post on FB, & shared to various pages
- Have at least 1 image to go with it
- Contact person?

Draft Public Art Committee Project Timelines & Discussion Questions 2018 Calendar Year

Yellow = Need Input from Sub-Committee

Trash Cans & Transit Stops (Jennifer & Ron)

1. Trash Cans

- a. Would we like to continue the program for the remaining trash cans for 2018? –
 - i. Very damaged already; Not good to do the lids but do the trash cans themselves w/ panels etc. –
What is the timeline for new cans?
 1. Potential to paint panels during class etc.; then have the panels sprayed with a good clear coat
 2. Spring 2018 do the panels – hopefully have the kids to them in their classes
 3. Jen & Ron check them out and put more clear paint etc. – have a couple of the students help as well.
 - ii. Potential to buy new trash cans along with ReVision Florence
- b. Do we want to fix / replace current trash cans in 2018? If so, what should we budget / remove from budget to do so? – wait until after hear more about ReVision Florence

2. Transit Stops

- a. What timeline do we wish to implement to update the transit stops (see potential draft for discussion below)?
 - i. Should we do just one (Safeway) now, and then do research for the others for fundraising? – Yes;
- b. Do we wish to do fundraising to pay for bus stops outside of the Urban Renewal District? – After completion of the first bus stop

Tasks	Draft Timeline
Prepare draft Call to Artists	February / March 2018
Call to artists & final project timeline approved by PAC	March 19, 2018 PAC Meeting **
Call to artists published	Week of March 20 th
City / PAC recruit for selection committee	March 20 th – April 7 th
Public Art Committee Approves Selection Committee	April 16 th PAC Meeting **
End Date for Call to Artists	April 21 st (4 weeks)
Selection Committee Reviews Submitted art pieces & prepares recommendation to PAC	April 21 st – May 15 th
PAC Approves Artist	May 21 st PAC Meeting (Kelli Not in Attendance)
Potential Date of Installation	June / July 2018

Hwy 101 & Hwy 126 Intersection Mural (Jane R. & Joshua)

1. Review Potential Timeline below...
2. Does budget still meet needs of project? (See Update) – Add PR Items to the Timelines

Tasks	Draft Timeline
Coordinate Intergovernmental Agreement with Central Lincoln PUD	December / January 2018
Approve recommendation for council approval of draft IGA (<i>Pending CLPUD negotiations timeline</i>)	January 22 nd PAC Meeting **
Council approve CLPUD IGA	February 5 th City Council Meeting
Prepare draft Call to Artists	February / March 2018
Call to artists & final project timeline approved by PAC	March 19, 2018 PAC Meeting **
Call to artists published	Week of March 20 th
City / PAC recruit for selection committee	March 20 th – April 10 th
Public Art Committee Approves Selection Committee	April 16 th PAC Mtg
End Date for Call to Artists	May 4 th (7 weeks)
Selection Committee Reviews Submitted portfolios & prepares recommendation of artists to continue to PAC	May 7 th – 15 th
PAC Approves Artist	May 21 st PAC Meeting ** (Kelli not in attendance)
Artists notified and asked to submit proposed art	Week of May 22 nd
Deadline for Art pieces to be submitted from approved artists	June 22 nd (4 weeks)
Selection Committee reviews submitted proposals and prepares recommendation to PAC	June 25 th – July 10 th
PAC Approves artist submittal	July 16 th PAC Meeting **
PAC submits mural application to Planning Department	Week of July 16 th
Planning Commission Public Hearing	TBD – August 2018
Installation Date / Time determined with artist	July 17 th – July 31 st
Potential Date of Installation	August / September 2018

Siuslaw Bridge Steps (Jo & Susan)

1. Review Potential Timeline below...
2. Does budget still meet needs of project? – Have Building Official look at design for safety considerations

Tasks	Draft Timeline
End Date for Call to Artists	January 15 th
City / PAC Recruit for Selection Committee	December 1 st – January 12 th Update
Public Art Committee Approves Selection Committee	<u>January 22nd PAC Mtg **</u>
Selection Committee Reviews Submitted art pieces and prepares recommendation to PAC	March / April
PAC Approves Artist	<u>May 14 PAC Mtg **</u>
Submit final designs to ODOT and begin coordinating installation timelines	June 15
Potential Date of Installation	July/Aug/Sept 2018

Art Exposed Gallery (Harlen, Jayne S., Jane R.)

1. Do we wish to have a selection committee for this project? – No Selection Committee – Let people know what we are doing and invite them to the PAC meeting to decide and submit written comments
2. Do we wish to have a February PAC meeting in order to approve artists for project?
3. Review Potential Timeline below...
4. Does budget still meet needs of project?

Tasks	Draft Timeline
Draft Call to Artists Approved by PAC	<u>December 11th PAC Meeting **</u>
Call to Artists Published	Week of December 11 th – Next Week
Letters to surrounding property owners etc.	January / February
End Date for Call to Artists	February 18 th
Selection Committee Reviews Submitted art pieces and prepares recommendation to PAC	January 29 th - February 9 th
PAC Approves Artist	March 19 (Included Public Comments)

<p>Work with artists and Public Works to finalize installation date March 19 – May 1</p> <p>Final decision on Maple Street Artwork - May 14</p> <p>Finalize Plaque Content – May 14</p>	
Dates of Installation	May 14 – 16 and June 4 – 8, 2018 (includes PAC photo-op

Approve the Call to Artists – Ron M, Jane 2nd – All in Favor

- \$25 entry fee – Submit up to 5 – 1 for each location;

Public Art Donations

1. Review general timeline / process for items as they come up below...
2. Donation Review Criteria
 - a. Artistic Excellence – Piece has exceptional quality and enduring value
 - b. Appropriateness to Collection – Piece meets goals of PAC for diversity of media, artists represented and styles
 - c. Appropriateness to Site – Relationship of artwork to site is considered
 - d. Maintenance provisions – Detailed maintenance instructions received from donor (including frequency of cleaning, etc.), potential funds for maintenance considered.

Tasks	Draft Timeline
Coordinate with donor to complete donation form and review criteria for approval (see approval criteria below)	
Prepare recommendation for potential recommendation of approval by PAC including review of criteria and location	
PAC Recommends City Manager approve acceptance of Donation	At a PAC Meeting
Coordinate with Public Works Department for attainment & placement of piece	
Potential Date of Installation	Most recent= April 24, 2018

Fundraising (Susan,

1. How do we want to research / apply for grant opportunities? Do we need to allocate funding toward an intern / grant professional?

2. How do we want to fundraise for the projects within the community?
3. Create a formal \$ Donation program

Marketing (Jo & Kelli – with each project team through their timelines)

1. How do we want to update the City's PAC site?
2. What project marketing do we want to do? – Brochures, Website, Social Media, Local Media, Groundbreaking / Ribbon Cutting

Other Projects

1. How / when do we want to prepare catalog of current art pieces? How should maintenance timeline be implemented?

Mural Code Amendments

1. Review general timeline / process for items as they come up below...
Note: Timeline not affirmed by City Manager or Planning Director and subject to change

Tasks	Draft Timeline
Discussion of options / alternatives prepared in conjunction with City Attorney	October – December 2018
PAC Approves direction of amendments to the City Council	<u>December 10th PAC Meeting **</u>
PAC, CC, PC - Joint Work Session to discuss direction	
Draft Code Amendments Prepared	
Draft Amendments reviewed by Attorney and Team	
Amendments sent to PAC for review	
PAC makes recommendation to initiate code amendment process	
City Council & Planning Commission Joint Work Session on Code Amendments	
Edits made to code and reviewed by Attorney	
Notice sent to DLCD (35 days before hearing)	
Planning Commission Public Hearing	
City Council Public Hearing & Adoption	

ReVision Florence & Other Potential Projects

1. Review general timeline / process for ReVision Florence (see below)
2. Review Budget Remainder and determine which projects to fund etc.

Tasks	Draft Timeline
Fundraising options & Potential Budget Prepared	January – July 10 th
Fundraising options & budget drafts reviewed	January 22 nd PAC Meeting **
Fundraising options & potential budget approved by PAC	July 16 th PAC Meeting
Call to artists and timeline prepared	July to August 14 th
Call to Artists & Timeline Approved by PAC	August 20 th PAC Meeting **
Call to Artists Published	Week of August 21 st
City / PAC Recruit for Selection Committee	September 11 th – October 12 th
Public Art Committee Approves Selection Committee	October 22 nd PAC Meeting **
End Date for Call to Artists	November 16 th
Selection Committee Reviews Submitted art pieces and prepares recommendation to PAC	November 17 th - December 4 th
PAC Approves Artist(s)	December 10, 2018 PAC Meeting **
Potential Date of Installation	March 2019

Other Discussion Topics

1. Delegation of work... considerations include:

- a. Can the public art committee (as volunteers) meet the proposed timelines? Should the Committee consider recruiting for additional volunteers for subcommittees? Allocating resources to intern / temporary employee assistance? Etc.**