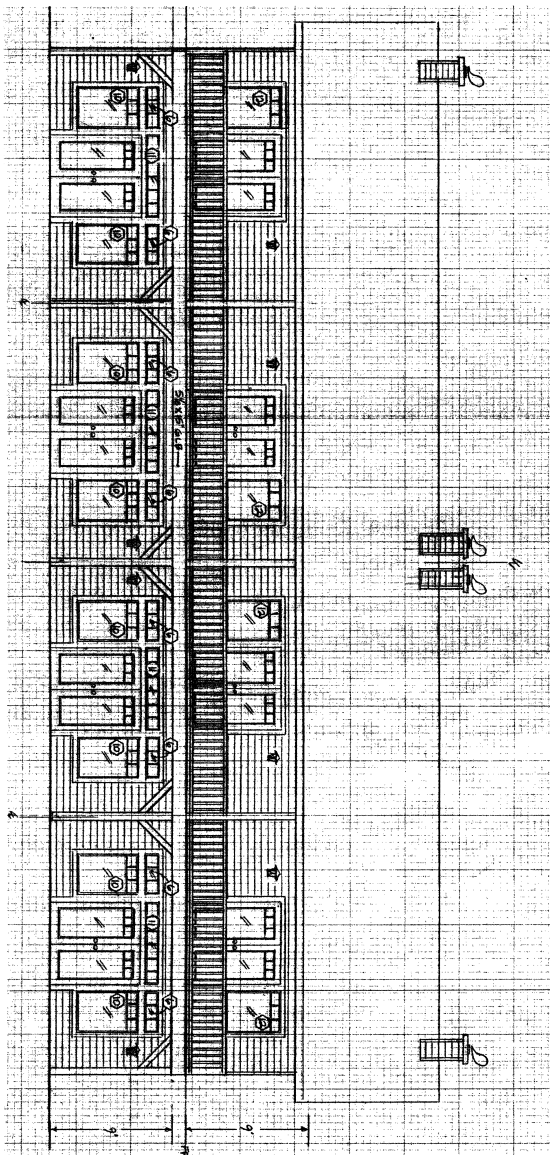


# ATTACHMENT 7

## Template Structural Plans (Oak Street Commons)

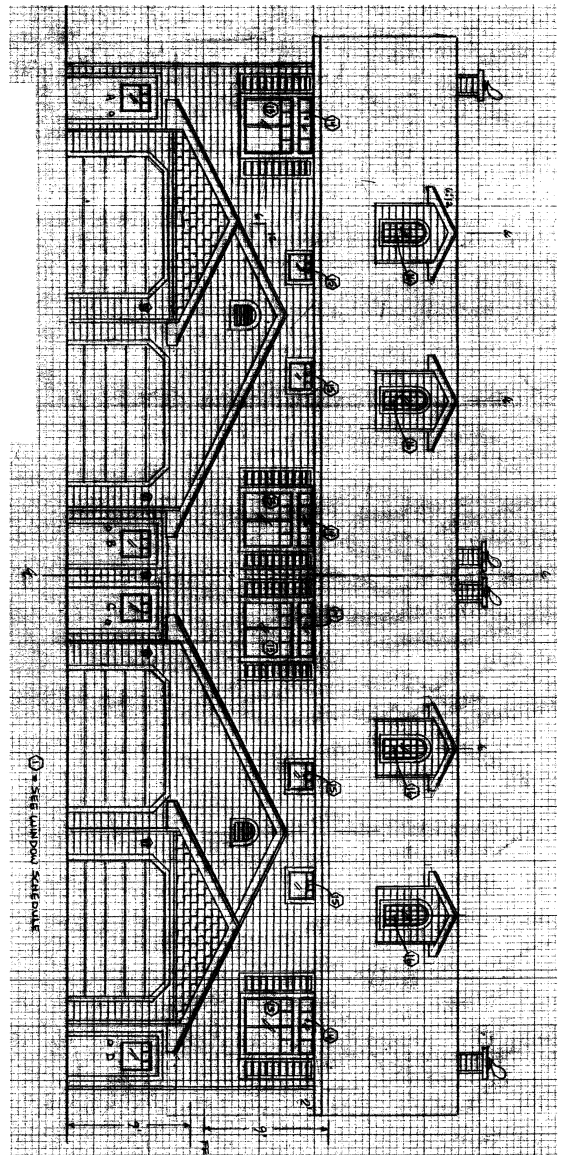
Myrtle Glen Subdivision  
Preliminary PUD Application to City of Florence  
December 2, 2022

11/15/2018



BACK ELEVATION VIEW

1/4" = 1'



FRONT ELEVATION VIEW

1/4" = 1'

SHEET  
59 OF 10

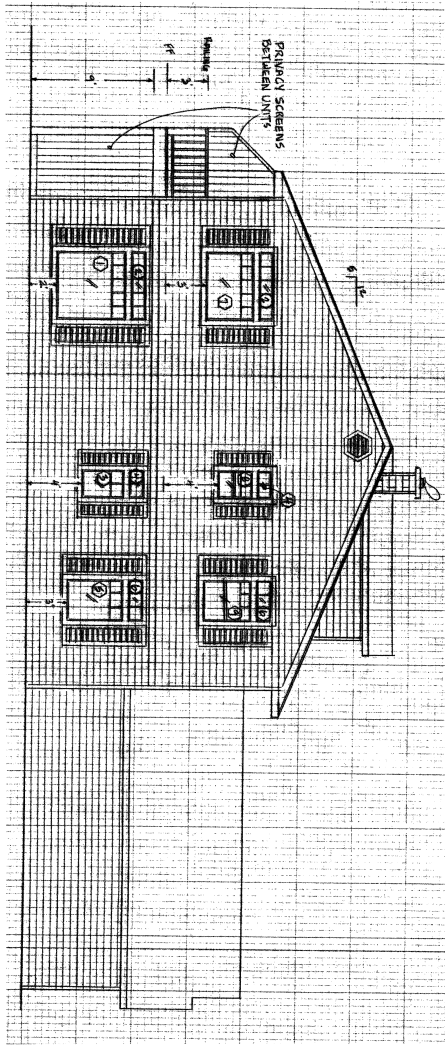
DESIGNER	DATE	SCALE	PROJECT
MMM	5/2/2018	AS SHOWN	OAK STREET COMMONS
NO. 1271			

SHEET CONTENT  
ELEVATION VIEWS

**OAK STREET COMMONS**  
 TOWNHOUSE FLOOR PLANS  
 TAX MAP: 18-12-23-23 T.L. 2200 & 2800  
 FOR  
 WILLIAM JOHNSON CONSTRUCTION, INC.  
 FLORENCE, OREGON

**Mike McAllister Engineering**  
 1101 E. MARLTON ROAD  
 MAPLETON, OREGON 97453  
 PH: 541-288-6200  
 FAX: 541-288-4328





SIDE ELEVATION VIEW

1/4" = 1'

SHEET  
S10 OF 10

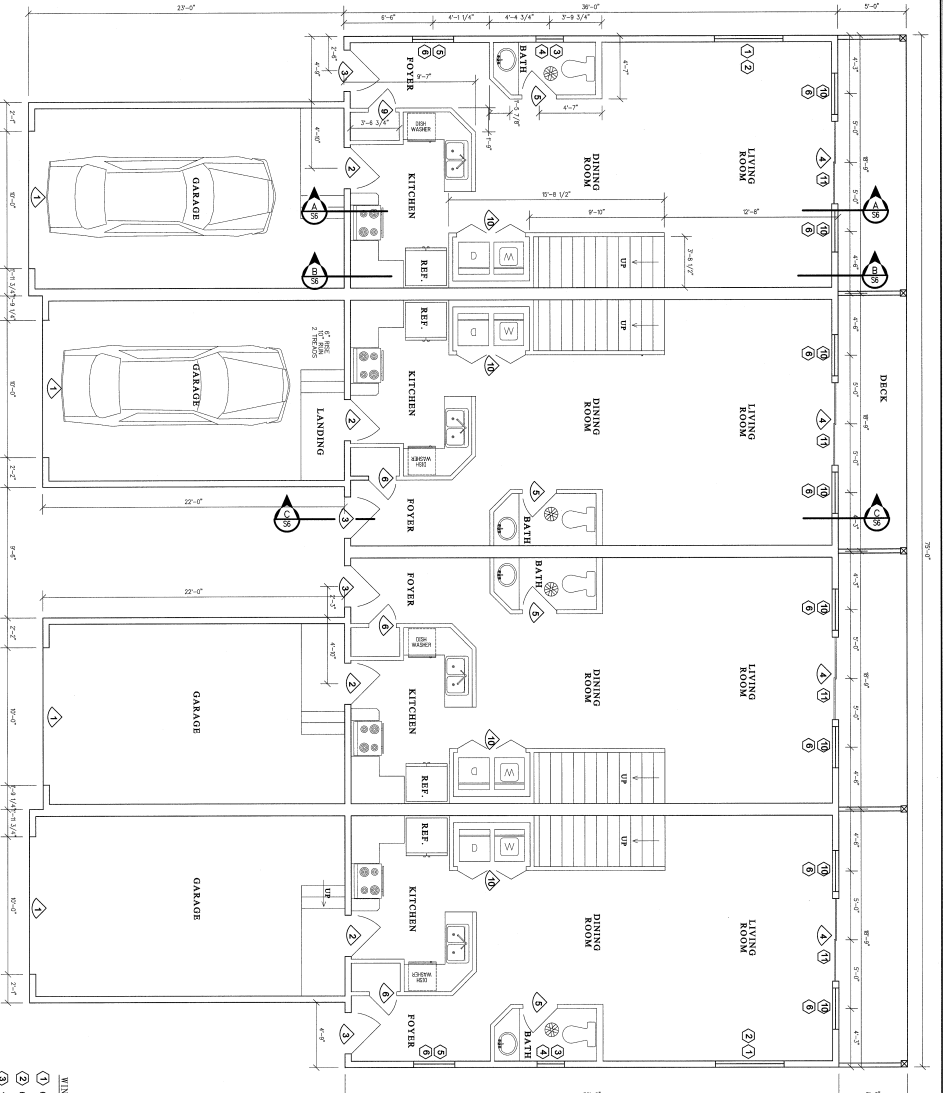
DATE	2/2/2008	SCALE	AS SHOWN
DRAWN	M.M.K.	DATE	12/21
BY	M.M.K.	DATE	12/21
BY	M.M.K.	DATE	12/21

SHEET CONTENT  
ELEVATIONS

**OAK STREET COMMONS**  
TOWNHOUSE FLOOR PLANS  
TAX MAP: 18-12-23-23 T.L. 2200 & 2800  
FOR  
WILLIAM JOHNSON CONSTRUCTION, INC.  
FLORENCE, OREGON

**Mike McAllister Engineering**  
1155 E. HARLETON ROAD  
MAPLETON, OREGON 97453  
PH: 503-268-4326  
FAX: 503-268-4326





**1ST FLOOR PLAN**  
1/4" = 1'

- CONSTRUCTION NOTES**
- 1) Foundations and walls, masonry, shingles, etc. The authors and location as required by the Building Department for the permit.
  - 2) When installing epoxy set of plywood roof, lay down 1/2" or thicker and have surface prepared with a primer. Use Simpson's High Strength Nails in the manufacturer's direction.
  - 3) Without approval of design engineer, no changes to be made without manufacturer's direction.
  - 4) Verify door opening in existing structure for all doors. Verify existing masonry and concrete for door opening. Verify existing masonry and concrete for door opening. Verify existing masonry and concrete for door opening.

- DOOR SCHEDULE**
- 1) 60" x 72" x 1 3/4" O.D.
  - 2) 3'-0" x 6'-6" SOLID CORE METAL CLAD 20 MIN. FIRE RATING
  - 3) 3'-0" x 6'-6" FIBERGLASS
  - 4) 6'-0" x 6'-6" SLIDING GLASS DOOR
  - 5) 2'-6" x 6'-6" HOLLOW WOOD
  - 6) 2'-0" x 6'-6" HOLLOW WOOD
  - 7) 5'-0" x 6'-6" SLIDING DOOR
  - 8) 5'-0" x 6'-6" SLIDING DOOR
  - 9) 2'-0" x 6'-6" POCKET
  - 10) 5'-0" x 6'-6" BR/OLD

- WINDOWS SCHEDULE**
- 1) 60" W x 60" H FIXED PICTURE
  - 2) 60" W x 12" H FIXED PICTURE, ALL GRID
  - 3) 24" W x 36" H FIXED PICTURE, RAIN GLASS
  - 4) 24" W x 12" H FIXED PICTURE, ALL GRID
  - 5) 36" W x 48" H FIXED PICTURE
  - 6) 36" W x 12" H FIXED PICTURE, ALL GRID
  - 7) 60" W x 42" H FIXED PICTURE
  - 8) 24" W x 30" H SINGLE HING
  - 9) 36" W x 42" H SINGLE HING
  - 10) 36" W x 54" H FIXED PICTURE, TEMPERED
  - 11) 27" W x 12" H FIXED PICTURE, ALL GRID
  - 12) 36" W x 48" H FIXED PICTURE, TEMPERED
  - 13) 48" W x 12" H HORIZONTAL SLIDER
  - 14) 48" W x 12" H FIXED PICTURE, ALL GRID
  - 15) 24" W x 20" H FIXED PICTURE
  - 16) 18" W x 30" H FIXED PICTURE WITH 1/2" CONCRETE, ALL GRID

- ALL WINDOWS TO HAVE GLASS ON THE TOP SECTION ONLY UNLESS OTHERWISE NOTED. TO BE INSTALLED IN ACCORDANCE WITH THE MANUFACTURER'S INSTALLATION INSTRUCTIONS TO BE OBTAINED FROM THE MANUFACTURER.**
1. Concrete min. compressive strength @ 28 days 3000 psi
  2. Exterior min. concrete strength @ 28 days 2000 psi
  3. Exterior min. concrete strength @ 28 days 2000 psi
  4. Exterior min. concrete strength @ 28 days 2000 psi
  5. Exterior min. concrete strength @ 28 days 2000 psi
  6. Exterior min. concrete strength @ 28 days 2000 psi
  7. Exterior min. concrete strength @ 28 days 2000 psi
  8. Exterior min. concrete strength @ 28 days 2000 psi
  9. Exterior min. concrete strength @ 28 days 2000 psi
  10. Exterior min. concrete strength @ 28 days 2000 psi
  11. Exterior min. concrete strength @ 28 days 2000 psi
  12. Exterior min. concrete strength @ 28 days 2000 psi
  13. Exterior min. concrete strength @ 28 days 2000 psi
  14. Exterior min. concrete strength @ 28 days 2000 psi
  15. Exterior min. concrete strength @ 28 days 2000 psi
  16. Exterior min. concrete strength @ 28 days 2000 psi

**SHEET CONTENT**

NO.	DESCRIPTION	DATE
1	1ST FLOOR PLAN	5/23/2008
2	2ND FLOOR PLAN	5/23/2008
3	3RD FLOOR PLAN	5/23/2008
4	4TH FLOOR PLAN	5/23/2008
5	5TH FLOOR PLAN	5/23/2008
6	6TH FLOOR PLAN	5/23/2008
7	7TH FLOOR PLAN	5/23/2008
8	8TH FLOOR PLAN	5/23/2008
9	9TH FLOOR PLAN	5/23/2008
10	10TH FLOOR PLAN	5/23/2008

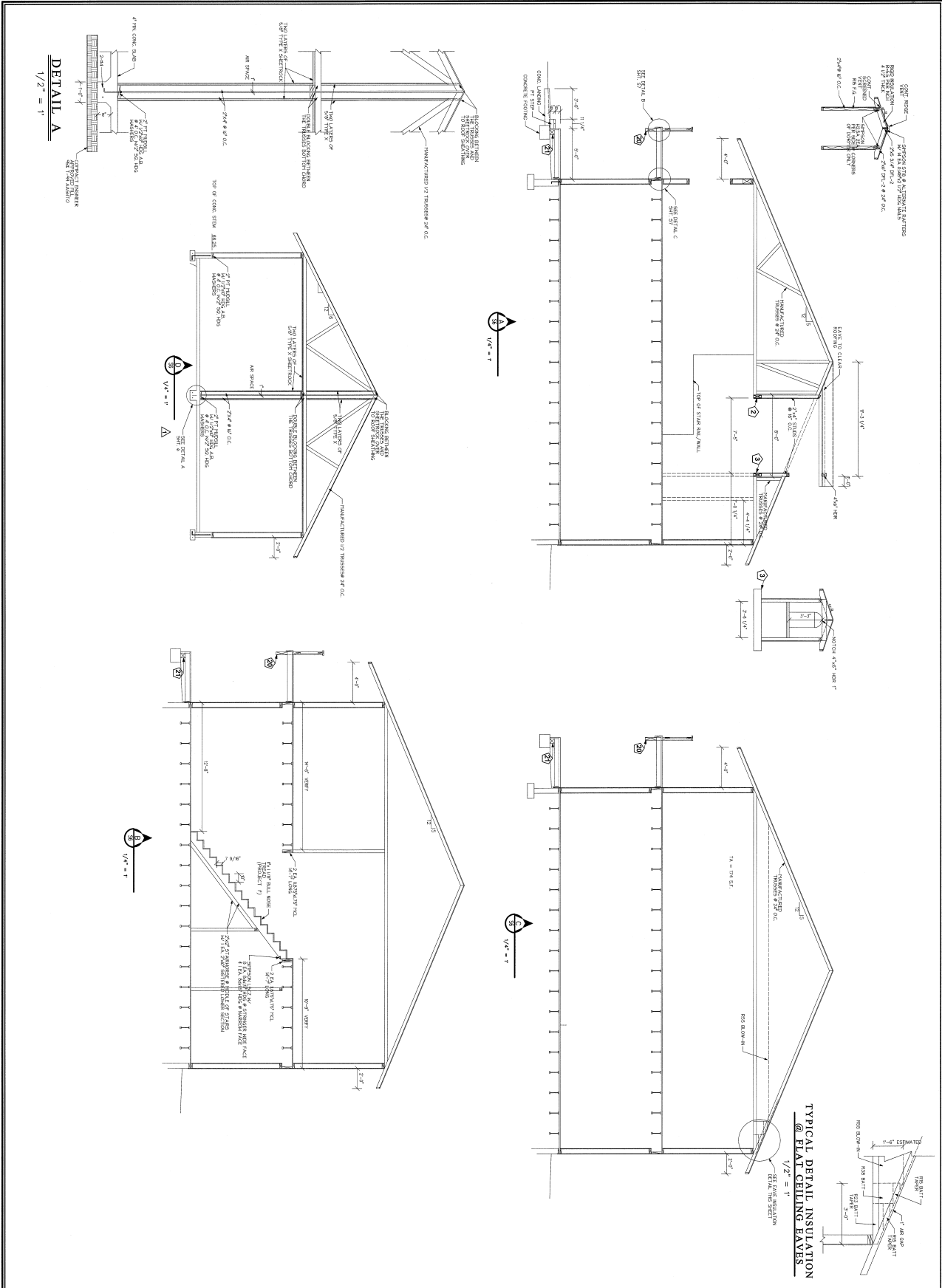
**OAK STREET COMMONS**  
**TOWNHOUSE FLOOR PLANS**  
 TAX MAP: 18-18-23-23 T.L. 2200 & 2800  
 FOR  
**WILLIAM JOHNSON CONSTRUCTION, INC.**  
 FLORENCE, OREGON

**WEEK MALLISTER ENGINEERING**  
 1130 E. MAPLETON ROAD  
 FLORENCE, OREGON 97455  
 PH: 541-266-4322  
 FAX: 541-266-4326



- SPECIFICATIONS**
1. Concrete min. compressive strength @ 28 days 3000 psi
  2. Exterior min. concrete strength @ 28 days 2000 psi
  3. Exterior min. concrete strength @ 28 days 2000 psi
  4. Exterior min. concrete strength @ 28 days 2000 psi
  5. Exterior min. concrete strength @ 28 days 2000 psi
  6. Exterior min. concrete strength @ 28 days 2000 psi
  7. Exterior min. concrete strength @ 28 days 2000 psi
  8. Exterior min. concrete strength @ 28 days 2000 psi
  9. Exterior min. concrete strength @ 28 days 2000 psi
  10. Exterior min. concrete strength @ 28 days 2000 psi
  11. Exterior min. concrete strength @ 28 days 2000 psi
  12. Exterior min. concrete strength @ 28 days 2000 psi
  13. Exterior min. concrete strength @ 28 days 2000 psi
  14. Exterior min. concrete strength @ 28 days 2000 psi
  15. Exterior min. concrete strength @ 28 days 2000 psi
  16. Exterior min. concrete strength @ 28 days 2000 psi





SHEET	NO. 2	NO. 10
	NO. 1	NO. 9
	NO. 3	NO. 7
	NO. 4	NO. 6
	NO. 5	NO. 8
SECTION CONTENT		
SECTIONS & DETAILS		
DATE	SCALE	NO. OF SHEETS
5/3/2018	AS SHOWN	10
DESIGNER	DATE	NO. OF SHEETS
VA 6/6/19	12/71	10

**OAK STREET COMMONS**  
TOWNHOUSE FLOOR PLANS  
TAX MAP: 18-12-23-23 T.L. 2200 & 2800  
FOR  
**WILLIAM JOHNSON CONSTRUCTION, INC.**  
FLORENCE, OREGON

**MIRIE McALLISTER ENGINEERING**  
1301 E. MAPLETON ROAD  
MAPLETON, OREGON 97453  
PH: 541-268-4326  
FAX: 541-268-4326

