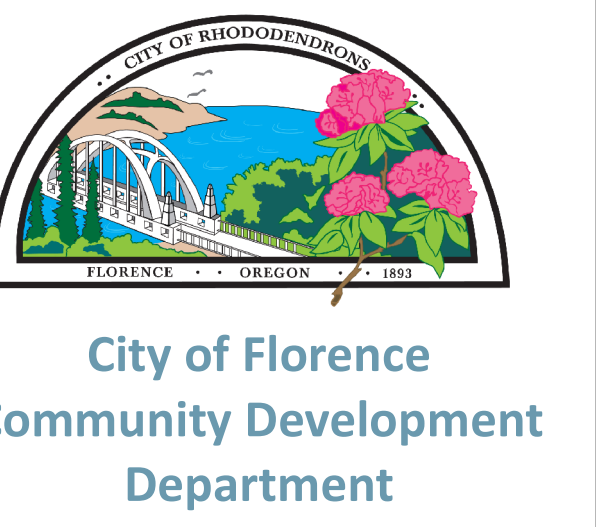


CITY OF
FLORENCE, OREGON
Zoning Map



- City Limits
- Urban Growth Boundary

Zoning Districts

Residential

- Low Density
- Medium Density
- Mobile Home/Manufactured Home
- High Density
- Coast Village

Commercial

- Neighborhood
- Mainstreet Area A
- Mainstreet Area B
- North Commercial
- Commercial
- Highway

Mixed Use

- Old Town Area A
- Old Town Area B
- Old Town Area C
- Waterfront Marine
- Professional Office/Institutional

Industrial

- Marine
- Pacific View Business Park
- Limited Industrial
- Service Industrial

Other

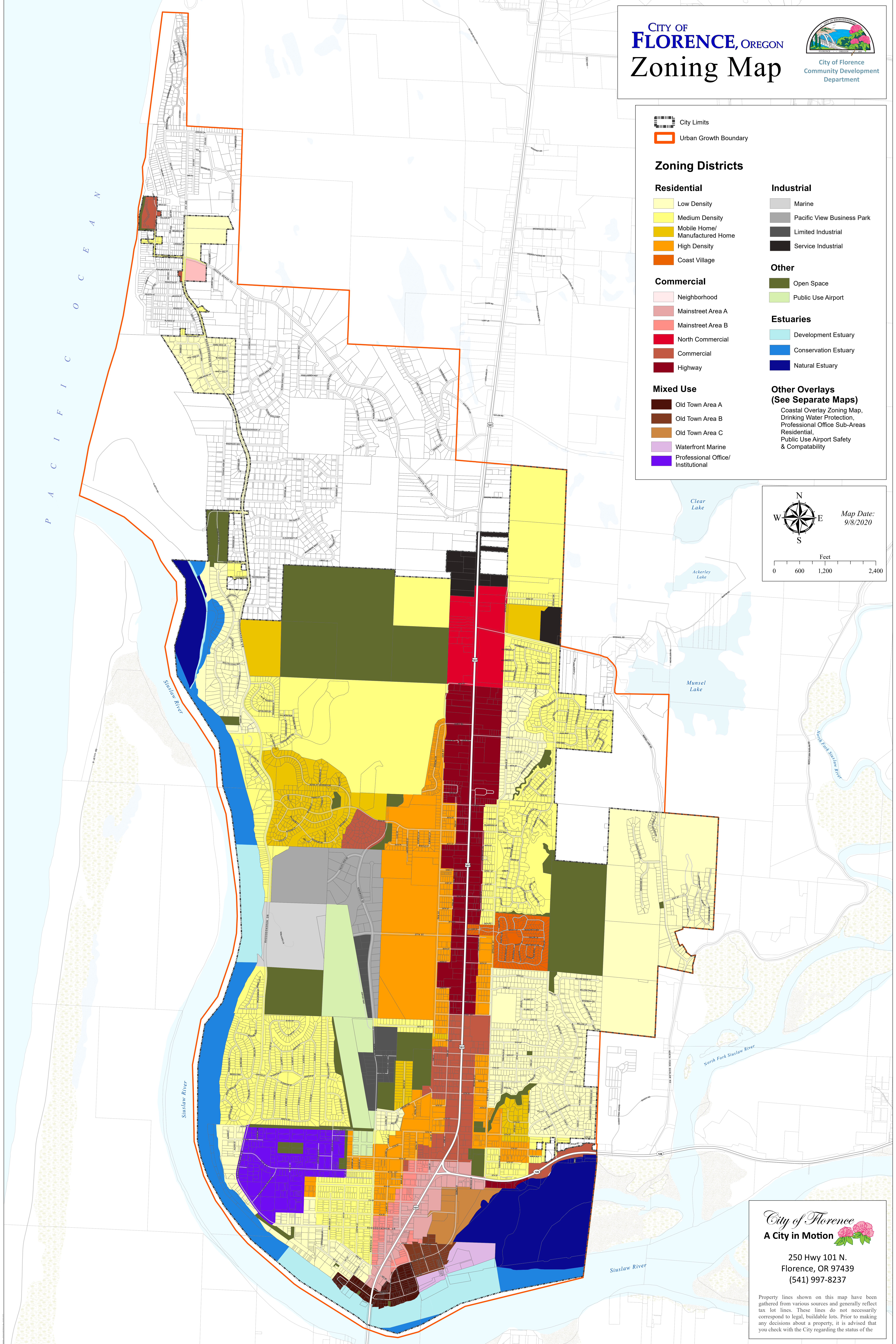
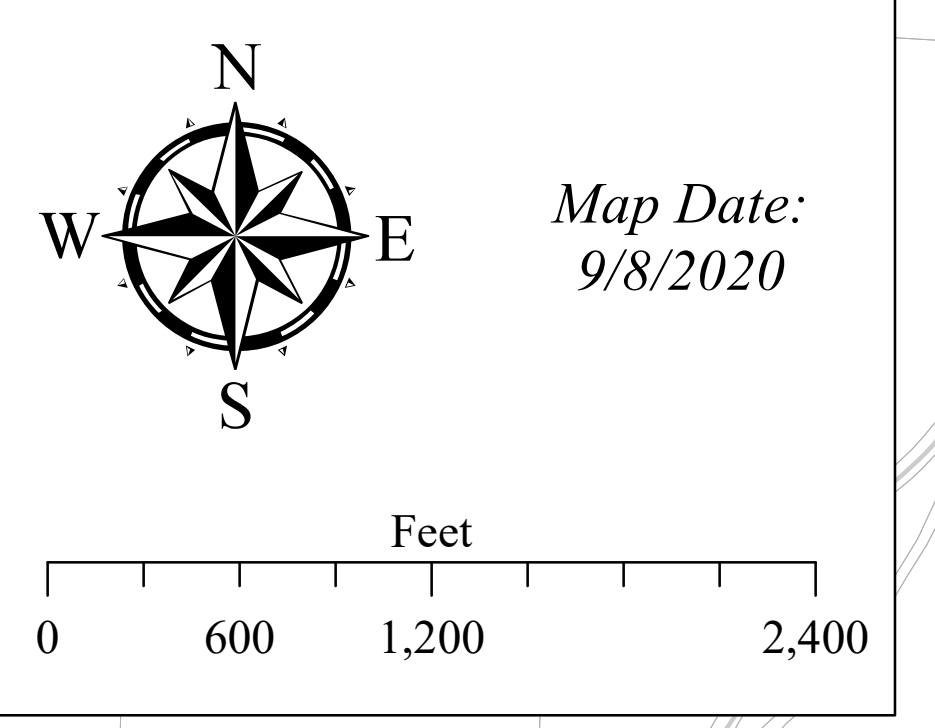
- Open Space
- Public Use Airport

Estuaries

- Development Estuary
- Conservation Estuary
- Natural Estuary

**Other Overlays
(See Separate Maps)**

Coastal Overlay Zoning Map,
Drinking Water Protection,
Professional Office Sub-Areas
Residential,
Public Use Airport Safety
& Compatibility



City of Florence
A City in Motion

250 Hwy 101 N.
Florence, OR 97439
(541) 997-8237

Property lines shown on this map have been gathered from various sources and generally reflect tax lot lines. These lines do not necessarily correspond to legal, buildable lots. Prior to making any decisions about a property, it is advised that you check with the City regarding the status of the