

PLANT SCHEDULE

KEY	QTY. EAST	QTY. WEST	BOTANICAL NAME	COMMON NAME	MIN. SIZE	COMMENTS
TREES						
ACC	-	-	Acer circinatum	Vine Maple	6' ht.	multi-stem, B&B
ALR	-	-	Alnus rubra	Red Alder	2" cal.	Matching, full, B&B
PC	-	-	Pinus contorta 'Contorta'	Shore Pine	6' ht.	Matching, full, B&B
FSM	-	-	Pseudotsuga menziesii	Douglas Fir	10' ht.	Matching, full, B&B

SHRUBS

COS	-	-	Cornus sericea	Red-Osier Dogwood	30" ht.	matching, full
GS	-	-	Gaultheria shallon	Salal	1 gal.	matching, full
MAA	-	-	Mahonia aquifolium	Oregon Grape	5 gal.	matching, full
MC	-	-	Myrica californica	Pacific Wax Myrtle	4' ht.	matching, full
POM	-	-	Polystichum munitum	Sword Fern	3 gal.	matching, full
RHM	-	-	Rhododendron 'Macrophyllum'	Coast Rhododendron	30" ht.	matching, full
RON	-	-	Rosa nutkana	Nootka Rose	3' ht.	matching, full
SAH	-	-	Salix hookeriana	Coast Willow	4' ht.	matching, full
SPD	-	-	Spiraea douglasii	Western spiraea	3-4' ht.	matching, full
SYA	-	-	Symphoricarpos albus	Snowberry	3 gal.	matching, full
VO	-	-	Vaccinium ovatum	Evergreen Huckleberry	5 gal.	matching, full

GROUNDCOVERS AND GRASSES

AU	18" o.c.	18" o.c.	Arctostaphylos uva-ursi	Kinnikinnick	1 gal.	matching, full
CAO	18" o.c.	18" o.c.	Carex donutka	Slough Sedge	1 gal.	matching, full
FC	12" o.c.	12" o.c.	Fragaria chiloensis	Beach Strawberry	4" pots	matching, full
JUE	18" o.c.	18" o.c.	Juncus effusus	Soft Rush	1 gal.	matching, full
MAR	18" o.c.	18" o.c.	Mahonia repens	Creeping Mahonia	1 gal.	matching, full

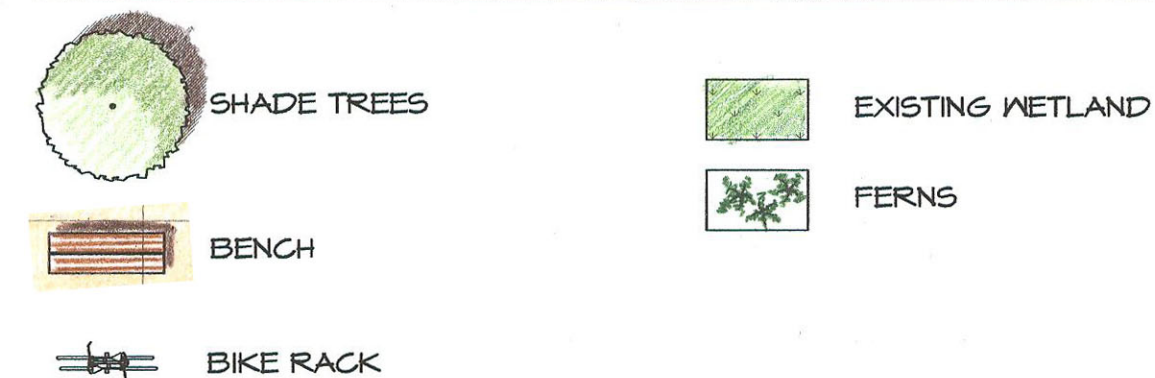
BULBS / PERENNIALS

CQ	-	-	Camassia quamash	Camas	bulb	large
IT	-	-	Iris tenax	Pacific Iris	bulb	large

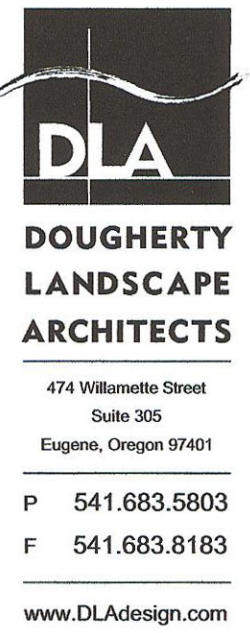
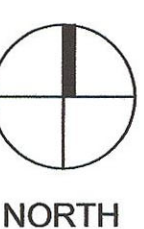
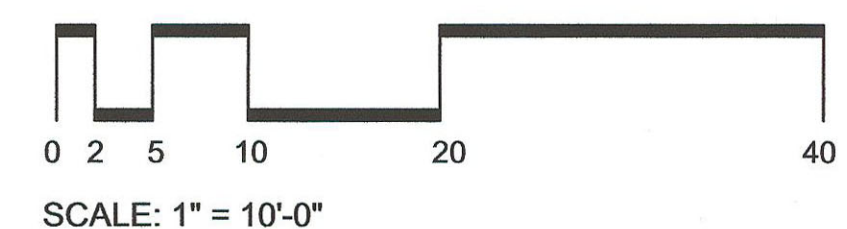
GENERAL NOTES

- NOTIFY LANDSCAPE ARCHITECT 48 HOURS PRIOR TO THE FOLLOWING INSPECTIONS - SEE SPECIFICATIONS:
 - PLANT BED AND STORMWATER FACILITY SUB BASE / EXCAVATION
 - FINISHED GRADING AT PLANT BED AND STORMWATER FACILITIES
 - PLANT MATERIAL ON-SITE INSPECTION AND LAYOUT REVIEW
- SEE SHEET L1.1 FOR EAST SITE AREA LANDSCAPE PLAN.
- SEE SHEET L1.1 FOR ADDITIONAL NOTES.
- SEE CIVIL ENGINEER'S PLANS FOR SITE DESIGN INFORMATION.
- PLANTINGS AS DESIGNED ARE INTENDED TO MEET SPECIFIC REQUIREMENTS, NO SUBSTITUTIONS OR SIZE CHANGES PERMITTED WITHOUT APPROVAL BY LANDSCAPE ARCHITECT
- SEE SPECIFICATIONS FOR ADDITIONAL PLANTING, IRRIGATION AND SOIL PREPARATION REQUIREMENTS.
- PLANT LIST QUANTITIES ARE FOR CONTRACTOR CONVENIENCE ONLY. VERIFY ACTUAL QUANTITIES ON PLAN.

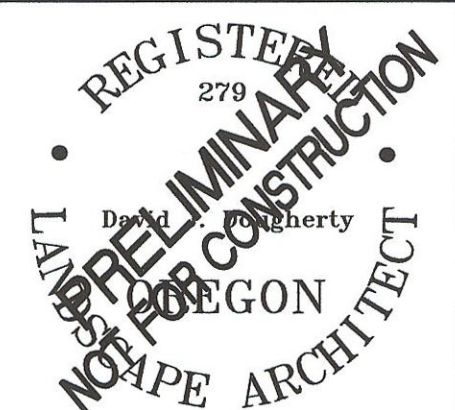
PLANTING LEGEND



SIUSLAW INTERPRETIVE
WAYSIDE: WAYSIDE WEST
LANDSCAPE PLAN



PROJECT TITLE:
SIUSLAW RIVER BRIDGE INTERPRETIVE SITE
CITY OF FLORENCE, P.O. BOX 340
FLORENCE, OR 97439



Branch Engineering, Inc.
310 Fifth Street
Springfield, Oregon 97477
(541) 746-0637 FAX (541) 746-0389
branchadmin@branchengineering.com
Civil • Structures • Transportation • Surveying

DATE	NOV 2011
SCALE	
DRAWN BY	RR
DESIGNER	DJD/RR
CHECKED BY	DJD
PROJECT NUMBER	11-001B

SHEET NO.
L2.1
OF ____ SHEET(S)