



**ARMSTRONG STEEL CORPORATION**  
**ON TIME. ON BUDGET.**

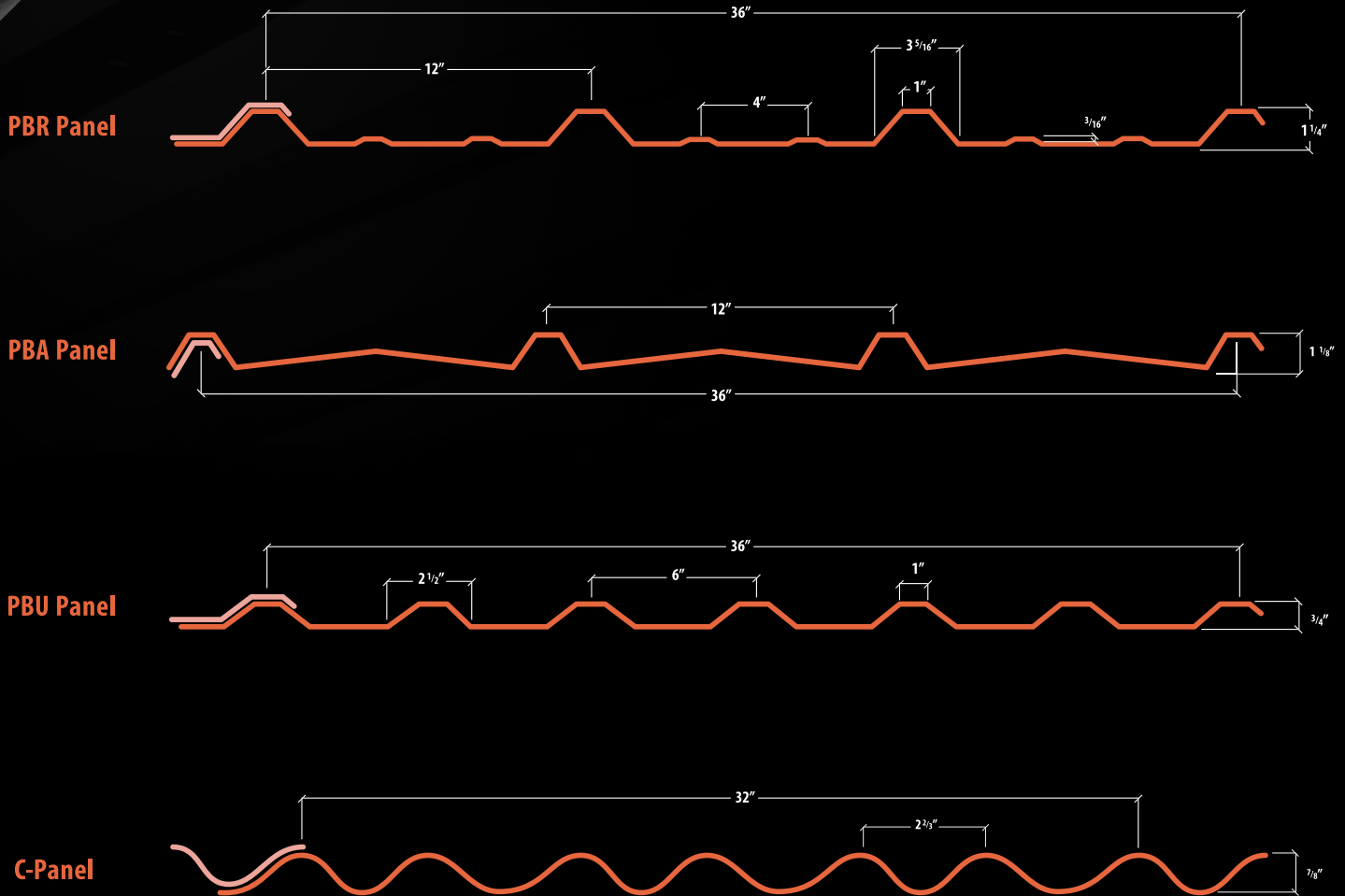


**ARMSTRONG WALL SYSTEMS**

**i Interactive PDF**  
Click the Photos Inside to See More Online!

# Armstrong's Wall Systems

With a comprehensive selection of exterior wall panel offerings, Armstrong has the wall system for any project. All Armstrong wall panels have a purlin bearing leg which lends to the increased weather tightness of our systems as well as ease of installation. When used with our double beaded mastic tape and Armstrong's premium fastener system, you'll be hard pressed to find a more weather tight wall system on the market.





## Wall Insulation

Whether you're using your building for hay storage, religious services, or a complex commercial facility, Armstrong's insulation systems provide our end users with the best solutions on the market. Energy conservation is an important part of building design and Armstrong Steel is committed to providing budget friendly, environmentally conscious solutions. From a simple vapor barrier to a heavy duty LEED certified R-50 high efficiency insulation, Armstrong's broad product line has you covered with a host of cost effective solutions.

## Armstrong's Windows & Doors

Armstrong Steel provides door and window solutions that not only function well but also look great too. Your building is about more than just getting out of the weather. You need to be able to rely on your building. Don't cut corners on your windows and doors! Armstrong offers a full line of self framing/self flashing doors and windows that are available in insulated and non-insulated models. Need a personnel door with security glass? How about a High-R overhead garage door with a high lift track? Armstrong Steel has the accessories best suited for the job.

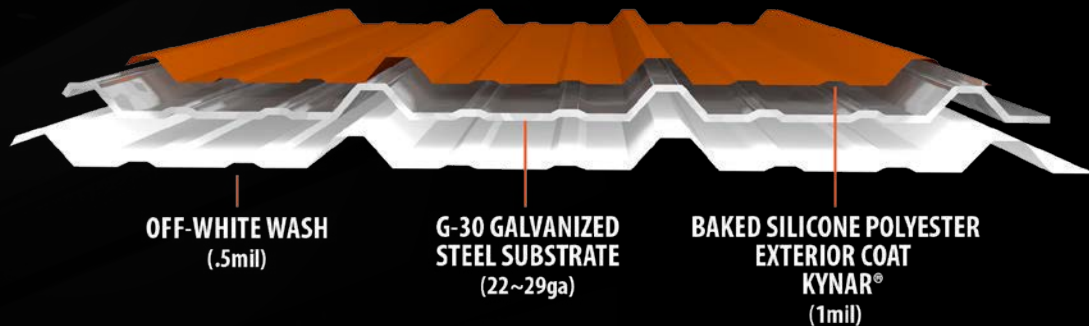


A complete door and window system designed specifically for your building goes a long way to making your project memorable for anyone that sees it. If you have an idea of your own or perhaps you need to match an adjacent building with your own windows and doors, Armstrong's expert project managers and engineers can make sure your Ideas and dreams become a reality.



## Polyester and Kynar® Panel Coatings

Armstrong's metal wall panels come as a standard 26 gauge and are coated in a silicone/polyester coating. Kynar is also available upon request. **Silicon Polyester (SMP)** finishes consist of a 1 mil. baked on Silicone Polyester exterior surface, on G30 Galvanized steel. The interior surface is coated with an off-white 0.5 mil. Wash coat. SMP finishes are available in a variety of colors. **Kynar** finishes consist of a 1 mil. Kynar-based coating applied to the exterior of AZ55 Galvalume steel. The interior surface is coated with an off-white 0.5 mil. Wash coat. Kynar coating is available in a variety colors.



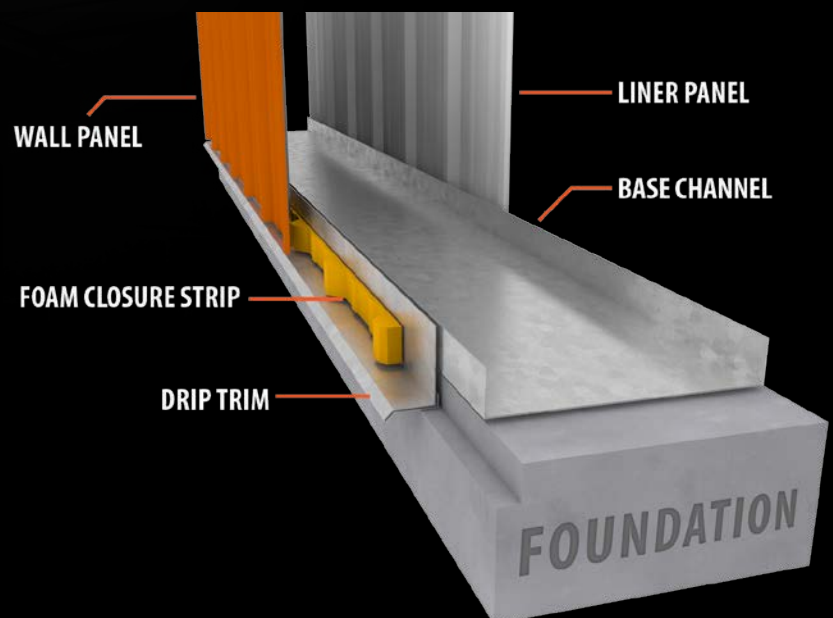
## Armstrong Steel Warranty

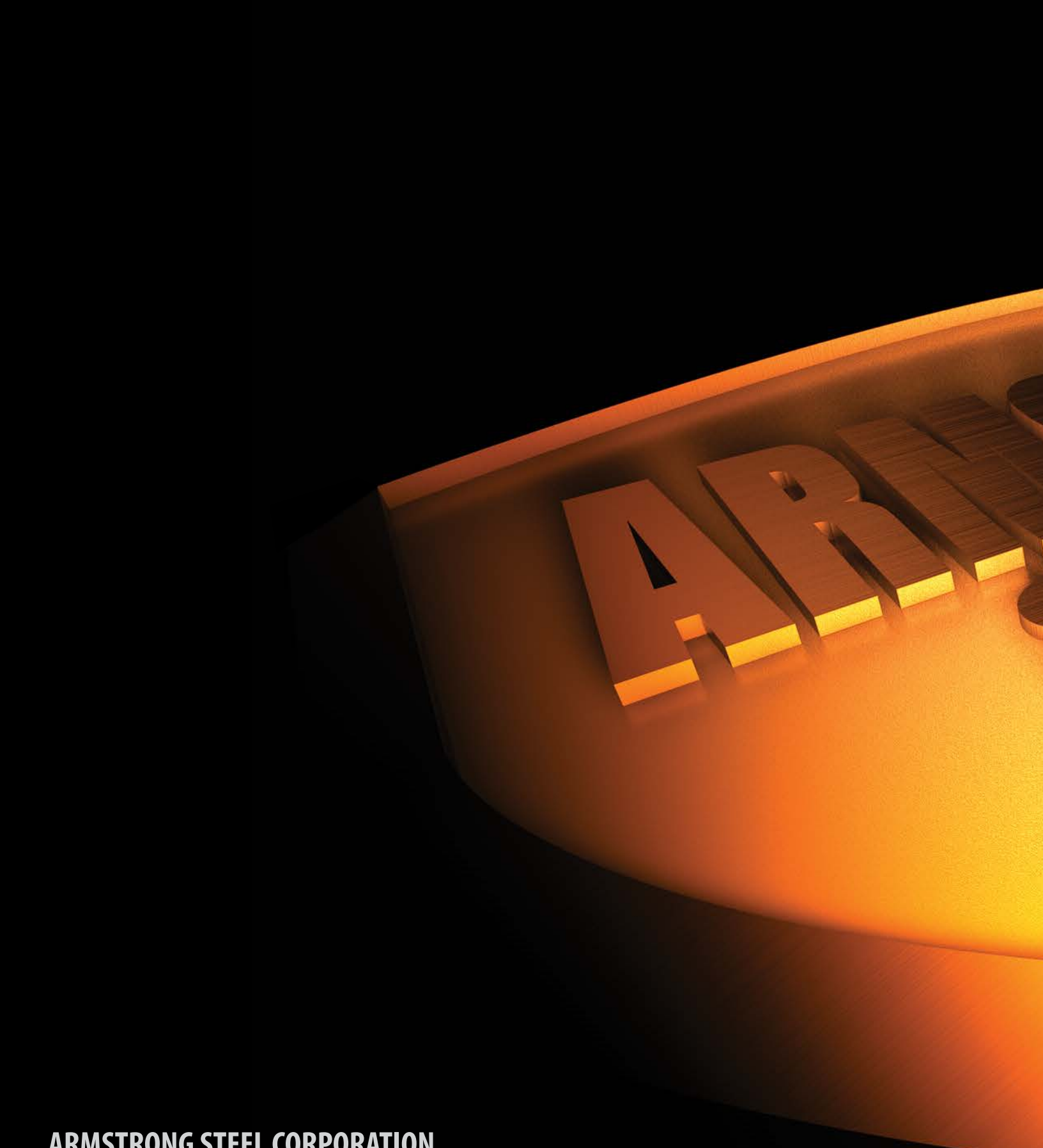
Because of Armstrong's commitment to quality products, we can offer the best warranties available today! A 40 year warranty on wall panels exemplifies this commitment and allows our customers to rest assured that their building will stand the test of time. Of course some limitations and restrictions apply, contact your Armstrong Steel retailer or our corporate office for details.



## Base Construction [w/optional Liner Panel]

The formed base trim employed at the bottom the wall panel provides a colorful steel edge on which the wall panel rests. This and the optional 1.5" concrete notch create a barrier to insects and rodents. Combined with the optional rubberized foam closure sealing strip and mastic tape this system also creates an unbeatable barrier to the elements. This diagram is shown with an additional feature: the Armstrong Steel Liner Panel System.





**ARMSTRONG STEEL CORPORATION**  
**WWW.ARMSTRONGSTEELBUILDINGS.COM**



Toll Free: 800.345.4610 Fax: 720.230.7266

Corporate Headquarters:  
2 Inverness Dr E  
Centennial, CO 80112

