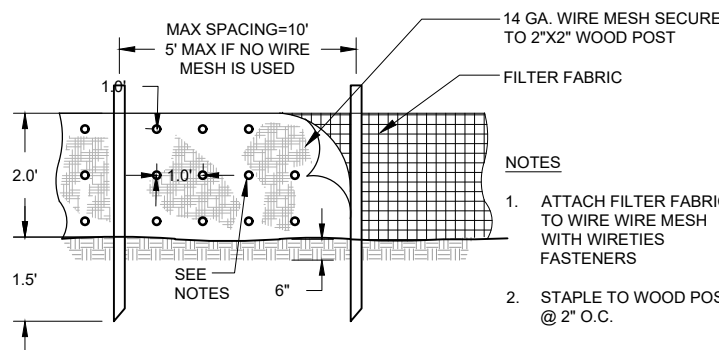


**GENERAL NOTES: EROSION CONTROL**

1. EROSION CONTROL FACILITIES AS SHOWN ARE OF MINIMUM REQUIREMENT AND SHOWN FOR CLARITY ONLY. CONTRACTOR IS RESPONSIBLE FOR THE IMPLEMENTATION, CONSTRUCTION AND MAINTENANCE OF THIS OR ANY ADDITIONAL EROSION CONTROL AS MAY BE REQUIRED THROUGHOUT THE COURSE OF THE PROJECT.
2. CONTRACTOR SHALL BE RESPONSIBLE FOR CLEANING DRAINAGE AND EROSION CONTROL FACILITIES AS REQUIRED DURING THE COURSE OF THE PROJECT.
3. EROSION CONTROL STRUCTURES BELOW SODDEN AREAS MAY BE REMOVED ONCE SOD AND FINAL LANDSCAPING IS IN PLACE. EROSION CONTROL STRUCTURES BELOW SEEDED AREAS MUST REMAIN IN PLACE UNTIL THE ENTIRE AREA HAS ESTABLISHED A MATURE COVERING OF HEALTHY VEGETATION.
4. INLET PROTECTION DEVICES SHALL BE INSTALLED IMMEDIATELY UPON INDIVIDUAL INLETS BECOMING FUNCTIONAL FOR NEW AND PRIOR TO START OF CONSTRUCTION ON EXISTING INLETS.
5. MAINTAIN ON THE SITE OR HAVE READILY AVAILABLE SUFFICIENT OIL AND GREASE ABSORBING MATERIALS TO CONTAIN AND CLEANUP FUEL OR CHEMICAL SPILLS AND LEAKS.
6. FUGITIVE DUST BLOWING FROM THE SITE SHALL BE CONTROLLED BY SPRAYING WATER AND DUST CONTROL POLYMERS, AS NEEDED, ON DRY AREAS OF THE SITE. THE USE OF MOTOR OILS AND OTHER PETROLEUM BASED OR TOXIC LIQUIDS FOR DUST SUPPRESSION OPERATIONS IS ABSOLUTELY PROHIBITED.
7. NO RUBBISH, TRASH, GARBAGE OR OTHER SUCH MATERIALS SHALL BE DISCHARGED INTO DRAINAGE DITCHES OR WATERS OF THE STATE.
8. IF SOIL STOCKPILING IS EMPLOYED ON THE SITE, FILTER FENCES SHALL BE USED TO HELP CONTAIN THE SEDIMENT TO THE STOCKPILE AREA.
9. ALL TEMPORARY EROSION AND SEDIMENT CONTROL MEASURES SHALL BE DISPOSED OF WITHIN 30 DAYS AFTER FINAL STABILIZATION. FINAL STABILIZATION HAS OCCURRED WHEN ALL SOIL DISTURBING ACTIVITIES ARE COMPLETED AND A UNIFORM PERENNIAL VEGETATIVE COVER WITH A DENSITY OF 70% OF THE COVER FOR UNPAVED AREAS AND AREAS NOT COVERED BY PERMANENT STRUCTURES HAS BEEN EMPLOYED.
10. CONTRACTOR SHALL BE RESPONSIBLE FOR ADJUSTING THE EROSION CONTROL MEASURES ( SILT FENCES, STRAW BALES, ETC.) DUE TO GRADE CHANGES DURING THE DEVELOPMENT OF THE PROJECT.
11. ALL EROSION CONTROL MEASURES SHALL BE MAINTAINED IN FULLY FUNCTIONAL CONDITION UNTIL FINAL STABILIZATION OF THE SITE. ALL EROSION AND SEDIMENTATION CONTROL MEASURES SHALL BE CHECKED BY A QUALIFIED PERSON AT LEAST ONCE EVERY SEVEN CALENDAR DAYS AND WITHIN 24 HOURS OF THE END OF A RAINFALL EVENT, AND SHOULD BE CLEANED AND REPAIRED IN ACCORDANCE WITH THE FOLLOWING.
  - A. INLET PROTECTION DEVICES AND BARRIERS SHALL BE FIXED OR REPLACED IF THEY SHOW SIGNS OF CLOGGING.
  - B. ALL SEEDED AREAS SHALL BE CHECKED REGULARLY TO SEE THAT A GOOD STAND IS MAINTAINED. AREAS SHOULD BE FERTILIZED, RESEEDED, AND WATERED AS NEEDED.
  - C. FILTER FENCES SHALL BE REPAIRED TO THEIR ORIGINAL CONDITIONS IF DAMAGED. SEDIMENT SHALL BE REMOVED FROM THE SILT FENCES WHEN IT REACHES ONE-THIRD TO ONE-HALF THE HEIGHT OF THE SILT FENCE.
  - D. ANY TEMPORARY PARKING AND STORAGE AREAS SHALL BE KEPT IN GOOD CONDITION (SUITABLE FOR PARKING AND STORAGE). THIS MAY REQUIRE TOP DRESSING OF THE TEMPORARY PARKING AREAS AS CONDITIONS DEMAND.
  - E. OUTLET STRUCTURES IN THE SEDIMENTATION BASINS SHALL BE MAINTAINED IN OPERATIONAL CONDITIONS AT ALL TIMES. SEDIMENT IN THE SEDIMENTATION BASINS SHALL NOT EXCEED THE SEDIMENTATION CLEANOUT LEVEL.

**EROSION + SEDIMENT CONTROL NOTES**

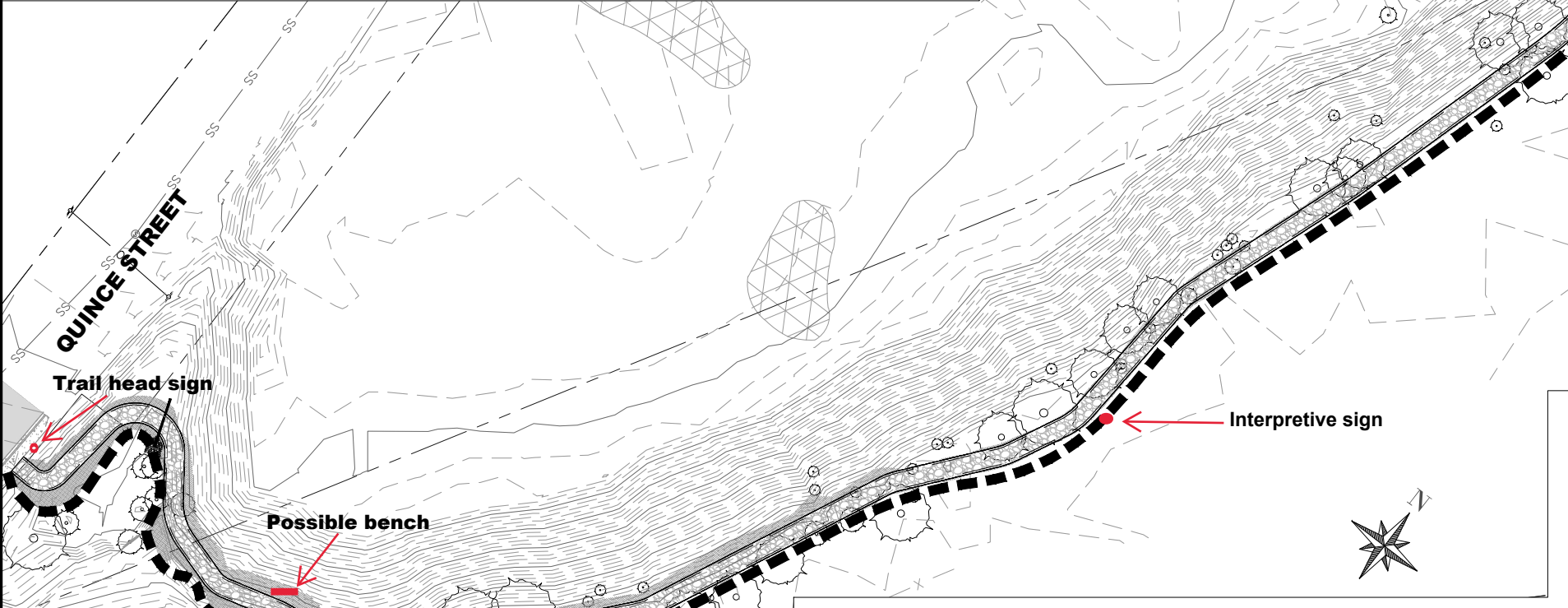
1. PLACE SWALE TYPE SEDIMENT BARRIERS ON GENTLY SLOPING BANK SEGMENTS. WHERE WATER CAN POND AND ALLOW SEDIMENT TO SEPARATE FROM RUNOFF.
2. SANDBAGS OF EITHER BURLAP OR WOVEN "GEOTEXTILE" FABRIC, ARE FILLED WITH GRAVEL LAYERS PACKED TIGHTLY.
3. LEAVE A ONE SANDBAG GAP IN THE TOP ROW TO PROVIDE A SPILLWAY FOR THE OVERFLOW.
4. INSPECT BARRIERS AND REMOVE SEDIMENT AFTER EACH STORM EVENT. SEDIMENT AND GRAVEL MUST BE REMOVED FORM THE TRAVELED WAY IMMEDIATELY.
5. SEDIMENT BARRIERS TO REMAIN IN PLACE AND MAINTAINED BY CONTRACTOR UNTIL ALL DISTURBED SOILS HAVE BEEN STABILIZED.
6. REFER TO LANDSCAPE PLANS FOR FINAL VEGETATIVE COVER.



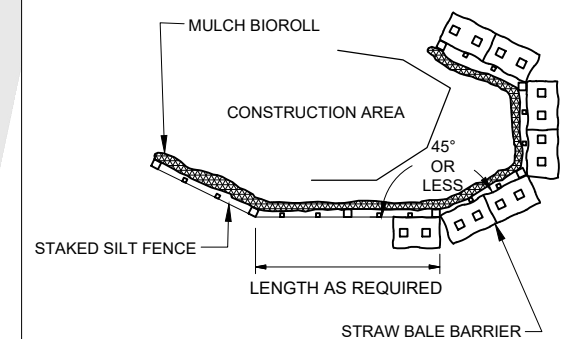
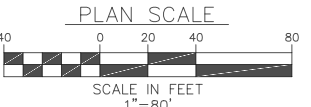
**1 STAKED SILT FENCE DETAIL (ELEVATION)**  
C10 N.T.S.

**LEGEND:**

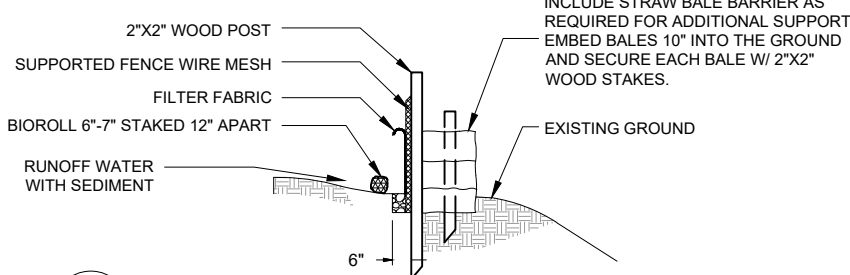
SILT FENCE



**1 EROSION CONTROL PLAN VIEW**  
C10



**2 STAKED SILT FENCE DETAIL (PLAN)**  
C10 N.T.S.



**3 STAKED SILT FENCE DETAIL (SECTION)**  
C10 N.T.S.

**Exhibit E**

REGISTERED PROFESSIONAL ENGINEER  
89522PE  
*Sean Lloyd*  
OREGON SEP 11, 2018  
SEAN DEAN LLOYD  
RENEWS: 12/31/24

**Civil West**  
Engineering Services, Inc.  
486 E. ST.  
COOS BAY, OR 97420  
541-266-8601  
www.civilwest.com

REV.	DATE	DESCRIPTION	BY

DESIGNED BY: JRP  
DRAWN BY: JRP  
CHECKED BY: SDL  
PROJECT NO: 1503-022

CITY OF FLORENCE  
LANE COUNTY  
SIUSLAW ESTUARY TRAIL  
EROSION CONTROL PLAN  
C10  
MARCH, 2023

DATE: 3/13/23 FILE: C:\CW\_Projects\1503-022\_Florence - Event Center Trail Improvements\04\_Final Design\Drawings\DWG\Design\_Working-Sources\_Street\_Modify.dwg