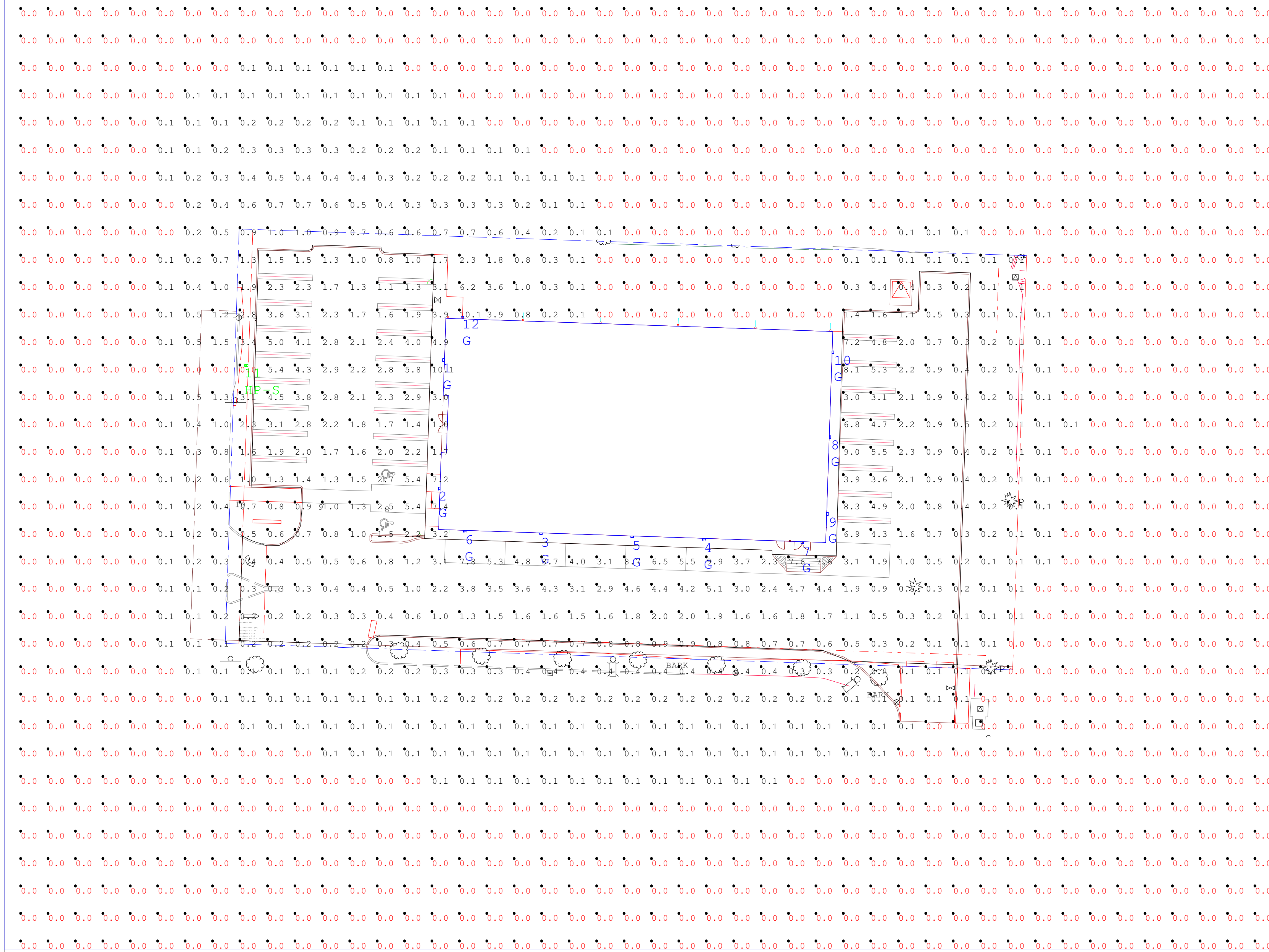


Exhibit J



LumNo	Label	Z
1	G	12
2	G	12
3	G	12
4	G	12
5	G	12
6	G	12
7	G	12
8	G	12
9	G	12
10	G	12
11	HP-S	27
12	G	12

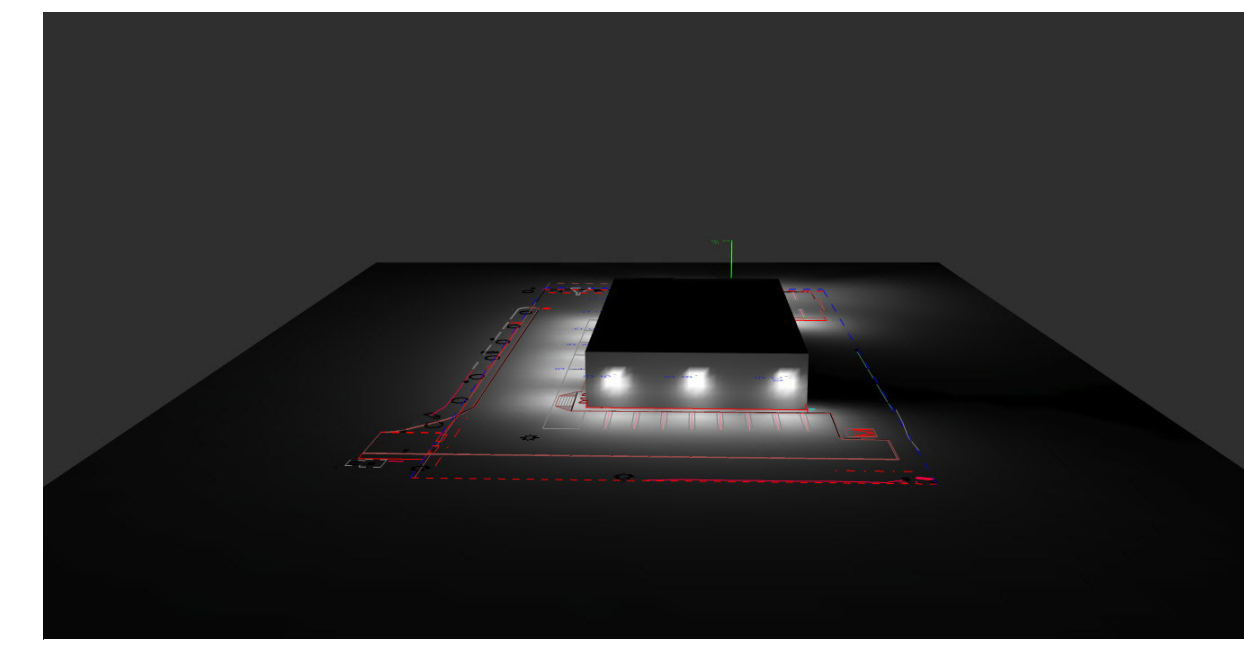
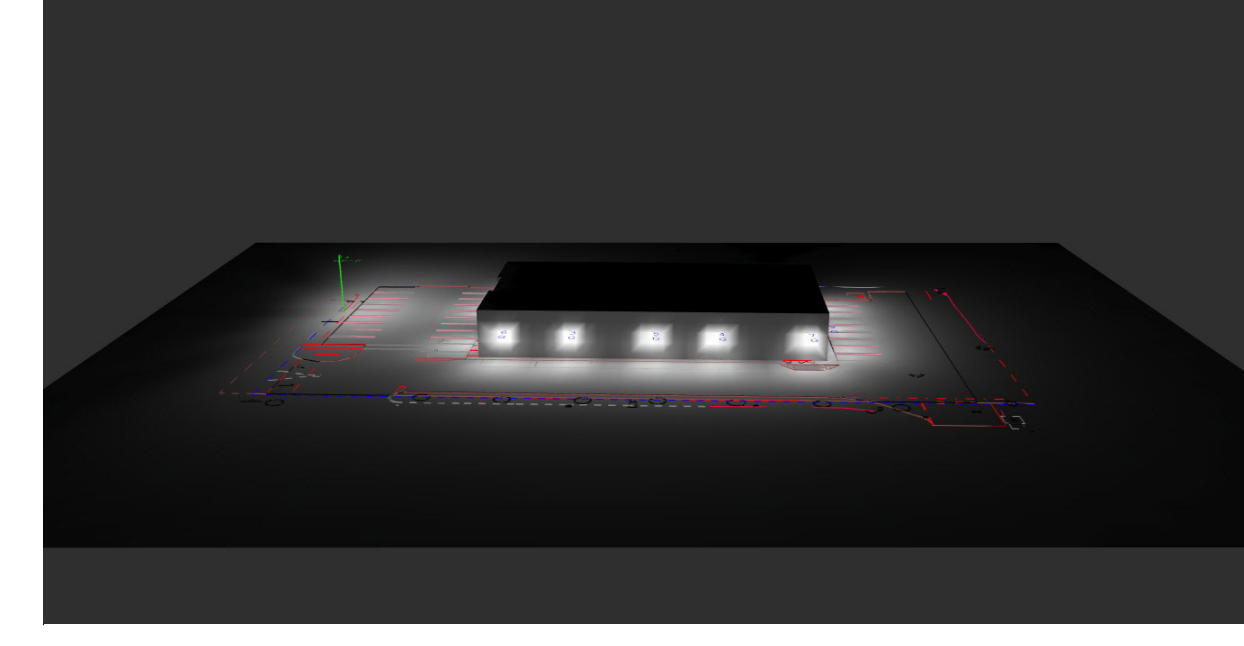
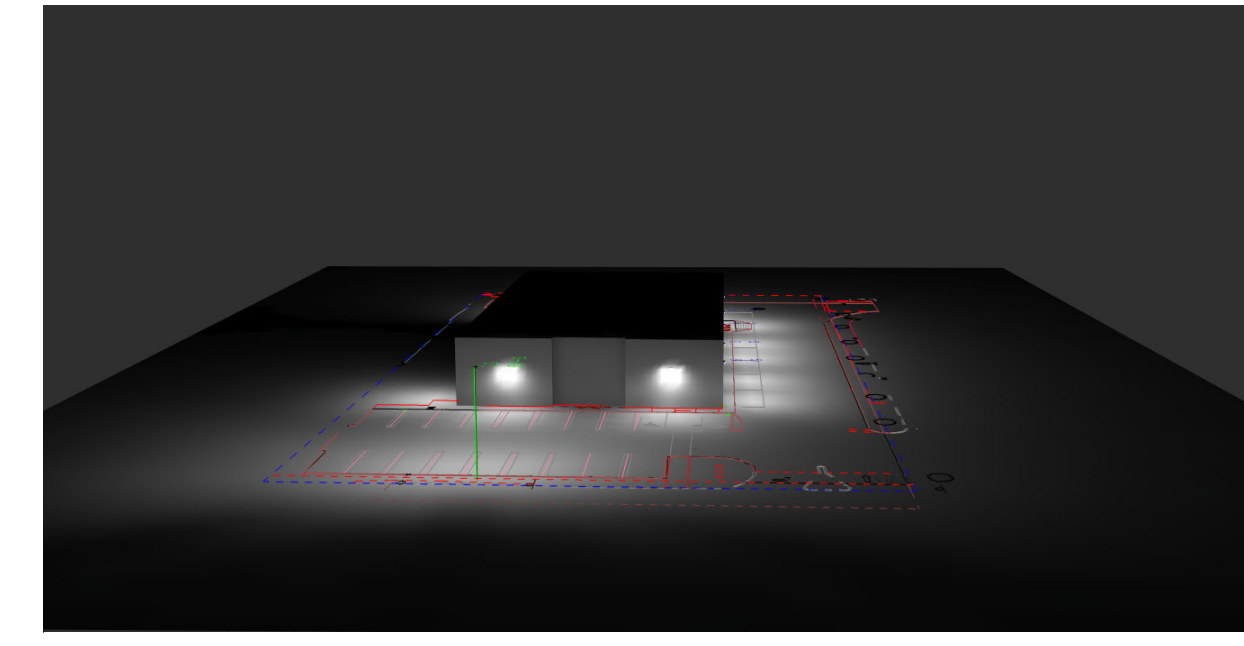
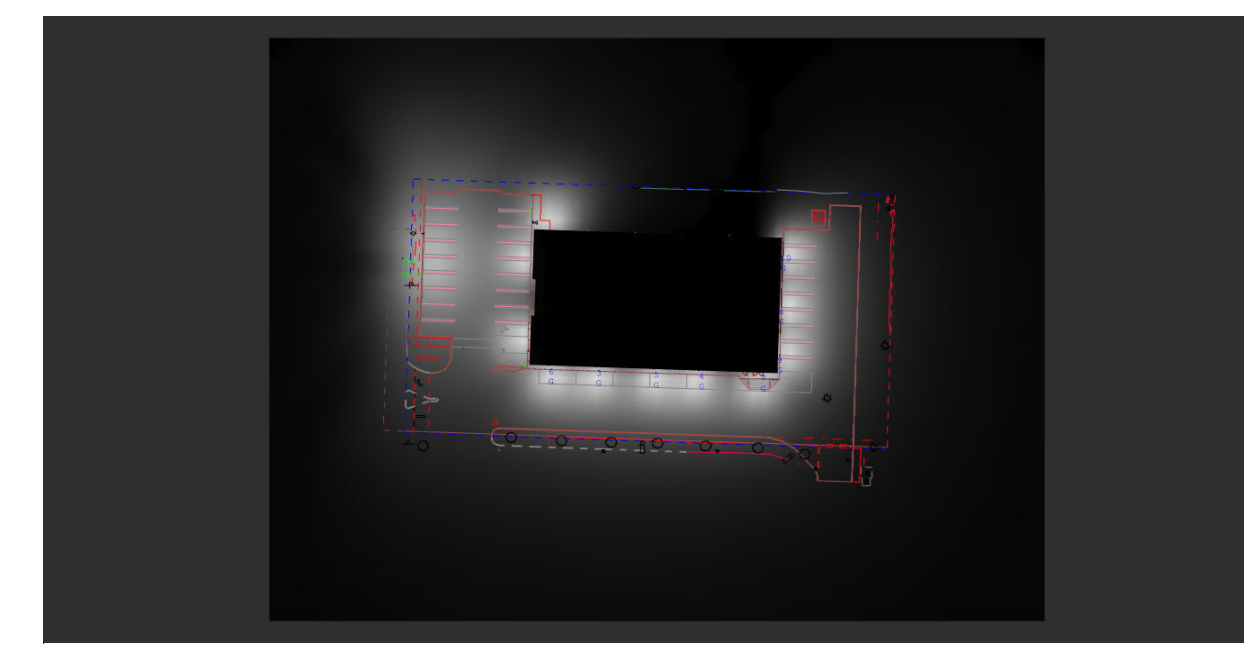
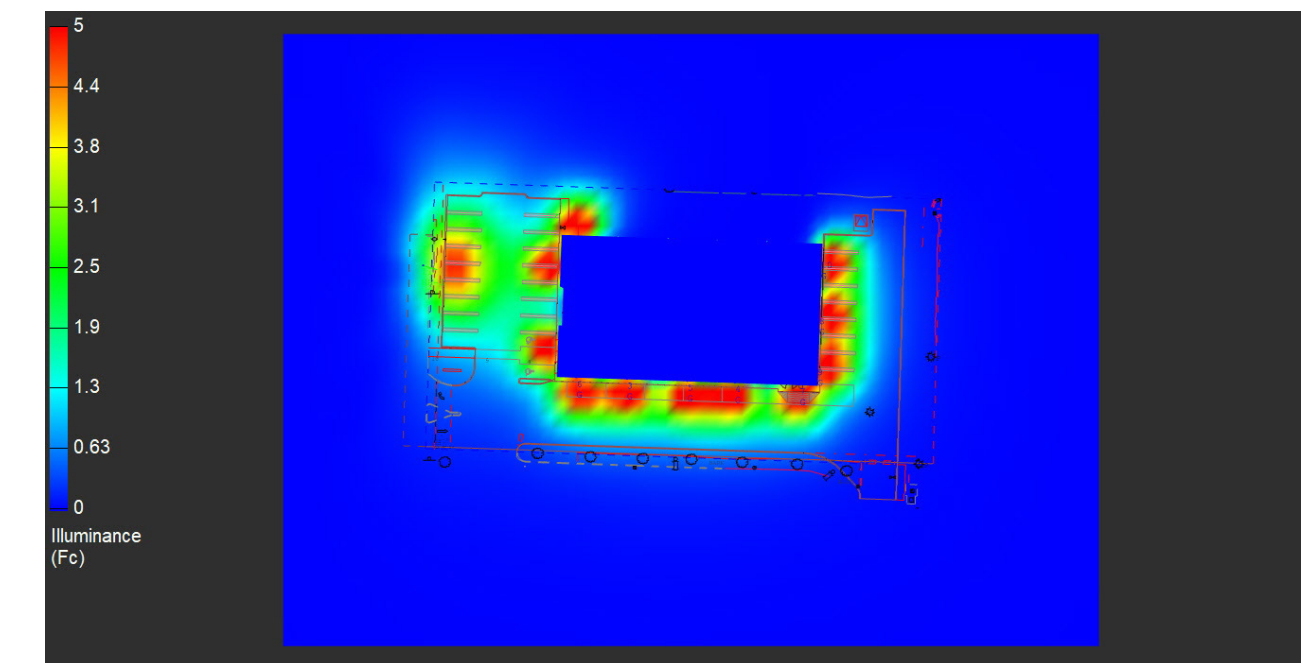
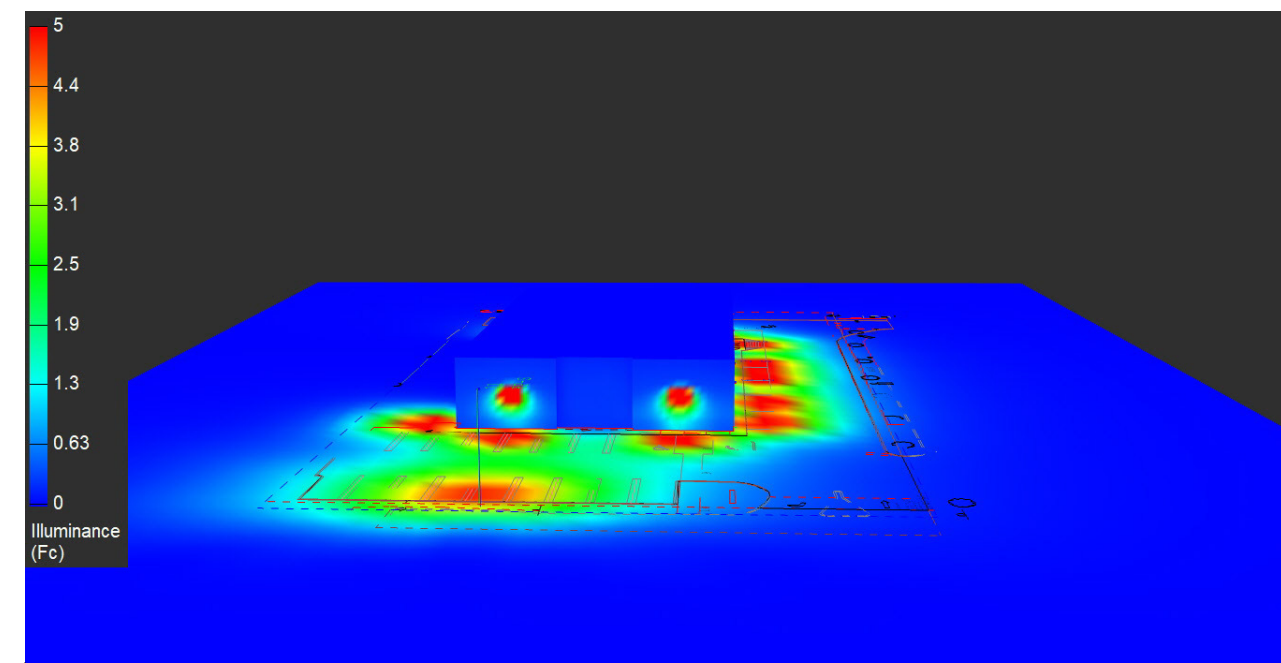
Luminaire Schedule								
Symbol	Qty	Label	Arrangement	Description	LLF	Luminaire Lumens	Luminaire Watts	Total Watts
	11	G	Single	LEDs - WP4053 Wall Pack	0.950	5359	39.8284	438.112
	1	HP-S	Single	LEDs - AL1211SH - TS - SL075-150W-H3-40K-Shielded	0.950	17436	147.901	147.901

Calculation Summary								
Label	CalcType	Units	Avg	Max	Min	Avg/Min	Max/Min	
Site	Illuminance	Fc	0.43	10.1	0.0	N.A.	N.A.	
Parking Lot	Illuminance	Fc	2.27	9.9	0.1	22.70	99.00	

Notes:

Plan Notes:
 Calculations at Ground Level (10' x 10' Grid Spacing). Refer to luminaire location summary for mounting heights of each fixture. Pole mounted fixtures include a 2ft concrete base. Mounting heights indicated on luminaire location summary is a total A.F.G. height.



General Notes:
 Due to changing lighting ordinances it is the contractors responsibility to submit the site photometrics & luminaire specs to the local inspector before ordering to ensure this plan complies with local lighting ordinances. This lighting design is based on information supplied by others. Changes in electrical supply, area geometry & objects within the lighted area may produce illumination values different from the predicted results shown on this layout. This layout is based on .IES files that were lab tested or computer generated, actual results may vary.



#	Date	Comments
Revisions		

Drawn By: Brent M. Finley, LC
 Checked By:
 Date: 6/12/2023
 Scale:

Dollar General -
 Florence OR 25719

Luminaire Schedule							
Symbol	Qty	Label	Arrangement	Lumens/Lamp	LLF	Lum. Watts	Description
	11	G	Single	5346.7	0.950	39.8284	LEDS - WP4053 Wall Pack
	1	HP-S	Single	17478	0.950	147.901	LEDS - AL1211SH - TS - SL075-150W-H3-40K- Shielded

Numeric Summary							
Label	CalcType	Units	Avg	Max	Min	Avg/Min	Max/Min
Site	Illuminance	Fc	0.43	10.2	0.0	N.A.	N.A.
Parking Lot	Illuminance	Fc	2.32	9.5	0.1	23.20	95.00

Luminaire Location Summary		
LumNo	Label	Z
1	G	16.5
2	G	16.5
3	G	12
4	G	12
5	G	12
6	G	12
7	G	12
8	G	12
9	G	12
10	G	12
11	HP-S	20
12	G	12

Notes:

Plan Notes:

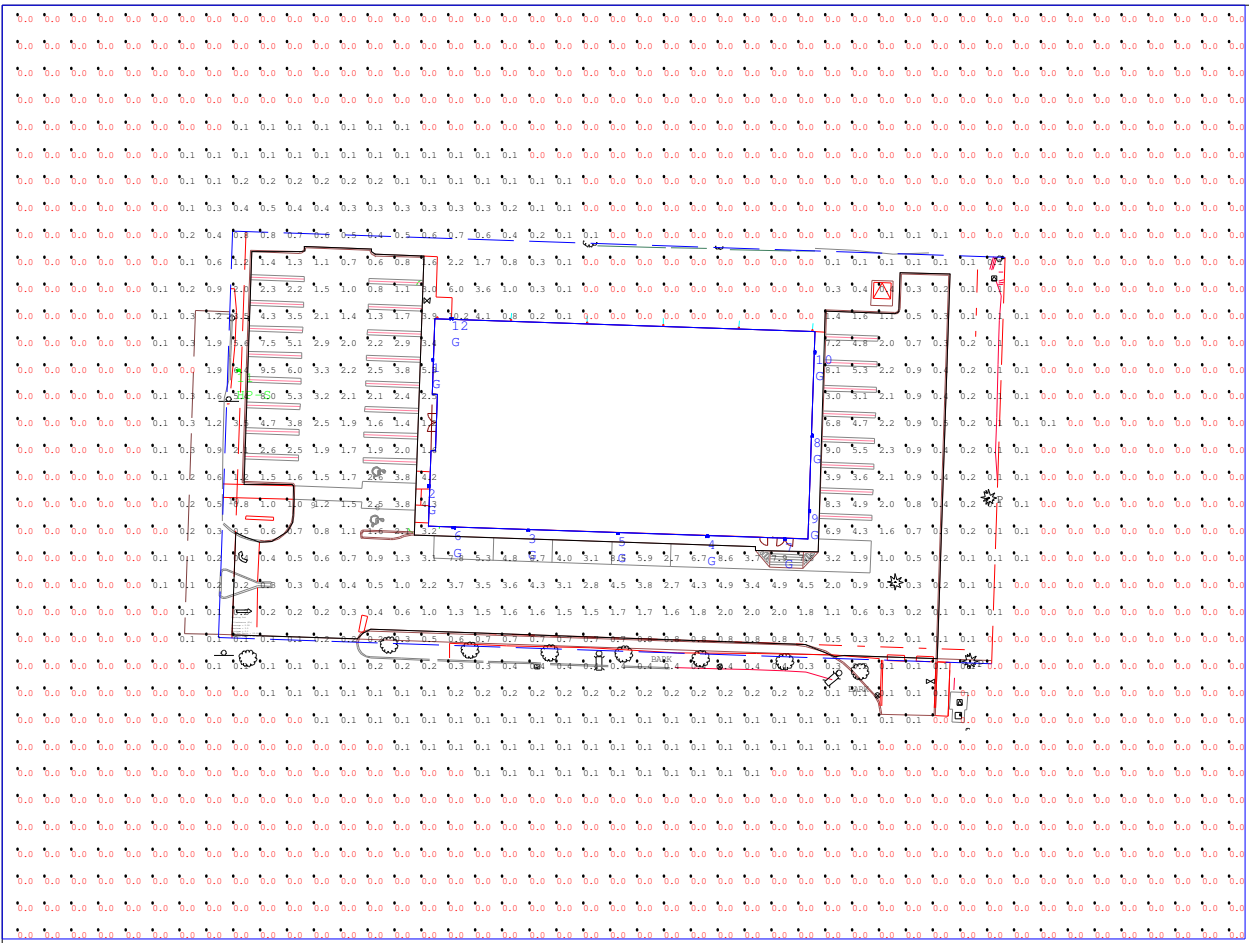
Calculations at Ground Level (10' x 10' Grid Spacing). Refer to luminaire location summary for mounting heights of each fixture. Pole mounted fixtures include a 2ft concrete base. Mounting heights indicated on luminaire location summary is a total A.F.G. height.

General Notes:

Due to changing lighting ordinances it is the contractors responsibility to submit the site photometrics & luminaire specs to the local inspector before ordering to ensure this plan complies with local lighting ordinances. This lighting design is based on information supplied by others. Changes in electrical supply, area geometry & objects within the lighted area may produce illumination values different from the predicted results shown on this layout. This layout is based on .IES files that were lab tested or computer generated, actual results may vary.

Project name: Dollar General Florence OR 25719 Lighting Layout Prepared for: Capital Growth Buchalter Prepared by: Brent M. Finley, LC	NLES - INC. N8874 Fire Lane 1 Menasha, WI 54952 PH 920-840-6054 / FAX 920-840-6424 www.nlesinc.com
---	---





Luminaire Location Summary		
LumNo	Label	Z
1	G	16.5
2	G	16.5
3	G	12
4	G	12
5	G	12
6	G	12
7	G	12
8	G	12
9	G	12
10	G	12
11	HP-S	20
12	G	12

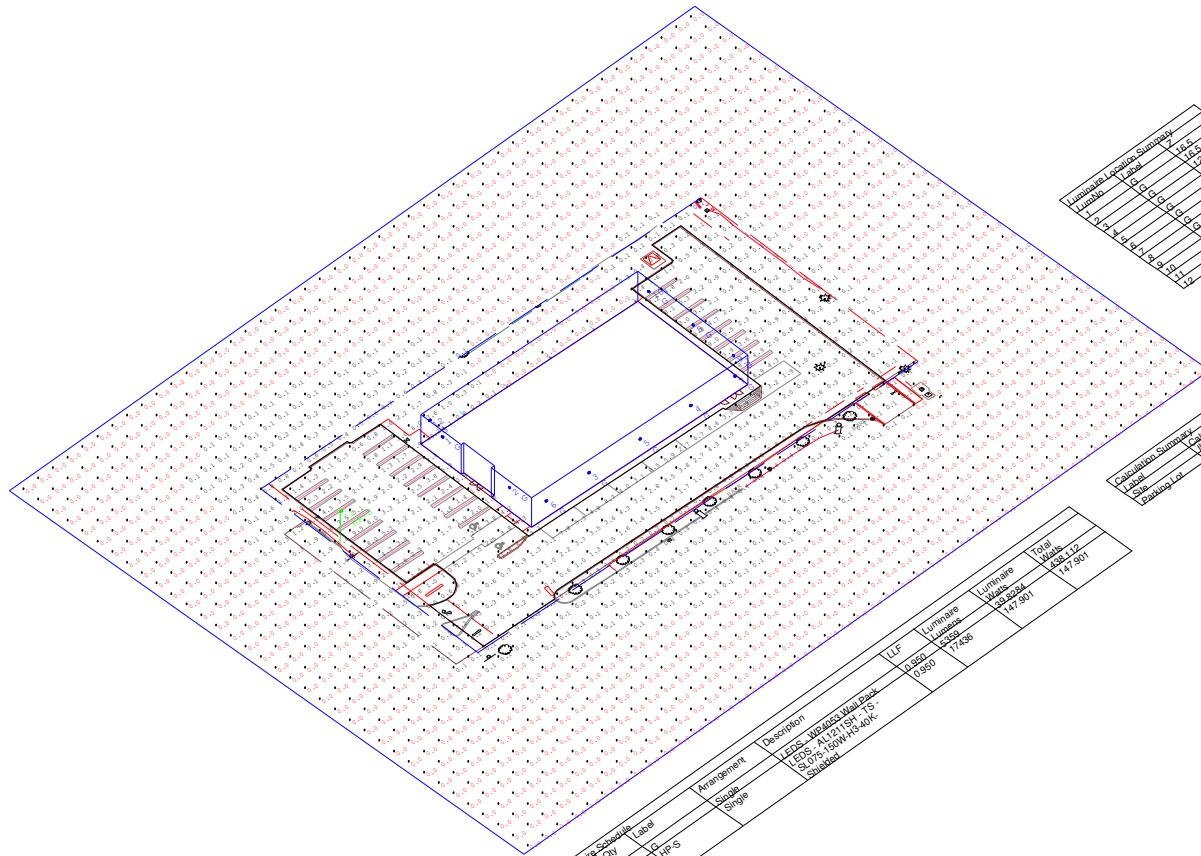
Luminaire Schedule									
Symbol	Qty	Label	Arrangement	Description	LLF	Luminaire Lumens	Luminaire Watts	Total Watts	
	11	G	Single	LEDs - WP4053 Wall Pack	0.950	5359	39.8284	438.112	
	1	HP-S	Single	LEDs - AL1211SH - TS - SL075-150W-H3-40K-Shielded	0.950	17436	147.901	147.901	

Calculation Summary						
Label	CalcType	Units	Avg	Max	Min	Avg/Min
Site	Illuminance	Fc	0.43	10.2	0.0	N.A.
Parking Lot	Illuminance	Fc	2.32	9.5	0.1	23.20

Project name: Dollar General
 Florence OR 25719 Lighting Layout
 Prepared for: Capital Growth Buchalter
 Prepared by: Brent M. Finley, LC

NLES - INC.
 N8874 Fire Lane 1
 Menasha, WI 54952
 PH 920-840-6054 / FAX 920-840-6424
 www.nlesinc.com





Luminaire Location	Summery	Foot Min
1	A.5	15.0
2	B.5	15.0
3	C.5	15.0
4	D.5	15.0
5	E.5	15.0
6	F.5	15.0
7	G.5	15.0
8	H.5	15.0
9	I.5	15.0
10	J.5	15.0
11	K.5	15.0
12	L.5	15.0
13	M.5	15.0
14	N.5	15.0
15	O.5	15.0
16	P.5	15.0
17	Q.5	15.0
18	R.5	15.0
19	S.5	15.0
20	T.5	15.0

Calculation Summary	Calc Type	Foot Min	Foot Max
Target	Footcandle	10.0	15.0
Site	Illuminance	10.0	15.0
Working Lev		10.0	15.0
LLF		0.8	
Util		2.0	
Watt		15.0	
Watt		15.0	
Watt		15.0	
Watt		15.0	

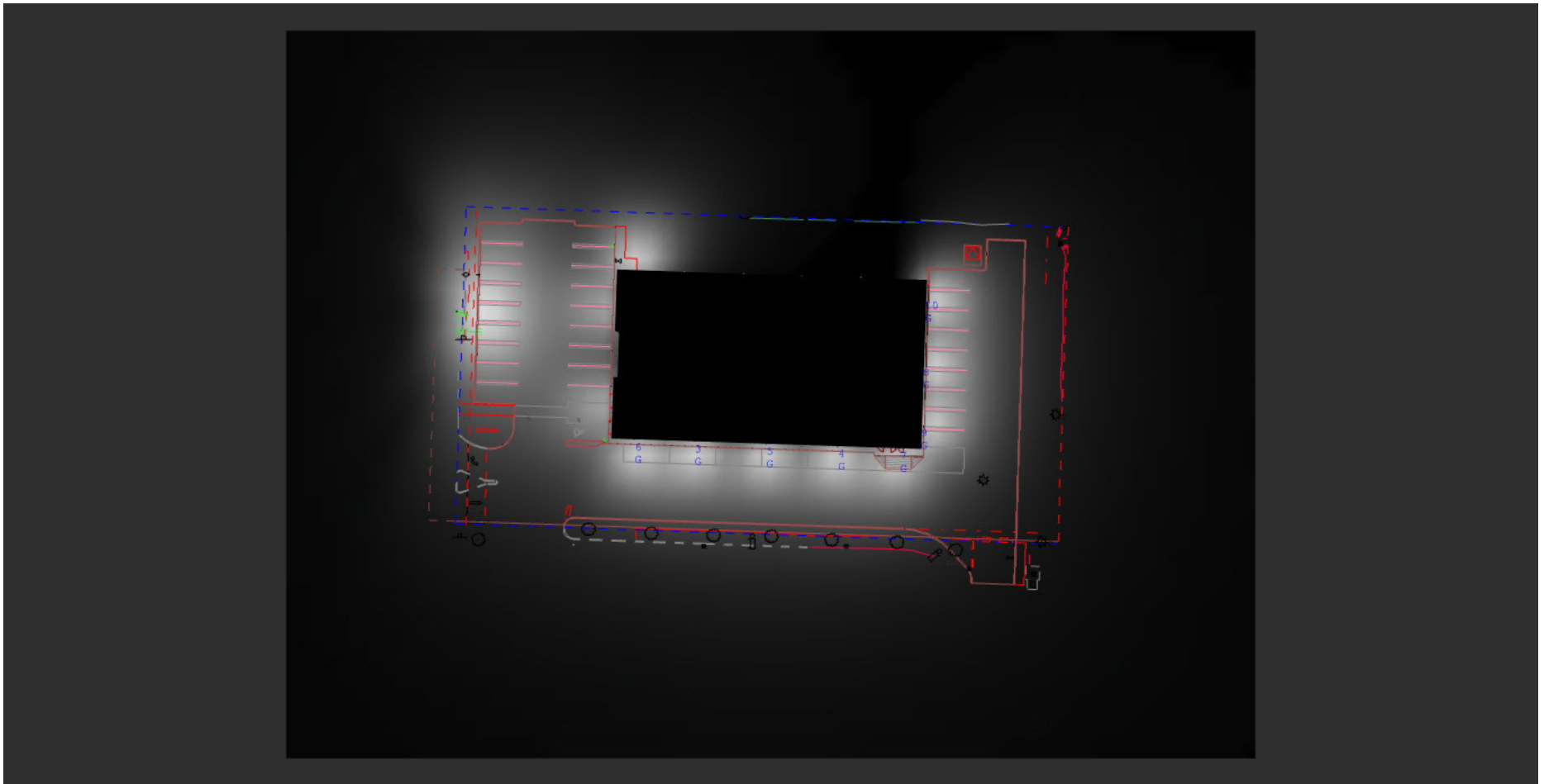
Luminaire Schedule Label	Arrangement	Description	LLF	Luminaire Lumens	Luminaire Equivalent Footcandle	Total Watt
1	Single	LED - 100Watts Max Beam SOS - A1121 SH FS SOS - A1150HFS40K 100Watt	0.8	7428	141.90	147.90

Project name: Dollar General
 Florence OR 25719 Lighting Layout
 Prepared for: Capital Growth Buchalter
 Prepared by: Brent M. Finley, LC

NLES - INC.

N8874 Fire Lane 1
 Menasha, WI 54952
 PH 920-840-6054 / FAX 920-840-6424
 www.nlesinc.com



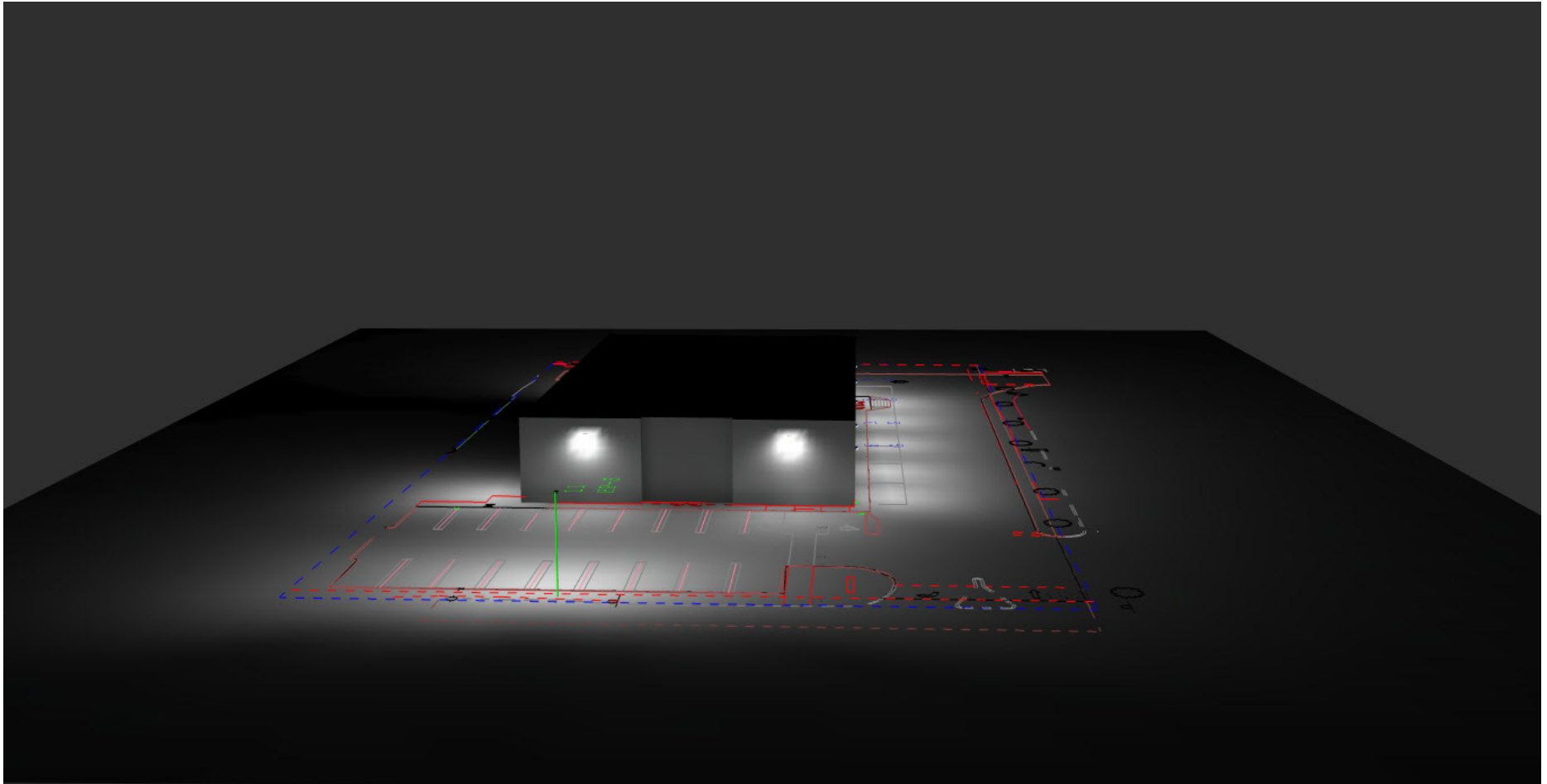


Project name: Dollar General
Florence OR 25719 Lighting Layout
Prepared for: Capital Growth Buchalter
Prepared by: Brent M. Finley, LC

NLES - INC.

N8874 Fire Lane 1
Menasha, WI 54952
PH 920-840-6054 / FAX 920-840-6424
www.nlesinc.com



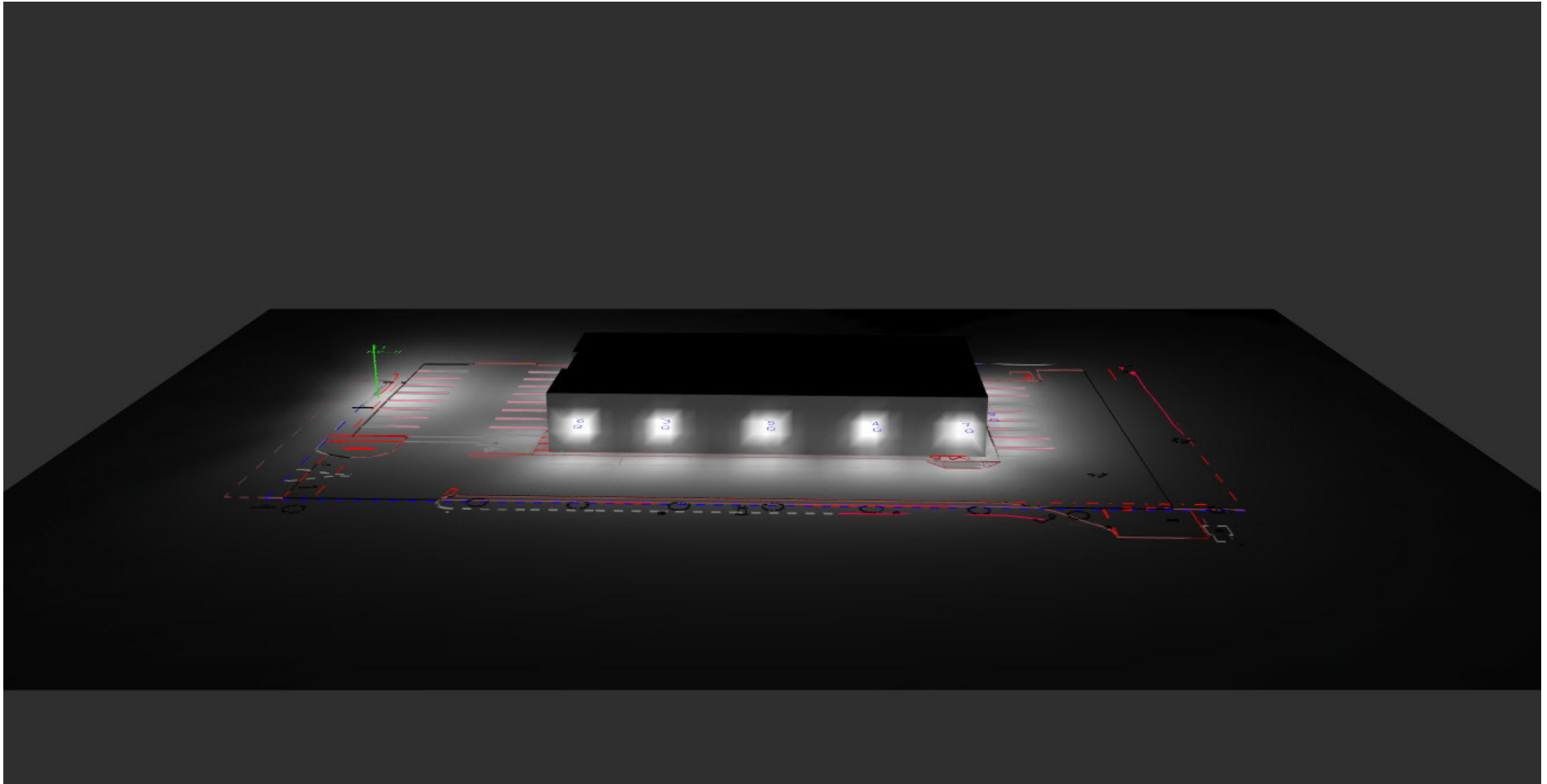


Project name: Dollar General
Florence OR 25719 Lighting Layout
Prepared for: Capital Growth Buchalter
Prepared by: Brent M. Finley, LC

NLES - INC.

N8874 Fire Lane 1
Menasha, WI 54952
PH 920-840-6054 / FAX 920-840-6424
www.nlesinc.com



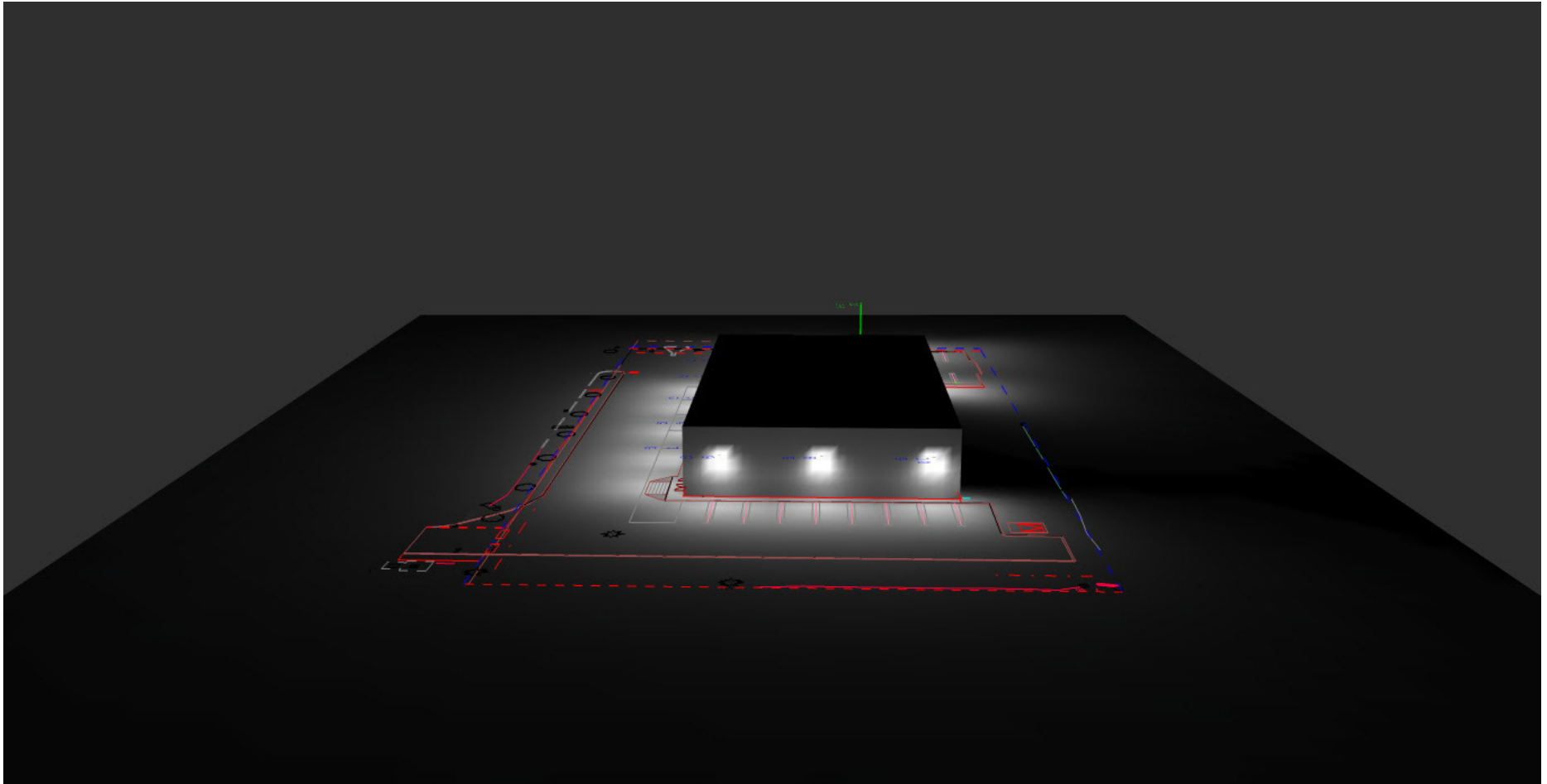


Project name: Dollar General
Florence OR 25719 Lighting Layout
Prepared for: Capital Growth Buchalter
Prepared by: Brent M. Finley, LC

NLES - INC.

N8874 Fire Lane 1
Menasha, WI 54952
PH 920-840-6054 / FAX 920-840-6424
www.nlesinc.com



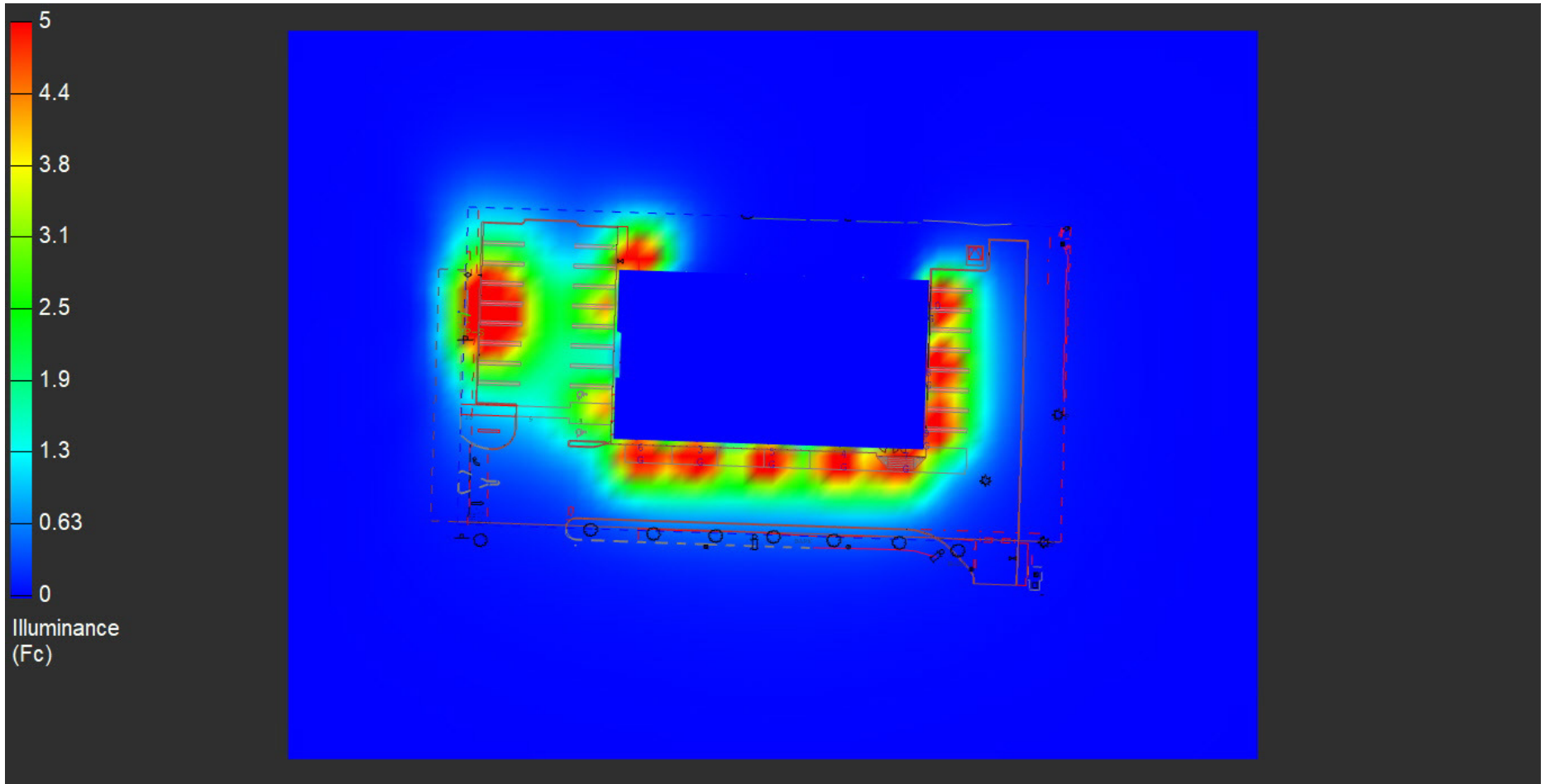


Project name: Dollar General
Florence OR 25719 Lighting Layout
Prepared for: Capital Growth Buchalter
Prepared by: Brent M. Finley, LC

NLES - INC.

N8874 Fire Lane 1
Menasha, WI 54952
PH 920-840-6054 / FAX 920-840-6424
www.nlesinc.com



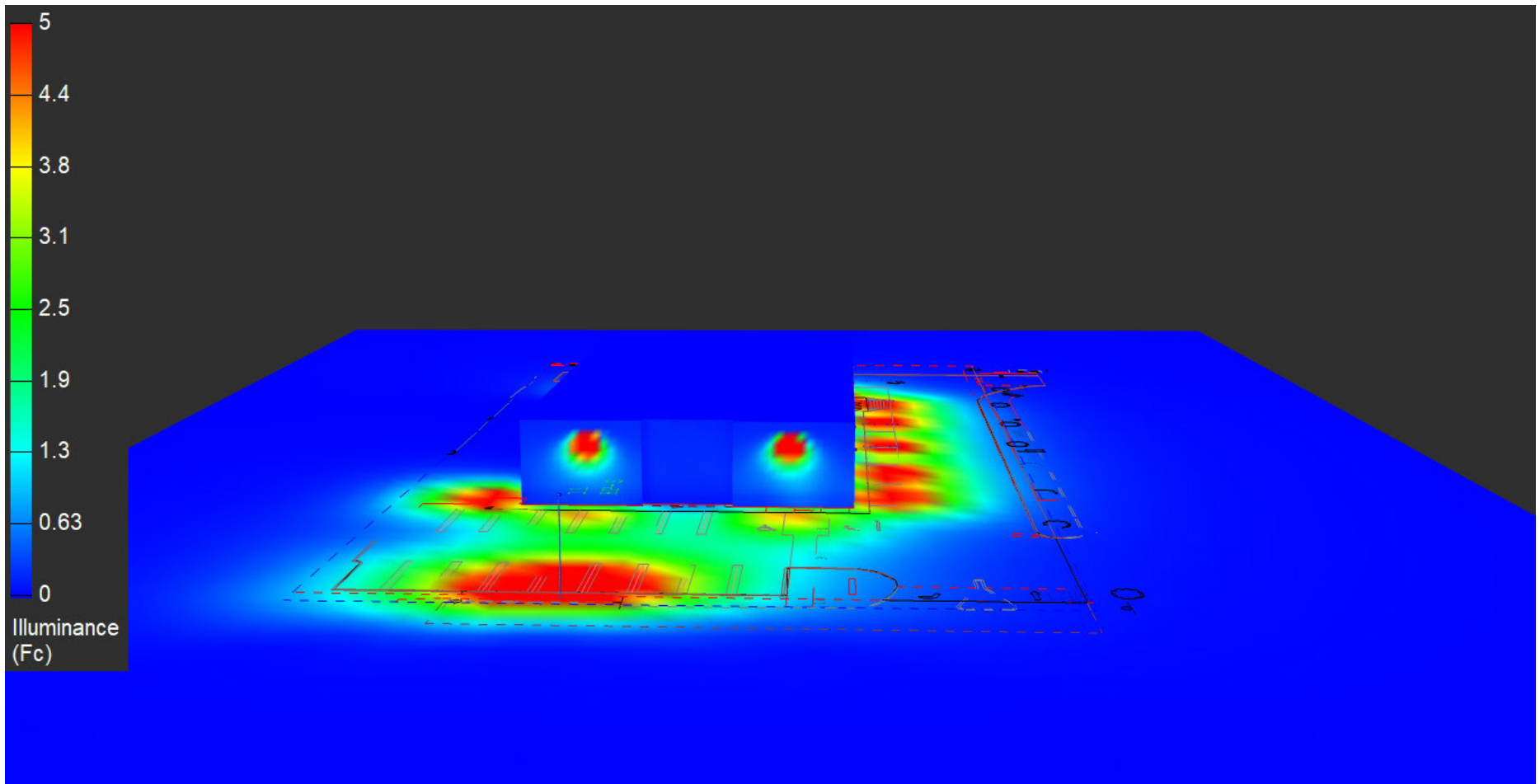


Project name: Dollar General
 Florence OR 25719 Lighting Layout
 Prepared for: Capital Growth Buchalter
 Prepared by: Brent M. Finley, LC

NLES - INC.

N8874 Fire Lane 1
 Menasha, WI 54952
 PH 920-840-6054 / FAX 920-840-6424
www.nlesinc.com





Project name: Dollar General
 Florence OR 25719 Lighting Layout
 Prepared for: Capital Growth Buchalter
 Prepared by: Brent M. Finley, LC

NLES - INC.

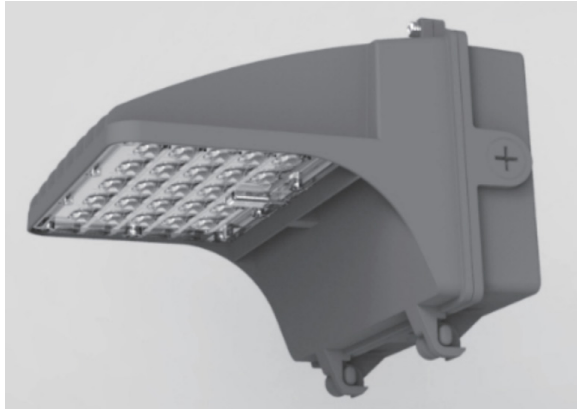
N8874 Fire Lane 1
 Menasha, WI 54952
 PH 920-840-6054 / FAX 920-840-6424
 www.nlesinc.com



TYPE G



LED Full Cut Wall Pack



WALL PACK

Wall pack light is one of the most dependable lights for security lighting luminaire. Applications include perimeter, security, stripmalls, entrance ways, and any general outdoor surface. The high performance optics are specifically designed to produce a Type III distribution.

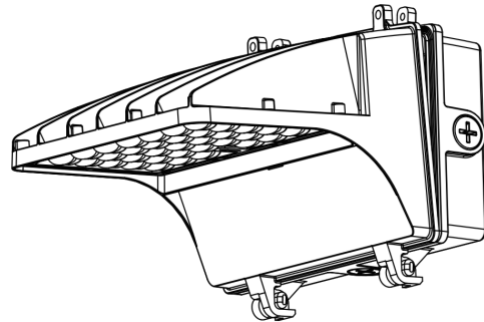
DESCRIPTION

- Energy Saving 40 Watt Integrated LED
- Lasts 45 years* or 50,000 Hours Continuous Use
- Maintenance Free — No Bulb Replacements
- 5 Year Limited Warranty



WP4053

Input Voltage	120-277V
Wattage	40W
Dimmability	Dimmable
Lumens	5200Lm
CCT ₃	5000K
Avg Rated Life ¹	50,000 hours
Power Factor	0.9
IP Rating	Wet Location
CRI ₄	>80Ra
Working Temp.	Min -4°F (-20° C), Max 104°F (40° C)
Product Dimensions	9.3 x 7.1 x 8.9 in
Product Weight	1.8lbs
Mastor Carton Weight	19.8lbs
Case Pack	4 pc



1 Hours lifetime with 70% lumen maintenance
2 Thermally stable typical lumens (±10%)
3 Thermally stable CCT (±10%)
4 Color rendering index/Ra



TYPE HB/HP/HP2 LED Area Light

AREA LIGHT SERIES

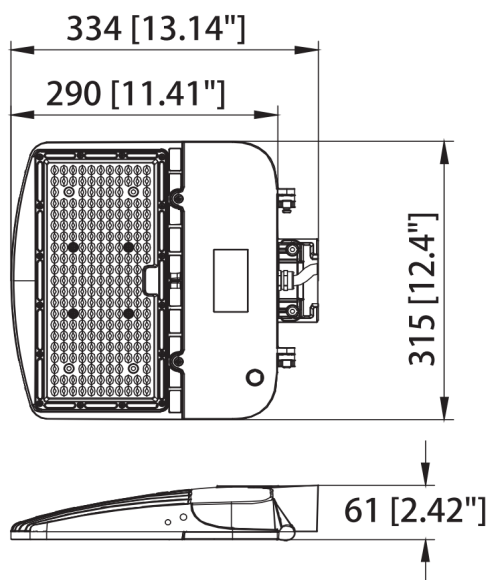
The LEDS Area Lights are perfect for new construction, retrofit and lighting upgrade solutions. High output and top of the line specifications. Available in multiple wattage and lumen output configurations to meet any lighting application. Type 4 & 5 available.



FEATURES

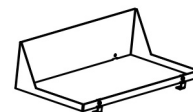
- Energy Saving 150 Watt Integrated LED
- Lasts 45 Years* or 50,000 Hours Continuous Use
- Maintenance Free - No Bulb Replacements
- 5-Year Limited Warranty

Model Number	Part Number	Watts	IP Rating	CCT	CRI	Input Voltage	Product Dimensions(in)
AL1211	AL-15050-MV	150W	IP65	5000k	>80Ra	120-277	11.68x12.40x2.69



ACCESSORIES

Accessories	Model Number	Part Number
Slip-fitter mount	AL7770	AL-SF-003
Round pole mount	AL7771	AL-RP-003
Glare Shield	AL1211SH	N/A



TYPE J



Steel Poles

POLE

The pole shaft is fabricated from hot rolled carbon steel having a minimum yield of 55,000 PSI and conforms to ASTM A500 grade C requirements. The shaft construction is a single piece of formed steel welded longitudinally. The hand hold is located 1' above the pole base. A ground lug is provided standard.

BASE COVER

A full base cover is provided which encapsulates the base plate and anchor bolts to provide a clean transition from pier to pole.

ANCHOR BASE

The anchor base is fabricated from a structural quality hot rolled carbon steel plate that has a minimum yield strength of 36,000 PSI. The anchor base telescopes the pole shaft and has a circumferential weld on the top and bottom.

FINISH

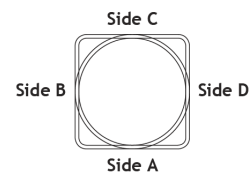
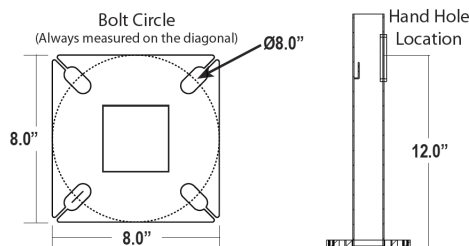
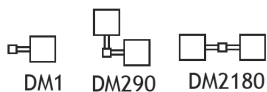
A Super Durable Polyester powder coat finish is electrostatically applied in our state of the art paint facility. Standard colors available: Black, Bronze, US Green, White. Custom colors available upon request. Galvanizing and T-Guard treatments available upon request. Additional warranty extensions available with these treatments.



Part Number	Description
LEDS-POLE-DM1	25' Pole, Drilled for Single Fixture, Bronze Finish
LEDS-POLE-DM290	25' Pole, Drilled for 2 Fixtures at 90°, Bronze Finish
LEDS-POLE-DM2180	25' Pole, Drilled for 2 Fixtures at 180°, Bronze Finish
LEDS-POLE-BOLTS	4 Anchor Bolt with Rigid Template

Technical Data		Max EPA (1.3 Gust)	
Nominal Pole Height	25' - 0"	90 mph	5.0
Shaft Dimension	25' x 4"	100 mph	3.0
Wall Gauge	11 Gauge	110 mph	1.5
Bolt Circle	8.0"	120 mph	0.4
Bolt Size	3/4" x 18" x 3"	130 mph	N / A
Base Plate Dimensions	8.0" sq. x .75" thk.	140 mph	N / A
Est. Shipping Weight	180 lbs		

Mounting Options



Drilling Locations

Sides	A	B	C	D
Hand Hole	X			
DM1	X			
DM290	X	X		
DM2180		X		X



LEDS LLC
N8774 Firelane 1
Menasha, WI 54952

P: 920-840-6054
F: 920-840-6424
www.leds-llc.com