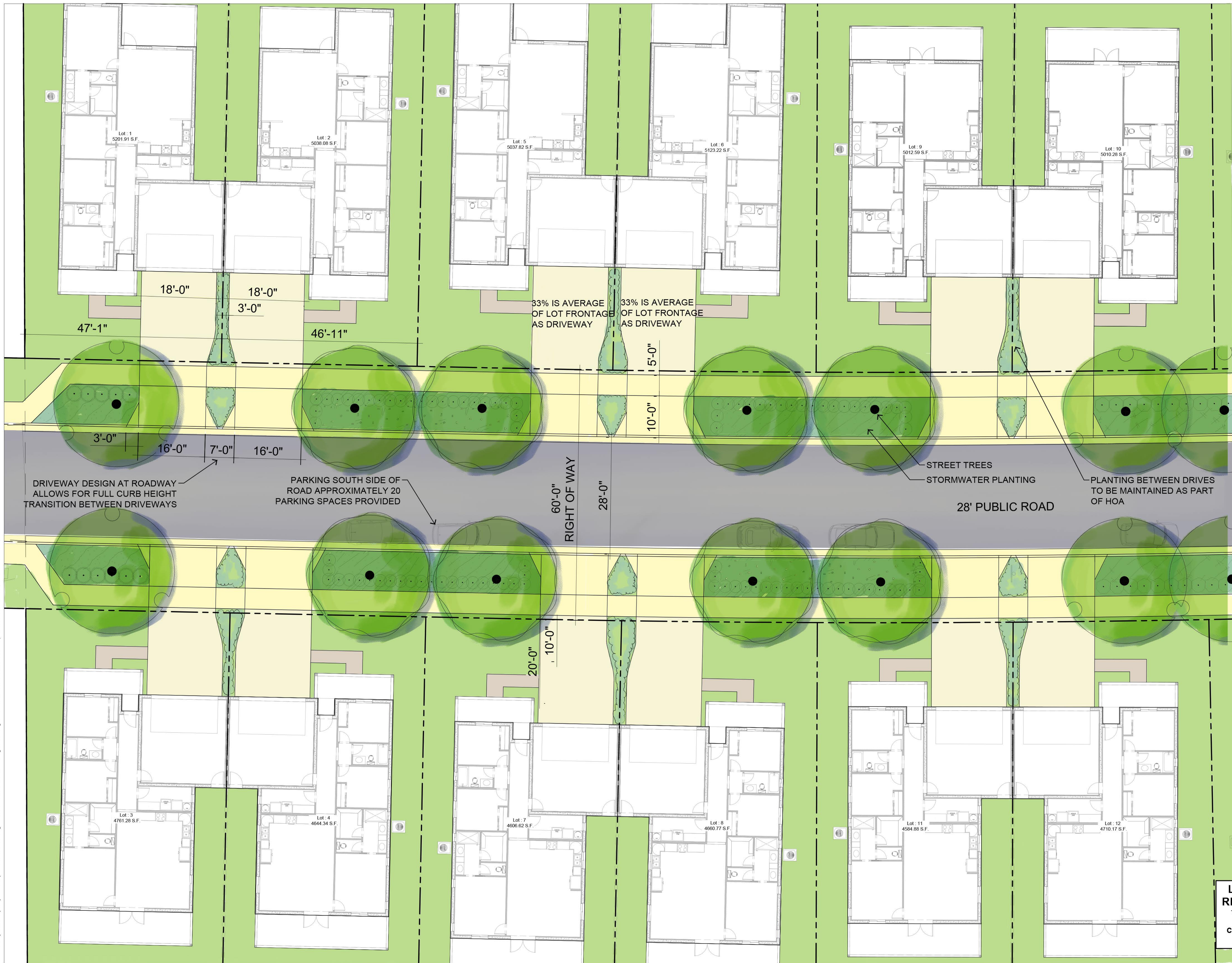


M:\Project Activity\Project Activity - 2023\Pine Crossing - Florence\Site Plan\Pine Crossing sheets.dwg, 8/21/2023 5:00:35 PM, DWG To PDF.pc3, ARCH full bleed D (36.00 x 24.00 inches)



**LAND USE REVIEW SET**  
 THIS DRAWING IS NOT FOR CONSTRUCTION  
 8-2-23



**THE SATRE GROUP**  
 375 West 4th, Suite 201, Eugene OR 97401  
 Phone: 541.686.4540 Fax: 541.686.4577  
 www.satregrp.com

THE SATRE GROUP, LAND USE PLANNERS, LANDSCAPE ARCHITECTS AND ENVIRONMENTAL ENGINEERS, IS A PROFESSIONAL CORPORATION. THE SERVICES PROVIDED BY THE COMPANY ARE NOT TO BE ASSIGNED TO A THIRD PARTY. ANY FORM OR MANNER WHATSOEVER, NOR ARE THEY TO BE REPRODUCED, CHANGED, OR COPIED IN ANY MANNER WITHOUT THE WRITTEN PERMISSION OF THE SATRE GROUP. THE EVENT OF UNAUTHORIZED REUSE OF THESE PLANS BY A THIRD PARTY, THE THIRD PARTY SHALL HOLD THE SATRE GROUP HARMLESS.

REGISTERED  
 873  
**JOHN C SCHMIDT**  
 OREGON  
 10/18/2015  
 LANDSCAPE ARCHITECT

**SITE PLAN INSET FOR DRIVEWAY MODIFICATION**

**PINE CROSSING**  
 SPRUCE STREET  
 FLORENCE, OREGON

SCALE 1" = 10' - 0"

Revisions

#	Date	Description

Project Number	2226
Drawn By	JCS
Checked	JCS
Date	08-21-23
Phase	TENTATIVE SUBDIVISION

