

EXHIBIT D

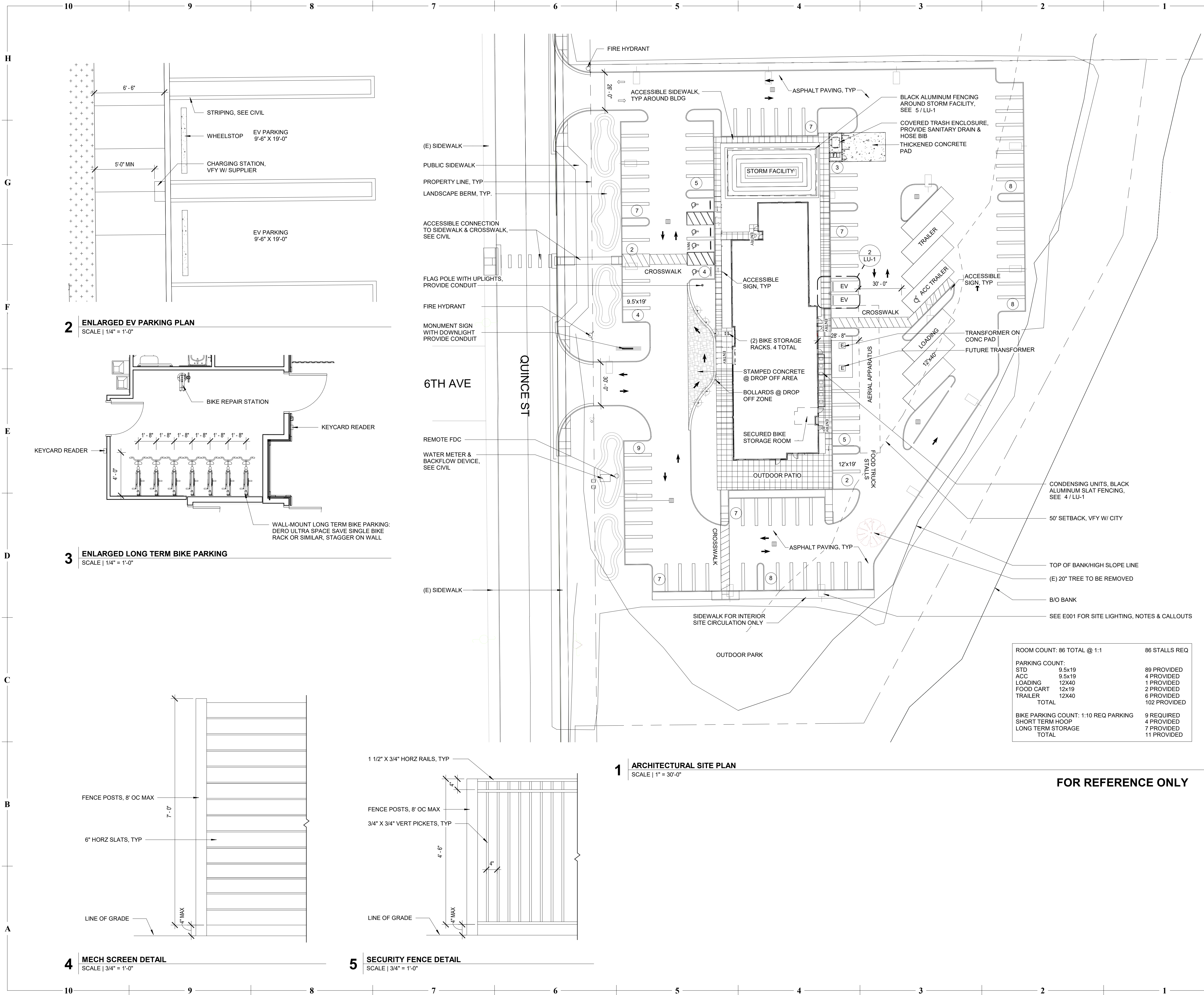


#56467
LAND USE SUBMITTAL

MICROTEL INN AND SUITES
750 QUINCE ST
FLORENCE, OR 97439

REVISION DATES:

PROFESSIONAL SEAL
LU-1
ISSUE DATE: 06/01/2022
PROJECT NUMBER: 21-098



2 ENLARGED EV PARKING PLAN
SCALE | 1/4" = 1'-0"

3 ENLARGED LONG TERM BIKE PARKING
SCALE | 1/4" = 1'-0"

1 ARCHITECTURAL SITE PLAN
SCALE | 1" = 30'-0"

4 MECH SCREEN DETAIL
SCALE | 3/4" = 1'-0"

5 SECURITY FENCE DETAIL
SCALE | 3/4" = 1'-0"

FOR REFERENCE ONLY



WOODBLOCK ARCHITECTURE, INC.
827 SW SECOND AVENUE, SUITE 300
PORTLAND, OR | 97204 | P 503.889.0004



#56467
LAND USE SUBMITTAL

MICROTEL INN AND SUITES

750 QUINCE ST
FLORENCE, OR 97439

REVISION DATES:

PROFESSIONAL SEAL

LU-2

ISSUE DATE: 06/01/2022
PROJECT NUMBER: 21-098

FIRST FLOOR & SECOND FLOOR PLAN

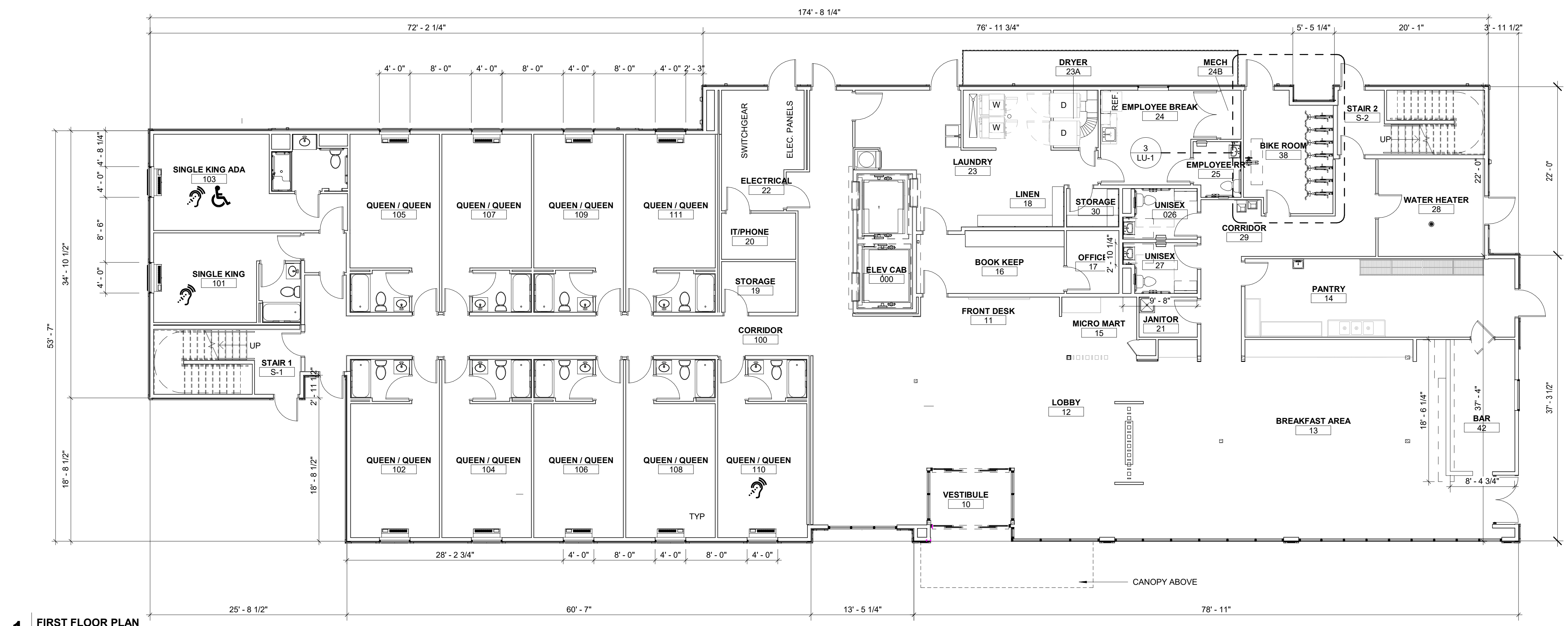
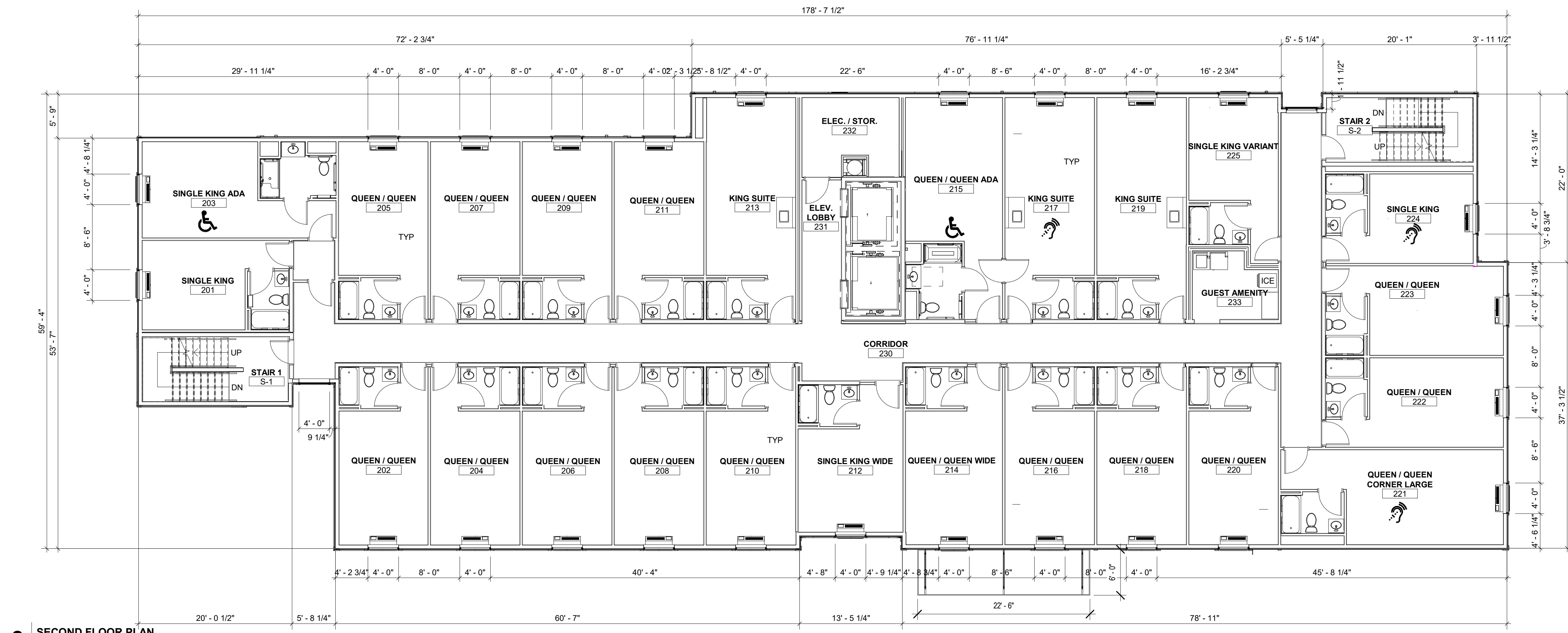


EXHIBIT D



#56467
LAND USE SUBMITTAL

MICROTEL INN AND SUITES

750 QUINCE ST
FLORENCE, OR 97439

REVISION DATES:

PROFESSIONAL SEAL
LU-3
ISSUE DATE: 06/01/2022
PROJECT NUMBER: 21-098

THIRD FLOOR & FOURTH FLOOR PLANS



2 FOURTH FLOOR PLAN
SCALE | 1/8" = 1'-0"



1 THIRD FLOOR PLAN
SCALE | 1/8" = 1'-0"

EXHIBIT D

GENERAL NOTES - ROOF PLANS:

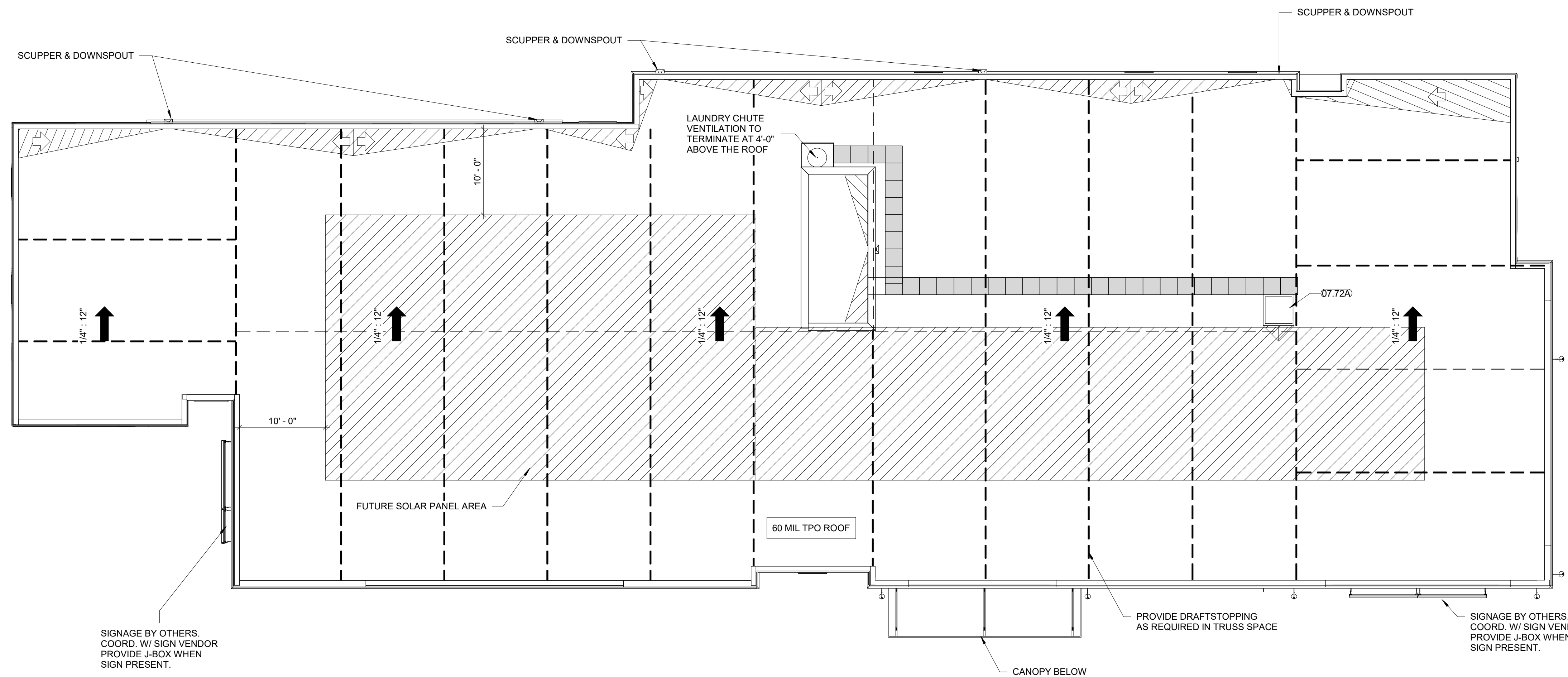
- RE: SHEET CS2 FOR ADDITIONAL GENERAL NOTES THAT ARE APPLICABLE.
- DIMENSIONS SHOWN ON THE ROOF PLAN ARE TO THE FACE OF STUD AND COLUMN GRID LINES, UNLESS NOTED OR SHOWN OTHERWISE. DIMENSIONS ARE TO FACE OF STUD UNLESS NOTED OTHERWISE.
- PROVIDE 1/2" FT. TAPERED INSULATION AT ALL ROOF CURBS AND AT EQUIPMENT WHICH EXCEEDS 18 INCHES IN WIDTH. NOTE: WALL THICKNESSES ARE ACTUAL.

ROOF PLAN LEGEND

- SLOPED STRUCTURE
- TAPERED INSULATION CRICKETING @ 1/4" PER FOOT
- ROOF WALKING PAD
- SCUPPER & DOWNSPOUT

MATERIAL KEYNOTES

07.72A ROOF HATCH



1 OVERALL ROOF PLAN
1/8" = 1'-0"



#56467
LAND USE SUBMITTAL

MICROTEL INN AND SUITES
750 QUINCE ST
FLORENCE, OR 97439

REVISION DATES:

PROFESSIONAL SEAL
LU-4
ISSUE DATE: 06/01/2022
PROJECT NUMBER: 21-098

ROOF PLAN

EXHIBIT D



#56467
LAND USE SUBMITTAL

MICROTEL INN AND SUITES

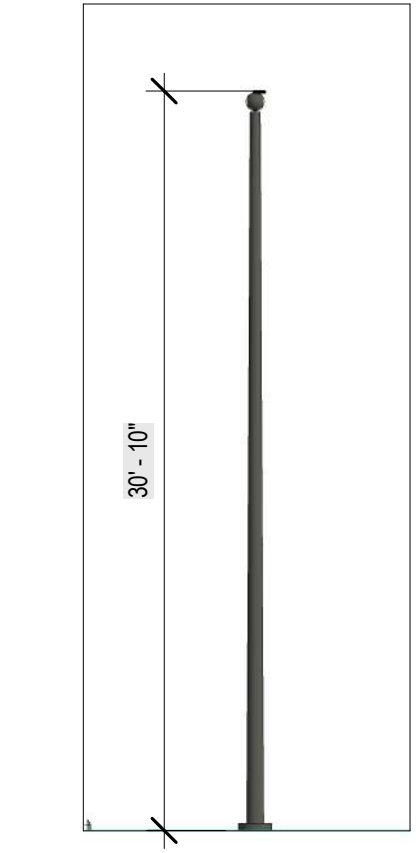
750 QUINCE ST
FLORENCE, OR 97439

REVISION DATES:

PROFESSIONAL SEAL
LU-5
ISSUE DATE: 06/01/2022
PROJECT NUMBER: 21-098

D EXTERIOR ELEVATION COLORS

-  F-1: WOOD LOOK SIDING - COLOR TO MATCH #131 - GULL GRAY DRYVIT #MICR-01-1022-ST
-  F-2: WOOD LOOK SIDING - COLOR TO MATCH #577A - BLUEBELL DRYVIT #MICR-02-1022-ST
-  F-3: WOOD LOOK SIDING - COLOR TO MATCH #528 CITATION DRYVIT #MICR-03-1022-ST
-  F-4: WOOD LOOK SIDING - COLOR TO MATCH #636 STEEL BLUE DRYVIT #MICR-04-1022-ST
-  F-5: SIDING - COLOR TO MATCH YELLOW - MATCH PMS 109 DRYVIT #MICR-05-1022-ST USE DRYVIT STRATOTONE HIGH PERFORMANCE COLORANT
-  F-8: IVORY SIDING - COLOR TO MATCH DRYVIT #MICR-05-1022-ST USE DRYVIT STRATOTONE HIGH PERFORMANCE COLORANT



EXTERIOR ELEVATIONS



VIEW FROM SW CORNER

EXHIBIT D



WOODBLOCK ARCHITECTURE, INC.
827 SW SECOND AVENUE, SUITE 300
PORTLAND, OR | 97204 | P 503.889.0004



#56467
LAND USE SUBMITTAL

MICROTEL INN AND SUITES
750 QUINCE ST
FLORENCE, OR 97439

REVISION DATES:

PROFESSIONAL SEAL
LU-6
ISSUE DATE: 06/01/2022
PROJECT NUMBER: 21-098

PERSPECTIVE



VIEW FROM NW CORNER

EXHIBIT D

W
 WOODBLOCK ARCHITECTURE, INC.
 827 SW SECOND AVENUE, SUITE 300
 PORTLAND, OR | 97204 | P 503.889.0004

MICROTEL
 INN & SUITES
 BY WYNDHAM

#56467
 LAND USE SUBMITTAL

MICROTEL INN AND SUITES

750 QUINCE ST
 FLORENCE, OR 97439

REVISION DATES:

PROFESSIONAL SEAL
LU-7
 ISSUE DATE: 06/01/2022
 PROJECT NUMBER: 21-098

PERSPECTIVE



VIEW FROM SE CORNER

EXHIBIT D



WOODBLOCK ARCHITECTURE, INC.
827 SW SECOND AVENUE, SUITE 300
PORTLAND, OR | 97204 | P 503.889.0004



#56467
LAND USE SUBMITTAL

MICROTEL INN AND SUITES

750 QUINCE ST
FLORENCE, OR 97439

REVISION DATES:

PROFESSIONAL SEAL

LU-8

ISSUE DATE: 06/01/2022
PROJECT NUMBER: 21-098

PERSPECTIVE



VIEW FROM NW CORNER

EXHIBIT D



#56467
LAND USE SUBMITTAL

MICROTEL INN AND SUITES

750 QUINCE ST
FLORENCE, OR 97439

REVISION DATES:

PROFESSIONAL SEAL
LU-9
ISSUE DATE: 06/01/2022
PROJECT NUMBER: 21-098

PERSPECTIVE

EXHIBIT D



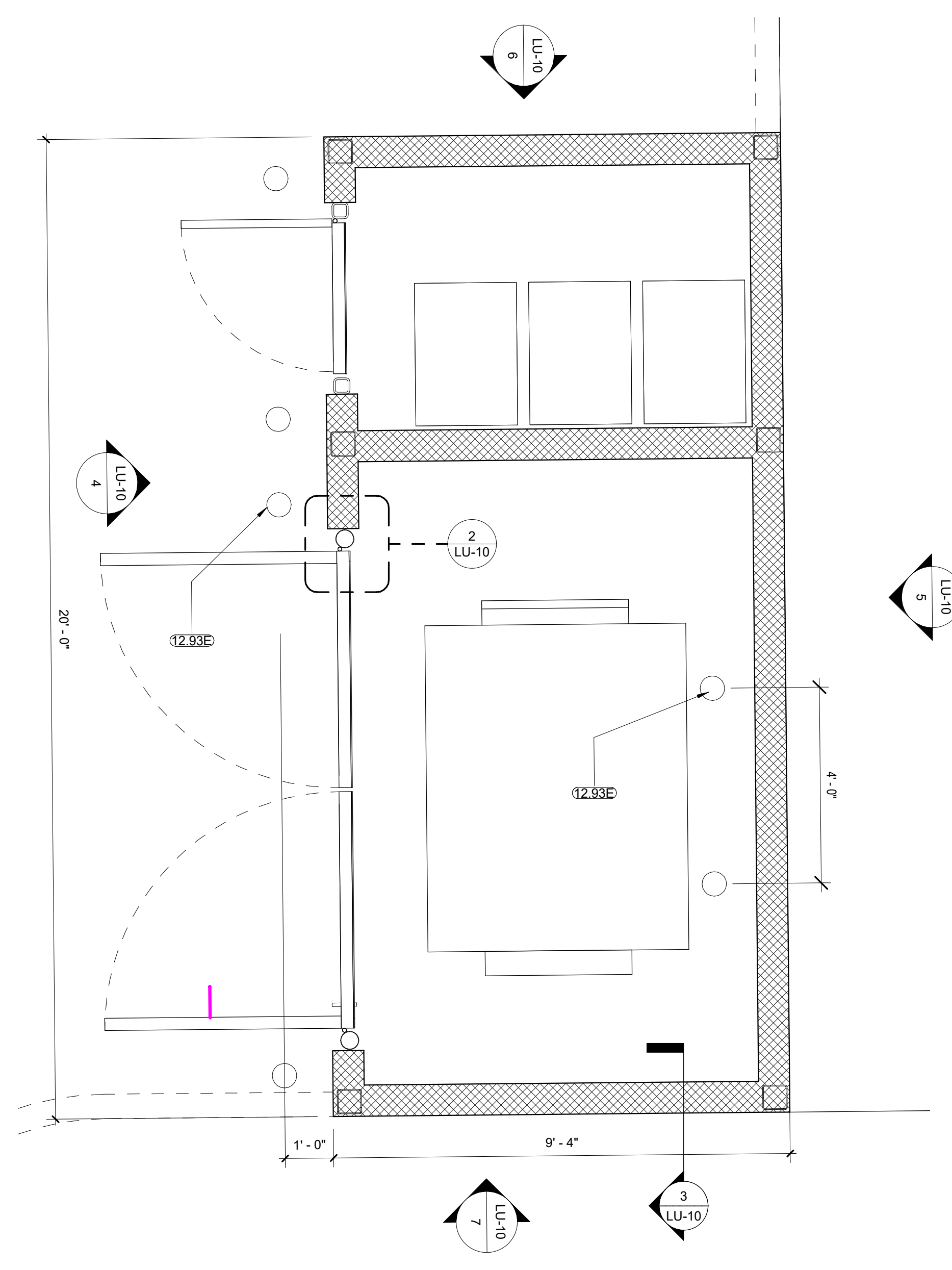
#56467
LAND USE SUBMITTAL

MICROTEL INN AND SUITES
750 QUINCE ST
FLORENCE, OR 97439

REVISION DATES:

PROFESSIONAL SEAL
LU-10
ISSUE DATE: 06/01/2022
PROJECT NUMBER: 21-098

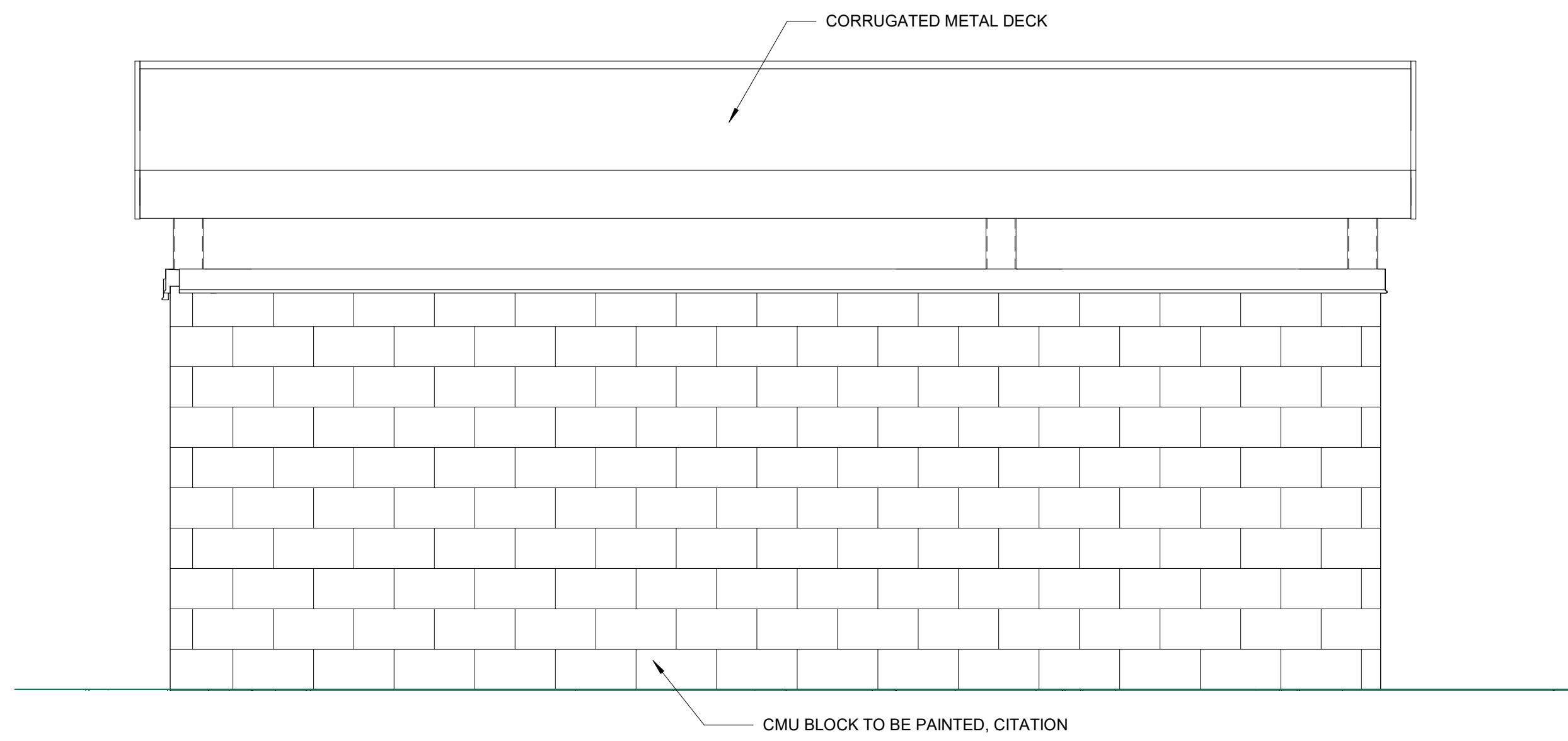
TRASH ENCLOSURE



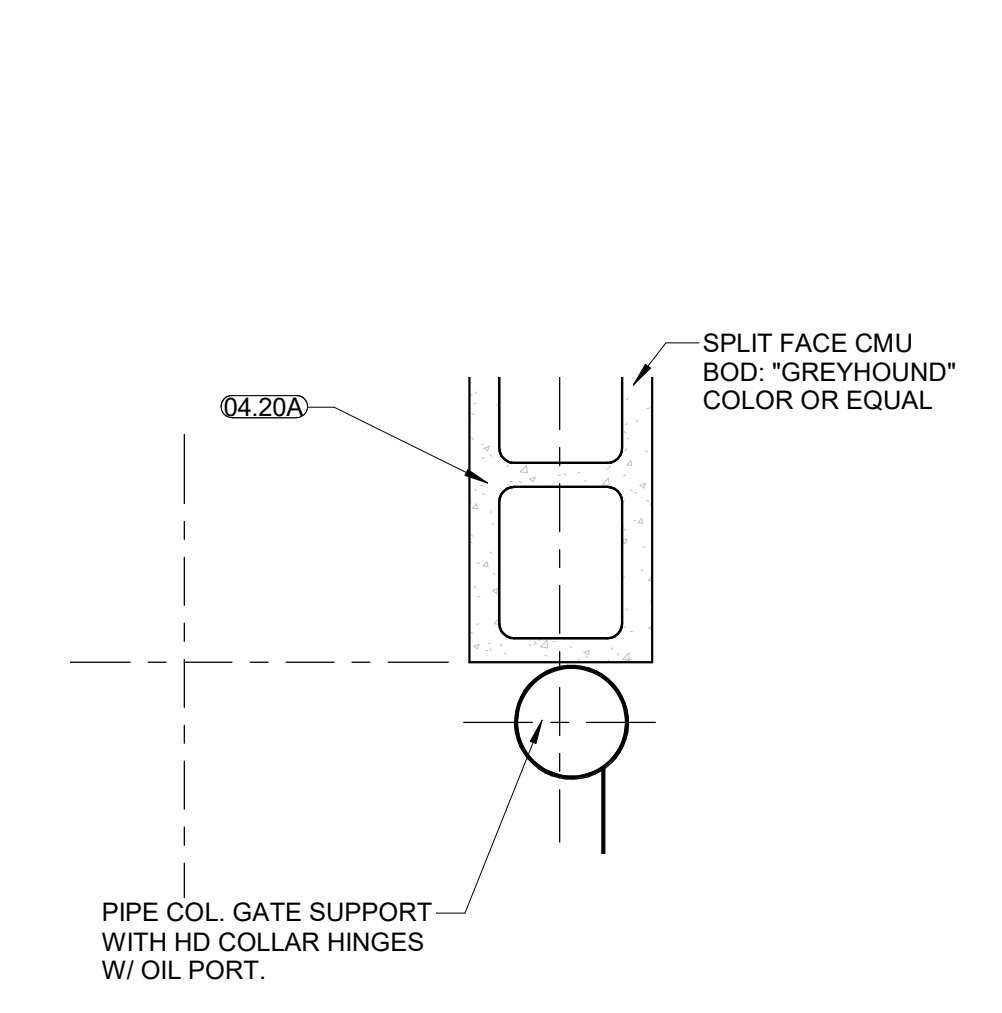
1 TRASH ENCLOSURE PLAN
SCALE | 1/2" = 1'-0"



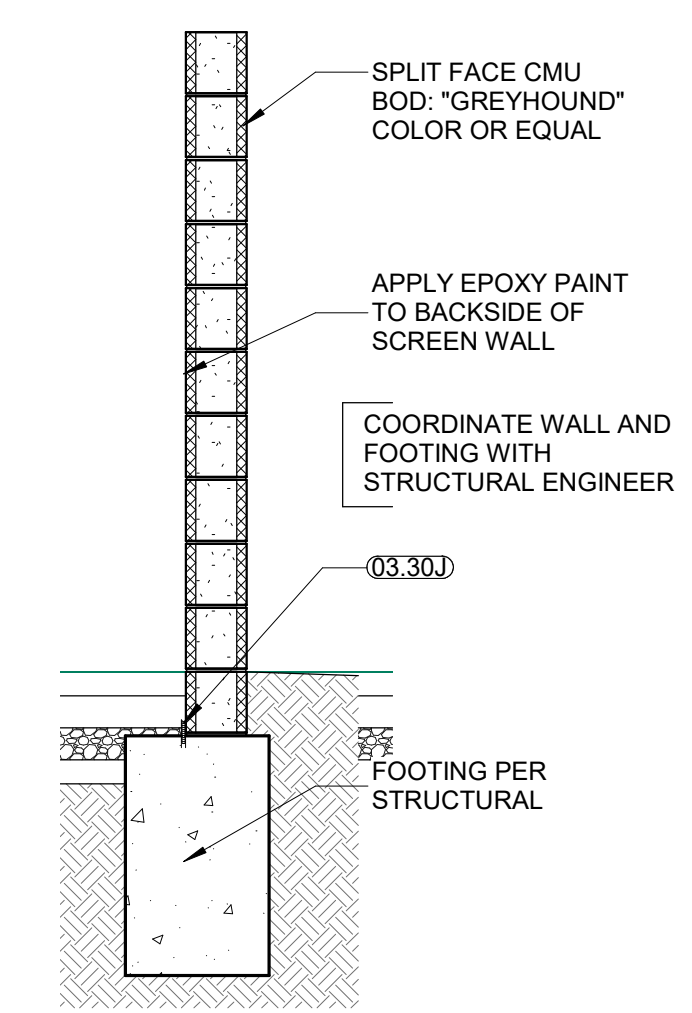
4 TRASH EAST ELEVATION
SCALE | 1/2" = 1'-0"



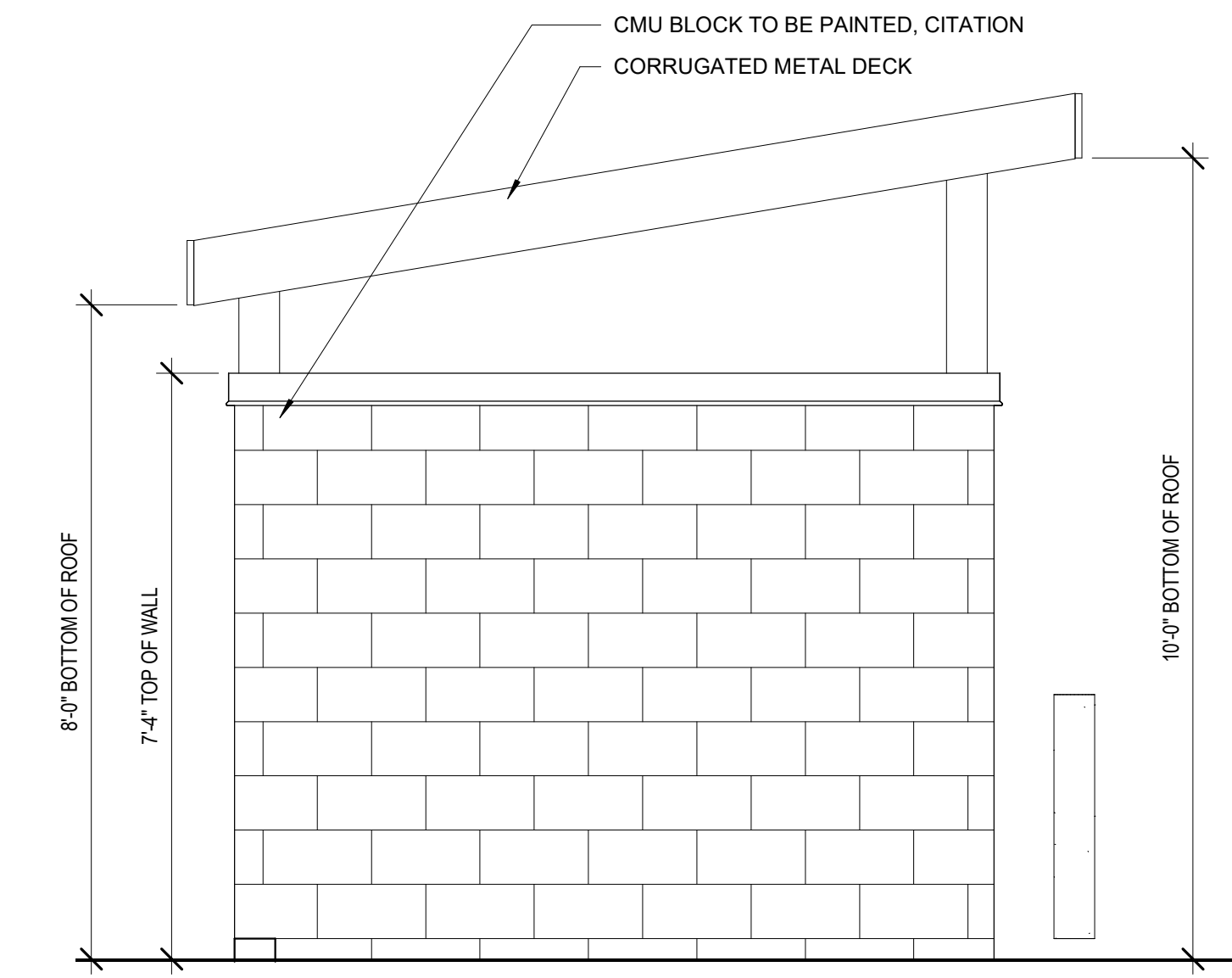
5 TRASH WEST ELEVATION
SCALE | 1/2" = 1'-0"



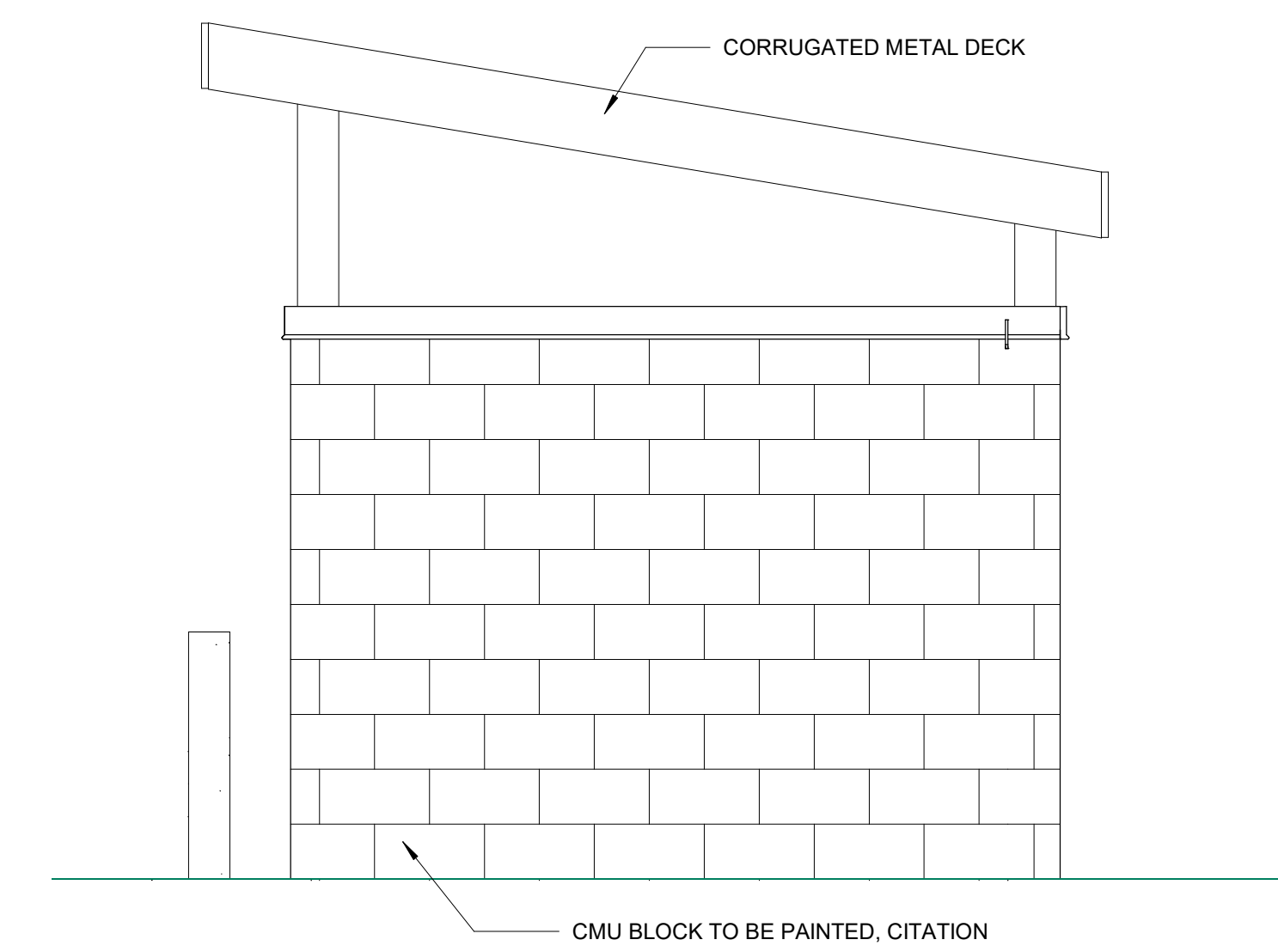
2 TRASH ENCLOSURE PLAN DETAIL
SCALE | 1 1/2" = 1'-0"



3 TRASH ENCLOSURE WALL SECTION
SCALE | 1/2" = 1'-0"



6 TRASH SOUTH ELEVATION
SCALE | 1/2" = 1'-0"



7 TRASH NORTH ELEVATION
SCALE | 1/2" = 1'-0"