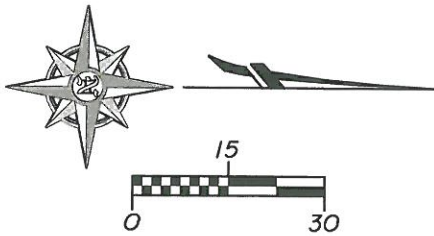


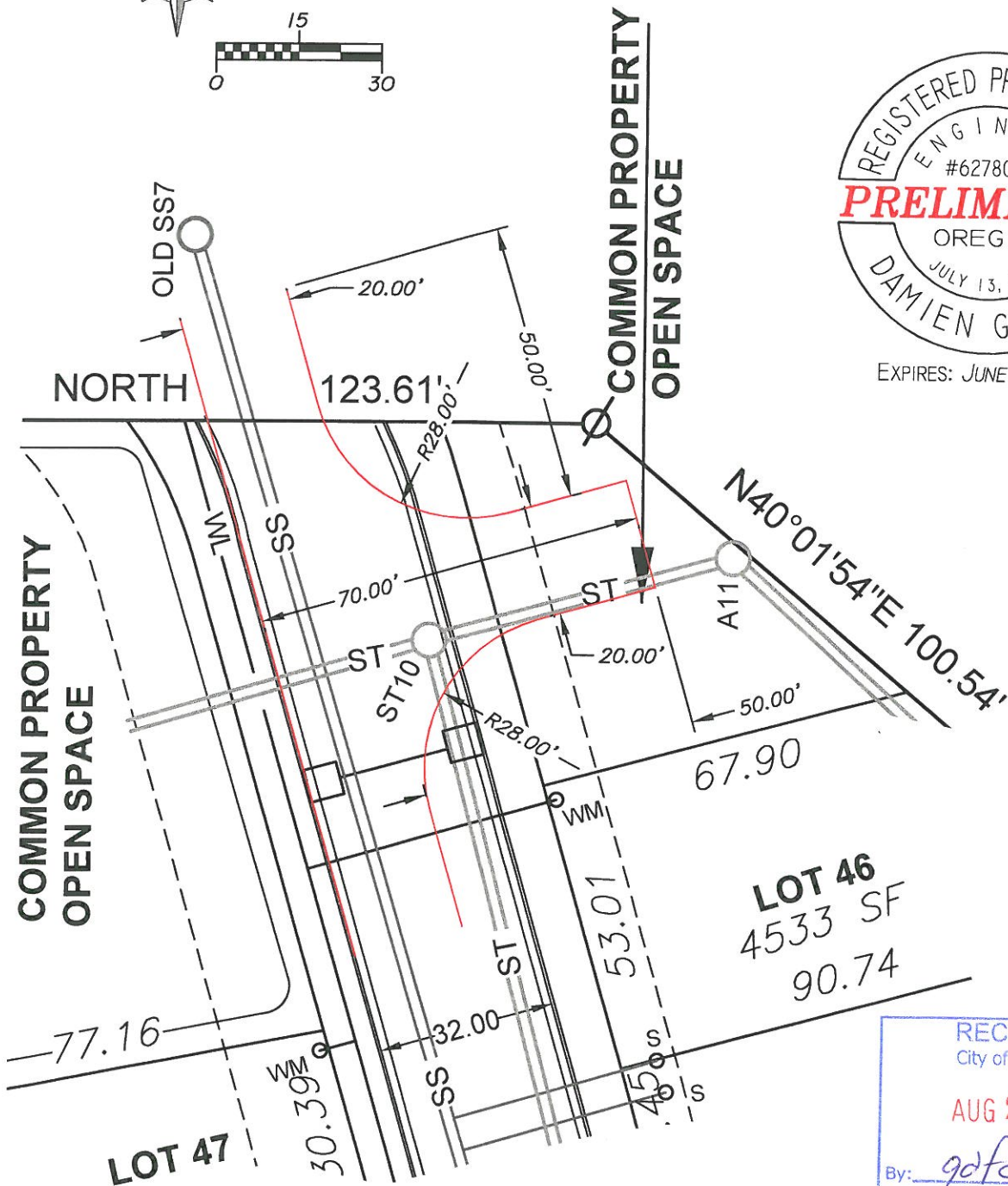
EXHIBIT MAP
TURNAROUND DETAIL
MAY 1, 2015
SCALE: 1"=30'

Branch
ENGINEERING INC.
Since 1977

310 5th Street
Springfield, OR 97477
p: 541.746.0637
www.BranchEngineering.com



EXPIRES: JUNE 30, 2017



PROJECT No. 14-311

EXHIBIT G

APPENDIX D

FIRE APPARATUS ACCESS ROADS

The provisions contained in this appendix are adopted by the State of Oregon.

SECTION D101 GENERAL

D101.1 Scope. Fire apparatus access roads shall be in accordance with this appendix and all other applicable requirements of the *International Fire Code*. The *fire code official* may be guided by the Oregon Department of Land and Conservation and Development's Neighborhood Street Design Guidelines, June 2001.

SECTION D102 REQUIRED ACCESS

D102.1 Access and loading. Facilities, buildings or portions of buildings hereafter constructed shall be accessible to fire department apparatus by way of an *approved* fire apparatus access road with an asphalt, concrete or other *approved* driving surface capable of supporting the imposed load of fire apparatus weighing at least 60,000 pounds (27 240 kg).

Exception: The minimum weight specified in Section D102.1 may be increased by the *fire code official* based upon the actual weight of fire apparatus vehicles serving the jurisdiction that provides structural fire protection services to the location, including fire apparatus vehicles that respond under automatic and mutual aid agreements.

D102.1.1 Access in wildland-urban interface areas. For egress and access concerns in wildland-urban interface locations, the *fire code official* may be guided by the *International Wildland-Urban Interface Code*.

SECTION D103 MINIMUM SPECIFICATIONS

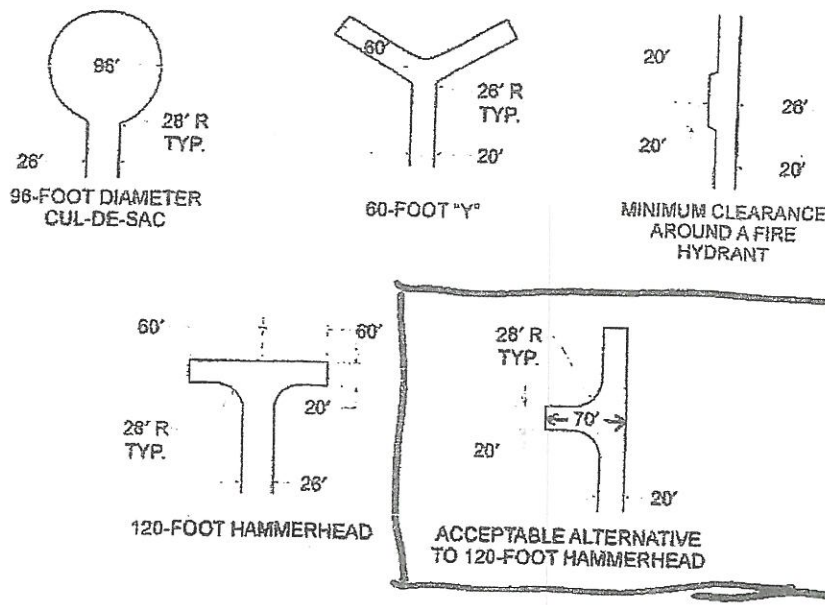
D103.1 Access road width with a hydrant. Where a fire hydrant is located on a fire apparatus access road, the minimum road width shall be 26 feet (7925 mm), exclusive of shoulders (see Figure D103.1).

Exception: The *fire code official* is authorized to modify the provisions of Section D103.1 when:

1. In accordance with Oregon Administrative Rule (OAR) 918-480-0100, all buildings are completely protected with an approved automatic fire sprinkler system;
2. Provisions are made for the emergency use of sidewalks by such means as rolled or mountable curbs capable of supporting the fire department's apparatus;
3. Streets or roadways are identified for one-way circulating flow of traffic or pullouts are provided every 150 feet (45 720 mm) on streets or roadways identified for two-way traffic; or
4. A grid system for traffic flow is provided and streets or roadways in the grid do not exceed 300 feet (91 400 mm) in length but are accessible at each end from approved access roadways or streets.

D103.2 Grade. Fire apparatus access roads shall not exceed 10 percent in grade.

Exception: Grades steeper than 10 percent as *approved* by the fire chief.



For SI: 1 foot = 304.8 mm.

FIGURE D103.1
DEAD-END FIRE APPARATUS ACCESS ROAD TURNAROUND

