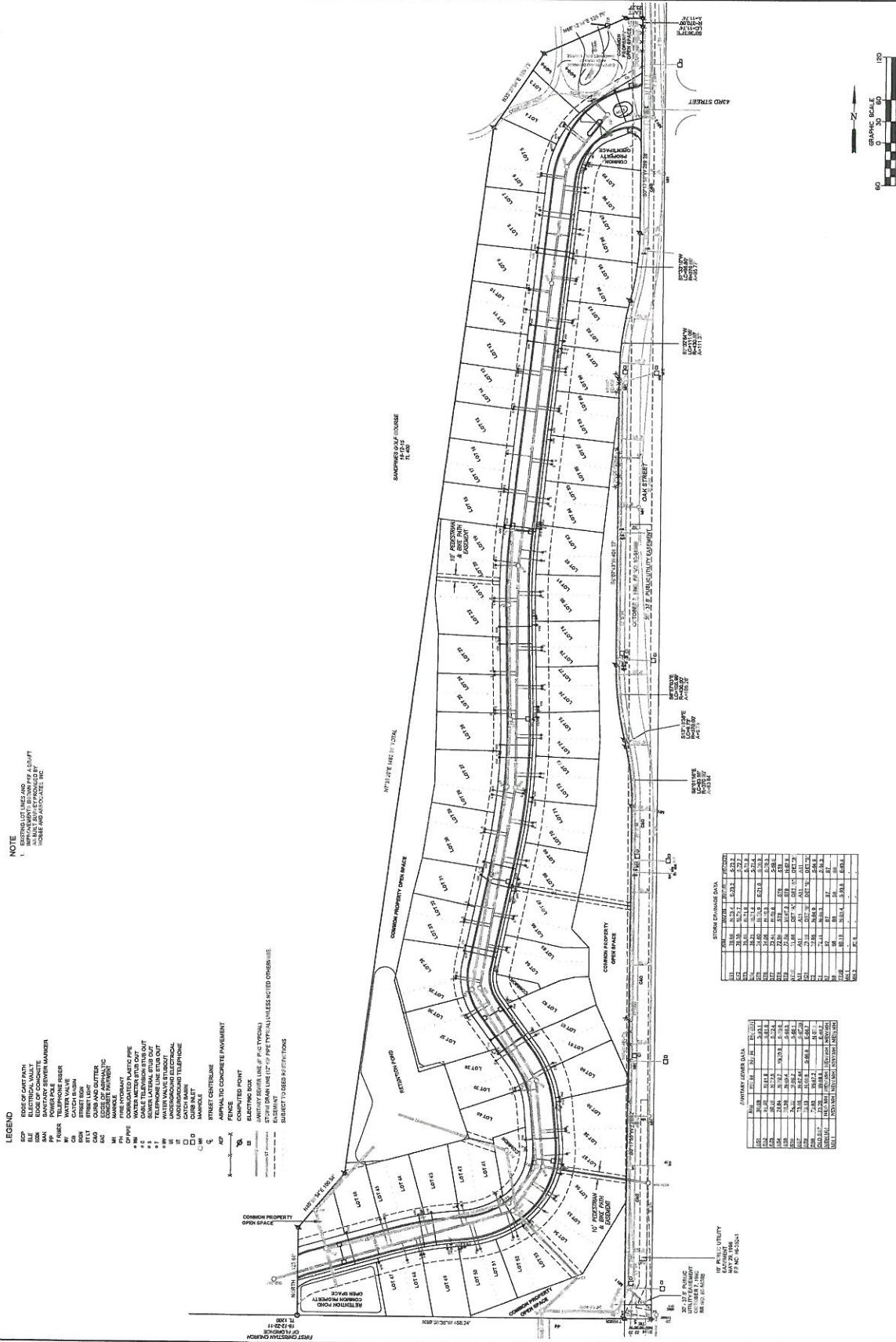


STORM DAMAGE DATA				
TYPE	NO.	DATE	NO.	NO.
WIND	11	11-14	11	11
WIND	12	11-14	12	12
WIND	13	11-14	13	13
WIND	14	11-14	14	14
WIND	15	11-14	15	15
WIND	16	11-14	16	16
WIND	17	11-14	17	17
WIND	18	11-14	18	18
WIND	19	11-14	19	19
WIND	20	11-14	20	20
WIND	21	11-14	21	21
WIND	22	11-14	22	22
WIND	23	11-14	23	23
WIND	24	11-14	24	24
WIND	25	11-14	25	25
WIND	26	11-14	26	26
WIND	27	11-14	27	27
WIND	28	11-14	28	28
WIND	29	11-14	29	29
WIND	30	11-14	30	30
WIND	31	11-14	31	31
WIND	32	11-14	32	32
WIND	33	11-14	33	33
WIND	34	11-14	34	34
WIND	35	11-14	35	35
WIND	36	11-14	36	36
WIND	37	11-14	37	37
WIND	38	11-14	38	38
WIND	39	11-14	39	39
WIND	40	11-14	40	40
WIND	41	11-14	41	41
WIND	42	11-14	42	42
WIND	43	11-14	43	43
WIND	44	11-14	44	44
WIND	45	11-14	45	45
WIND	46	11-14	46	46
WIND	47	11-14	47	47
WIND	48	11-14	48	48
WIND	49	11-14	49	49
WIND	50	11-14	50	50
WIND	51	11-14	51	51
WIND	52	11-14	52	52
WIND	53	11-14	53	53
WIND	54	11-14	54	54
WIND	55	11-14	55	55
WIND	56	11-14	56	56
WIND	57	11-14	57	57
WIND	58	11-14	58	58
WIND	59	11-14	59	59
WIND	60	11-14	60	60
WIND	61	11-14	61	61
WIND	62	11-14	62	62
WIND	63	11-14	63	63
WIND	64	11-14	64	64
WIND	65	11-14	65	65
WIND	66	11-14	66	66
WIND	67	11-14	67	67
WIND	68	11-14	68	68
WIND	69	11-14	69	69
WIND	70	11-14	70	70
WIND	71	11-14	71	71
WIND	72	11-14	72	72
WIND	73	11-14	73	73
WIND	74	11-14	74	74
WIND	75	11-14	75	75
WIND	76	11-14	76	76
WIND	77	11-14	77	77
WIND	78	11-14	78	78
WIND	79	11-14	79	79
WIND	80	11-14	80	80
WIND	81	11-14	81	81
WIND	82	11-14	82	82
WIND	83	11-14	83	83
WIND	84	11-14	84	84
WIND	85	11-14	85	85
WIND	86	11-14	86	86
WIND	87	11-14	87	87
WIND	88	11-14	88	88
WIND	89	11-14	89	89
WIND	90	11-14	90	90
WIND	91	11-14	91	91
WIND	92	11-14	92	92
WIND	93	11-14	93	93
WIND	94	11-14	94	94
WIND	95	11-14	95	95
WIND	96	11-14	96	96
WIND	97	11-14	97	97
WIND	98	11-14	98	98
WIND	99	11-14	99	99
WIND	100	11-14	100	100

SANTARY GENDER DATA				
	AGE	MALE	FEMALE	SEX RATIO
0-4	1019	1019	1019	1000
5-9	1019	1019	1019	1000
10-14	1019	1019	1019	1000
15-19	1019	1019	1019	1000
20-24	1019	1019	1019	1000
25-29	1019	1019	1019	1000
30-34	1019	1019	1019	1000
35-39	1019	1019	1019	1000
40-44	1019	1019	1019	1000
45-49	1019	1019	1019	1000
50-54	1019	1019	1019	1000
55-59	1019	1019	1019	1000
60-64	1019	1019	1019	1000
65-69	1019	1019	1019	1000
70-74	1019	1019	1019	1000
75-79	1019	1019	1019	1000
80-84	1019	1019	1019	1000
85-89	1019	1019	1019	1000
90-94	1019	1019	1019	1000
95-99	1019	1019	1019	1000
TOTAL	1019	1019	1019	1000



STORY DAMAGE DATA				
JOB	NO. OF STORIES	NO. OF DAMAGED STORIES	NO. OF DAMAGED FLOORS	NO. OF DAMAGED FLOORS
111	71.63	8.52	5.92	5.92
112	71.63	8.52	5.92	5.92
113	71.63	8.52	5.92	5.92
114	71.63	8.52	5.92	5.92
115	71.63	8.52	5.92	5.92
116	71.63	8.52	5.92	5.92
117	71.63	8.52	5.92	5.92
118	71.63	8.52	5.92	5.92
119	71.63	8.52	5.92	5.92
120	71.63	8.52	5.92	5.92
121	71.63	8.52	5.92	5.92
122	71.63	8.52	5.92	5.92
123	71.63	8.52	5.92	5.92
124	71.63	8.52	5.92	5.92
125	71.63	8.52	5.92	5.92
126	71.63	8.52	5.92	5.92
127	71.63	8.52	5.92	5.92
128	71.63	8.52	5.92	5.92
129	71.63	8.52	5.92	5.92
130	71.63	8.52	5.92	5.92
131	71.63	8.52	5.92	5.92
132	71.63	8.52	5.92	5.92
133	71.63	8.52	5.92	5.92
134	71.63	8.52	5.92	5.92
135	71.63	8.52	5.92	5.92
136	71.63	8.52	5.92	5.92
137	71.63	8.52	5.92	5.92
138	71.63	8.52	5.92	5.92
139	71.63	8.52	5.92	5.92
140	71.63	8.52	5.92	5.92
141	71.63	8.52	5.92	5.92
142	71.63	8.52	5.92	5.92
143	71.63	8.52	5.92	5.92
144	71.63	8.52	5.92	5.92
145	71.63	8.52	5.92	5.92
146	71.63	8.52	5.92	5.92
147	71.63	8.52	5.92	5.92
148	71.63	8.52	5.92	5.92
149	71.63	8.52	5.92	5.92
150	71.63	8.52	5.92	5.92
151	71.63	8.52	5.92	5.92
152	71.63	8.52	5.92	5.92
153	71.63	8.52	5.92	5.92
154	71.63	8.52	5.92	5.92
155	71.63	8.52	5.92	5.92
156	71.63	8.52	5.92	5.92
157	71.63	8.52	5.92	5.92
158	71.63	8.52	5.92	5.92
159	71.63	8.52	5.92	5.92
160	71.63	8.52	5.92	5.92
161	71.63	8.52	5.92	5.92
162	71.63	8.52	5.92	5.92
163	71.63	8.52	5.92	5.92
164	71.63	8.52	5.92	5.92
165	71.63	8.52	5.92	5.92
166	71.63	8.52	5.92	5.92
167	71.63	8.52	5.92	5.92
168	71.63	8.52	5.92	5.92
169	71.63	8.52	5.92	5.92
170	71.63	8.52	5.92	5.92
171	71.63	8.52	5.92	5.92
172	71.63	8.52	5.92	5.92
173	71.63	8.52	5.92	5.92
174	71.63	8.52	5.92	5.92
175	71.63	8.52	5.92	5.92
176	71.63	8.52	5.92	5.92
177	71.63	8.52	5.92	5.92
178	71.63	8.52	5.92	5.92
179	71.63	8.52	5.92	5.92
180	71.63	8.52	5.92	5.92

CONTINENT: AFRICA			
	Ref	N	n
151	3639	13119	5351
152	3170	3311	3311
153	6814	8726	6734
154	7684	1077	7628
155	7379	1064	5413
156	7266	3582	5451
157	7313	10744	5739
158	7313	1118	868
159	7673	7672	5687
160	7720	7672	1071
161	7673	7672	1071
162	7673	7672	1071
163	7673	7672	1071
164	7673	7672	1071
165	7673	7672	1071
166	7673	7672	1071
167	7673	7672	1071
168	7673	7672	1071
169	7673	7672	1071
170	7673	7672	1071
171	7673	7672	1071
172	7673	7672	1071
173	7673	7672	1071
174	7673	7672	1071
175	7673	7672	1071
176	7673	7672	1071
177	7673	7672	1071
178	7673	7672	1071
179	7673	7672	1071
180	7673	7672	1071
181	7673	7672	1071
182	7673	7672	1071
183	7673	7672	1071
184	7673	7672	1071
185	7673	7672	1071
186	7673	7672	1071
187	7673	7672	1071
188	7673	7672	1071
189	7673	7672	1071
190	7673	7672	1071
191	7673	7672	1071
192	7673	7672	1071
193	7673	7672	1071
194	7673	7672	1071
195	7673	7672	1071
196	7673	7672	1071
197	7673	7672	1071
198	7673	7672	1071
199	7673	7672	1071
200	7673	7672	1071

107 PUBLIC UTILITY  
EASTMENT

MAY 22, 1968  
P. J. NC 16-5561

Security, Inc.