

City of Florence Zoning Map

Bay Berry

Archer

Pine
Lakewood

Zoning Districts

Residential

- Restricted
- Single-Family
- Mobile Home/
Manufactured Home
- Multi-Family
- Coast Village

Commercial

- Neighborhood (NA)
- Mainstreet Area A
- Mainstreet Area B
- North Commercial
- Commercial
- Highway

Industrial

- Marine
- Pacific View Business Park
- Limited Industrial
- Service Industrial

Other

- Open Space
- Public Use Airport
- City Limits
- UGB

Mixed Use

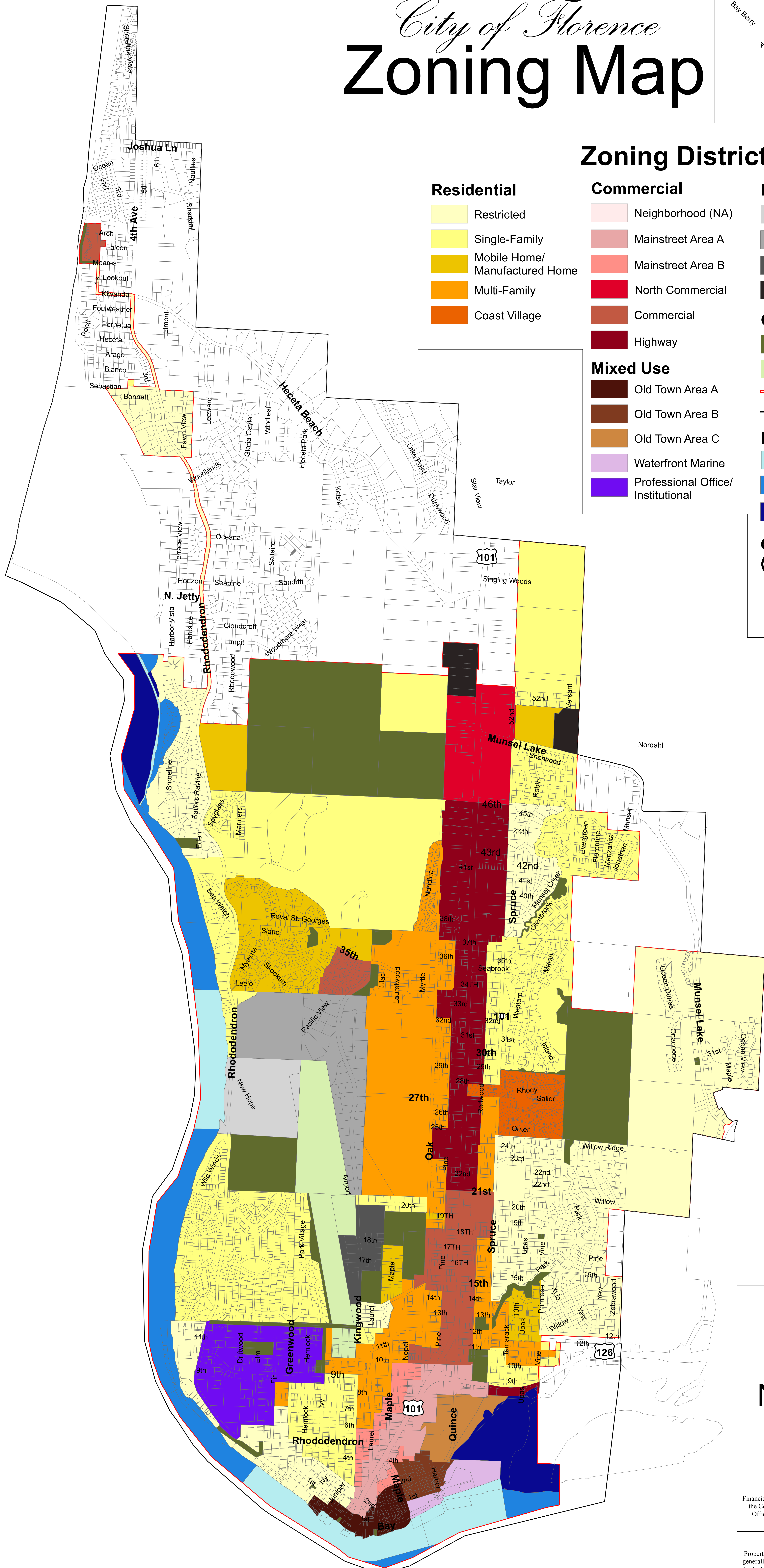
- Old Town Area A
- Old Town Area B
- Old Town Area C
- Waterfront Marine
- Professional Office/
Institutional

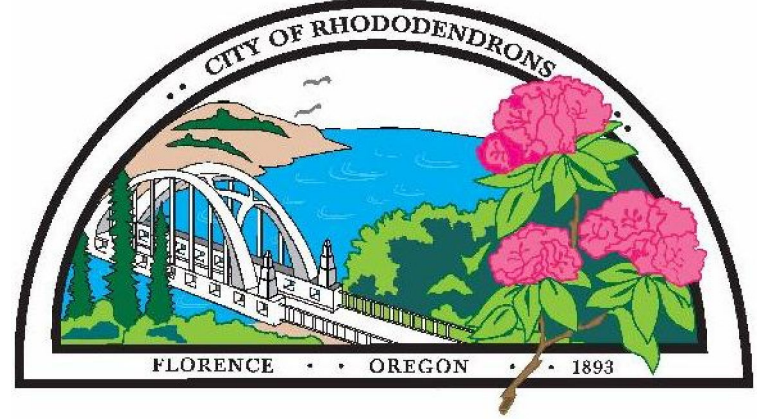
Estuaries

- Development Estuary
- Conservation Estuary
- Natural Estuary

Other Overlays (See Separate Maps)

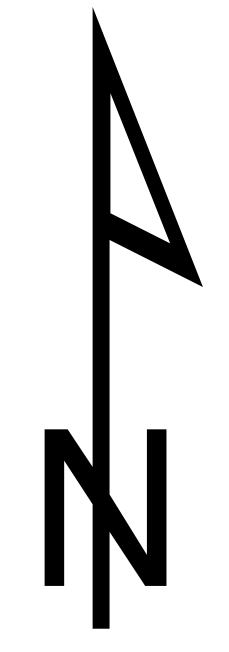
- Public Use Airport Safety & Compatibility
- Telecommunications Facilities
- Coastal Overlay Zoning Map





City of Florence
 250 Hwy 101 N.
 Florence, OR 97439
 (541) 997-8237

December 1, 2014



0 0.25 0.5

Miles

Financial assistance for this map and the data contained was provided in part by the Coastal Zone Management Act of 1972, as amended, administered by the Office of Ocean and Coastal Management Program, Department of Land Conservation and Development.

Property lines shown on this map have been gathered from various sources and generally reflect tax lot lines. These lines do not necessarily correspond to legal, buildable lots. Prior to making any decisions about a property, it is advised that you check with the City regarding the status of the lot.