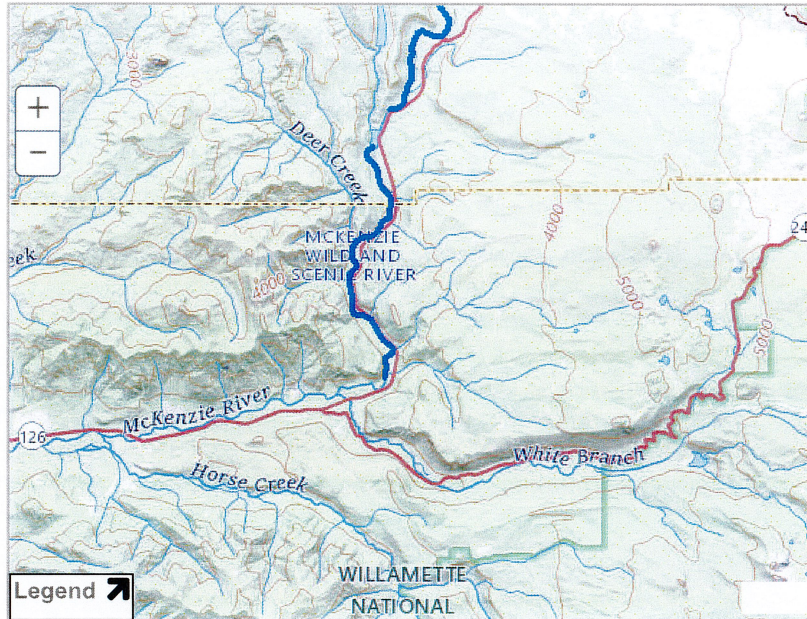




MCKENZIE RIVER, OREGON



Choose A State

Choose A River

Salmon, Native American culture, history, whitewater boating, unmatched beauty, world-renowned fishing, solitude, what don't Northwest rivers offer in abundance?

[+ View larger map](#)

Managing Agency:

U.S. Forest Service, Willamette National Forest

Designated Reach:

October 28, 1988. From Clear Creek to Scott Creek, not including Carmen and Trail Bridge Reservoir Dams.

Classification/Mileage:

Recreational — 12.7 miles; Total — 12.7 miles.



RELATED LINKS

McKenzie River (U.S. Forest Service)

Photo Credit: Unknown

McKenzie River

The McKenzie Wild and Scenic River was designated in 1988 for its outstandingly remarkable values of fish, scenic quality, recreation, hydrology/geology and water quality. The "Blue McKenzie" is well-known for its exceptional water quality, resulting from low turbidity, absence of organic material and the high water quality of its tributaries. The excellent quality of its fish habitat supports a variety of fish species, including three native wild trout—rainbow, bull and cutthroat trout—as well as wild spring Chinook. Recent vulcanism, including three distinctive lava flows, has shaped the river into pools, dramatic waterfalls and cascading whitewater. These features provide for exceptional whitewater boating, hiking and fishing.

[NATIONWIDE RIVERS INVENTORY](#) | [CONTACT US](#) | [PRIVACY NOTICE](#) | [Q & A SEARCH ENGINE](#) | [SITE MAP](#)



Designated Rivers

[About WSR Act](#)
[State Listings](#)
[Profile Pages](#)

National System

[WSR Table](#)
[Study Rivers](#)
[Stewardship](#)
[WSR Legislation](#)

River Management

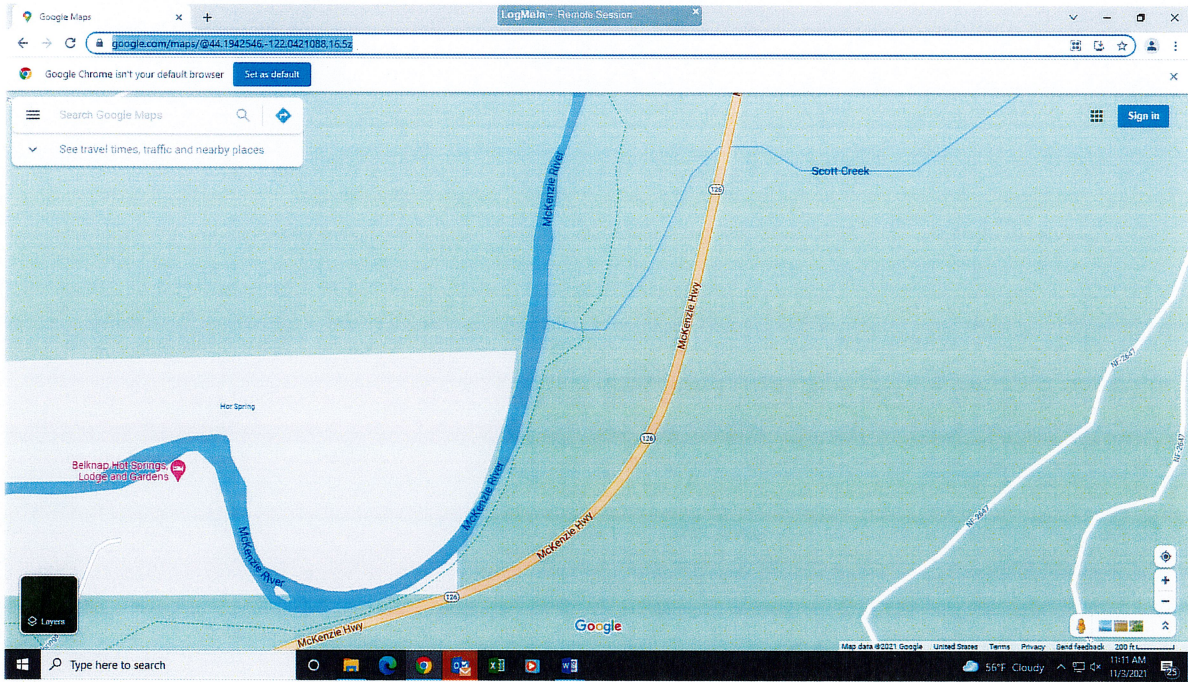
[Council](#)
[Agencies](#)
[Management Plans](#)
[River Mgt. Society](#)
[GIS Mapping](#)

Resources

[Q & A Search](#)
[Bibliography](#)
[Publications](#)
[GIS Mapping](#)
[Logo & Sign Standards](#)

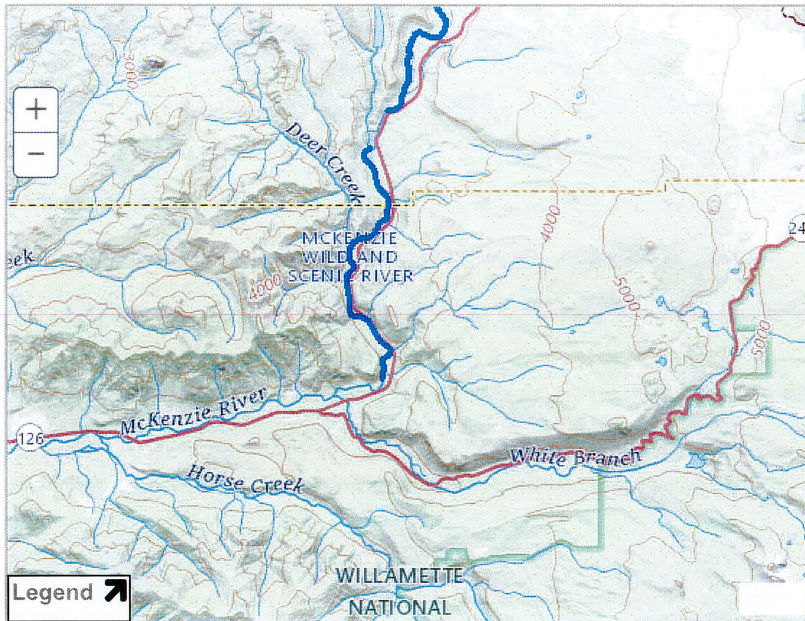


<https://www.google.com/maps/@44.1942546,-122.0421088,16.5z>





MCKENZIE RIVER, OREGON



Choose A State

Choose A River

Salmon, Native American culture, history, whitewater boating, unmatched beauty, world-renowned fishing, solitude, what don't Northwest rivers offer in abundance?

[+ View larger map](#)

Managing Agency:

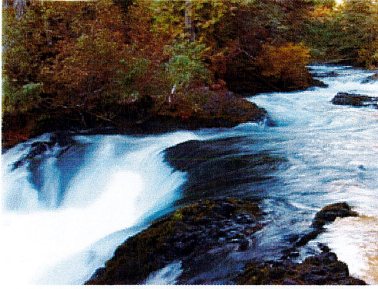
U.S. Forest Service, Willamette National Forest

Designated Reach:

October 28, 1988. From Clear Creek to Scott Creek, not including Carmen and Trail Bridge Reservoir Dams.

Classification/Mileage:

Recreational — 12.7 miles; Total — 12.7 miles.



RELATED LINKS

McKenzie River (U.S. Forest Service)

Photo Credit: Unknown

McKenzie River

The McKenzie Wild and Scenic River was designated in 1988 for its outstandingly remarkable values of fish, scenic quality, recreation, hydrology/geology and water quality. The "Blue McKenzie" is well-known for its exceptional water quality, resulting from low turbidity, absence of organic material and the high water quality of its tributaries. The excellent quality of its fish habitat supports a variety of fish species, including three native wild trout—rainbow, bull and cutthroat trout—as well as wild spring Chinook. Recent vulcanism, including three distinctive lava flows, has shaped the river into pools, dramatic waterfalls and cascading whitewater. These features provide for exceptional whitewater boating, hiking and fishing.

[NATIONWIDE RIVERS INVENTORY](#) | [CONTACT US](#) | [PRIVACY NOTICE](#) | [Q & A SEARCH ENGINE](#) | [SITE MAP](#)



Designated Rivers

[About WSR Act](#)
[State Listings](#)
[Profile Pages](#)

National System

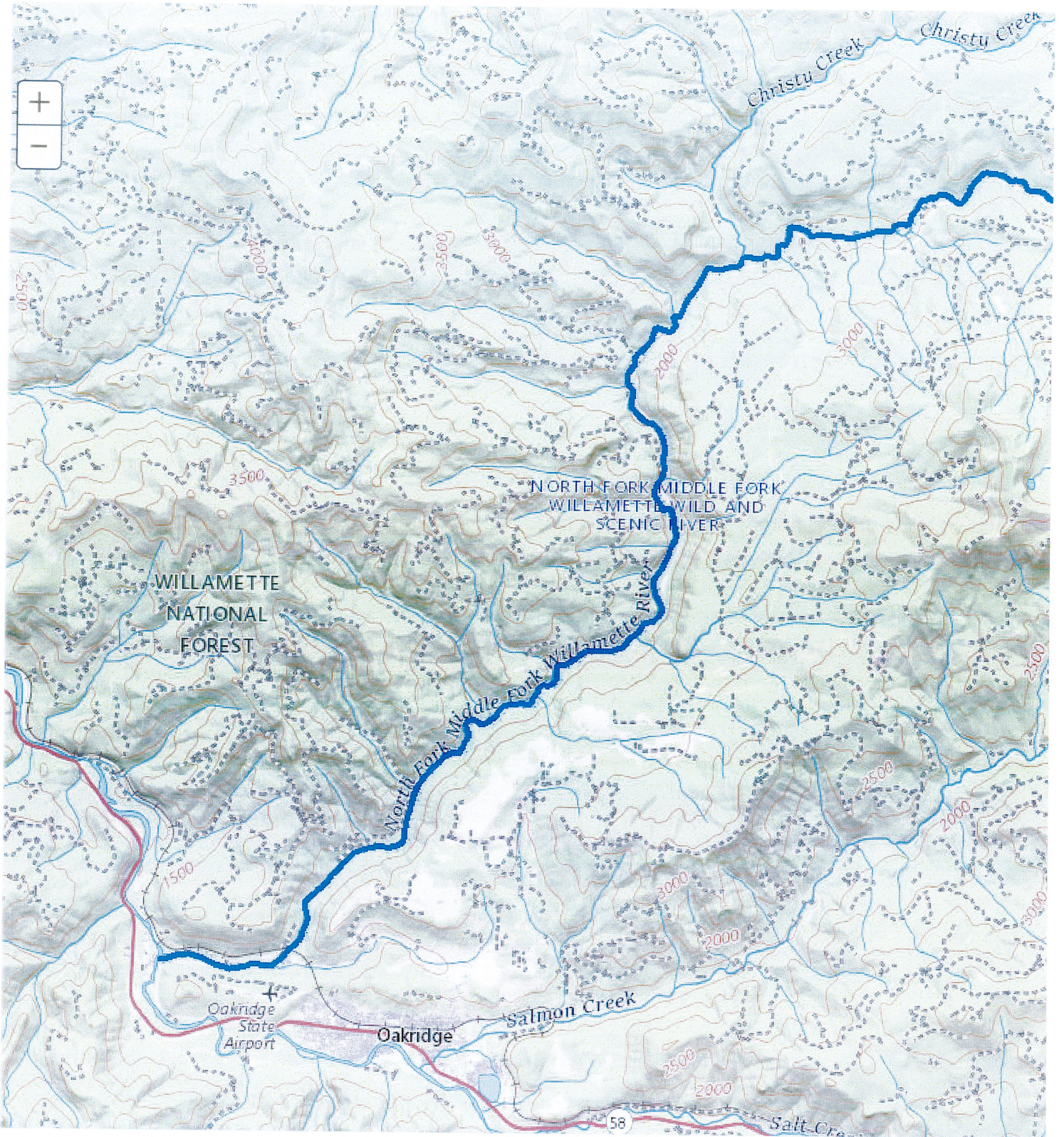
[WSR Table](#)
[Study Rivers](#)
[Stewardship](#)
[WSR Legislation](#)

River Management

[Council](#)
[Agencies](#)
[Management Plans](#)
[River Mgt. Society](#)
[GIS Mapping](#)

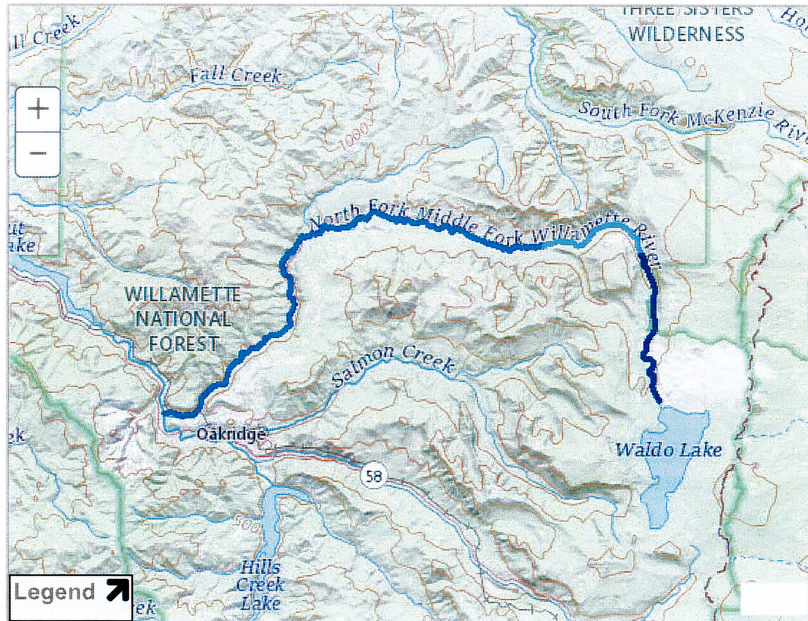
Resources

[Q & A Search](#)
[Bibliography](#)
[Publications](#)
[GIS Mapping](#)
[Logo & Sign Standards](#)





WILLAMETTE RIVER (N. FORK OF THE MID. FORK), OREGON



Choose A State

Choose A River

Salmon, Native American culture, history, whitewater boating, unmatched beauty, world-renowned fishing, solitude, what don't Northwest rivers offer in abundance?

[+ View larger map](#)

Managing Agency:

U.S. Forest Service, Willamette National Forest

Designated Reach:

October 28, 1988. From Waldo Lake to the Willamette National Forest boundary.

Classification/Mileage:

Wild — 8.8 miles; Scenic — 6.5 miles; Recreational — 27.0 miles; Total — 42.3 miles.

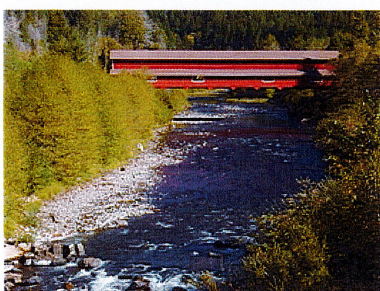


Photo Credit: Unknown

Willamette River (North Fork of the Middle Fork)

The North Fork of the Middle Fork of the Willamette River was designated as a wild and scenic river in 1988. Outstandingly remarkable values for the river include recreation, vegetation, scenic, water quality, fish, wildlife, geologic/hydrologic and historic.

The river corridor offers a diversity of recreation settings ranging from developed campgrounds to wilderness. Aufderheide Drive, designated as one of the original 50 of the National Forest Scenic Byways, and the southernmost portion of the West Cascades National Scenic Byway parallel the river for some 30 miles, offering access and views of the river to byway travelers and bicyclists.

The North Fork is one of the few rivers in western Oregon managed for wild trout—fly fishing only—by the Oregon Department of Fish and Wildlife. The vegetation along the river is diverse, because of its elevation range from 1100 to 5400 feet and diversity of landforms from marshy bogs to dry rock gardens.

Water quality is one of the most outstanding attributes of the North Fork, as its source, Waldo Lake, is regarded by some experts as one of the purest in the world. Roosevelt elk herds use the river corridor through the year, as do blacktail deer, black bear and cougar. The river cuts through two distinct geologic periods—the High Cascade, from 6,000 to 1 million years ago, and the Western Cascade, from 15 million to 25 million years ago.

[NATIONWIDE RIVERS INVENTORY](#) | [CONTACT US](#) | [PRIVACY NOTICE](#) | [Q & A SEARCH ENGINE](#) | [SITE MAP](#)



Designated Rivers

[About WSR Act](#)
[State Listings](#)
[Profile Pages](#)

National System

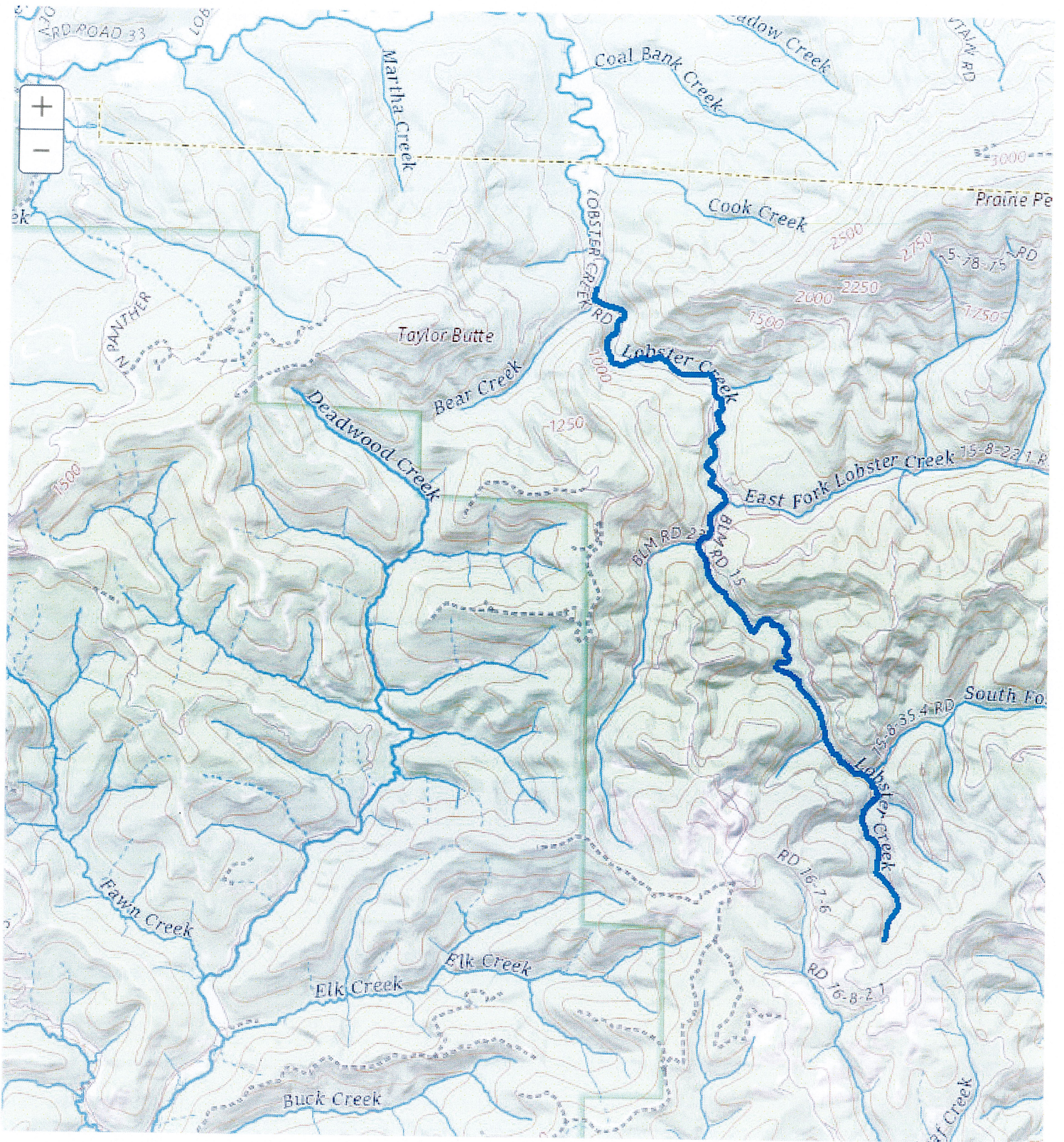
[WSR Table](#)
[Study Rivers](#)
[Stewardship](#)
[WSR Legislation](#)

River Management

[Council](#)
[Agencies](#)
[Management Plans](#)
[River Mgt. Society](#)
[GIS Mapping](#)

Resources

[Q & A Search](#)
[Bibliography](#)
[Publications](#)
[GIS Mapping](#)
[Logo & Sign Standards](#)





LOBSTER CREEK, OREGON



Choose A State

Choose A River

Seen as barren by the first explorers to today's first-time visitors, the rivers of the high desert simply hide their treasures well.

[+ View larger map](#)

Managing Agency:

Bureau of Land Management

Designated Reach:

March 12, 2019. From T 15 S, R 8 W, Section 35, Willamette Meridian, downstream to the northern edge of the Bureau of Land Management boundary in T 15 S, R 8 W, Section 15, Willamette Meridian.

Classification/Mileage:

Recreational — 5.0 miles; Total — 5.0 miles.

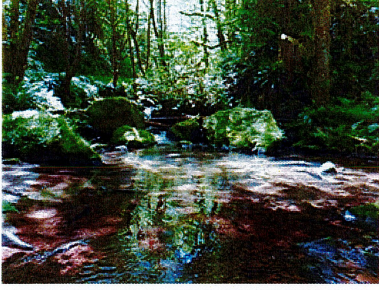


Photo Credit: Jonas Parker, BLM

Lobster Creek

The five-mile designated segment of Lobster Creek flows generally south to north through the wooded foothills of Oregon's Coast Range. Its coldwater core habitat for native fishes and pristine water quality make it one of the region's top producers of wild coho salmon, wild winter steelhead, and wild fall Chinook salmon. In addition, the cold water contribution of Lobster Creek greatly benefits downstream water quality and users such as fish, wildlife, and recreators. The forested riparian areas surrounding the creek are largely Late Successional Reserves managed by the Bureau of Land Management. Lobster Creek receives a low level of dispersed recreational use.

Lobster Creek is southwest of the town of Alsea, Oregon, and can be accessed from Lobster Creek Road, which runs alongside the entire wild and scenic river segment.

[NATIONWIDE RIVERS INVENTORY](#) | [CONTACT US](#) | [PRIVACY NOTICE](#) | [Q & A SEARCH ENGINE](#) | [SITE MAP](#)



Designated Rivers

[About WSR Act](#)
[State Listings](#)
[Profile Pages](#)

National System

[WSR Table](#)
[Study Rivers](#)
[Stewardship](#)
[WSR Legislation](#)

River Management

[Council](#)
[Agencies](#)
[Management Plans](#)
[River Mgt. Society](#)
[GIS Mapping](#)

Resources

[Q & A Search](#)
[Bibliography](#)
[Publications](#)
[GIS Mapping](#)
[Logo & Sign Standards](#)

[Nationwide Rivers Inventory \(nps.gov\)](https://www.nps.gov)

The screenshot shows a web browser window displaying the Nationwide Rivers Inventory page. The browser's address bar shows the URL: <https://www.nps.gov/maps/full.html?mapId=8adbe798-0d7e-407e-bd48-225513d64977>. The page title is "Nationwide Rivers Inventory" and it includes the National Park Service logo and the text "National Park Service U.S. Department of the Interior". Below the title, a subtitle reads: "This is a listing of more than 3,200 free-flowing river segments in the U.S. that are believed to possess one or more 'outstandingly remarkable' values." The main content is a satellite map of a forested region in Oregon, with several rivers highlighted in blue. Labels on the map include "McKenzie River", "Gold Creek", "Bear Creek", "Cottonwood Rd", "McKenzie Hwy", and "McKenzie Falls". A search bar in the top right corner contains the text "Bear Creek, Oregon". The bottom of the browser window shows the Windows taskbar with various application icons and a system tray displaying the weather as "49°F Rain to stop" and the time as "10:38 AM 11/5/2021".

Bear Creek, Lane Co., OR

LogMeIn - Remote Session

http://www.nps.gov/subjects/rivers/oregon.htm

Environmental Guidance ... Business Oregon IFA CDB... Regional Land Informatio... Suggested Sites Web Slice Gallery

Barnes Valley Creek	Klamath	BLM/U.S. Forest Service boundary (Sec. 29, T.39 S., R.15 E.) to ford on CCC Road (Sec. 22, T.39 S., R.14 E.)	6	Steep basalt cliffs forming canyon walls. Provides both vegetative and geologic diversity.	Scenic	Scenic	Lost	1993
Bear Creek	Lane	Headwaters in Sec. 18, T.16 S., R.3 E. to confluence with McKenzie River	4	Steelhead run is one of few remaining native, wild runs in McKenzie River Basin. Numerous other fish species.	Wild	Fish	Mckenzie	1993
Boulder Creek	Douglas	Within Boulder Creek Wilderness	8		Wild	Scenic	North Umpqua	1993
Breitenbush River	Marion	Confluence of North and South Forks of	10	Camping, fishing, commercial resort activities, kayaking, hiking, and	heavy use by elk and deer	and habitat areas for sensitive and threatened	Recreational Santiam	Recreational North 1982/1993

2:57 PM 4/23/2020

LogMeIn - Remote Session

http://www.nps.gov/maps/full.html?mapId=8adba798-0d7e-40fb-bd48-225513d64977

Environmental Guidance ... Business Oregon IFA CDB... Regional Land Informatio... Suggested Sites Web Slice Gallery

Nationwide Rivers Inventory

National Park Service
U.S. Department of the Interior

This is a listing of more than 3,200 free-flowing river segments in the U.S. that are believed to possess one or more "outstandingly remarkable" values.

Lane County, OR Beer Cr...
Park Tiles Imagery

10 mi

Disclaimer | Geocoding by Esri | Mapbox | OpenStreetMap contributors

Home Frequently Asked Questions Website Policies Contact Us

EXPERIENCE YOUR AMERICA™

2:47 PM 4/23/2020

Wild and Scenic Rivers (CEST and EA)

General requirements	Legislation	Regulation
The Wild and Scenic Rivers Act provides federal protection for certain free-flowing, wild, scenic and recreational rivers designated as components or potential components of the National Wild and Scenic Rivers System (NWSRS) from the effects of construction or development.	The Wild and Scenic Rivers Act (16 U.S.C. 1271-1287), particularly section 7(b) and (c) (16 U.S.C. 1278(b) and (c))	36 CFR Part 297
References		
https://www.hudexchange.info/environmental-review/wild-and-scenic-rivers		

1. Is your project within proximity of a NWSRS river as defined below?

Wild & Scenic Rivers: These rivers or river segments have been designated by Congress or by states (with the concurrence of the Secretary of the Interior) as wild, scenic, or recreational

Study Rivers: These rivers or river segments are being studied as a potential component of the Wild & Scenic River system.

Nationwide Rivers Inventory (NRI): The National Park Service has compiled and maintains the NRI, a register of river segments that potentially qualify as national wild, scenic, or recreational river areas

No

→ Based on the response, the review is in compliance with this section. Continue to the Worksheet Summary below. Provide documentation used to make your determination, such as a map identifying the project site and its surrounding area or a list of rivers in your region in the Screen Summary at the conclusion of this screen.

Yes, the project is in proximity of a Nationwide Rivers Inventory (NRI) River.

→ Continue to Question 2.

2. Could the project do *any* of the following?

- Have a direct and adverse effect within Wild and Scenic River Boundaries,
- Invade the area or unreasonably diminish the river outside Wild and Scenic River Boundaries, or
- Have an adverse effect on the natural, cultural, and/or recreational values of a NRI segment.

Consultation with the appropriate federal/state/local/tribal Managing Agency(s) is required, pursuant to Section 7 of the Act, to determine if the proposed project may have an adverse effect on a Wild & Scenic River or a Study River and, if so, to determine the appropriate avoidance or mitigation measures.

Note: Concurrence may be assumed if the Managing Agency does not respond within 30 days; however, you are still obligated to avoid or mitigate adverse effects on the rivers identified in the NWSRS

No, the Managing Agency has concurred that the proposed project will not alter, directly, or indirectly, any of the characteristics that qualifies or potentially qualifies the river for inclusion in the NWSRS.

→ *Based on the response, the review is in compliance with this section. Continue to the Worksheet Summary below. Provide documentation of the consultation (including the Managing Agency's concurrence) and any other documentation used to make your determination.*

Yes, the Managing Agency was consulted and the proposed project may alter, directly, or indirectly, any of the characteristics that qualifies or potentially qualifies the river for inclusion in the NWSRS.

→ *Continue to Question 3.*

3. For the project to be brought into compliance with this section, all adverse impacts must be mitigated. Explain in detail the proposed measures that must be implemented to mitigate for the impact or effect, including the timeline for implementation.

→ *Continue to the Worksheet Summary below. Provide documentation of the consultation (including the Managing Agency's concurrence) and any other documentation used to make your determination.*

Worksheet Summary

Compliance Determination

Provide a clear description of your determination and a synopsis of the information that it was based on, such as:

- Map panel numbers and dates
- Names of all consulted parties and relevant consultation dates
- Names of plans or reports and relevant page numbers
- Any additional requirements specific to your region

Our project will have “No Effect” on designated Wild & Scenic Rivers located within our service area of Lane County because all stream segments are not located in or down stream of residential areas where an individual homeowner can own both the house and the land as the segments are located either on National Forest or BLM lands. (See Tab J of Maps for McKenzie River, N Fork Mid. Fork Willamette River, Lobster Creek & Bear Creek) If any residential structures are on these lands, the real property is owned by the government and not the individual. The Regional Housing Rehabilitation Program issues real estate secured loans, hence the borrower must own the real property. Therefore if there were an applicant with home located in one of these areas, the property would not be eligible for the housing rehabilitation loan program.

Are formal compliance steps or mitigation required?

Yes

No