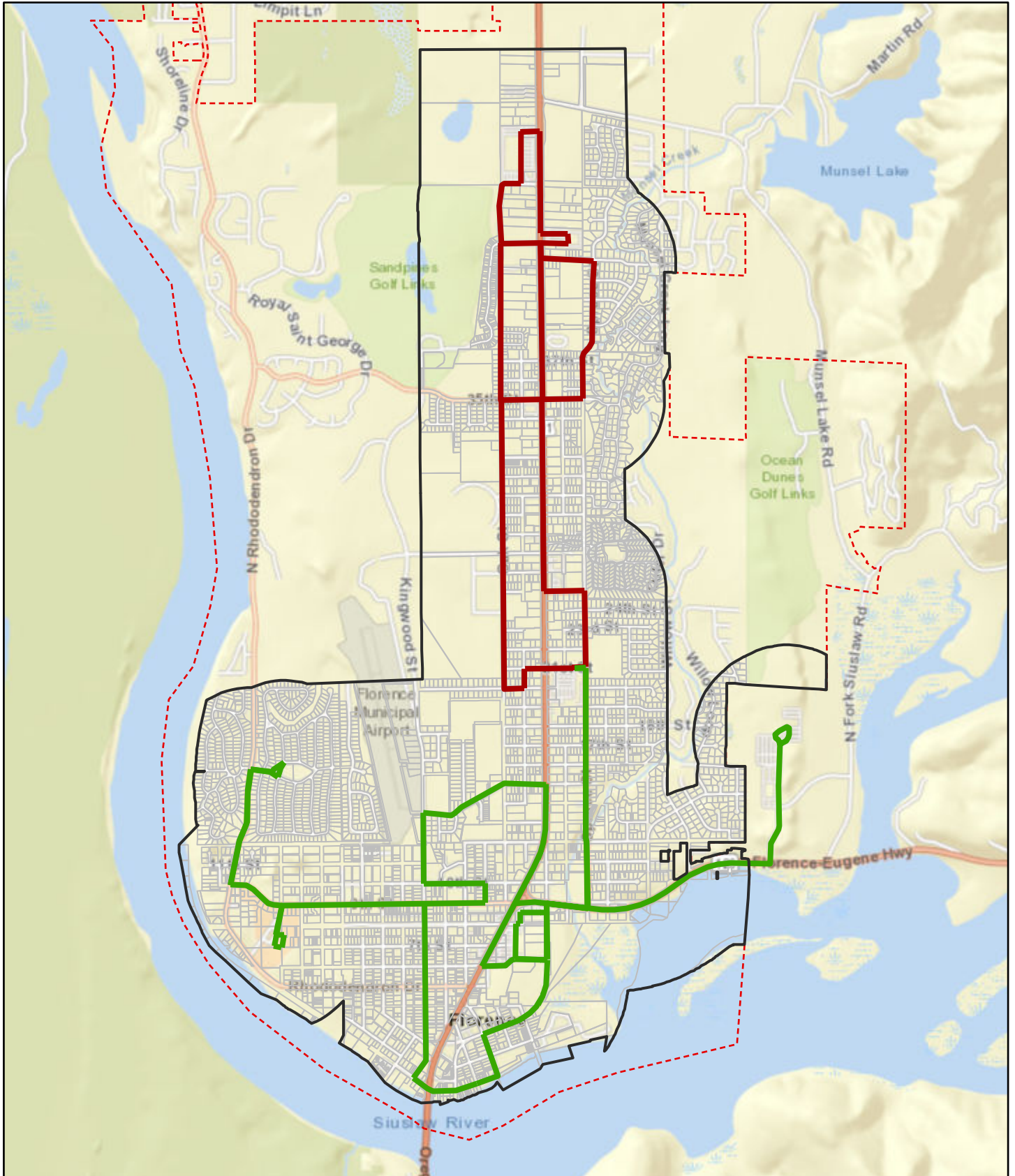


Transit-oriented Development



11/24/2021


1:36,112

 DRAFT 1/4 Mile Transit-Oriented Development Zone

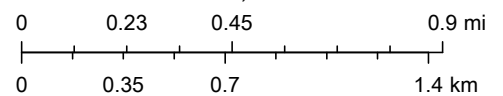
Rhody Express Routes (DRAFT)

 North

 South

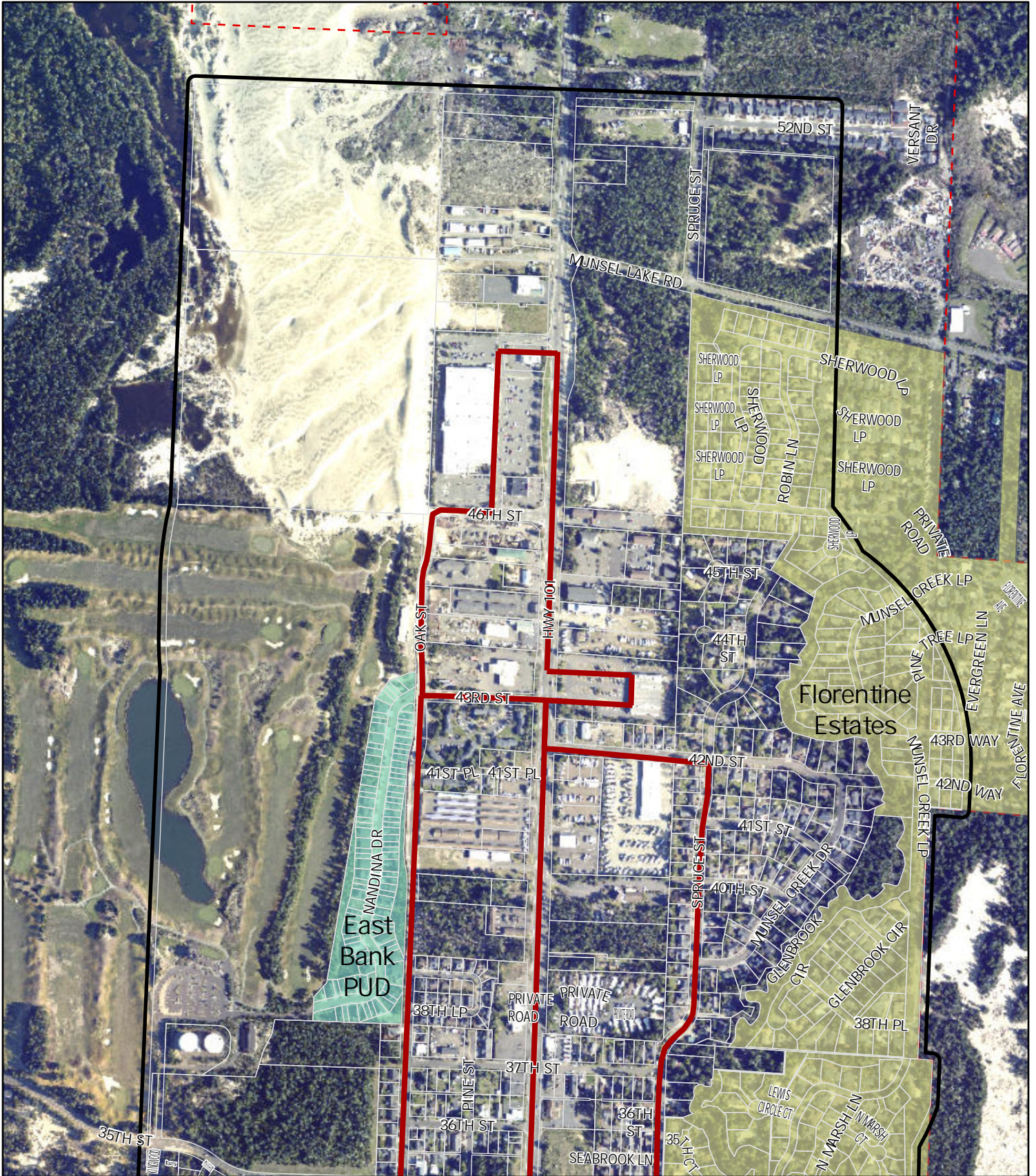
 TL_within_1320_Rhody_Express

 City Limits



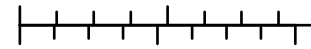
Bureau of Land Management, State of Oregon GEO, State of Oregon, Esri, HERE, Garmin, NGA, USGS, U.S. Forest Service

MUPTA Air Photo 1



- Rhody Express North Route
- South
- DRAFT 1/4 Mile TODZ
- Tax lots in TODZ
- FLO_CITY_LIMITS

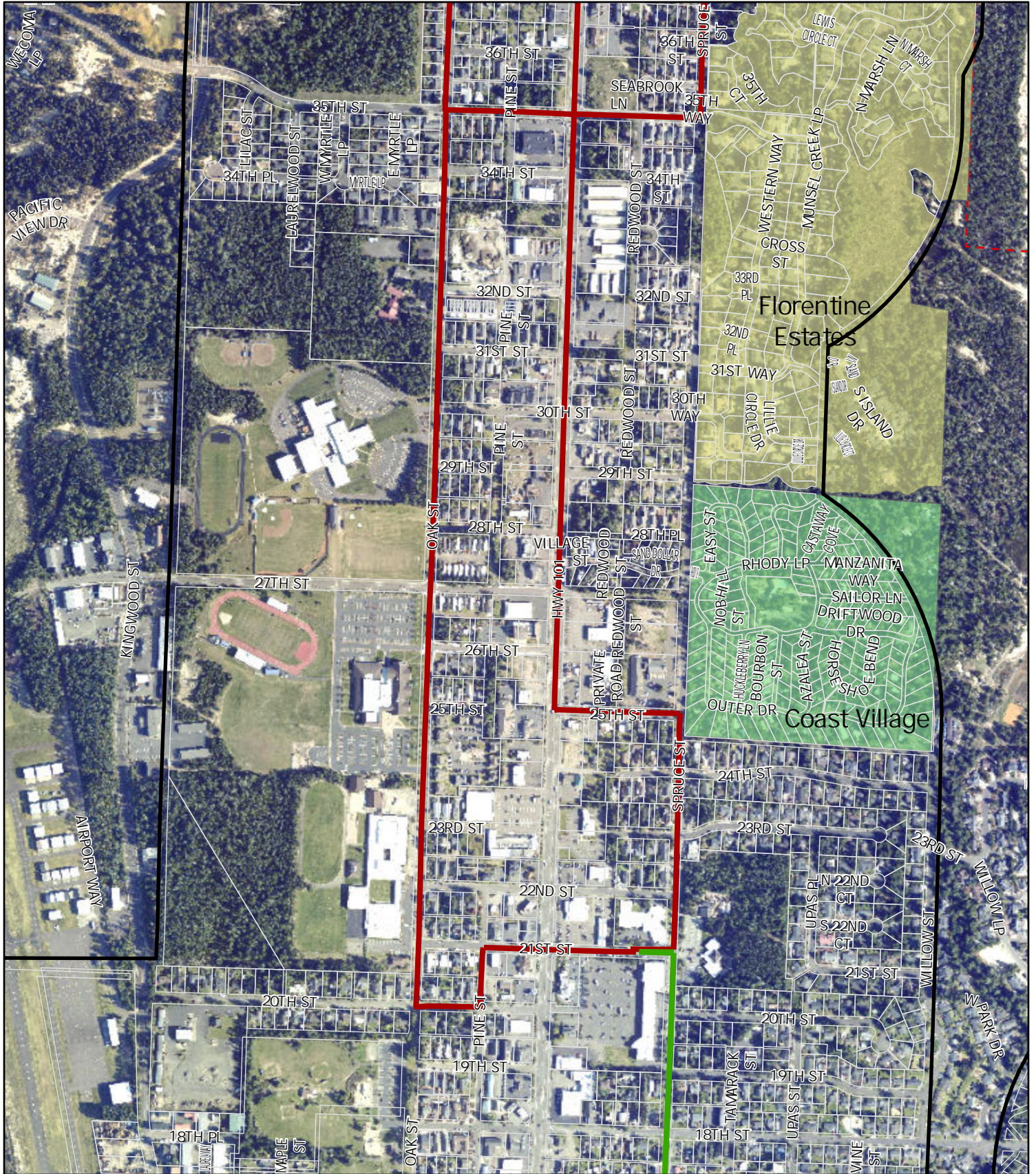
0 0.05 0.1 0.2 Miles



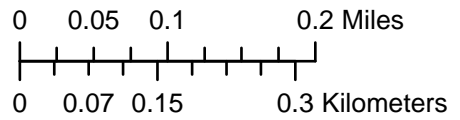
0 0.07 0.15 0.3 Kilometers

2021 Imagery
 Map Date: 11/24/2021
 City of Florence | GIS

MUPTA Air Photo 2



- Rhody Express North Route
- South
- DRAFT 1/4 Mile TODZ
- Tax lots in TODZ
- FLO_CITY_LIMITS

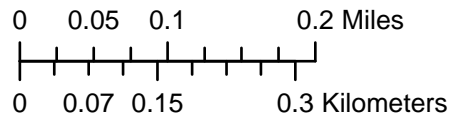


2021 Imagery
 Map Date: 11/24/2021
 City of Florence | GIS

MUPTA Air Photo 3



- Rhody Express North Route
- South
- DRAFT 1/4 Mile TODZ
- Tax lots in TODZ
- FLO_CITY_LIMITS

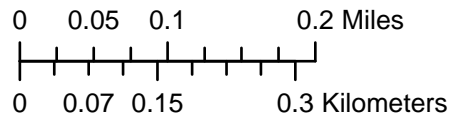


2021 Imagery
 Map Date: 11/24/2021
 City of Florence | GIS

MUPTA Air Photo 4

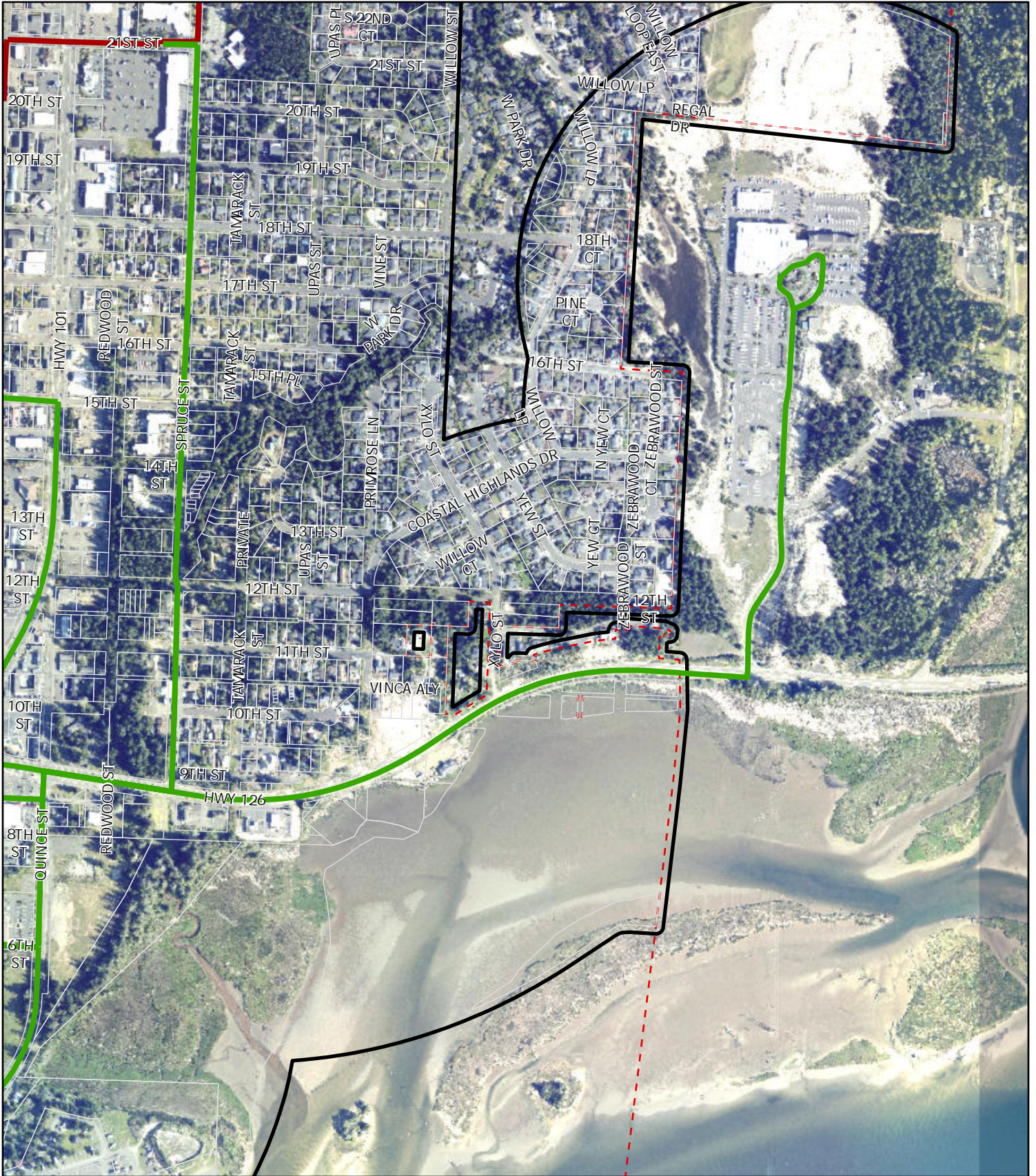


- Rhody Express North Route
- South
- DRAFT 1/4 Mile TODZ
- Tax lots in TODZ
- FLO_CITY_LIMITS

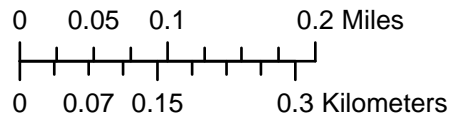


2021 Imagery
 Map Date: 11/24/2021
 City of Florence | GIS

MUPTA Air Photo 5



- Rhody Express North Route
- South
- DRAFT 1/4 Mile TODZ
- Tax lots in TODZ
- FLO_CITY_LIMITS



2021 Imagery
 Map Date: 11/24/2021
 City of Florence | GIS