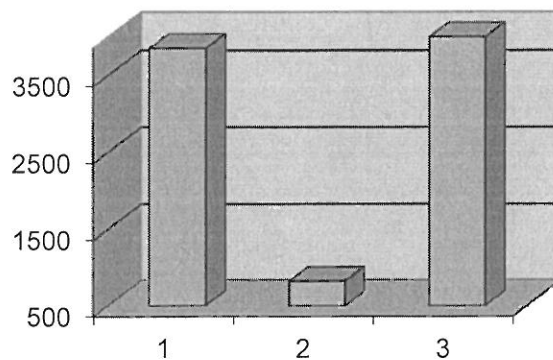


## Rhody Express FY 2012/13

Month	Elderly	Disabled	General	Companion	Mo.Total	Qtr.Total to Date
<b>1st.Qtr.</b>						
July	532	76	348	139	<b>1095</b>	
August	440	43	358	123	<b>964</b>	
September	407	33	321	51	<b>812</b>	
<b>Total</b>	<b>1379</b>	<b>152</b>	<b>1027</b>	<b>313</b>		<b>2871</b>
<b>2nd Qtr.</b>						
October	397	48	417	80	<b>942</b>	
November	239	61	537	85	<b>922</b>	
December	385	50	335	39	<b>809</b>	
<b>Total</b>	<b>1021</b>	<b>159</b>	<b>1289</b>	<b>204</b>		<b>2673</b>
<b>3rd Qtr.</b>						
January	354	51	335	67	<b>807</b>	
February	319	51	304	71	<b>745</b>	
March	269	66	303	69	<b>707</b>	
<b>Total</b>	<b>942</b>	<b>168</b>	<b>942</b>	<b>207</b>		<b>2259</b>
<b>4th Qtr.</b>						
April	241	159	399	84	<b>883</b>	
May	271	184	510	72	<b>1037</b>	
June					<b>0</b>	
<b>Total</b>	<b>512</b>	<b>343</b>	<b>909</b>	<b>156</b>		
<b>Total to Date</b>	<b>3854</b>	<b>822</b>	<b>4167</b>	<b>880</b>		<b>9723</b>

1 Elderly  
2 Disabled  
3 General Public



FY 2012/13  
(11 months only)  
Existing Bus Stops  
Rhody Express Ridership Boarding

The attached breakdown includes paying customers boarding at scheduled stops; it does not include any companion(s). While we do count the companion(s) in our daily tally, we do not track the boarding or de-boarding location.

The far right column reflects the percentage (%) of riders boarding at the specific bus stop. Where there is no % listed it is a location with multiple stops per hour, therefore the total % for this location is reflected in the first stop per hour. The -1 reflects less than 1% of the ridership boards at this location.

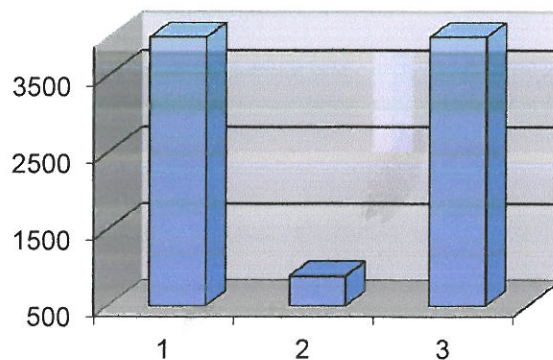
---

[illegible]

## Rhody Express FY 2011/12

Month	Elderly	Disabled	General	Companion	Mo.Total	Qtr.Total to Date
<b>1st.Qtr.</b>						
July	480	131	340	25	976	
August	675	93	275	86	1129	
September	619	49	278	20	966	
Total	1774	273	893	131		3071
<b>2nd Qtr.</b>						
October	566	53	254	9	882	
November	661	55	335	25	1076	
December	606	94	376	36	1112	
Total	1833	202	965	70		3070
<b>3rd Qtr.</b>						
January	601	65	406	72	1144	
February	560	65	419	86	1130	
March	510	39	466	61	1076	
Total	1671	169	1291	219		3350
<b>4th Qtr.</b>						
April	465	73	402	86	1026	
May	542	91	648	149	1430	
June	477	81	363	184	1105	
Total	1484	245	1413	419		3561
<b>Total to Date</b>	<b>6762</b>	<b>889</b>	<b>4562</b>	<b>839</b>		<b>13052</b>

1 Elderly  
2 Disabled  
3 General Public



FY 2011/12

Existing Bus Stops

Rhody Express Ridership Boarding

The attached breakdown includes paying customers boarding at scheduled stops; it does not include any companion(s). While we do count the companion(s) in our daily tally, we do not track the boarding or de-boarding location.

The far right column reflects the percentage (%) of riders boarding at the specific bus stop. Where there is no % listed it is a location with multiple stops per hour, therefore the total % for this location is reflected in the first stop per hour. The -1 reflects less than 1% of the ridership boards at this location.

---



[illegible]