

LEGEND

FACILITIES	EXISTING	FUTURE
BUILDINGS	[Symbol]	[Symbol]
RUNWAY	[Symbol]	[Symbol]
BUILDING RESTRICTION LINE (BRL)	BRL (E)	BRL (E)
AIRCRAFT PARKING LINE (APL)	APL (E)	APL (E)
AIRCRAFT PROPERTY LINE	[Symbol]	[Symbol]
RUNWAY SAFETY AREA (RSA)	[Symbol]	[Symbol]
OBJECT FREE AREA (OFA)	[Symbol]	[Symbol]
OBSTACLE FREE ZONE (OFZ)	[Symbol]	[Symbol]
TAXIWAY OBJECT FREE AREA (TOFA)	[Symbol]	TOFA
RUNWAY PROTECTION ZONE (RPZ)	[Symbol]	[Symbol]
GROUND CONTOURS	10	SAME
AIRPORT REFERENCE POINT (ARP)	[Symbol]	[Symbol]
REIL	[Symbol]	[Symbol]
VISUAL GUIDANCE INDICATORS	□ PAPI	■ PAPI
WIND INDICATOR	[Symbol]	[Symbol]
SEGMENTED CIRCLE WIND INDICATOR	(P)	(P)
FENCE	X X	XX XX
BEACON	[Symbol]	SAME
THRESHOLD LIGHTS	OOO OOO	●●● ●●●
PROPOSED AIRFIELD PAVEMENT	N/A	[Symbol]
VEHICLE PARKING	N/A	[Symbol]
TREES/BRUSH	[Symbol]	SAME
AVIGATION EASEMENT	[Symbol]	[Symbol]

BUILDING/FACILITY KEY

- | | |
|------------------------------|--|
| ① SEGMENTED CIRCLE | ⑨ HELICOPTER PARKING PAD (EXISTING) |
| ② FBO | ⑩ FUEL ISLAND (FUTURE) |
| ③ HANGAR (EXISTING) | ⑪ AWOS |
| ④ HANGAR (FUTURE) | ⑫ AIRPORT INDUSTRIAL PARK (NON-AVIATION) |
| ⑤ COMMERCIAL HANGAR (FUTURE) | ⑬ AUTO PARKING (EXISTING) |
| ⑥ T-HANGAR (FUTURE) | ⑭ AUTO PARKING (FUTURE) |
| ⑦ FUEL APRON (EXISTING) | ⑮ FUEL ISLAND (TO BE RELOCATED) |
| ⑧ AIRCRAFT APRON (EXISTING) | ⑯ RELOCATED WIND INDICATOR |

MODIFICATION TO STANDARDS

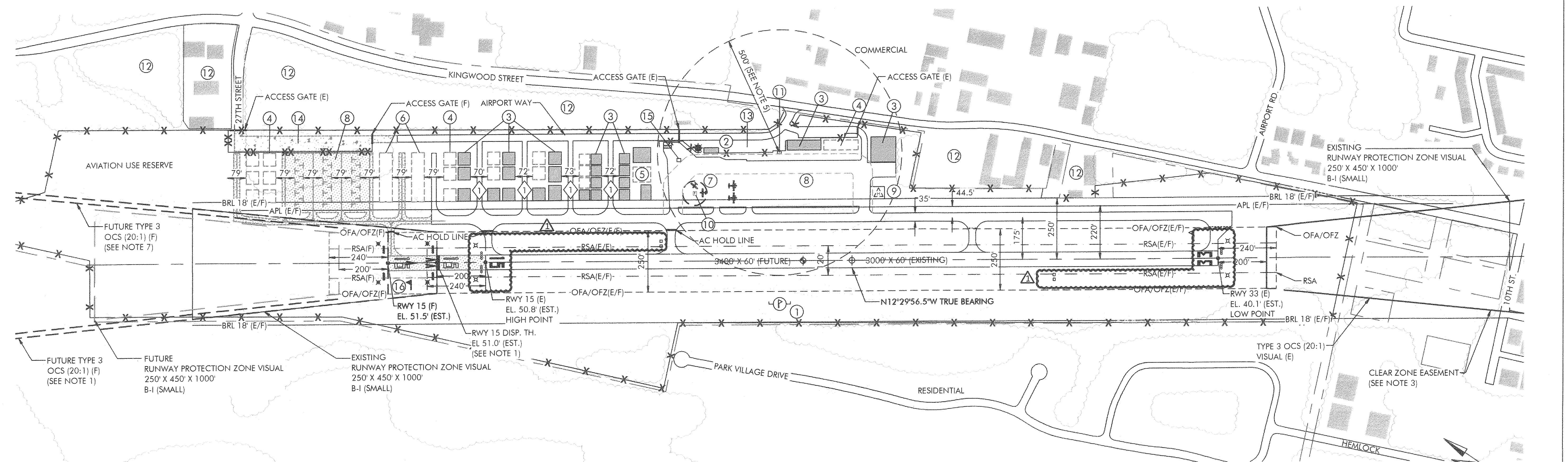
NO.	ITEM	DESCRIPTION	DISPOSITION
①	TAXILANE OFA	LESS THAN STANDARD ADG I SPACING FOR HANGAR ROWS	FAA ALTERNATIVE OFA CLEARANCE FORMULA

ARP COORDINATES

	LAT.	LONG.
EXISTING	N 43° 58' 58.14"	W 124° 06' 40.93"
FUTURE	N 43° 59' 00.07"	W 124° 06' 41.52"

NOTES

- ELIMINATION OF FUTURE RUNWAY 15 DISPLACED THRESHOLD AND ITS OCS IS DEPENDENT ON APPROACH OBSTRUCTION (SAND DUNE) REMOVAL.
- BUILDING HEIGHTS RANGE FROM 18' TO 26'.
- AVIGATION EASEMENTS ACQUIRED FOR PORTIONS OF RWY 33 NOT IN CITY OWNERSHIP.
- SEE SHEET 8 FOR NORTH AIRPORT PROPERTY BOUNDARY.
- THE EXISTING AWOS SITE DOES NOT MEET FAA CLEAR AREA STANDARD DUE TO ABSENCE OF ALTERNATIVE SITE LOCATIONS ON AIRPORT.
- SEE EXHIBIT A (SHEET 8) FOR EXISTING AVIGATION EASEMENTS ASSOCIATED WITH AIRPORT.
- FUTURE RUNWAY 15 OCS MAY BE REQUIRED (DEPENDENT ON AMOUNT OF SAND DUNE REMOVAL).



THE PREPARATION OF THIS DOCUMENT MAY HAVE BEEN SUPPORTED, IN PART, THROUGH THE AIRPORT IMPROVEMENT PROGRAM FINANCIAL ASSISTANCE FROM THE FEDERAL AVIATION ADMINISTRATION (PROJECT NUMBER 3-41-0019-009) AS PROVIDED UNDER TITLE 49, UNITED STATES CODE, SECTION 47104. THE CONTENTS DO NOT NECESSARILY REFLECT THE OFFICIAL VIEWS OR POLICY OF THE FAA. ACCEPTANCE OF THIS REPORT BY THE FAA DOES NOT IN ANY WAY CONSTITUTE A COMMITMENT ON THE PART OF THE UNITED STATES TO PARTICIPATE IN ANY DEVELOPMENT DEPICTED THEREIN NOR DOES IT INDICATE THAT THE PROPOSED DEVELOPMENT IS ENVIRONMENTALLY ACCEPTABLE IN ACCORDANCE WITH APPROPRIATE PUBLIC LAWS.

<table border="1"> <thead> <tr> <th>NO.</th> <th>DATE</th> <th>BY</th> <th>APPR</th> <th>REVISIONS</th> </tr> </thead> <tbody> <tr> <td>1</td> <td>6-19</td> <td>JLS</td> <td>GJR</td> <td>AS BUILT AIP #013-2018</td> </tr> </tbody> </table>	NO.	DATE	BY	APPR	REVISIONS	1	6-19	JLS	GJR	AS BUILT AIP #013-2018	<p>VERIFY SCALES BAR IS ONE INCH ON ORIGINAL DRAWING. 0" [Symbol] 1" IF NOT ONE INCH ON THIS SHEET, ADJUST SCALES ACCORDINGLY.</p>	<p>FEDERAL AVIATION ADMINISTRATION APPROVAL APPROVAL DATE: 9/19/19 [Signature] MANAGER, SEATTLE ADO</p>	<p>CITY OF FLORENCE APPROVAL APPROVAL DATE: 9/11/2019 [Signature] SIGNATURE</p>	<p>CENTURY WEST ENGINEERING CORPORATION 6650 S.W. Redwood Lane, Suite 350 Portland, Oregon 97224 503-419-2130 phone • 503-639-2710 fax www.centurywest.com</p> <table border="1"> <tr> <td>DESIGNED BY: DM</td> <td>DRAWN BY: JLS</td> <td>CHECKED BY: SLK</td> <td>SCALE: AS SHOWN</td> </tr> <tr> <td colspan="2">DATE: MARCH 2010</td> <td colspan="2">PROJECT NO: 4130101001</td> </tr> </table>	DESIGNED BY: DM	DRAWN BY: JLS	CHECKED BY: SLK	SCALE: AS SHOWN	DATE: MARCH 2010		PROJECT NO: 4130101001		<p>FLORENCE MUNICIPAL AIRPORT</p> <p>AIRPORT LAYOUT PLAN</p>	<p>FIGURE NO. .</p> <p>SHEET NO. 3 OF 8</p>
NO.	DATE	BY	APPR	REVISIONS																				
1	6-19	JLS	GJR	AS BUILT AIP #013-2018																				
DESIGNED BY: DM	DRAWN BY: JLS	CHECKED BY: SLK	SCALE: AS SHOWN																					
DATE: MARCH 2010		PROJECT NO: 4130101001																						