

City of Florence Zoning Map

Zoning Districts

Residential

- Restricted
- Single-Family
- Mobile Home/
Manufactured Home
- Multi-Family
- Coast Village

Commercial

- Neighborhood (NA)
- Mainstreet Area A
- Mainstreet Area B
- North Commercial
- Commercial
- Highway

Industrial

- Marine
- Pacific View Business Park
- Limited Industrial
- Service Industrial

Other

- Open Space
- Public Use Airport
- City Limits
- UGB

Mixed Use

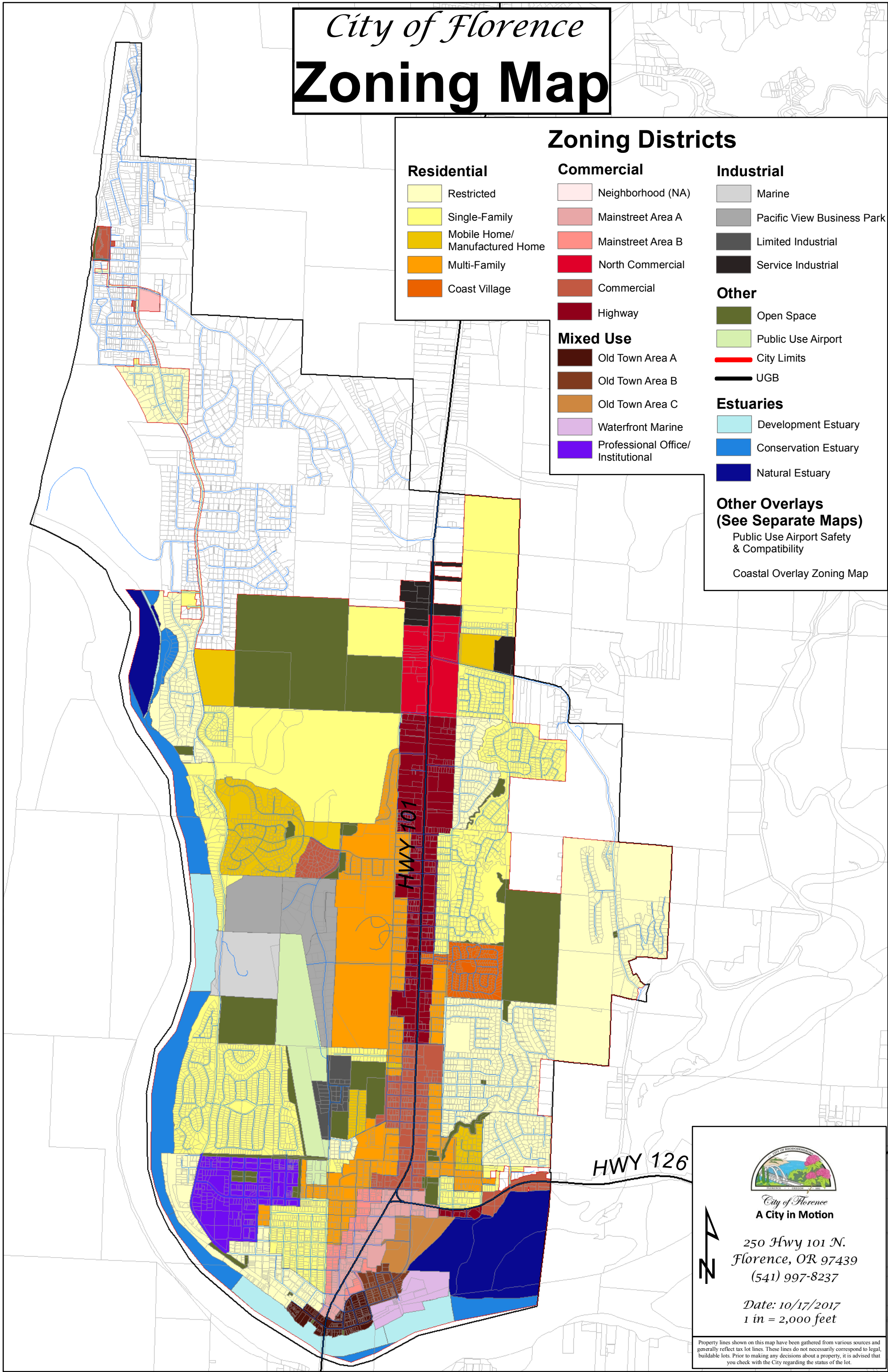
- Old Town Area A
- Old Town Area B
- Old Town Area C
- Waterfront Marine
- Professional Office/
Institutional

Estuaries

- Development Estuary
- Conservation Estuary
- Natural Estuary

Other Overlays (See Separate Maps)

- Public Use Airport Safety
& Compatibility
- Coastal Overlay Zoning Map



City of Florence
A City in Motion

250 Hwy 101 N.
Florence, OR 97439
(541) 997-8237

Date: 10/17/2017
1 in = 2,000 feet

Property lines shown on this map have been gathered from various sources and generally reflect tax lot lines. These lines do not necessarily correspond to legal, buildable lots. Prior to making any decisions about a property, it is advised that you check with the City regarding the status of the lot.